

IDS Summary

The IDS CD is a self-contained map viewing product that contains GIS viewing software and data for all of Knox County. The CD contains all the basic KGIS layers including: planimetric, topographic, property, addresses, roads, zoning, political boundaries, and parcel acreage.

You may visit our website for more information on the IDS or additional products that KGIS has to offer at www.kgis.org.



Minimum Recommended System Configuration:

- * Microsoft Windows 95/98/2000/ME/XP, Windows NT 4.0
- * Intel-compatible 486/66 DX processor or better
- * 16 megabytes of physical RAM. 24 megabytes is recommended if you plan to use digital imagery
- * At least 20 megabytes of free hard disk space, 2.5 gigabytes for digital imagery (optional)
- * 2x (or faster) CD-ROM drive.
- * VGA or higher graphics card supporting a minimum of 256 colors

Note: The data software contained on the IDS CD falls under U.S. copyright rules and regulations. Any duplication or re-sale is therefore prohibited.

*Using IDS (Information Delivery Service) Issue 8, Version 4.0.1 with Knox County Digital Maps you can save valuable time by accessing the same GIS and Property Data used by City and County Agencies. IDS combines the GIS Data of Knox County with an easy-to-use viewing application to provide **digital map data at your fingertips***



The information contained on the CD-Rom product presented in this brochure is derived from public records that are constantly undergoing change. Knox County Government, the City of Knoxville, the Knoxville Utilities Board and its officers, employees, and agents specifically disclaim any warranty for whatever purpose and shall not be liable in any fashion for any actions undertaken or relied upon by users of the data.

I N F O R M A T I O N

Knoxville/Knox County/KUB GIS
606 Main Street, Suite 150
Knoxville, TN 37902

Phone: 865-215-2641
Fax: 865-215-2910
Email: kgis@kgis.org



**New Version!
Updated For
2007!**

**I N F O R M A T I O N
D E L I V E R Y
S E R V I C E**

Knox County Digital Maps

Information
Delivery
Service
(IDS)



**GIS Mapping data and
property information for
over 180,000 properties in
Knoxville and Knox County**

What's new for 2007

Along with an updated database and map features, IDS Version 4.0.1 contains several new enhancements:

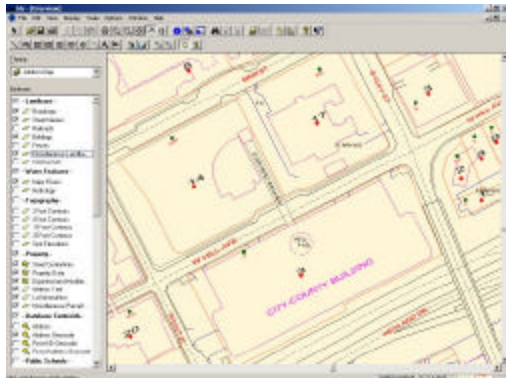
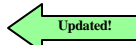
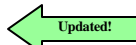
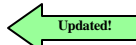
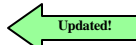
- ◆ Adjustable font size by feature
- ◆ Enhance attribute selection tools
- ◆ Marker placement on selected features
- ◆ Adjustable polygon highlights

Product Overview

The IDS product is a CD-based map viewing package for the entire area of Knox County, Tennessee.

Features available for display are:

- ◆ address & road information
- ◆ urban growth boundary
- ◆ parcel acreage
- ◆ parks & greenways
- ◆ topography
- ◆ zoning information
- ◆ fire and police response zones
- ◆ Building Footprints
- ◆ political & school boundaries
- ◆ Color aerial photography
- ◆ property ownership information



Features & Functions

Here are some of the basic features of the IDS product:

- ◆ Review and Query Property Information
- ◆ Simple Interface
- ◆ Seamless Map Viewing
- ◆ Theme-Based Map Displays
- ◆ Customize your map display
- ◆ Magnify window
- ◆ Add Personal Notes and Markers
- ◆ Calculate Distance and Area
- ◆ View and Print maps at various scale
- ◆ Zoom, pan and fit tools
- ◆ Link to external databases
- ◆ State Plane Coordinate Readouts
- ◆ Retrieve information on features within a polygon you define.

Database Searches—Find your area of interest by searching the database. Display the map and data that you need based on information *you* enter.

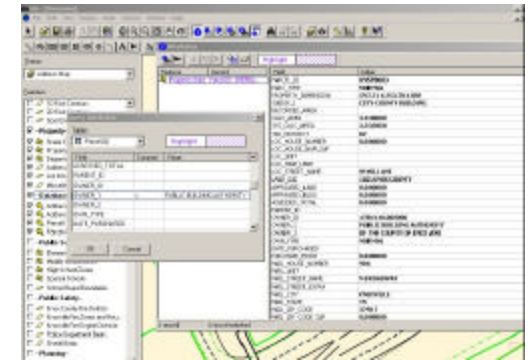
Search for:

- * Addresses by Street Name, House Number, Zip Code, Property ID, etc.
- * Property by ID, subdivision, Owner Name, purchase price, purchased date, address, plat/deed book & page, census tract, etc.
- * Roads by Street Name
- * Schools by Name
- * Zoning by Zone Type
- * GPS point locations by station ID
- * Census Tracts by Population

Advanced Database Searches

In addition to basic database searches the product is capable of answering such questions as:

- * Where are all parcels larger than 30 acres?
- * Where are all the Commercially Zoned parcels between 30 and 100 acres?
- * Where is the property whose appraised land and appraised building value is greater than \$1,000,000?
- * Plus many more!



Digital Orthophotos in color (optional)

Color aerial photos are available with the optional Orthophotography CD. You can view aerial photography as a backdrop to the maps. These photos were acquired as part of the County-wide re-map project used to create the Planimetric and Topographic data!

Pricing Information

- IDS CD.....\$600.00
- Second CD.....\$300.00*
- 2003 Color OrthoPhoto (DVD).....\$350.00**
- 1998-2001 B&W OrthoPhoto CD...\$225.00**
- * Must be purchased at same time as full priced CD.
- ** Only available with purchase of IDS CD