



**6420 Middlebrook Pike
Knoxville, TN
Exterior Master Sign Plan**

October 13, 2020
REV: December 21, 2020

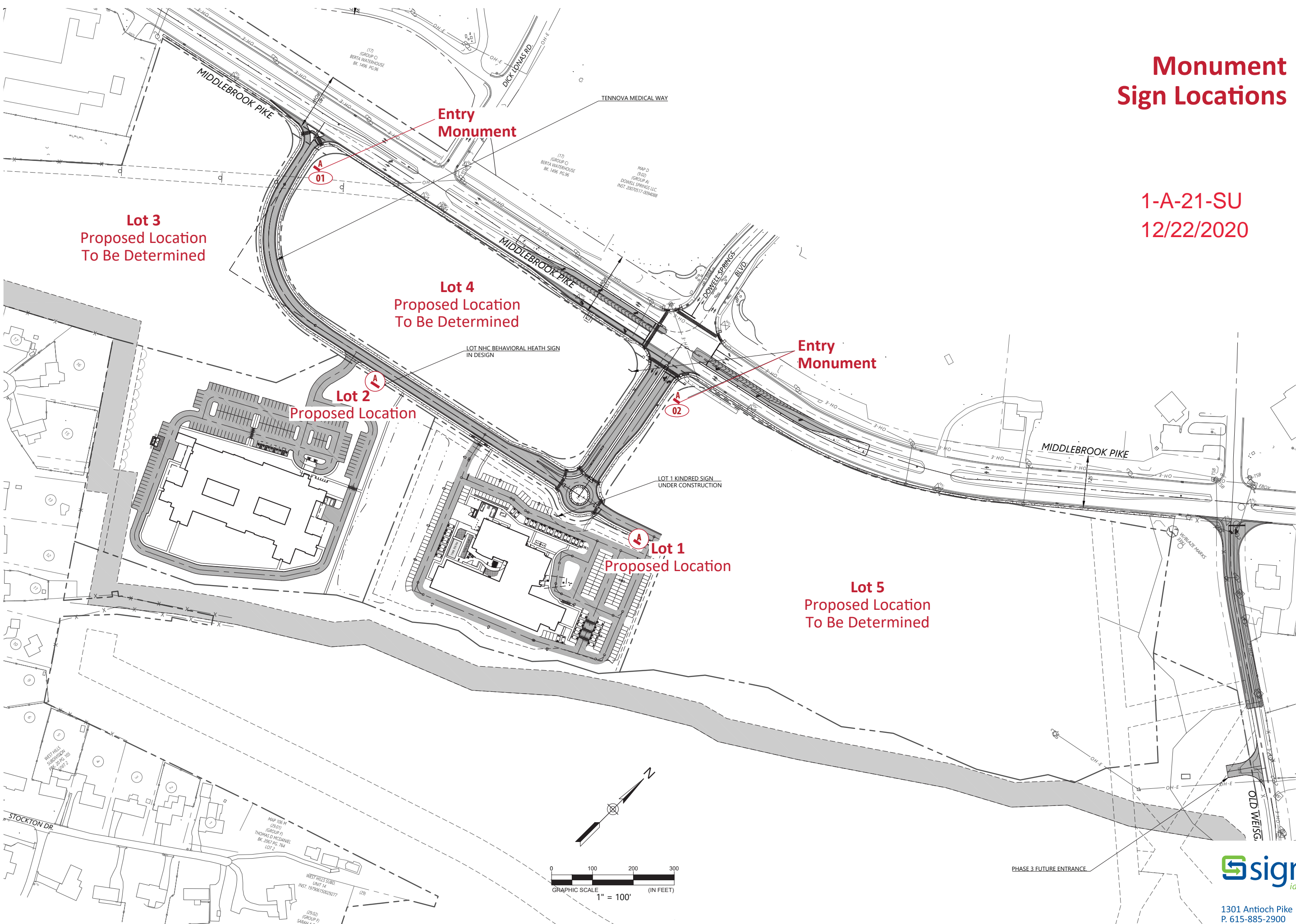
1-A-21-SU
12/22/2020



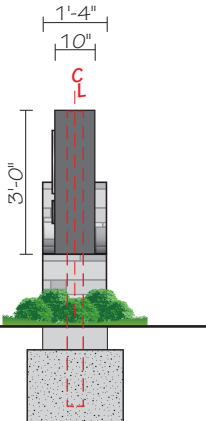
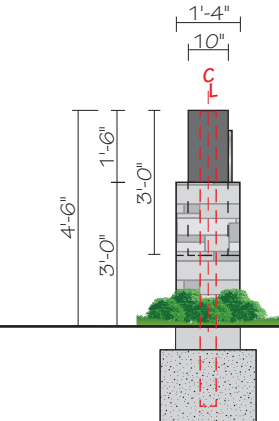
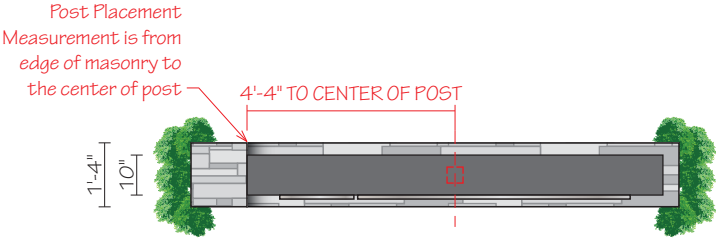
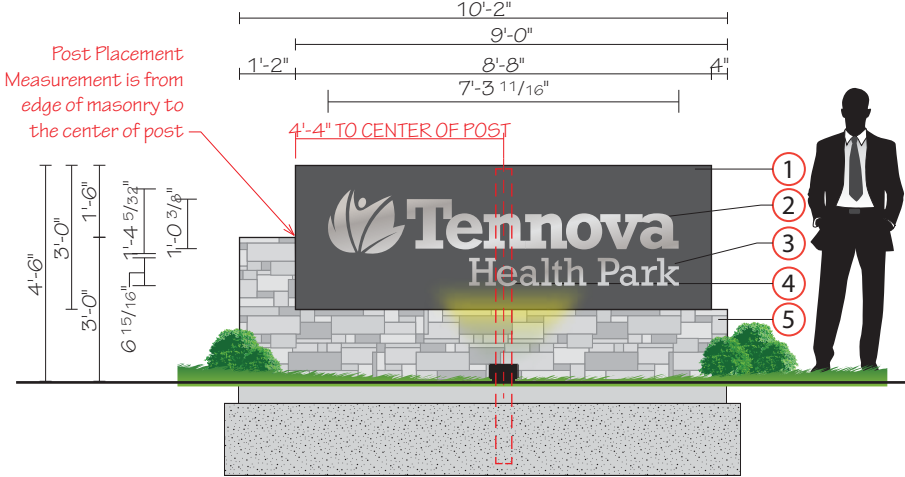
1301 Antioch Pike
Nashville, TN 37211
p. 615-885-2900
f. 615-885-2989

Monument Sign Locations

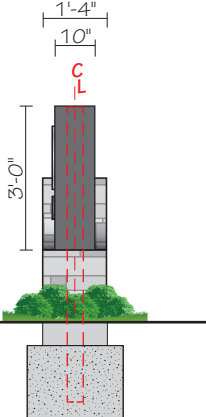
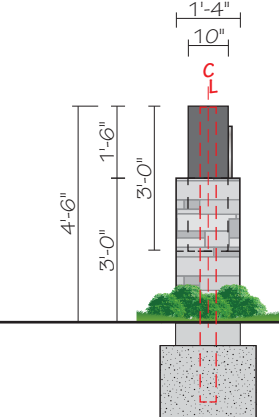
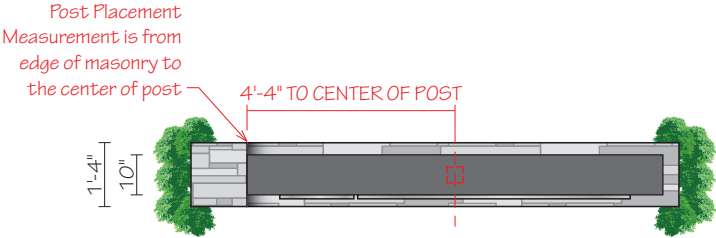
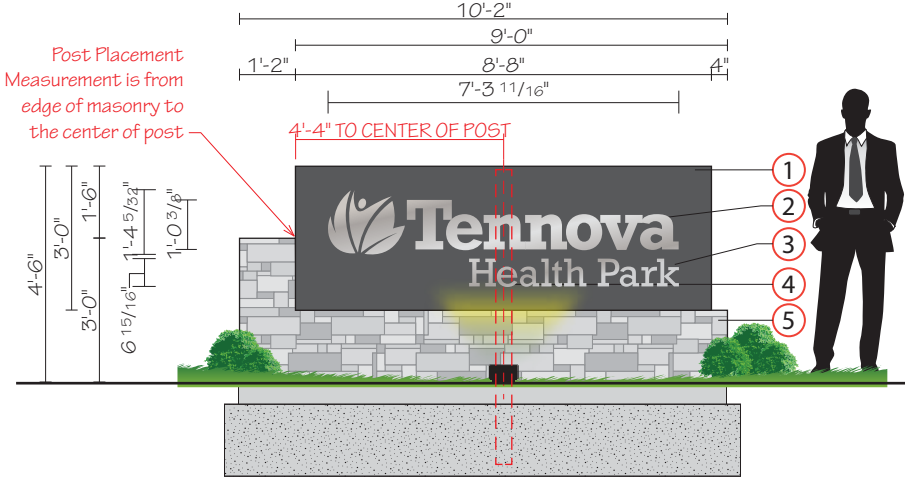
1-A-21-SU
12/22/2020



Location 01
Total: 26 Sq Ft
Per Face



Location 02
Total: 26 Sq Ft
Per Face



Front Side View - Loc 02
Scale: 1/4" = 1'-0"

Left Side View - Loc 02
Scale: 1/4" = 1'-0"

Right Side View - Loc 02
Scale: 1/4" = 1'-0"

1-A-21-SU
12/22/2020

- Notes:**
- Facility to provide logo prior to production.
 - GC responsible for masonry and foundation, and setting 4" Schedule 40 Square Post in Base at time of foundation construction based on engineered drawings.
 - Sign to be externally illuminated by others. Electrical to site by GC.

Location: 01 and 02 - Non Illuminated Entry Monument

- Construction Details:**
- 1 10" deep fabricated aluminum cabinet painted all visible surfaces PMS Cool Gray 9c - Charcoal Gray.
 - 2 1" thick flat cut brushed aluminum logo and letters. Vertical Grain
 - 3 1/2" thick flat cut brushed aluminum letters. Vertical Grain
 - 4 4" Schedule 40 square post
 - 5 Gray slate stone base by others.

Tennova Health Park
Entry Monument Signs

6420 Middlebrook Pike
Knoxville, TN

Date: 10/14/20

Revised: 12/21/20 - KK

Designer: KK

Loc 01 Loc 2
File Name: Monument.ai

File Folder: F:\CUSTOMERS\T\Tennova Medical Park - Knoxville (CHS)\Exterior Sign Package

Project Manager: CR

Location: 01 / 02
Non Illuminated Entry Monument Construction Details

signcraft USA
identifying your way

1301 Antioch Pike, Nashville, TN 37211
p. 615-885-2900 | f. 615-885-2989

This design is being submitted for use as a product being manufactured for you by Signcraft, Inc. It is not to be reproduced, copied or manufactured by you or given to any other manufacturer without written permission from Signcraft, Inc. Unauthorized use is subject to design charge and will include any collection fees.



Front View - SAMPLE

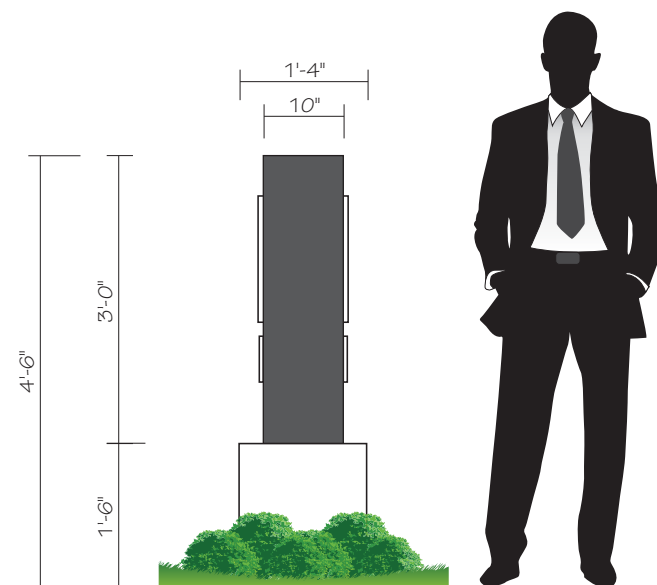
Scale: 1/2" = 1' - 0"

Total = 26 Sq Ft Per Face



Top View - SAMPLE

Scale: 1/2" = 1' - 0"



Side View - SAMPLE

Scale: 1/2" = 1' - 0"

Proposed Standard Design for Lots 1 - 5

Monument Detached Sign Standards:

Masonry Base

- Masonry Base must match materials used on building
- Masonry Base must be at least 18" above grade - no more than 24" above grade
- Masonry Base must be approximately 1'-4" deep x 9'-4" wide
- A Masonry pier is optional
 - Pier is limited to one end of sign only
 - Same material must be used on pier and base
 - Height of pier is limited to 3'-0" above grade
 - Face of pier is limited to 1'-2" wide
- Appropriate landscaping must surround Masonry Base - this includes plants or flowers that will not grow over 18" in height.
- Engineering required for foundation of Masonry Base

Aluminum Sign Cabinet

- Sign Cabinet can be single faced or double faced
- Sign Cabinet size is limited to 3'-0" tall x 8'-8" wide x 10" deep
- Sign Cabinet must be fabricated aluminum and be painted a single solid color
 - Sign Cabinet background must be one of the following colors - black, duranodic bronze, or dark gray (similar or darker than PMS Cool Gray 9C).
- Sign Cabinet Must be Externally illuminated.
 - Cabinets must have 1/2" thick aluminum lettering flush mounted to face of cabinet
 - Logo icons can be in color
 - Lettering must be in satin brushed aluminum (vertical grain) or painted white - including logo icons
 - External illumination achieved by landscaping lighting - as recommended by landscape architect
 - Fixtures must be LED illuminated
 - Fixtures must be finished in black or duranodic bronze
 - No more than (2) fixtures per side of sign
 - Fixtures cannot be visible from public right-of-way
- Sign Cabinet must be attached to Masonry Base per the engineered drawings.

No more than (1) Monument Sign is allowed per property.

Placement/Location of Monument Signs must meet all local codes and regulations

1-A-21-SU
12/22/2020



Monument Sign Standards

6420 Middlebrook Pike
Knoxville, TN

Date: 10/14/20

Revised: 12/21/20

Designer: KK

Lot 1 to 05
File Name: Monument.ai

File Folder: F:\CUSTOMERS\T\Tennova
Medical Park - Knoxville (CHS)\Exterior Sign
Package

Project Manager: CR

Proposed Standard Design for Lots 1- 5



1301 Antioch Pike, Nashville, TN 37211
p. 615-885-2900 | f. 615-885-2989

This design is being submitted for use as a product being manufactured for you by Signcraft, Inc. It is not to be reproduced, copied or manufactured by you or given to any other manufacturer without written permission from Signcraft, Inc. Unauthorized use is subject to design charge and will include any collection fees.



KNOXVILLE REHABILITATION HOSPITAL

Front View - SAMPLE

Scale: 3/8" = 1' - 0"

**Total = Not To Exceed 5% of
Primary Building Elevation**

Proposed Standard Design for Lots 1 - 5

Building Attached Sign Standards:

- Building Signs must be individual letters
 - Letters must be a minimum of 1" Thick
 - Letters and Logo icons have no color restrictions
 - Letters must be flush mounted to the building
- Building Signs may not exceed 5% of the wall area of the primary building elevation
- Letters and Logo must be externally illuminated
 - External light sources must not be visible from the public right-of-way or adjacent properties.
 - Per OP Zone Ordinance - internal illumination is ONLY allowed if Healthcare facility has an emergency room.
 - Signs may have internal illumination only if the building has an emergency room.
- Building Signs must be attached to building per engineered drawings.



Building Sign Standards

6420 Middlebrook Pike
Knoxville, TN

Date: 10/14/20

Revised: 12/21/20

Designer: KK

Building Sign
File Name: Standards.ai

File Folder: F:\CUSTOMERS\T\Tennova
Medical Park - Knoxville (CHS)\Exterior Sign
Package

Project Manager: CR

Proposed Standard Design for Lots 1-5



1301 Antioch Pike, Nashville, TN 37211
p. 615-885-2900 | f. 615-885-2989

This design is being submitted for use as a product being manufactured for you by Signcraft, Inc. It is not to be reproduced, copied or manufactured by you or given to any other manufacturer without written permission from Signcraft, Inc. Unauthorized use is subject to design charge and will include any collection fees.



East Elevation - SAMPLE

Scale: 1/16" = 1' - 0"

1-A-21-SU
12/22/2020