

Planning Comments 1:



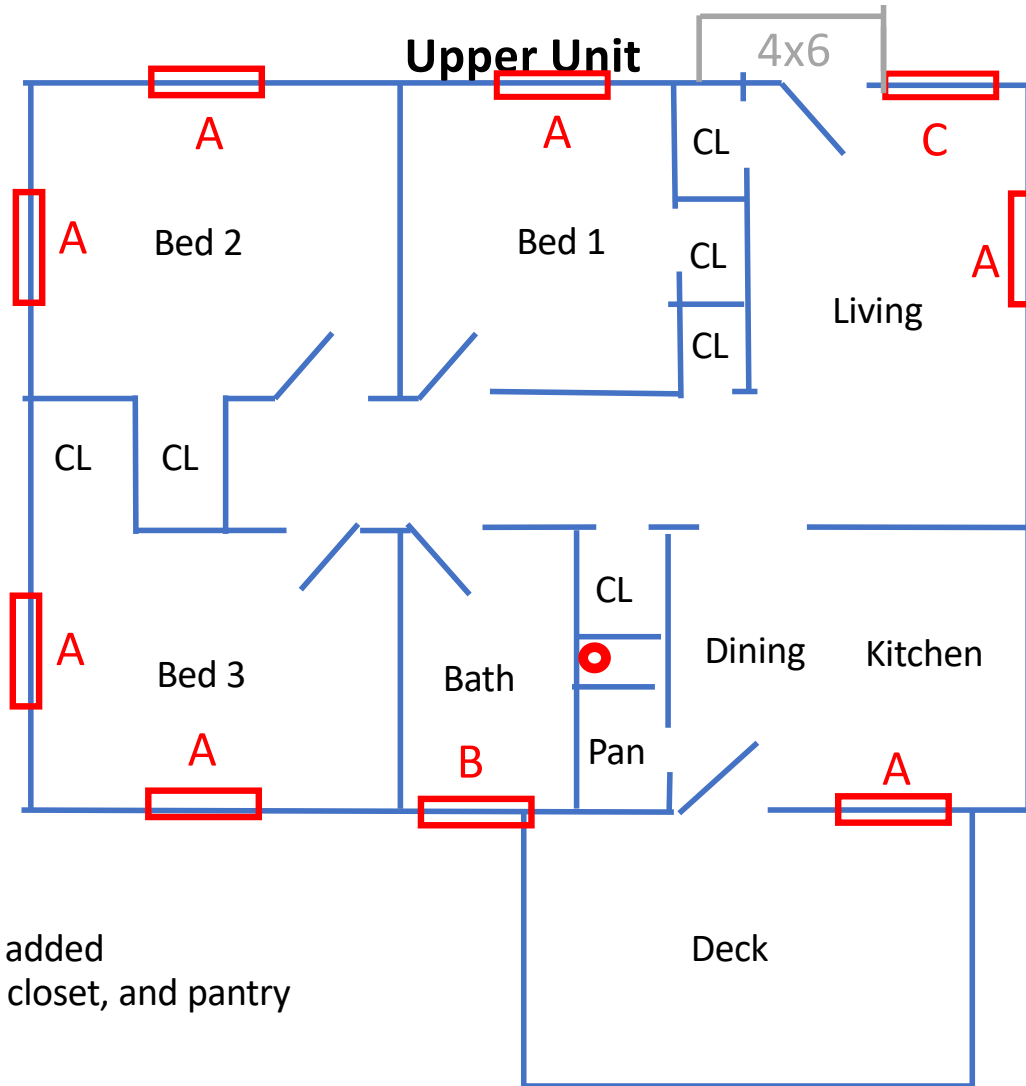
Planning Comments 1a:



General Engineering Comments 2:



1-B-21-SU
11/24/2020



- A – 36" x 36" window
- B – 17" x 36" window
- C – 48" x 60" window
- D – 36" x 28" window
- – 3" fire collar

LVP flooring to be added
in kitchen, dining, closet, and pantry
area

