

- NOTES:
1. IRON PINS FOUND (IPF) SHOWN ON PLAT. ALL OTHERS SET BY BHN&P, UNLESS NOTED OTHERWISE ON PLAT.
 2. 10' UTILITY, DRAINAGE AND CONSTRUCTION EASEMENTS INSIDE ALL EXTERIOR LOT LINES AND ALONG ALL ROADS, 5' UTILITY, DRAINAGE AND CONSTRUCTION EASEMENTS ALONG BOTH SIDES OF ALL INTERIOR LOT LINES, PLUS OTHER EASEMENTS AS SHOWN.
 3. SANITARY SEWER EASEMENT OF 15', 7.5' EACH SIDE OF SEWER AS INSTALLED (WHERE APPLICABLE).
 4. THIS PROPERTY IS ZONED PR-1 AND CONTAINS 10,936 SF.
 5. GRID NORTH IS BASED ON A BEARING OF N 23°47'41" E FROM CITY OF KNOXVILLE MONUMENT 0878 TO 0879. DISTANCES ARE NOT REDUCED TO GRID.
 6. CONTOURS PROVIDED BY KNOXVILLE/KNOX COUNTY G.I.S.

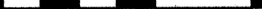

USE ON REVIEW REQUEST
REVISE PREVIOUS BUILDING SETBACKS AS FOLLOWS:
FRONT SETBACK FROM 25' TO 15'

USE ON REVIEW
FOR
STRATFORD PARK
UNIT 2
LOT 143

TAX MAP 57ND, PARCEL 62
DISTRICT 6, KNOX COUNTY, TN.
CITY BLOCK 38216, WARD 38, CITY OF KNOXVILLE, TN.

SCALE: 1" = 30' NOVEMBER 20, 2019

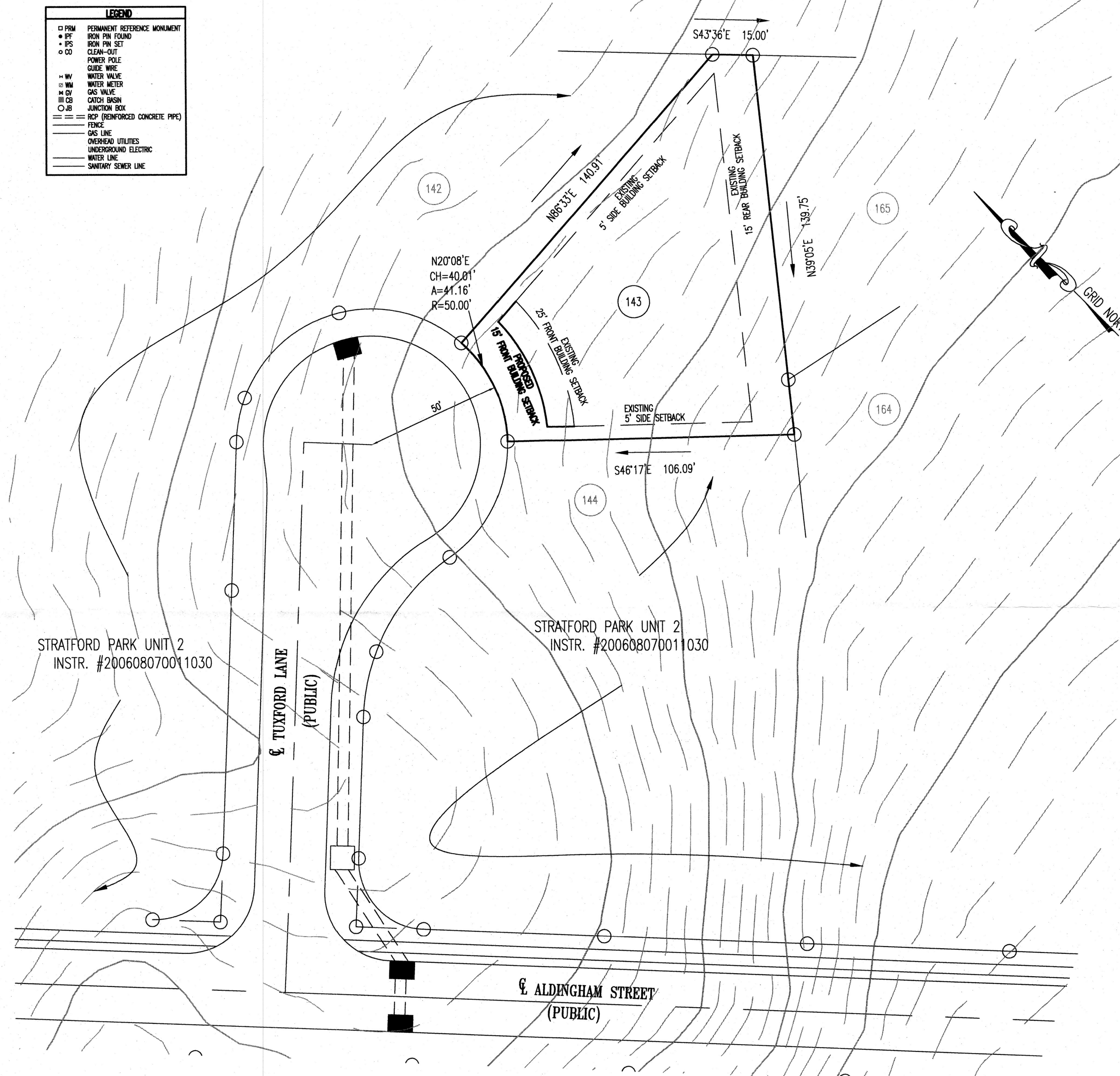
0 30' 60' 120'

A horizontal graphic scale bar with alternating black and white segments. It is marked with '0', '30'', '60'', and '120'' at regular intervals.

BATSON, HIMES, NORVELL & POE
REGISTERED ENGINEERS & LAND SURVEYORS
 4334 PAPERMILL DRIVE
 KNOXVILLE, TENNESSEE 37909
 PHONE (865) 588-6472
 FAX (865) 588-6473
 email@bhn-p.com

23978-2-LOT-143

Q:\23978\23978-2-FP.DWG



OWNERS:

JENKINS BUILDERS INC
1400 BRANCH FIELD LN
KNOXVILLE, TN 37918
PHONE: (865) 388-2753

PLAT REFERENCE: INSTR.#200608070011030
DEED REFERENCE: INSTR.#201711140030380

1-F-20-VR
11/25/19

11/25/19