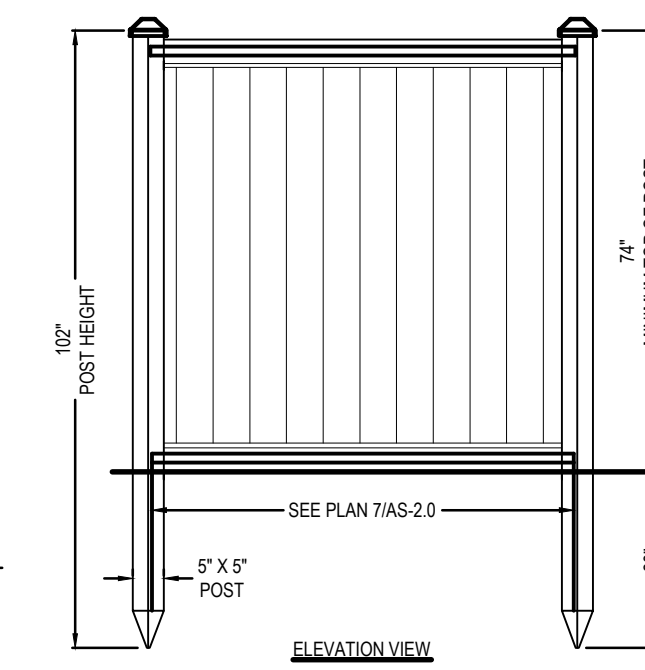
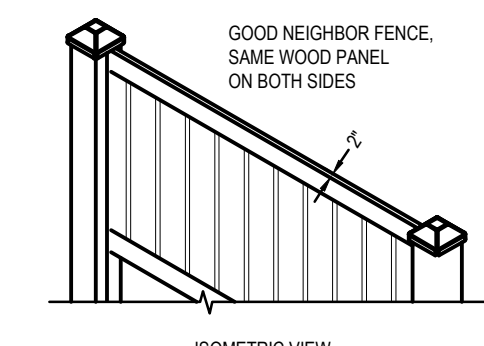


- NOTES:**
- 1.) Post size depends on fence height and wind loads. See MONTAGE™ specifications for post sizing chart.
 - 2.) Third rail required for Double Rings.
 - 3.) Available in 5" air space and/or Flush Bottom on most heights.
 - 4.) Three rails required for 6' tall.

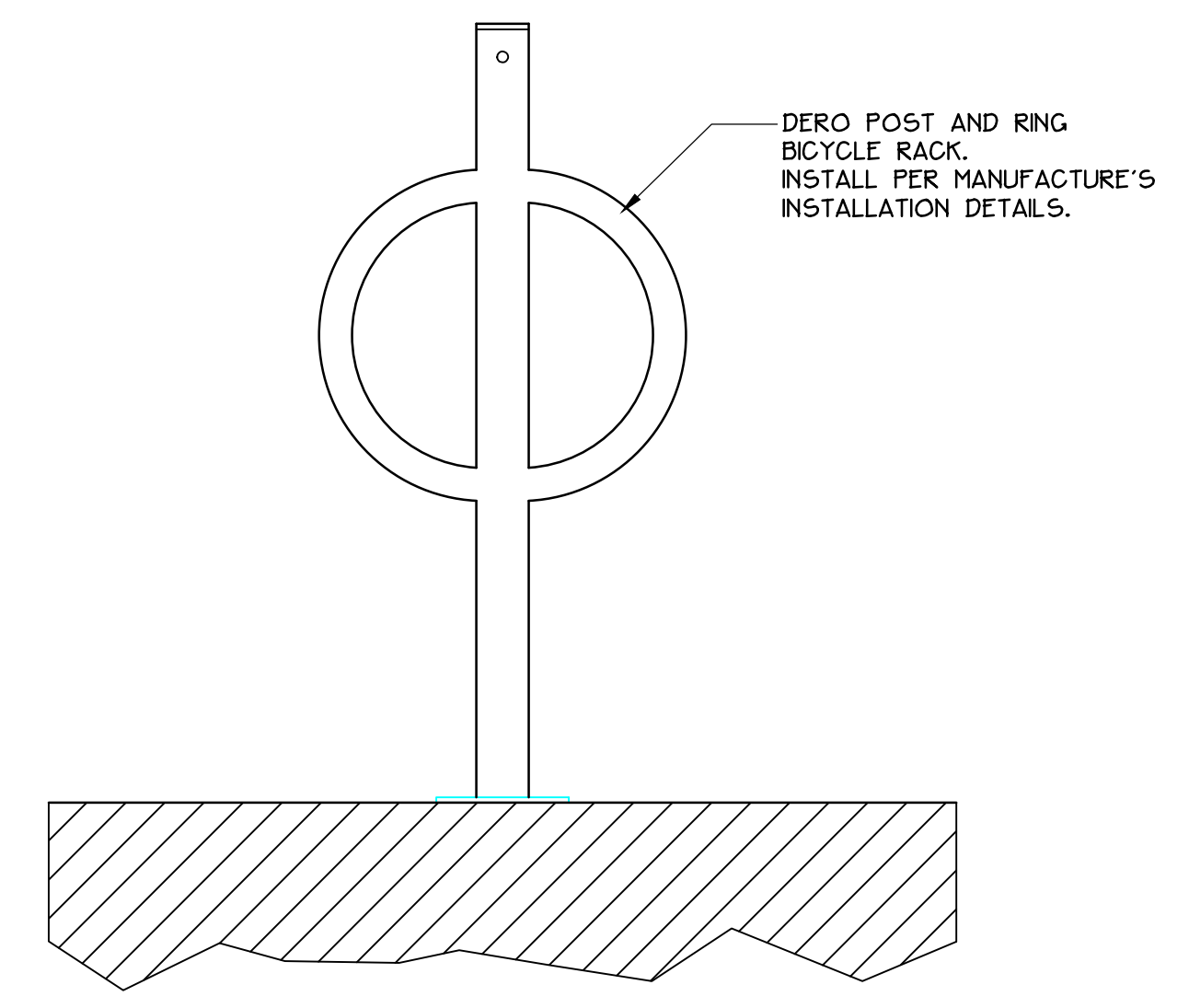
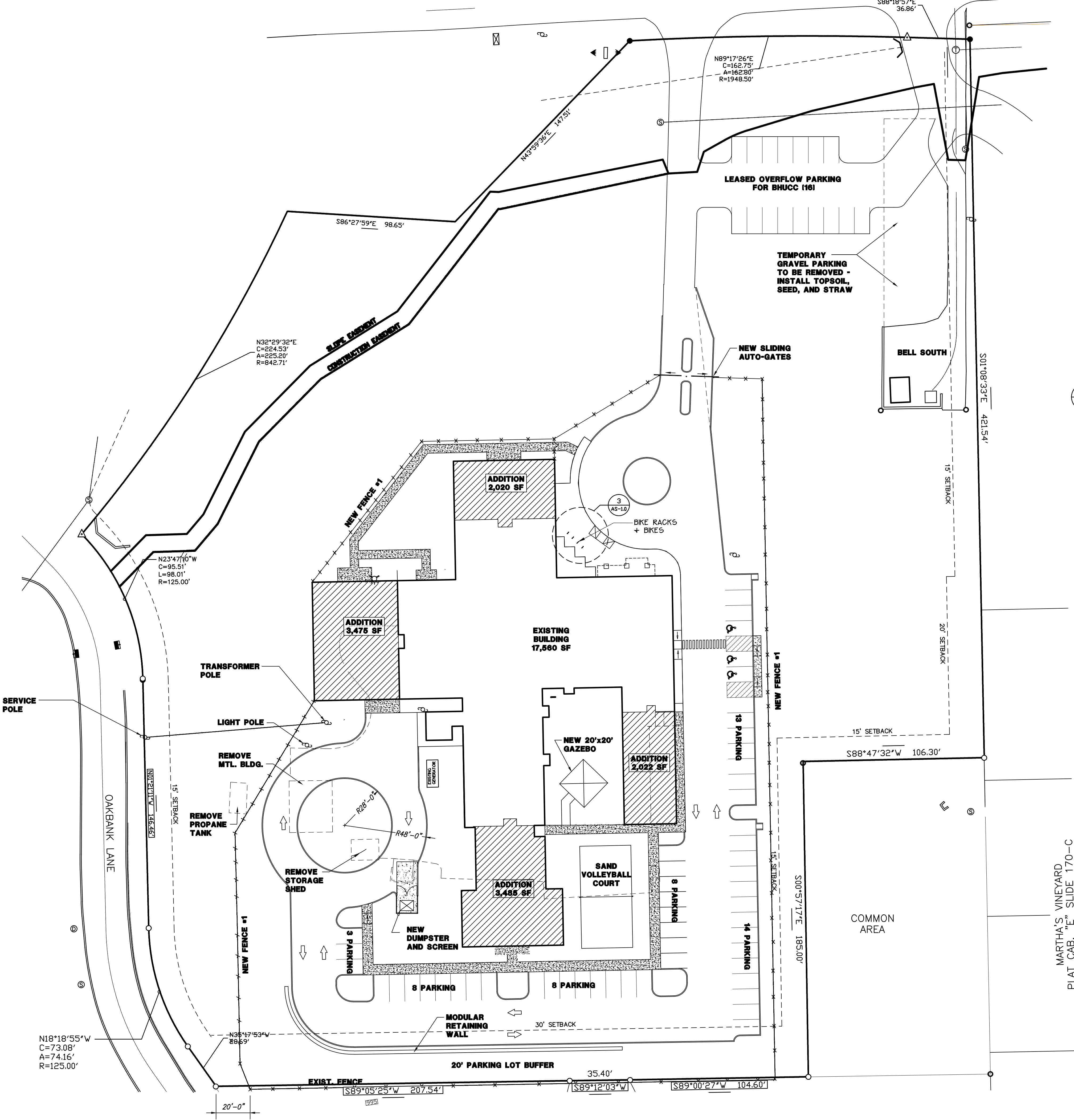
1 NEW FENCE #1
SCALE: 3/8"=1'-0"



SPECIFICATIONS:
STYLE: CERTAINTED SHERWOOD LLOPPE FENCE AND POSTS
FINISH: MADE WITH LINEAR LOW DENSITY POLYETHYLENE PLASTIC LLOPPE
ACTUAL PANEL DIMENSIONS: 72" X 66.75" W
PANEL WEIGHT: 55 LBS
TOLERANCES: ± 5"

MANUFACTURER NOTES:
1. US PATENTS 7,478,797 / 7,635,114 FOREIGN PATENTS PENDING.
2. DO NOT SCALE DRAWING.
3. THIS DRAWING IS INTENDED FOR USE BY ARCHITECTS, ENGINEERS, CONTRACTORS, CONSULTANTS AND DESIGN PROFESSIONALS FOR PLANNING PURPOSES ONLY. THIS DRAWING MAY NOT BE USED FOR CONSTRUCTION.
4. ALL INFORMATION CONTAINED HEREIN WAS CURRENT AT THE TIME OF DEVELOPMENT BUT MUST BE REVIEWED AND APPROVED BY THE PRODUCT MANUFACTURER TO BE CONSIDERED ACCURATE.
5. COLOR TO BE SELECTED BY ARCHITECT FROM MANUFACTURER'S LIST OF STANDARD COLORS.

2 DUMPSTER FENCE DETAIL
SCALE: 3/8"=1'-0"

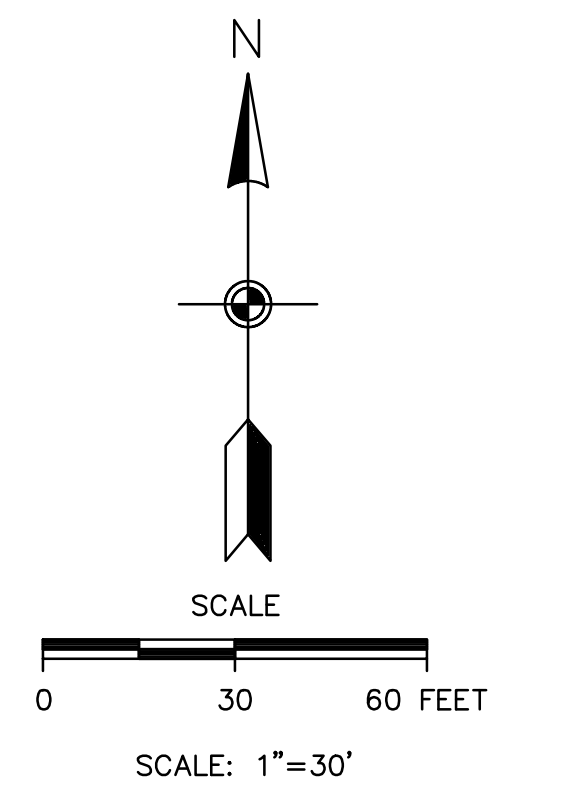


3 BICYCLE RACK
SCALE: 1/2"=1'-0"

BUILDING	
MAIN BLDG. EXIST	17,560
ADDITIONS	11,163+/-
TOTAL	28,713+/-

PARKING REQUIRED
D/A TREATMENT RESIDENTIAL
MIN. 1 PER ROOM 28x1+28
MAX. 2.5 PER ROOM 28x2.5+70

PARKING PROVIDED	
EXISTING TYPICAL	62
EXISTING ACCESSIBLE	3
SPACES DEMO'D	-25
SPACES ADDED	24
TOTAL	64
BHUC SPACES	18
TOTAL	70



SITE SCOPE PLAN
SCALE: 1"=30'-0"

10-A-23-SU
11/18/2023

CAD FILE: HRMCP AS-10DWG

DRWN BY: SHR/MSA
CHKD. BY: MDA
APPR. BY: MDA
DATE: 9-18-23
REVISIONS

SITE LAYOUT PLAN

HELEN ROSS McNABB CENTERPOINTE

5310 BALL CAMP PIKE

ALLAN ASSOCIATES ARCHITECTS, PLLC

5516 WALLWOOD ROAD
865 / 688-1302
KNOXVILLE, TENNESSEE 37912

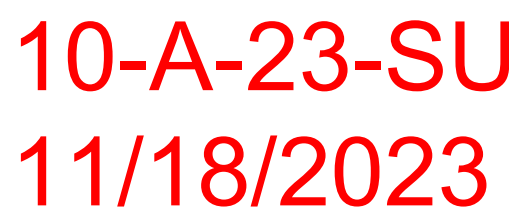
CERTAINTED CORPORATION FENCE
DECK AND RAIL DIVISION
231 SHIP CANAL PARKWAY
BUFFALO, NY 14215
TOLL FREE: 1-800-333-0569
PHONE: (716) 823-3023
FAX: (716) 823-2843
www.certaainted.com

PRELIMINARY
NOT FOR
CONSTRUCTION
9/18/2023

SHEET NUMBER

AS-1.0

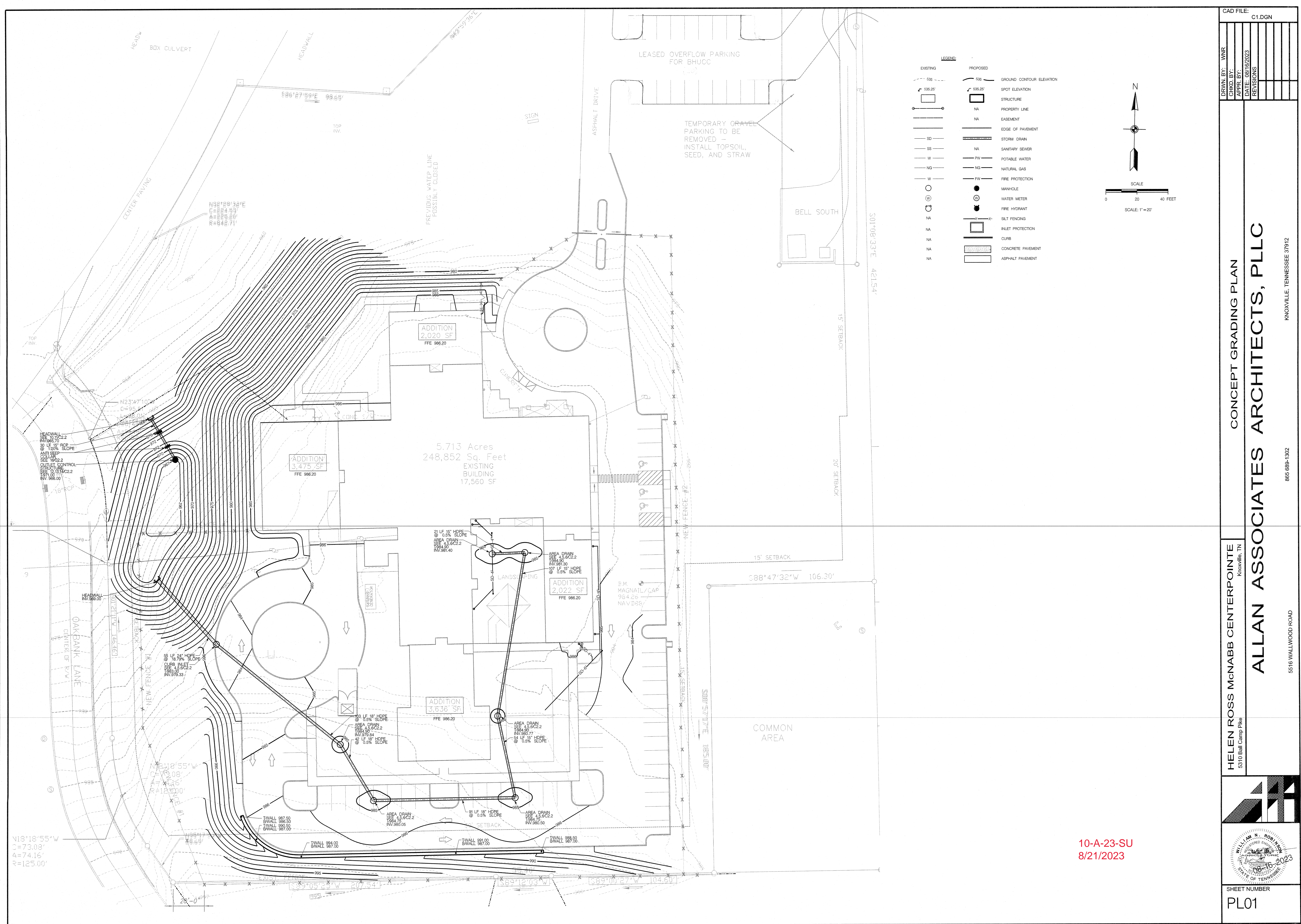
10-A-23-SU
11/18/2023



**PRELIMINARY
NOT FOR
CONSTRUCTION
9/18/2023**

SHEET NUMBER

A-1.0



CAD FILE: C1.DGN	
DRWN BY: WNR	
CHKD BY:	
APPR BY:	
DATE: 08/16/2023	
REVISIONS	

CONCEPT GRADING PLAN

ALLAN ASSOCIATES ARCHITECTS, PLLC

KNOXVILLE, TENNESSEE 37912

HELEN ROSS McNABB CENTERPOINTE
Knoxville, TN
5310 Ball Camp Pike

865 689-1302

SHEET NUMBER
PL01

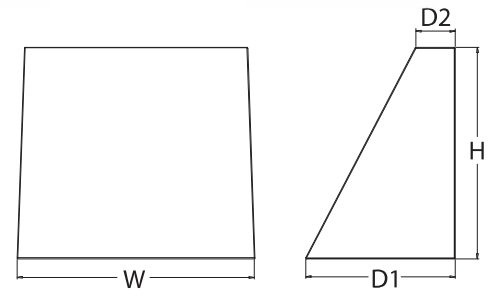
10-A-23-SU
8/21/2023



WDGE1 LED Architectural Wall Sconce



Specifications
Depth (D1): 5.5"
Depth (D2): 1.5"
Height: 8"
Width: 9"
Weight: 9 lbs (without options)



Introduction
The WDGE LED family is designed to meet specifier's every wall-mounted lighting need in a widely accepted shape that blends with any architecture. The clean, rectangular design comes in four sizes with lumen packages ranging from 1,200 to 25,000 lumens, providing true site-wide solution.
WDGE1 delivers up to 2,000 lumens with a soft, non-glared light source, creating a visually comfortable environment. The compact size of WDGE1, with its integrated emergency battery backup option, makes it an ideal over-the-door wall-mounted lighting solution.

WDGE LED Family Overview									
Luminaire	Standard DALI, 0°C	ColorTemp, 20°C	Sensor	P1	P2	P3	P4	P5	P6
WDGE1 LED	4W	—	—	1,200	2,000	—	—	—	—
WDGE2 LED	10W	18W	Standard / Night	1,200	2,000	3,000	4,500	6,000	—
WDGE3 LED	15W	18W	Standard / Night	7,500	8,500	10,000	12,000	—	—
WDGE4 LED	—	—	Standard / Night	12,000	16,000	20,000	22,000	25,000	—

Ordering Information									
Series	Package	Color Temperature	CR	Distribution	Voltage	Mounting	Shipped In		
WDGE1 LED	P1	27K	2700K	80CRI	VF	Visual comfort broad throw	WVOLT	—	—
WDGE2 LED	P2	27K	2700K	80CRI	VF	Visual comfort broad throw	WVOLT	—	—
WDGE3 LED	P3	27K	2700K	80CRI	VF	Visual comfort broad throw	WVOLT	—	—
WDGE4 LED	P4	27K	2700K	80CRI	VF	Visual comfort broad throw	WVOLT	—	—

Options									
EM	Emergency battery backup, Certified in CA Title 20 MARS	EM	Emergency battery backup, Certified in CA Title 20 MARS	EM	Emergency battery backup, Certified in CA Title 20 MARS	EM	Emergency battery backup, Certified in CA Title 20 MARS	EM	Emergency battery backup, Certified in CA Title 20 MARS
PE	PhotoCell, dusk-to-dawn	PE	PhotoCell, dusk-to-dawn	PE	PhotoCell, dusk-to-dawn	PE	PhotoCell, dusk-to-dawn	PE	PhotoCell, dusk-to-dawn
DS	Dual switching (comes with 2 drivers and 2 light engines, see page 3 for details)	DS	Dual switching (comes with 2 drivers and 2 light engines, see page 3 for details)	DS	Dual switching (comes with 2 drivers and 2 light engines, see page 3 for details)	DS	Dual switching (comes with 2 drivers and 2 light engines, see page 3 for details)	DS	Dual switching (comes with 2 drivers and 2 light engines, see page 3 for details)
DMG	6-10 ft. dimming range (add external sensor for use with an external control, selected separately)	DMG	6-10 ft. dimming range (add external sensor for use with an external control, selected separately)	DMG	6-10 ft. dimming range (add external sensor for use with an external control, selected separately)	DMG	6-10 ft. dimming range (add external sensor for use with an external control, selected separately)	DMG	6-10 ft. dimming range (add external sensor for use with an external control, selected separately)
BCE	Bottom conduit entry for back box (PBB), Total of 4 entry points	BCE	Bottom conduit entry for back box (PBB), Total of 4 entry points	BCE	Bottom conduit entry for back box (PBB), Total of 4 entry points	BCE	Bottom conduit entry for back box (PBB), Total of 4 entry points	BCE	Bottom conduit entry for back box (PBB), Total of 4 entry points
BAA	Buy America's Act Compliant	BAA	Buy America's Act Compliant	BAA	Buy America's Act Compliant	BAA	Buy America's Act Compliant	BAA	Buy America's Act Compliant

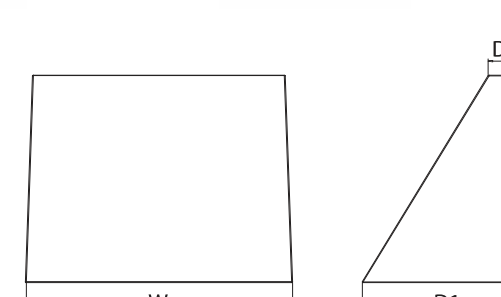
One Lithonia Way • Cumers, Georgia 30012 • Phone: 1-800-705-SERV (7378) • www.lithonia.com
© 2019-2022 Acuity Brands Lighting, Inc. All rights reserved.



WDGE2 LED Architectural Wall Sconce Precision Refractive Optic



Specifications
Depth (D1): 7"
Depth (D2): 1.5"
Height: 9"
Width: 11.5"
Weight: 13.5 lbs (without options)



Introduction
The WDGE LED family is designed to meet specifier's every wall-mounted lighting need in a widely accepted shape that blends with any architecture. The clean, rectangular design comes in four sizes with lumen packages ranging from 1,200 to 25,000 lumens, providing a true site-wide solution. Embedded with "right" A&S wireless controls, the WDGE family provides additional energy savings and code compliance.
WDGE2 with industry leading precision refractive optic provides great uniform distribution and optical control. When combined with multiple integrated emergency battery backup options, including an 18W cold temperature option, the WDGE2 becomes the ideal wall-mounted lighting solution for pedestrian scale applications in any environment.

WDGE LED Family Overview									
Luminaire	Agency	Standard DALI, 0°C	ColorTemp, 20°C	Sensor	P1	P2	P3	P4	P5
WDGE1 LED	Visual Comfort	4W	—	—	1,200	2,000	—	—	—
WDGE2 LED	Visual Comfort	10W	18W	Standard / Night	1,200	2,000	3,000	4,500	6,000
WDGE3 LED	Precision Refractive	10W	18W	Standard / Night	7,500	8,500	10,000	12,000	—
WDGE4 LED	Precision Refractive	15W	18W	Standard / Night	12,000	16,000	20,000	22,000	25,000

Ordering Information									
Series	Package	Color Temperature	CR	Distribution	Voltage	Mounting	Shipped In		
WDGE2 LED	P2	27K	2700K	80CRI	VF	Visual comfort broad throw	WVOLT	—	—
WDGE3 LED	P3	27K	2700K	80CRI	VF	Visual comfort broad throw	WVOLT	—	—
WDGE4 LED	P4	27K	2700K	80CRI	VF	Visual comfort broad throw	WVOLT	—	—

Options									
EM	Emergency battery backup, Certified in CA Title 20 MARS	EM	Emergency battery backup, Certified in CA Title 20 MARS	EM	Emergency battery backup, Certified in CA Title 20 MARS	EM	Emergency battery backup, Certified in CA Title 20 MARS	EM	Emergency battery backup, Certified in CA Title 20 MARS
PE	PhotoCell, dusk-to-dawn	PE	PhotoCell, dusk-to-dawn	PE	PhotoCell, dusk-to-dawn	PE	PhotoCell, dusk-to-dawn	PE	PhotoCell, dusk-to-dawn
DS	Dual switching (comes with 2 drivers and 2 light engines, see page 3 for details)	DS	Dual switching (comes with 2 drivers and 2 light engines, see page 3 for details)	DS	Dual switching (comes with 2 drivers and 2 light engines, see page 3 for details)	DS	Dual switching (comes with 2 drivers and 2 light engines, see page 3 for details)	DS	Dual switching (comes with 2 drivers and 2 light engines, see page 3 for details)
DMG	6-10 ft. dimming range (add external sensor for use with an external control, selected separately)	DMG	6-10 ft. dimming range (add external sensor for use with an external control, selected separately)	DMG	6-10 ft. dimming range (add external sensor for use with an external control, selected separately)	DMG	6-10 ft. dimming range (add external sensor for use with an external control, selected separately)	DMG	6-10 ft. dimming range (add external sensor for use with an external control, selected separately)
BCE	Bottom conduit entry for back box (PBB), Total of 4 entry points	BCE	Bottom conduit entry for back box (PBB), Total of 4 entry points	BCE	Bottom conduit entry for back box (PBB), Total of 4 entry points	BCE	Bottom conduit entry for back box (PBB), Total of 4 entry points	BCE	Bottom conduit entry for back box (PBB), Total of 4 entry points
BAA	Buy America's Act Compliant	BAA	Buy America's Act Compliant	BAA	Buy America's Act Compliant	BAA	Buy America's Act Compliant	BAA	Buy America's Act Compliant

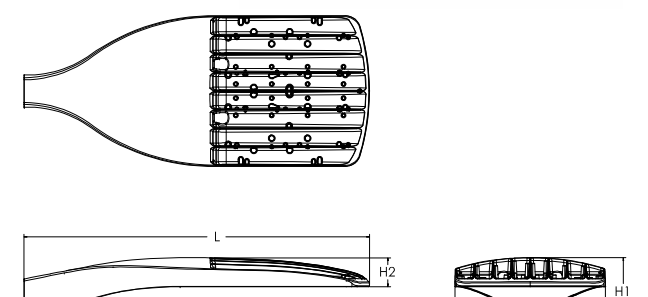
One Lithonia Way • Cumers, Georgia 30012 • Phone: 1-800-705-SERV (7378) • www.lithonia.com
© 2019-2022 Acuity Brands Lighting, Inc. All rights reserved.



D-Series Size 1 LED Area Luminaire



Specifications
EPA: 0.60 ft.
Length: 32.71"
Width: 14.26"
Height H1: 7.88"
Height H2: 2.73"
Weight: 34 lbs (15 kg)



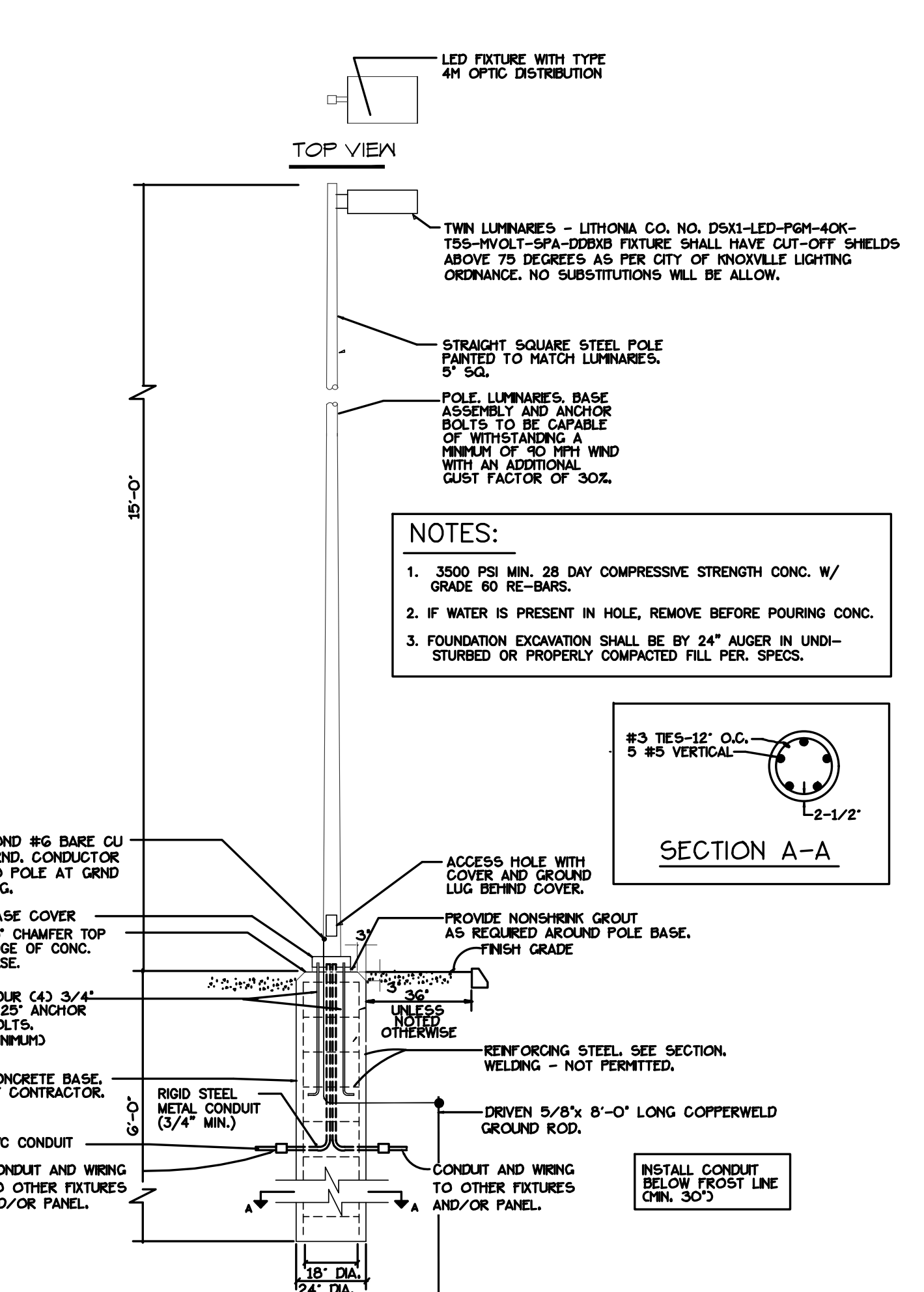
Introduction
The modern styling of the D-Series features a highly refined aesthetic that blends seamlessly with its environment. The D-Series offers the benefits of the latest in LED technology into a high performance, high efficacy, long-life luminaire.
The photometric performance results in sites with excellent uniformity, greater pole spacing and lower power density. D-Series outstanding photometry aids in reducing the number of poles required in area lighting applications with typical energy savings of 65% and expected service life of over 100,000 hours.

Ordering Information									
Series	LEDs	Color Temperature	Color Rendering Index	Distribution	Mounting	Shipped In			
DS1 LED	P1	27K	2700K	80CRI	VF	Visual comfort broad throw	WVOLT	—	—
DS2 LED	P2	27K	2700K	80CRI	VF	Visual comfort broad throw	WVOLT	—	—
DS3 LED	P3	27K	2700K	80CRI	VF	Visual comfort broad throw	WVOLT	—	—

Options									
EM	Emergency battery backup, Certified in CA Title 20 MARS	EM	Emergency battery backup, Certified in CA Title 20 MARS	EM	Emergency battery backup, Certified in CA Title 20 MARS	EM	Emergency battery backup, Certified in CA Title 20 MARS	EM	Emergency battery backup, Certified in CA Title 20 MARS
PE	PhotoCell, dusk-to-dawn	PE	PhotoCell, dusk-to-dawn	PE	PhotoCell, dusk-to-dawn	PE	PhotoCell, dusk-to-dawn	PE	PhotoCell, dusk-to-dawn
DS	Dual switching (comes with 2 drivers and 2 light engines, see page 3 for details)	DS	Dual switching (comes with 2 drivers and 2 light engines, see page 3 for details)	DS	Dual switching (comes with 2 drivers and 2 light engines, see page 3 for details)	DS	Dual switching (comes with 2 drivers and 2 light engines, see page 3 for details)	DS	Dual switching (comes with 2 drivers and 2 light engines, see page 3 for details)
DMG	6-10 ft. dimming range (add external sensor for use with an external control, selected separately)	DMG	6-10 ft. dimming range (add external sensor for use with an external control, selected separately)	DMG	6-10 ft. dimming range (add external sensor for use with an external control, selected separately)	DMG	6-10 ft. dimming range (add external sensor for use with an external control, selected separately)	DMG	6-10 ft. dimming range (add external sensor for use with an external control, selected separately)
BCE	Bottom conduit entry for back box (PBB), Total of 4 entry points	BCE	Bottom conduit entry for back box (PBB), Total of 4 entry points	BCE	Bottom conduit entry for back box (PBB), Total of 4 entry points	BCE	Bottom conduit entry for back box (PBB), Total of 4 entry points	BCE	Bottom conduit entry for back box (PBB), Total of 4 entry points
BAA	Buy America's Act Compliant	BAA	Buy America's Act Compliant	BAA	Buy America's Act Compliant	BAA	Buy America's Act Compliant	BAA	Buy America's Act Compliant

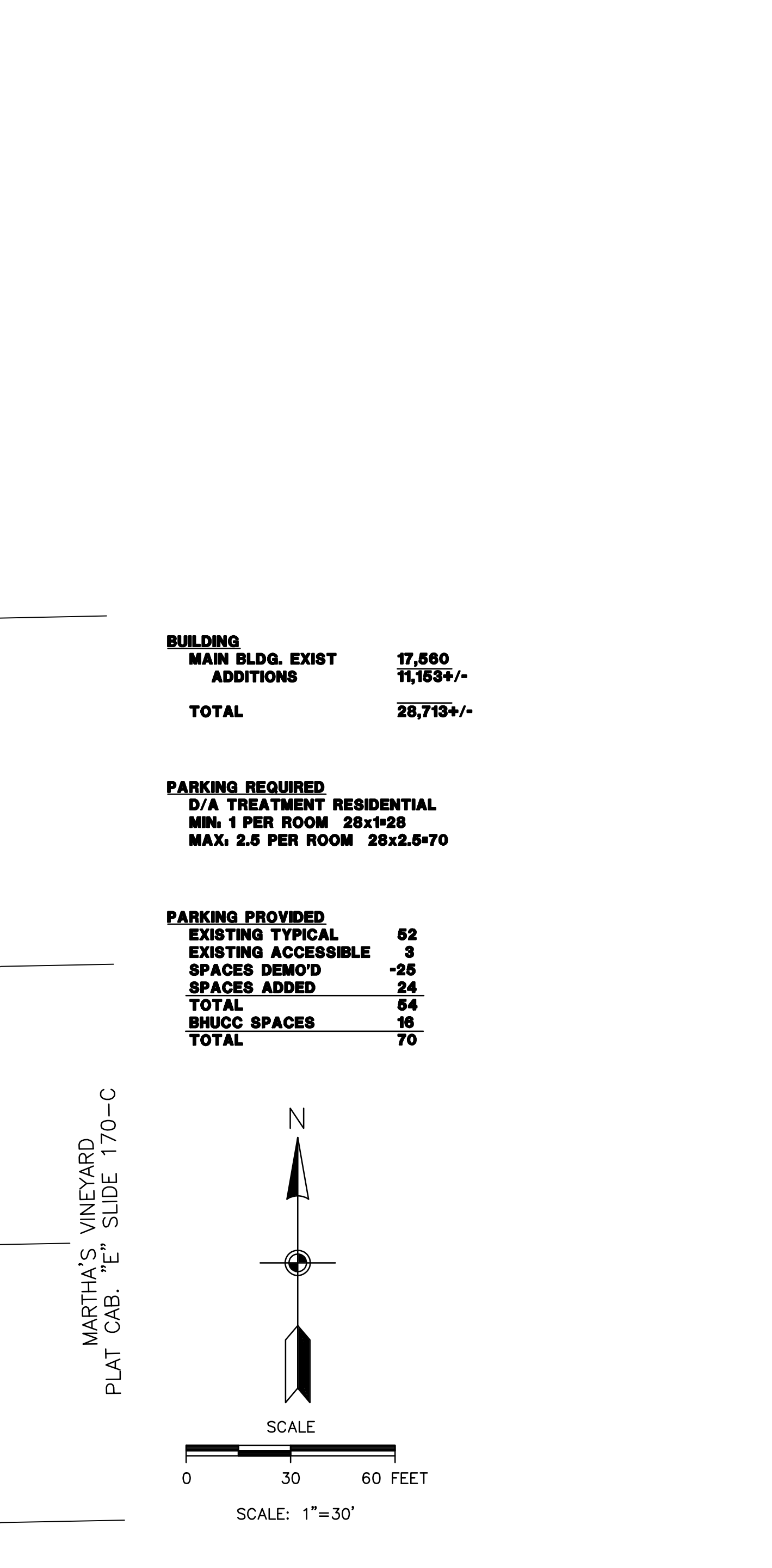
Options									
EM	Emergency battery backup, Certified in CA Title 20 MARS	EM	Emergency battery backup, Certified in CA Title 20 MARS	EM	Emergency battery backup, Certified in CA Title 20 MARS	EM	Emergency battery backup, Certified in CA Title 20 MARS	EM	Emergency battery backup, Certified in CA Title 20 MARS
PE	PhotoCell, dusk-to-dawn	PE	PhotoCell, dusk-to-dawn	PE	PhotoCell, dusk-to-dawn	PE	PhotoCell, dusk-to-dawn	PE	PhotoCell, dusk-to-dawn
DS	Dual switching (comes with 2 drivers and 2 light engines, see page 3 for details)	DS	Dual switching (comes with 2 drivers and 2 light engines, see page 3 for details)	DS	Dual switching (comes with 2 drivers and 2 light engines, see page 3 for details)	DS	Dual switching (comes with 2 drivers and 2 light engines, see page 3 for details)	DS	Dual switching (comes with 2 drivers and 2 light engines, see page 3 for details)
DMG	6-10 ft. dimming range (add external sensor for use with an external control, selected separately)	DMG	6-10 ft. dimming range (add external sensor for use with an external control, selected separately)	DMG	6-10 ft. dimming range (add external sensor for use with an external control, selected separately)	DMG	6-10 ft. dimming range (add external sensor for use with an external control, selected separately)	DMG	6-10 ft. dimming range (add external sensor for use with an external control, selected separately)
BCE	Bottom conduit entry for back box (PBB), Total of 4 entry points	BCE	Bottom conduit entry for back box (PBB), Total of 4 entry points	BCE	Bottom conduit entry for back box (PBB), Total of 4 entry points	BCE	Bottom conduit entry for back box (PBB), Total of 4 entry points	BCE	Bottom conduit entry for back box (PBB), Total of 4 entry points
BAA	Buy America's Act Compliant	BAA	Buy America's Act Compliant	BAA	Buy America's Act Compliant	BAA	Buy America's Act Compliant	BAA	Buy America's Act Compliant

One Lithonia Way • Cumers, Georgia 30012 • Phone: 1-800-705-SERV (7378) • www.lithonia.com
© 2019-2022 Acuity Brands Lighting, Inc. All rights reserved.



NEW POLE LIGHT DETAIL

NO SCALE



SITE LIGHTING PLAN

NO SCALE

SCALE: 1"=30'

SCALE: 1"=30'

SCALE: 1"=30'

SCALE: 1"=30'

SCALE: 1"=30'

SCALE: 1"=30'

SCALE: 1"=30'

SCALE: 1"=30'

SCALE: 1"=30'

SCALE: 1"=30'

SCALE: 1"=30'

SCALE: 1"=30'

SCALE: 1"=30'

SCALE: 1"=30'

SCALE: 1"=30'

SCALE: 1"=30'

SCALE: 1"=30'

SCALE: 1"=30'

SCALE: 1"=30'

SCALE: 1"=30'

SCALE: 1"=30'

SCALE: 1"=30'

SCALE: 1"=30'

SCALE: 1"=30'

SCALE: 1"=30'

SCALE: 1"=30'

SCALE: 1"=30'

SCALE: 1"=30'

SCALE: 1"=30'

SCALE: 1"=30'

SCALE: 1"=30'

SCALE: 1"=30'

SCALE: 1"=30'

SCALE: 1"=30'

SCALE: 1"=30'

SCALE: 1"=30'

SCALE: 1"=30'

SCALE: 1"=30'

SCALE: 1"=30'

SCALE: 1"=30'

SCALE: 1"=30'

SCALE: 1"=30'

SCALE: 1"=30'

SCALE: 1"=30'

SCALE: 1"=30'

SCALE: 1"=30'

SCALE: 1"=30'

SCALE: 1"=30'

SCALE: 1"=30'

SCALE: 1"=30'

SCALE: 1"=30'

SCALE: 1"=30'

SCALE: 1"=30'

SCALE: 1"=30'

SCALE: 1"=30'

SCALE: 1"=30'

SCALE: 1"=30'

SCALE: 1"=30'

SCALE: 1"=30'

SCALE: 1"=30'

SCALE: 1"=30'

SCALE: 1"=30'

SCALE: 1"=30'

SCALE: 1"=30'

SCALE: 1"=30'

SCALE: 1"=30'

SCALE: 1"=30'

SCALE: 1"=30'

SCALE: 1"=30'

SCALE: 1"=30'

SCALE: 1"=30'

SCALE: 1"=30'

SCALE: 1"=30'

SCALE: 1"=30'

SCALE: 1"=30'

SCALE: 1"=30'

SCALE: 1"=30'

SCALE: 1"=30'

SCALE: 1"=30'

SCALE: 1"=30'

SCALE: 1"=30'

SCALE: 1"=30'

SCALE: 1"=30'

SCALE: 1"=30'

SCALE: 1"=30'

SCALE: 1"=30'

SCALE: 1"=30'

SCALE: 1"=30'

SCALE: 1"=30'

SCALE: 1"=30'

SCALE: 1"=30'

SCALE: 1"=30'

SCALE: 1"=30'

SCALE: 1"=30'

SCALE: 1"=30'

SCALE: 1"=30'

