

LOCATION MAP N.T.S.

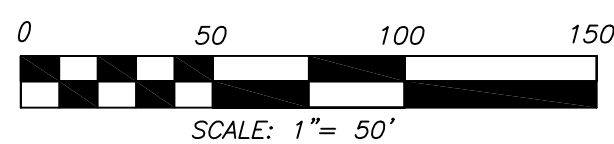
- NOTES:
- 1) ALL DIMENSIONS AND AREAS ARE SCALED AND SUBJECT TO CHANGE ON THE FINAL PLAT.
 - 2) A 10' DRAINAGE, UTILITY AND CONSTRUCTION EASEMENT EXISTS INSIDE ALL EXTERIOR LOT LINES AND ROAD LINES, 5' EACH SIDE OF INTERIOR ROAD LINES.
 - 3) A 15' UTILITY EASEMENT EXISTS 7.5' EACH SIDE OF CENTERLINE OF SANITARY SEWER AS INSTALLED.
 - 4) THIS PROPERTY CONTAINS APPROXIMATELY 17.85 ACRES AND IS SUBDIVIDED INTO 64 SINGLE FAMILY LOTS AND COMMON AREA. THIS PROPERTY IS ZONED RP-1.
 - 5) CONTOURS PROVIDED BY KNOXVILLE/KNOX COUNTY G.I.S. SUPPLEMENTED WITH FIELD RUN CONTOURS IN PREVIOUSLY DISTURBED AREAS.
 - 6) UTILITIES:
 - 7) WATER: KNOXVILLE UTILITIES BOARD
SEWER: HALLSDALE POWELL UTILITY DISTRICT
ELECTRIC: KNOXVILLE UTILITIES BOARD
GAS: KNOXVILLE UTILITY BOARD
TELEPHONE: AT&T

UNIT 1	2.65 ACRES	2 LOTS
UNIT 2	26.91 ACRES	84 LOTS
UNIT 3	12.04 ACRES	32 LOTS
UNIT 4	12.28 ACRES	33 LOTS
UNIT 5	17.85 ACRES	64 LOTS
TOTALS	71.73 ACRES	215 LOTS
DENSITY	2.997 LOTS PER ACRE	



SYMBOL LEGEND

- IRON PIN FOUND
- IRON PIN SET
- NON-MONUMENTED POINT
- ⊙ WATER METER
- ⊙ WATER VALVE
- ⊙ FIRE HYDRANT
- ⊙ GAS VALVE
- ⊙ MANHOLE
- ⊙ UTILITY POLE
- ⊙ LIGHT POLE
- ⊙ CABLE TV
- ⊙ ELECTRIC BOX
- ⊙ TELEPHONE BOX
- ⊙ FENCE LINE
- ⊙ SANITARY SEWER
- ⊙ STORM SEWER
- ⊙ OVER-HEAD UTILITIES
- ⊙ CATCH BASIN
- ⊙ CURB INLET



10-SD-17-C / 10-H-17-UR
Revised: 11/6/2017

I HEREBY CERTIFY THAT I AM AN ENGINEER, LICENSED TO PRACTICE ENGINEERING UNDER THE LAWS OF THE STATE OF TENNESSEE. I FURTHER CERTIFY THAT THIS PLAN AND ACCOMPANYING DRAWINGS, DOCUMENTS, AND STATEMENTS CONFORM TO ALL APPLICABLE PROVISIONS OF THE KNOXVILLE/KNOX COUNTY SUBDIVISION REGULATIONS EXCEPT AS HAS BEEN ITEMIZED, DESCRIBED, AND JUSTIFIED IN A REPORT FILED WITH THE METROPOLITAN PLANNING

ENGINEER: HAYDEN H HORTON

9080 BARBEE LANE, STE 101
KNOXVILLE, TN 37925
DISK: 865.539.6800
FAX: 865.539.6813
haydenh@hvvonline.com

NOT FOR
CONSTRUCTION

CONCEPT PLAN
FOR
STRATFORD PARK
UNIT 5

Copyright © 2017

CITY: KNOXVILLE
COUNTY: KNOX
STATE: TENNESSEE

DISTRICT: 38
WARD: 38

CLT MAP: 057
GROUP: 11/06/2017
PARCEL: PART OF 125.01

PLAT:

DEED: 201012140036620

REVISIONS:
08/28/2017
INITIAL SUBMITTAL
11/06/2017
PER MPC COMMENTS

JOB NUMBER
1103002

DRAWN BY
HHH

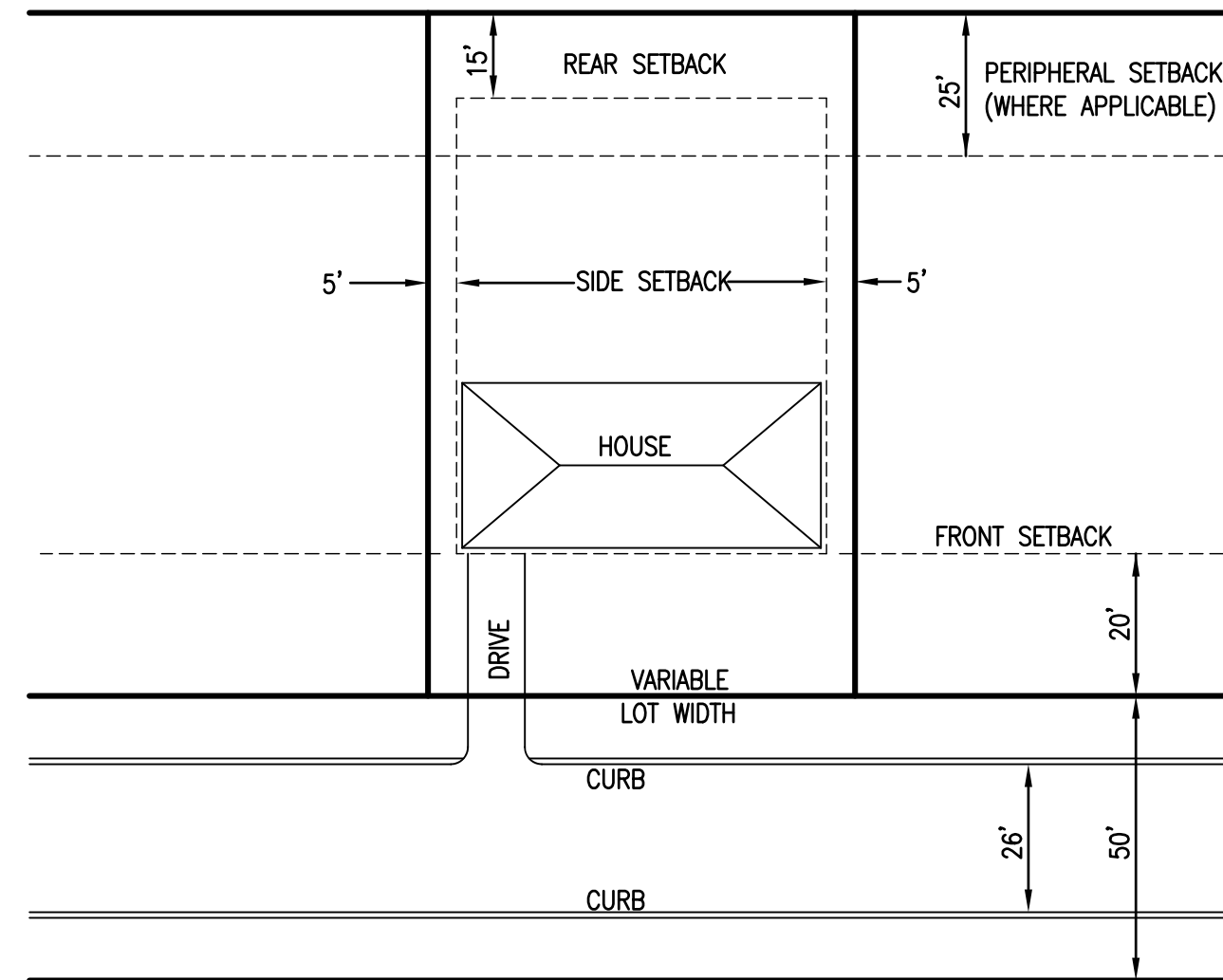
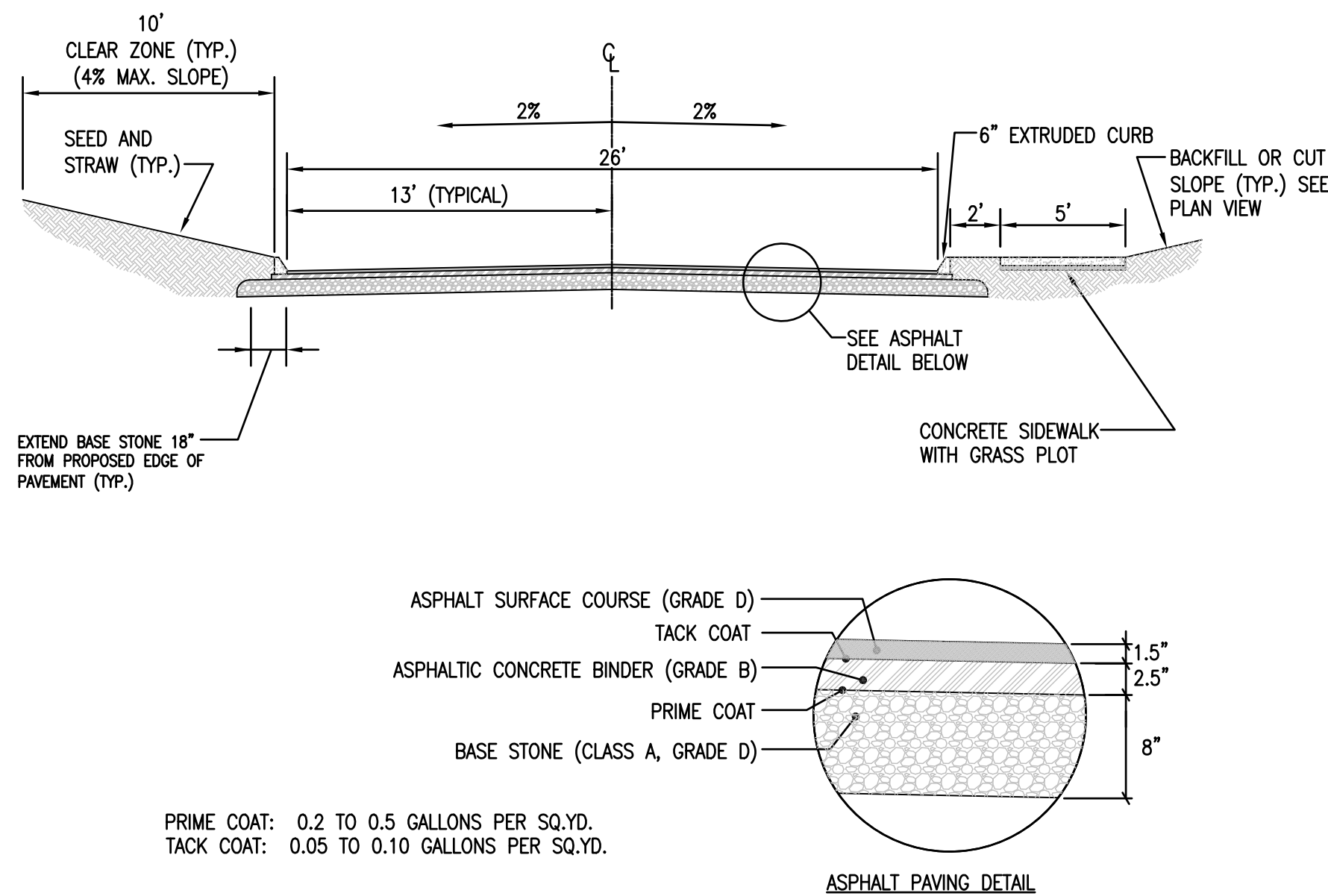
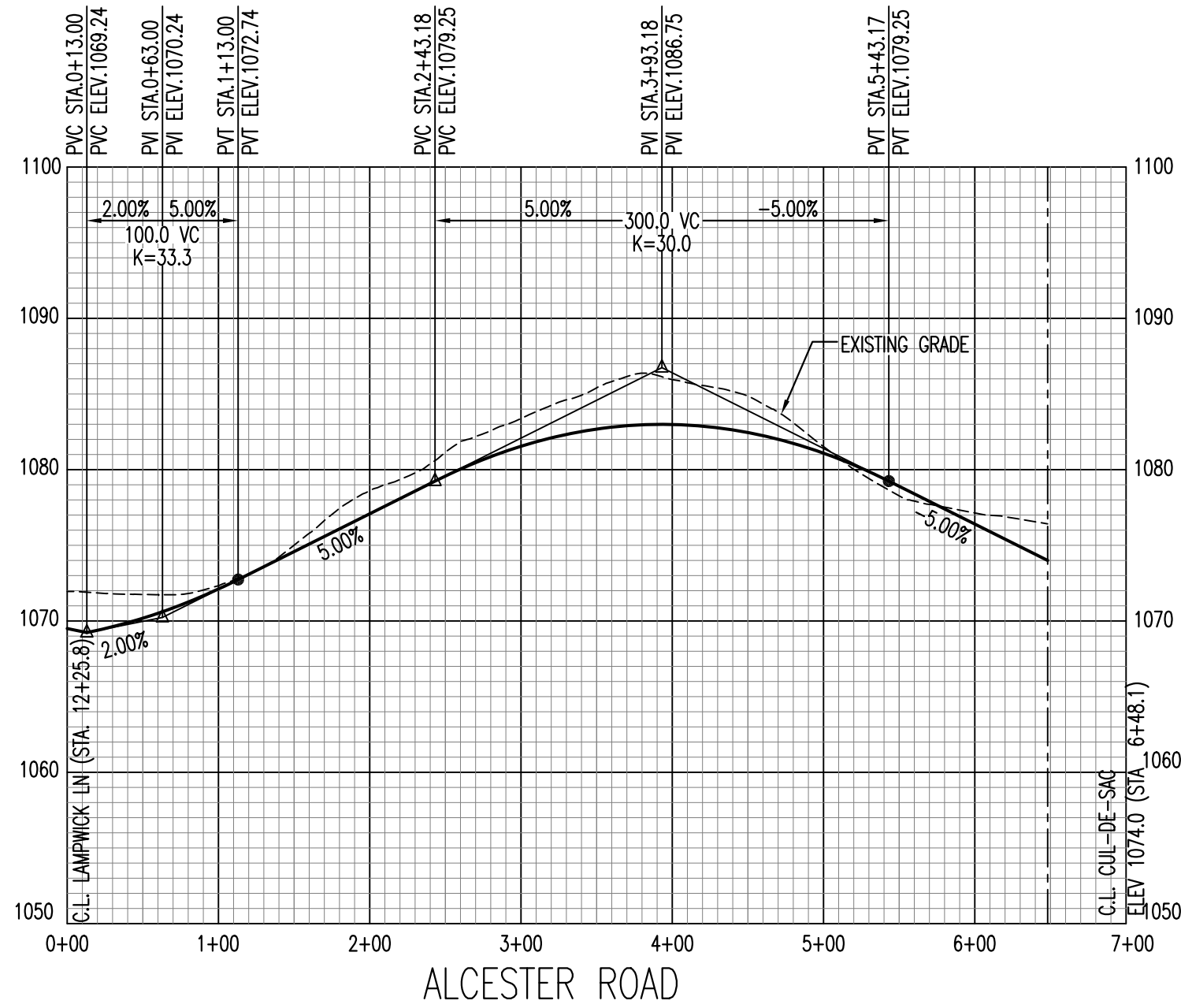
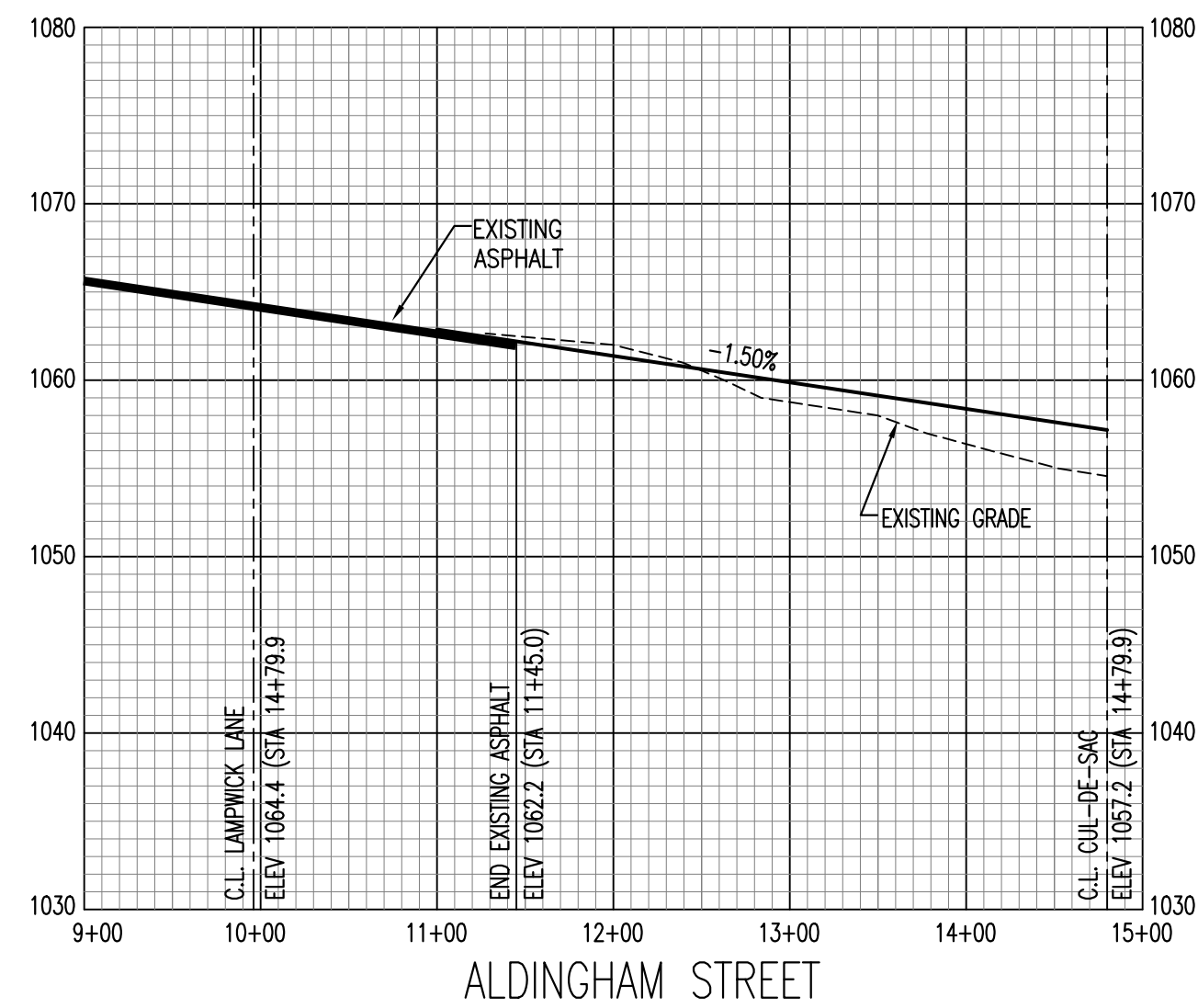
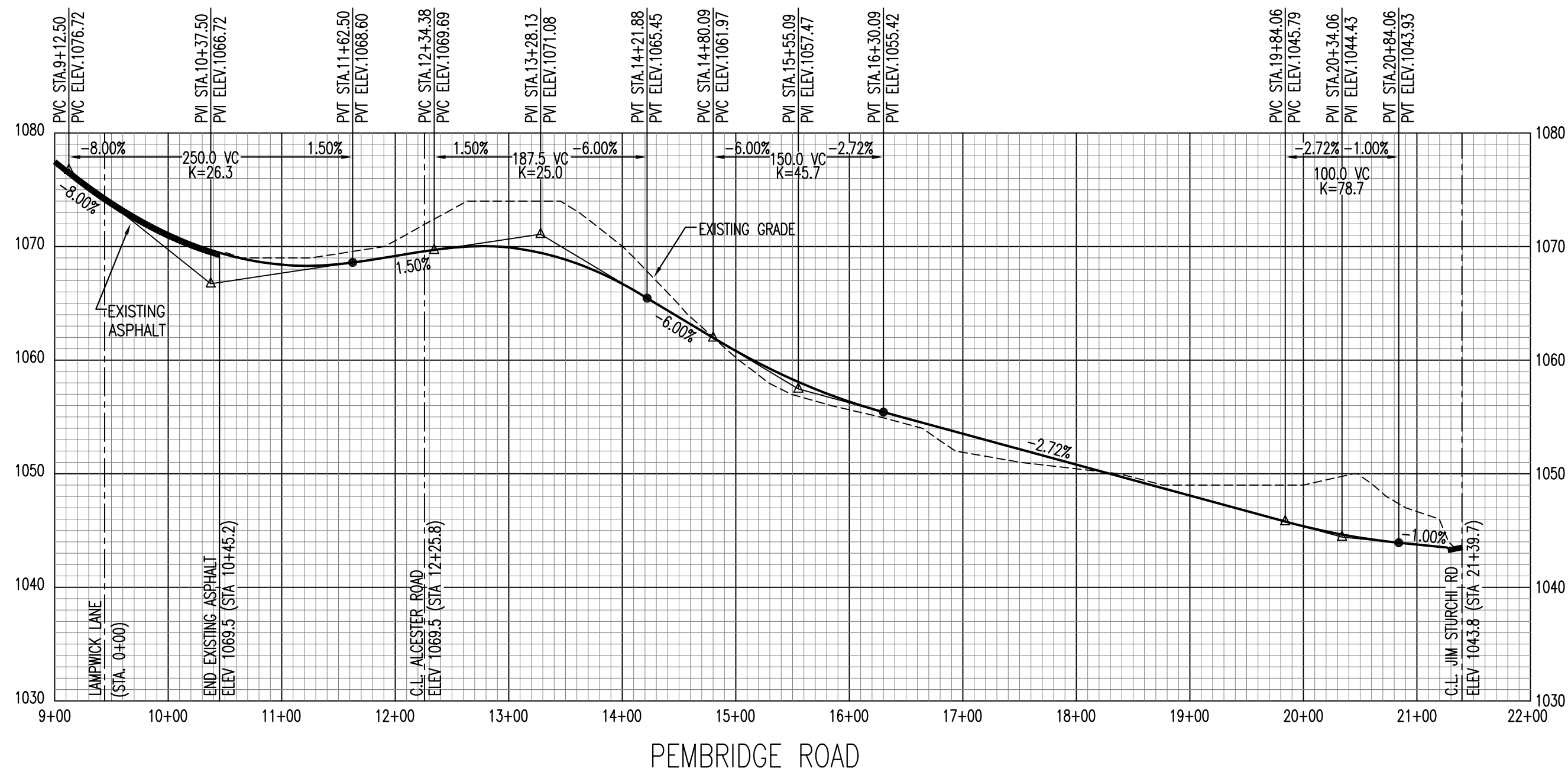
CHECKED BY
HHH

SURVEY DATE
N/A

DRAWING TITLE
UNIT 5 11-06.DWG

DRAWING SCALE
1" = 50'

1 sheet
of 3



CERTIFICATION OF CONCEPT PLAN
I HEREBY CERTIFY THAT I AM AN ENGINEER, LICENSED TO PRACTICE ENGINEERING UNDER THE LAWS OF THE STATE OF TENNESSEE. I FURTHER CERTIFY THAT THIS PLAN AND ACCOMPANYING DRAWINGS, DOCUMENTS, AND STATEMENTS CONFORM TO ALL APPLICABLE PROVISIONS OF THE KNOXVILLE/KNOX COUNTY SUBDIVISION REGULATIONS EXCEPT AS HAS BEEN ITEMIZED, DESCRIBED, AND JUSTIFIED IN A REPORT FILED WITH THE METROPOLITAN PLANNING COMMISSION.
REGISTERED ENGINEER
TENNESSEE CERTIFICATE NO.: 107463

CONCEPT PLAN
FOR
STRATFORD PARK
UNIT 5

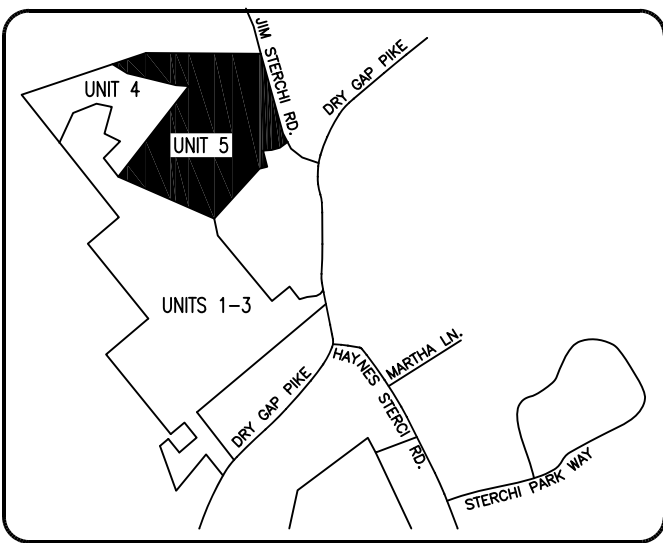
Copyright ©2017
CITY: KNOXVILLE
COUNTY: KNOX
STATE: TENNESSEE
DISTRICT:
WARD: 38
CLT MAP: 057
GROUP:
PARCEL: PART OF 125.01
PLAT:
DEED: 201012140036620
REVISIONS:
08/28/2017
INITIAL SUBMITTAL
11/06/2017
PER MPC COMMENTS

JOB NUMBER
1103002
DRAWN BY
HHH
CHECKED BY
HHH
SURVEY DATE
N/A
DRAWING TITLE
UNIT 5 11-06.DWG
DRAWING SCALE
1" = 100' (10' VERT.)

10-SD-17-C / 10-H-17-UR
Revised: 11/6/2017

ENGINEER: HAYDEN H HORTON
9080 BARBEE LANE, STE 101
KNOXVILLE, TN 37923
DESK: 865.539.6800
FAX: 865.539.6813
haydenh@hwwonline.com

NOT FOR
CONSTRUCTION



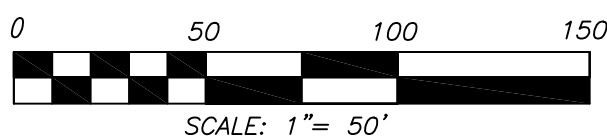
LOCATION MAP N.T.S.

- NOTES:
- 1) ALL DIMENSIONS AND AREAS ARE SCALED AND SUBJECT TO CHANGE ON THE FINAL PLAN.
 - 2) A 10' DRAINAGE, UTILITY AND CONSTRUCTION EASEMENT EXISTS INSIDE ALL EXTERIOR LOT LINES AND ROAD LINES, 5' EACH SIDE OF INTERIOR ROAD LINES.
 - 3) A 15' UTILITY EASEMENT EXISTS 7.5' EACH SIDE OF CENTERLINE OF SANITARY SEWER AS INSTALLED.
 - 4) THIS PROPERTY CONTAINS APPROXIMATELY 17.85 ACRES AND IS SUBDIVIDED INTO 64 SINGLE FAMILY LOTS AND COMMON AREA. THIS PROPERTY IS ZONED RP-1.
 - 5) CONTOURS PROVIDED BY KNOXVILLE/KNOX COUNTY G.I.S. SUPPLEMENTED WITH FIELD RUN CONTOURS IN PREVIOUSLY DISTURBED AREAS.
 - 6) UTILITIES:
WATER: KNOXVILLE UTILITIES BOARD
SEWER: HALLSBAUGH POWELL UTILITY DISTRICT
ELECTRIC: KNOXVILLE UTILITIES BOARD
GAS: KNOXVILLE UTILITIES BOARD
TELEPHONE: AT&T
 - 7)

UNIT 1	2.85 ACRES	2 LOTS
UNIT 2	26.91 ACRES	84 LOTS
UNIT 3	12.04 ACRES	32 LOTS
UNIT 4	12.28 ACRES	33 LOTS
UNIT 5	17.85 ACRES	64 LOTS
TOTALS	71.73 ACRES	215 LOTS
DENSITY	2.997 LOTS PER ACRE	



- SYMBOL LEGEND**
- IRON PIN FOUND
 - IRON PIN SET
 - NON-MONUMENT POINT
 - WATER METER
 - WATER VALVE
 - FIRE HYDRANT
 - GAS VALVE
 - MANHOLE
 - UTILITY POLE
 - LIGHT POLE
 - CABLE TV
 - ELECTRIC BOX
 - TELEPHONE BOX
 - FENCE LINE
 - SANITARY SEWER
 - STORM SEWER
 - OVER-HEAD UTILITIES
 - CATCH BASIN
 - CURB INLET



SCALE: 1" = 50'

I HEREBY CERTIFY THAT I AM AN ENGINEER, LICENSED TO PRACTICE ENGINEERING UNDER THE LAWS OF THE STATE OF TENNESSEE. I FURTHER CERTIFY THAT THIS PLAN AND ACCOMPANYING DRAWINGS, DOCUMENTS, AND STATEMENTS CONFORM TO ALL APPLICABLE PROVISIONS OF THE KNOXVILLE/KNOX COUNTY SUBDIVISION REGULATIONS EXCEPT AS HAS BEEN ITEMIZED, DESCRIBED, AND JUSTIFIED IN A REPORT FILED WITH THE METROPOLITAN PLANNING

10-SD-17-C / 10-H-17-UR
Revised: 11/6/2017

GRADING PLAN FOR STRATFORD PARK UNIT 5

Copyright © 2017

CITY: KNOXVILLE
COUNTY: KNOX
STATE: TENNESSEE
DISTRICT:
WARD: 38
CLT MAP: 057
GROUP:
PARCEL: PART OF 125.01
PLAT:
DEED: 201012140036620

REVISIONS:
11/06/2017
INITIAL SUBMITTAL

JOB NUMBER
1103002
DRAWN BY
HHH
CHECKED BY
HHH
SURVEY DATE
N/A
DRAWING TITLE
UNIT 5 11-06.DWG
DRAWING SCALE
1" = 50'

3 sheet
of 3

ENGINEER: HAYDEN H HORTON

9080 BARBEE LANE, STE 101
KNOXVILLE, TN 37923
DISK: 865.539.6800
FAX: 865.539.6813
haydenh@hnhonline.com

NOT FOR
CONSTRUCTION