

2-A-18-UR
Revised: 1/23/2018

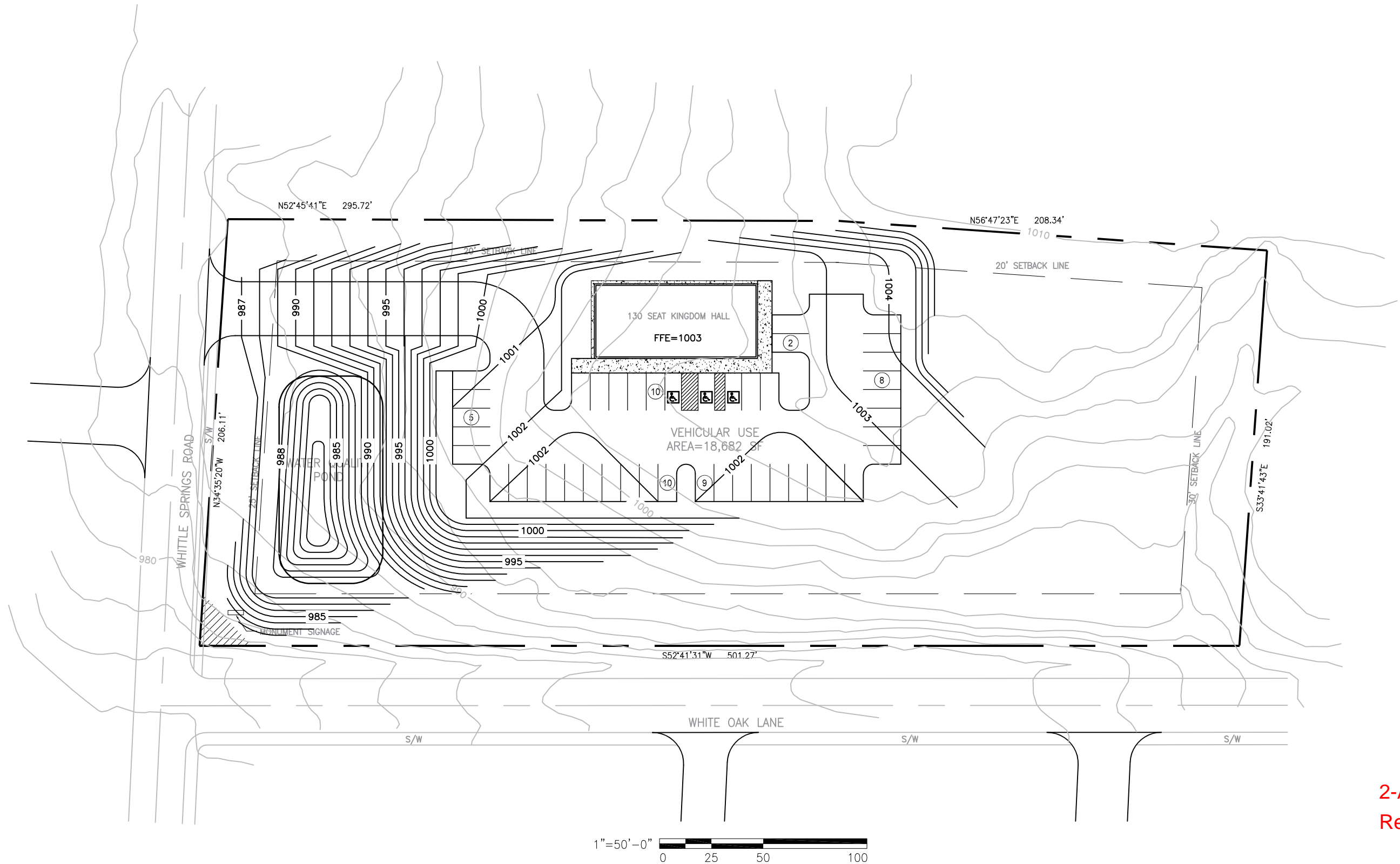
2.338 AC

PROPOSED USE: PLACE OF WORSHIP (USE #51 PER CITY PARKING ORDINANCE)
PARKING REQUIRED: 130 SEATS x .25 = 33 SPACES
PARKING PROVIDED: 44 SPACES

KINGDOM HALL - 4400 WHITTLE SPRINGS ROAD

**CONCEPTUAL SITE PLAN LAYOUT
2018-01-22**

**J.W. CONGREGATION
SUPPORT, INC.**



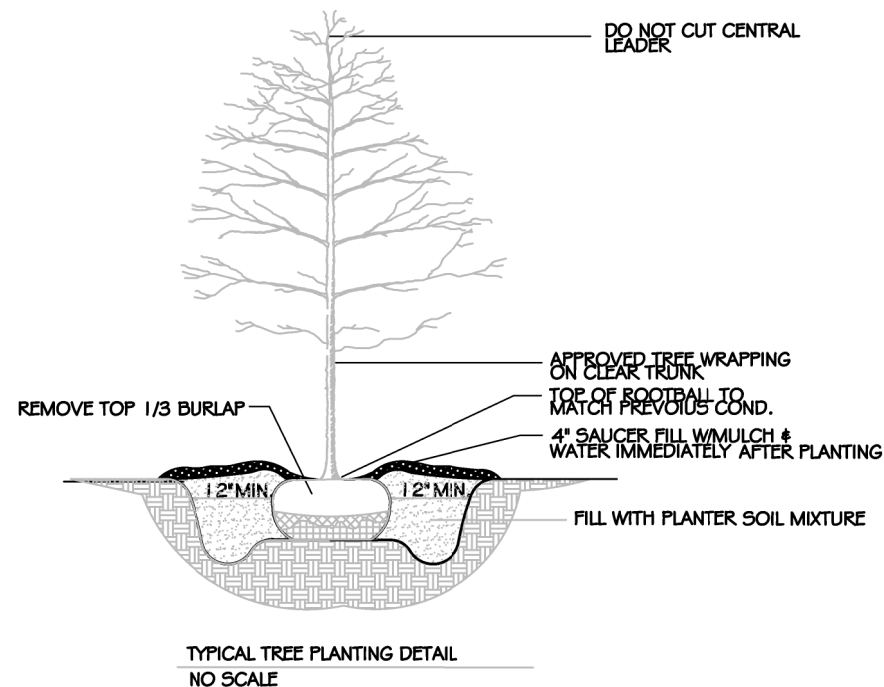
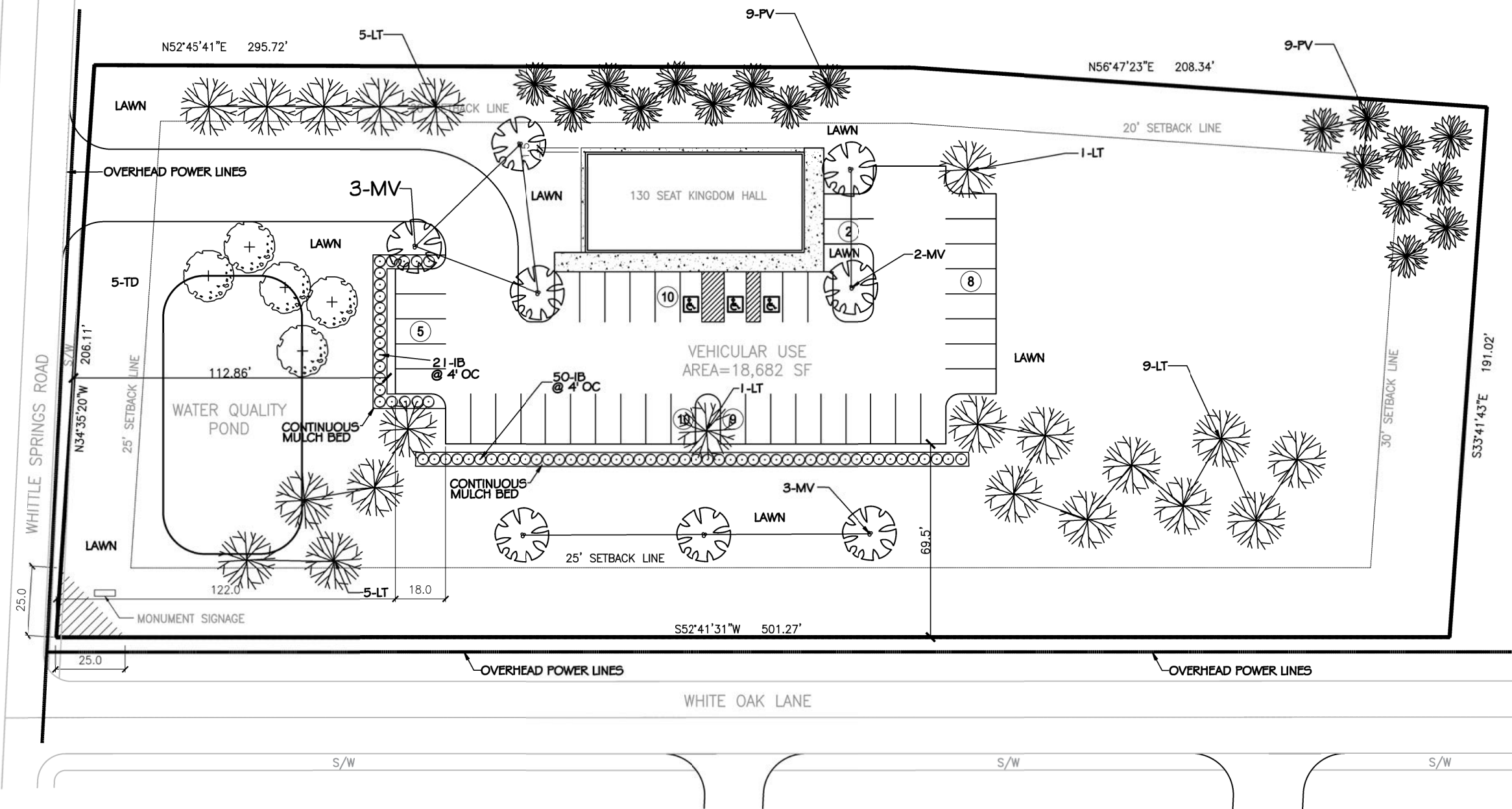
2-A-18-UR
Revised: 1/23/2018

2.338 AC

PROPOSED USE: PLACE OF WORSHIP (USE #51 PER CITY PARKING ORDINANCE)
PARKING REQUIRED: 130 SEATS x .25 = 33 SPACES
PARKING PROVIDED: 44 SPACES

KINGDOM HALL - 4400 WHITTLE SPRINGS ROAD
CONCEPTUAL GRADING PLAN LAYOUT
2018-01-22

**J.W. CONGREGATION
SUPPORT, INC.**



P L A N T S C H E D U L E					
KEY	PLANT NAME	QUAN.	HT. / SPR.	TRUNK	REMARKS
TREES OVER 50' AT MATURITY					
LT	LIRIODENDRON TULIPIFERA / TULIP POPLAR	20	12' / 6'	2" CAL.	4' CLEAR TRUNK, MATCHED
TD	TAXODIUM DISTICHUM / AMERICAN BALDCYPRESS	5	12' / 6'	2" CAL.	4' CLEAR TRUNK, MATCHED
TREES UNDER 50' AT MATURITY					
MV	MAGNOLIA GRANDIFLORA VIRGINIANA / SWEETBAY MAGNOLIA	8	12' / 6'	MULTIPLE	3-5 TRUNKS OF EQUAL DIAMETER
PV	PINUS VIRGINIANA / VIRGINIA PINE	18	8' / 5'	FULL TO BASE	MATCHED
SHRUBS					
IB	ILEX CORNUTA BURFORDI NANA / DWARF BURFORDI HOLLY	71	24" / 24"	FULL TO BASE	SPACE @ 48" O.C.
GROUND COVER					
LAWN	SOLID SOD ALL SLOPES OVER 3 TO 1 WITH REBEL 4 FESCUE. SEED ALL AREAS DISTURBED BY CONSTRUCTION WITH REBEL 4 FESCUE AT RATE OF 8 POUNDS PER 1,000 SQ. FT..				

LANDSCAPE REQUIREMENTS:
2.338 ACRES
8 TREES REQUIRED PER ACRE=19 TREES
TREES PROVIDED=51 TREES

PLANTINGS REQUIRED PER CITY OF KNOXVILLE PARKING ORDINANCE AMENDMENT PAGE 21 ITEM J. PARKING LOT LANDSCAPING DATED OCT. 10, 2017 =.

3 TREES PER 100' ROW + 10 SHRUBS PER 100' ROW
707.37 LN FT ROW = 21 TREES + 71 SHRUBS
TREES PROVIDED=21 SHRUBS PROVIDED=71

TREE PROTECTION REQUIREMENTS:
THERE ARE NO TREES ON SITE TO BE PROTECTED.

2-A-18-UR
Revised: 1/23/2018

KINGDOM HALL - 4400 WHITTLE SPRINGS ROAD
CONCEPTUAL LANDSCAPE PLAN
2018-1-22

EXTERIOR FEATURES

LOCAL DESIGN/CONSTRUCTION
REVISION: 19 AUGUST 2016



PICTURED: USA130
For reference only. Not for construction.

EXTERIOR FEATURES

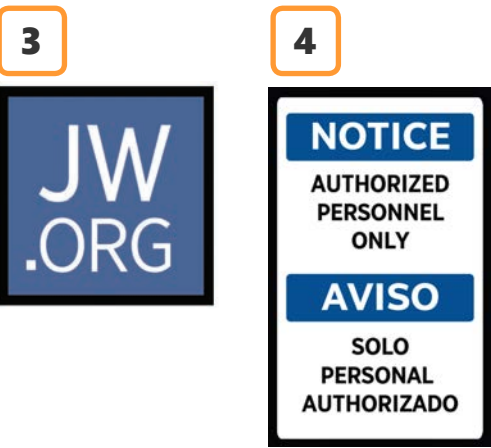
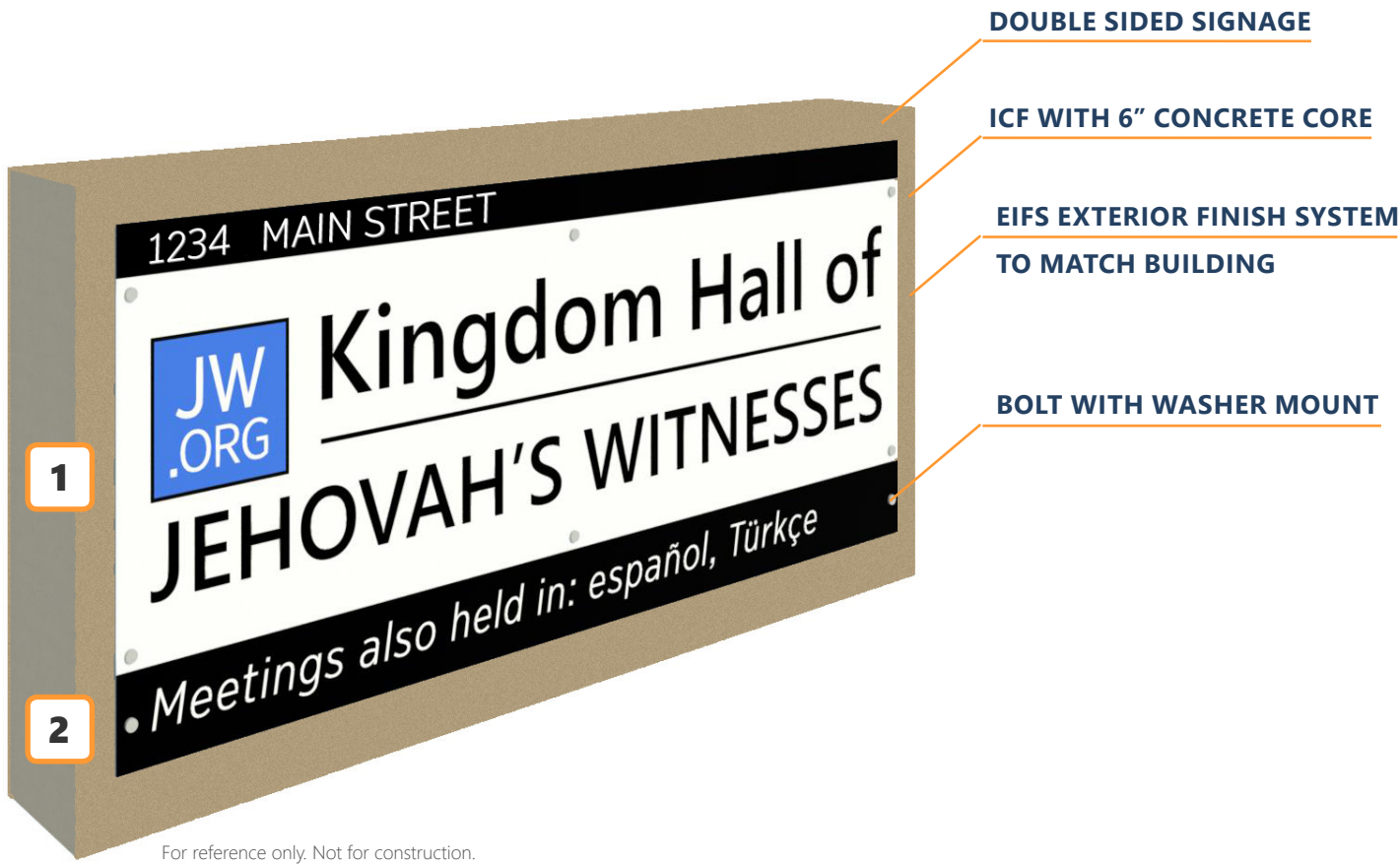
- | | | | |
|----------|---|----------|---------------------|
| 1 | Exterior Insulation Finishing System (EIFS)
Synthetic Stucco | 5 | Emergency Exit Door |
| 2 | Stacked Stone Cladding | 6 | Building Signage |
| 3 | Stepped Parapet Profile | 7 | Streetside Monument |
| 4 | Double Glass Door Entryway | | |

2-A-18-UR
12/22/2017



EXTERIOR FEATURES

EXTERIOR SIGNAGE



OVERVIEW

- All buildings will have a standard monument sign
- Monument located at street side entrance as allowed by local code

DETAILS

ELEMENT	FEATURES
1	<ul style="list-style-type: none">• Address, "Kingdom Hall of Jehovah's Witnesses", JW.ORG• Located on monument• 7'-6" wide x 2' 8" high• Metal material that is corrosive resistant with vinyl background• Sealed surface with clear lacquer• Street number and name• Text color varies
2	<ul style="list-style-type: none">• "Meetings also held in:"• Located on monument• 7'-6" wide x 8" high strip• Metal material with black vinyl background• Sealed surface with clear lacquer• Text added only when meetings are held in additional languages• White text. Text height to adjust as needed
3	<ul style="list-style-type: none">• JW.ORG• Located on building• 24" wide x 24" high• Metal material that is corrosive resistant with RGB 74, 109, 167 background and black border• Sealed surface with clear lacquer• White text
4	<ul style="list-style-type: none">• "Notice Authorized Personnel Only"• Located on roof ladder cover• 10" wide x 7" high• Metal material that is corrosive resistant with white and blue background• Sealed surface with clear lacquer• Combination of white and black text• English and Spanish text

2-A-18-UR
12/22/2017



PICTURED: USA130
For reference only. Not for construction.

STANDARD EXTERIOR COLORS

DESCRIPTION: Sto® Essence DPR, medium sand texture/EIFS System



Sherwin Williams Divine White (SW6105)

Sherwin Williams Latte (SW6108)

Sherwin Williams Brainstorm Bronze (SW7033)

2-A-18-UR
12/22/2017

STACKED STONE

DESCRIPTION: Stonecraft Hudson Farmledge

