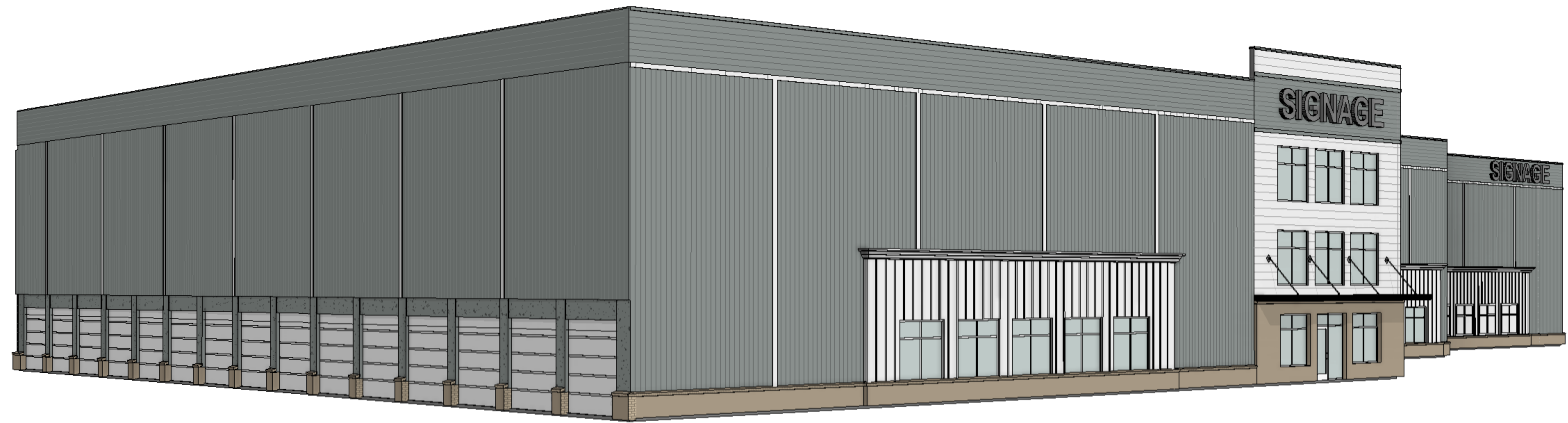


① CONCEPTUAL PERSPECTIVE



② CONCEPTUAL PERSPECTIVE

RELEASED FOR OWNER REVIEW - NOT FOR CONSTRUCTION. THIS DOCUMENT HAS BEEN PREPARED FOR MILLER VALENTINE CONSTRUCTION LLC AND THE INFORMATION CONTAINED HEREIN IS CONSIDERED CONFIDENTIAL. THIS DOCUMENT IS NOT TO BE USED, REPRODUCED OR DISCLOSED IN WHOLE OR IN PART WITHOUT THE PRIOR WRITTEN PERMISSION OF MILLER VALENTINE CONSTRUCTION, LLC IN EACH CASE.

CALLAHAN DRIVE CCSS - OPTION 1.2
 305 CALLAHAN DRIVE KNOXVILLE, TN 37912



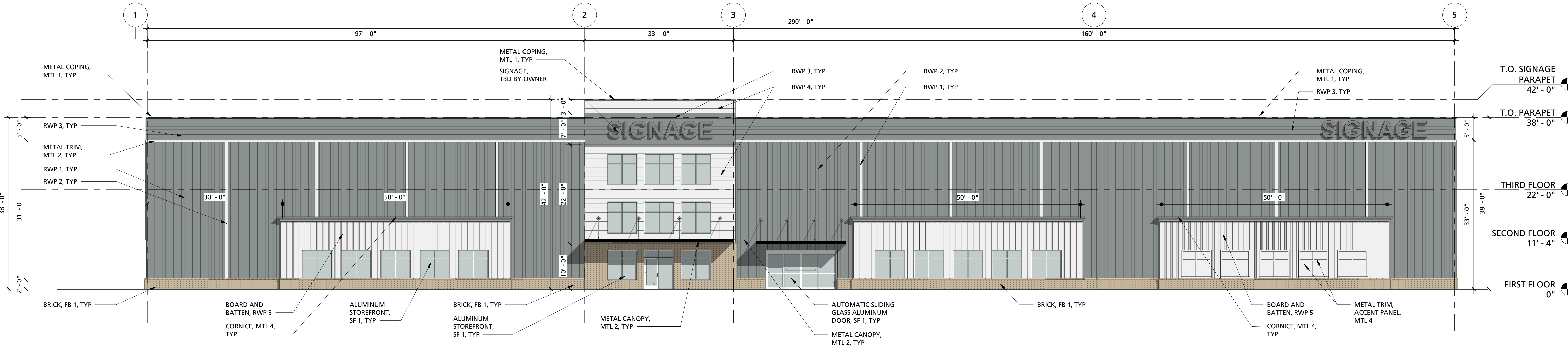
221 PICKENS STREET (29205)
 POST OFFICE BOX 5875
 COLUMBIA, SOUTH
 CAROLINA
 29250
 803.834.4048 p
 803.834.4082 f
 WWW.1X1DESIGN.COM

DATE
01.20.26

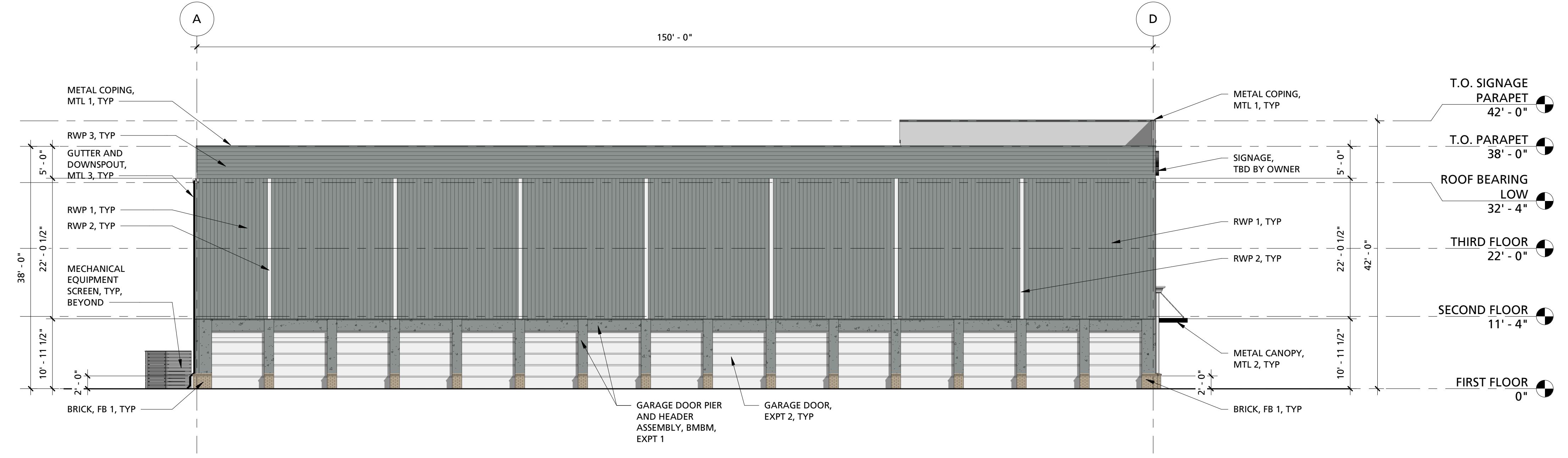
JOB NO.
C-25-055

PERPSECTIVE

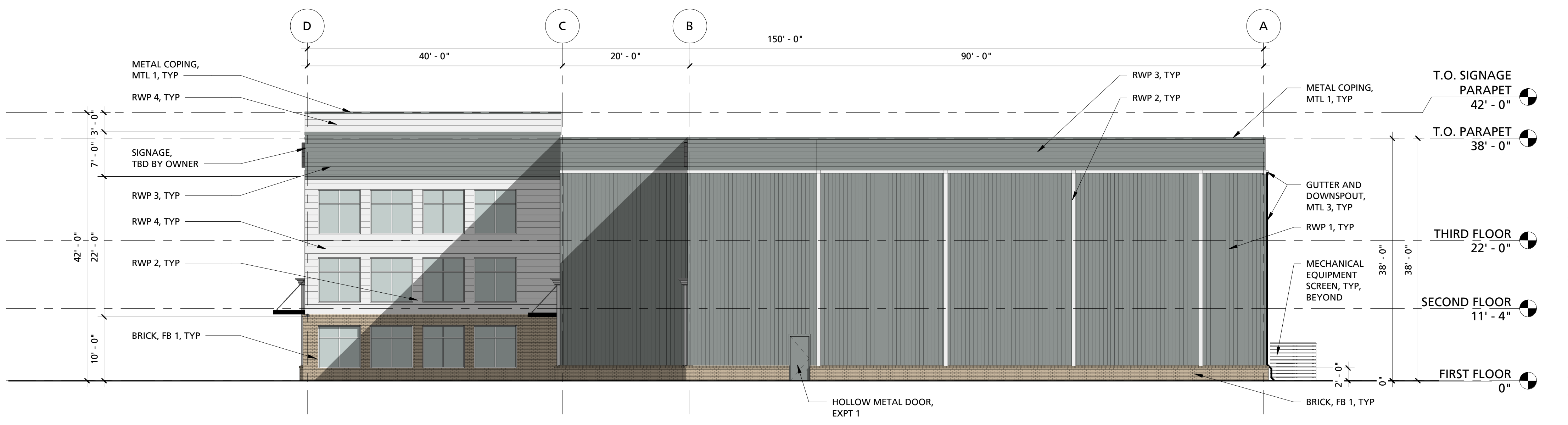
SK-A1.1



4 SOUTH ELEVATION
3/32" = 1'-0"



2 WEST ELEVATION
3/32" = 1'-0"



3 EAST ELEVATION
3/32" = 1'-0"

THIS DOCUMENT HAS BEEN PREPARED FOR MILLER VALENTINE CONSTRUCTION LLC AND THE INFORMATION CONTAINED HEREIN IS CONSIDERED CONFIDENTIAL. THIS DOCUMENT IS NOT TO BE USED, REPRODUCED OR DISCLOSED IN WHOLE OR IN PART WITHOUT THE PRIOR WRITTEN PERMISSION OF MILLER VALENTINE CONSTRUCTION, LLC IN ANY MANNER.

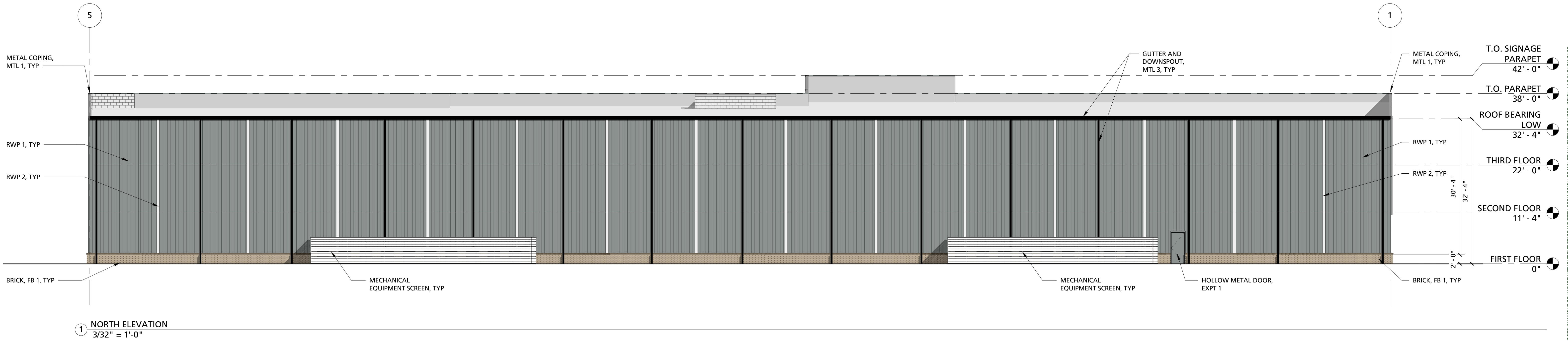
CALLAHAN DRIVE CCSS - OPTION 1.2
 305 CALLAHAN DRIVE KNOXVILLE, TN 37912



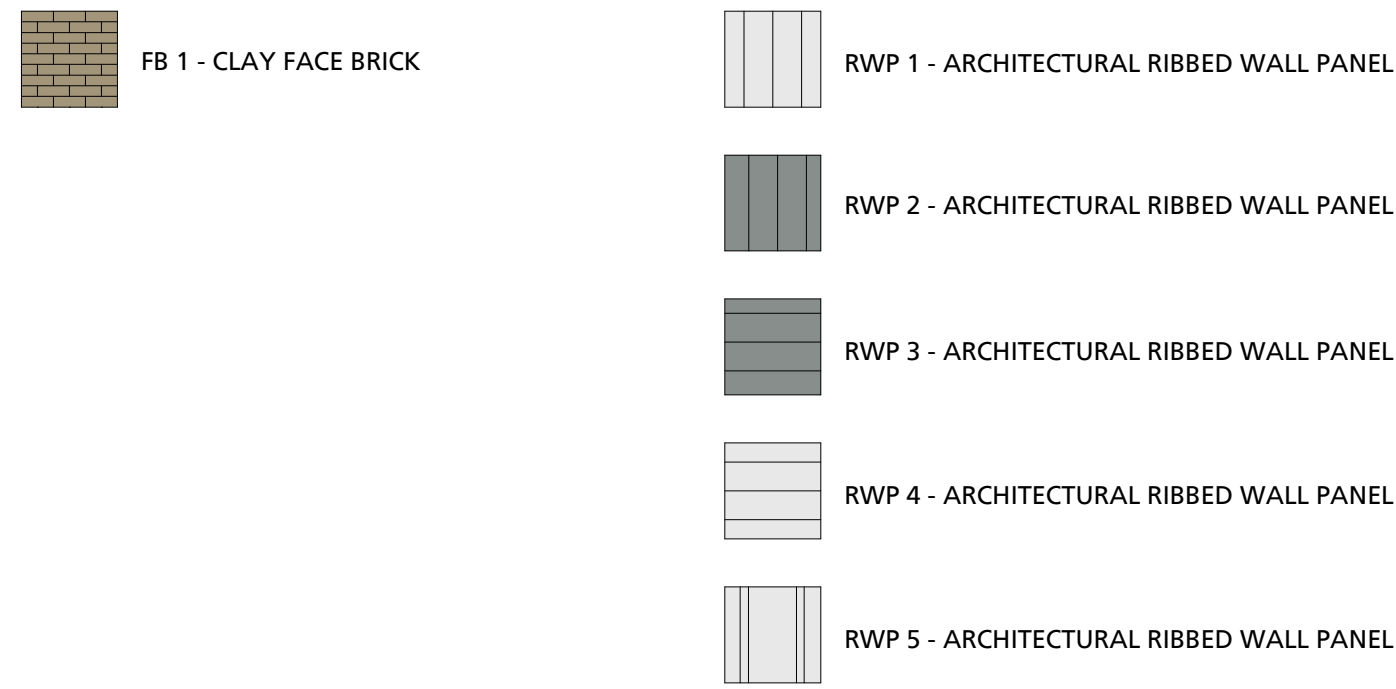
221 PICKENS STREET (29205)
 POST OFFICE BOX 5875
 COLUMBIA, SOUTH CAROLINA
 29250
 803.834.4048 p
 803.834.4082 f
 WWW.1X1DESIGN.COM

DATE
 01.20.26
 JOB NO.
 C-25-055
 ELEVATIONS

SK-A1.2



EXTERIOR MATERIAL KEY



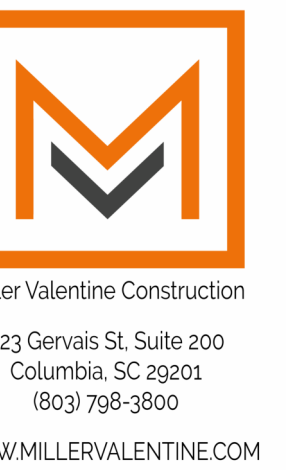
CODE OF ORDINANCES - KNOXVILLE, TN

ARTICLE 5.4.A (COMMERCIAL DISTRICTS DESIGN STANDARDS)
 TRANSPARENCY REQUIREMENT: 30% BETWEEN 2FT AND 10FT @ SOUTH ELEVATION ONLY ON GROUND LEVEL.
 SOUTH ELEVATION = 350 LINEAR FEET
 350 LINEAR FEET X 8FT = 2,800 SF SURFACE AREA
 2,800 SF SURFACE AREA X 30% = 840 SF REQUIRED
 PROPOSED TRANSPARENCY: 844 SF

EXTERIOR MATERIAL LEGEND

<p>FB 1 - BRICK</p> <p>MFR: TRIANGLE BRICK COMPANY COLOR: SOUTHAMPTON SIZE: ENGINEER MORTAR MFR: ARGOS MORTAR COLOR: TO BE SELECTED FROM MFR'S FULL RANGE</p>	<p>MTL 1 - ALUMINUM ROOF SPECIALTIES (COPING)</p> <p>MFR: MCELROY OR EQUAL FINISH: KYNAR 500 COLOR: ASH GRAY</p>
<p>SF 1 - ALUMINUM FRAMED ENTRANCES AND STOREFRONT</p> <p>MFR: TO BE SELECTED FROM BUT NOT LIMITED TO: YKK KAWNEER OLDCASTLE BUILDING ENVELOPE</p> <p>PRODUCT: TBD FINISH: ANODIC COLOR: CLEAR ANODIZED</p>	<p>MTL 2 - AWNING</p> <p>MFR: MCELROY OR EQUAL FINISH: KYNAR 500 COLOR: MATTE BLACK</p>
<p>EXPT 1 - EXTERIOR PAINT (EXTERIOR DOORS)</p> <p>MFR: SHERWIN WILLIAMS OR EQUAL FINISH: SEMI-GLOSS COLOR: TBD *MATCH RWP 1, SEE ELEVATIONS</p>	<p>MTL 3 - GUTTERS / DOWNSPOUTS</p> <p>MFR: MCELROY OR EQUAL FINISH: KYNAR 500 COLOR: MATTE BLACK</p>
<p>EXPT 2 - EXTERIOR PAINT (EXTERIOR GARAGE DOORS)</p> <p>MFR: SHERWIN WILLIAMS OR EQUAL FINISH: SEMI-GLOSS COLOR: TBD *MATCH RWP 1, SEE ELEVATIONS</p>	<p>RWP 1 - ARCHITECTURAL RIBBED WALL PANEL (GENERAL FIELD)</p> <p>MFR: MCELROY OR EQUAL STYLE: 7.2 PANEL (VERTICAL) FINISH: KYNAR 500 THICKNESS: 24 GAUGE COLOR: ASH GRAY</p>
<p>MRP 1 - METAL ROOF PANEL</p> <p>MFR: MCELROY OR EQUAL STYLE: MAXIMA FINISH: KYNAR 500 THICKNESS: 24 GAUGE COLOR: TO BE SELECTED FROM MFR FULL RANGE</p> <p>NOTE: PER 2021 INTERNATIONAL ENERGY CONSERVATION CODE (WITH HOUSTON AMENDMENTS), THE FOLLOWING REQUIREMENTS MUST BE MET FOR LOW-SLOPED ROOFS DIRECTLY ABOVE COOLED CONDITIONED SPACES IN CLIMATE ZONES 1, 2 AND 3 SHALL COMPLY WITH ONE OR MORE OF THE OPTIONS IN TABLE C402.3:</p> <ol style="list-style-type: none"> THREE-YEAR AGED SOLAR REFLECTANCE INDEX 0.55 AND THERMAL EMITTANCE 0.75 THREE-YEAR-AGED SOLAR REFLECTANCE INDEX OF 64 	<p>RWP 2 - ARCHITECTURAL RIBBED WALL PANEL (ACCENT)</p> <p>MFR: MCELROY OR EQUAL STYLE: 7.2 PANEL (VERTICAL) FINISH: KYNAR 500 THICKNESS: 24 GAUGE COLOR: BONE WHITE</p>
	<p>RWP 3 - ARCHITECTURAL RIBBED WALL PANEL (ACCENT)</p> <p>MFR: MCELROY OR EQUAL STYLE: MEGA-RIB PANEL (HORIZONTAL) FINISH: KYNAR 500 THICKNESS: 24 GAUGE COLOR: ASH GRAY</p>
	<p>RWP 4 - ARCHITECTURAL RIBBED WALL PANEL (ACCENT)</p> <p>MFR: MCELROY OR EQUAL STYLE: MEGA-RIB PANEL (HORIZONTAL) FINISH: KYNAR 500 THICKNESS: 24 GAUGE COLOR: BONE WHITE</p>
	<p>RWP 5 - ARCHITECTURAL RIBBED WALL PANEL (ACCENT)</p> <p>MFR: MCELROY OR EQUAL STYLE: BOARD AND BATTEN FINISH: KYNAR 500 THICKNESS: 24 GAUGE COLOR: BONE WHITE</p>

CALLAHAN DRIVE CCSS - OPTION 1.2
 305 CALLAHAN DRIVE KNOXVILLE, TN 37912



221 PICKENS STREET (29205)
 POST OFFICE BOX 5875
 COLUMBIA, SOUTH CAROLINA 29250
 803.834.4048 p
 803.834.4082 f
 WWW.1X1DESIGN.COM

DATE: 01.20.26
 JOB NO.: C-25-055
 ELEVATIONS

SK-A1.3

THIS DOCUMENT HAS BEEN PREPARED FOR MILLER VALENTINE CONSTRUCTION LLC AND THE INFORMATION CONTAINED HEREIN IS CONSIDERED CONFIDENTIAL. THIS DOCUMENT IS NOT TO BE USED, REPRODUCED OR DISCLOSED IN WHOLE OR IN PART WITHOUT THE PRIOR WRITTEN PERMISSION OF MILLER VALENTINE CONSTRUCTION, LLC IN EACH CASE.

RELEASED FOR OWNER REVIEW - NOT FOR CONSTRUCTION

