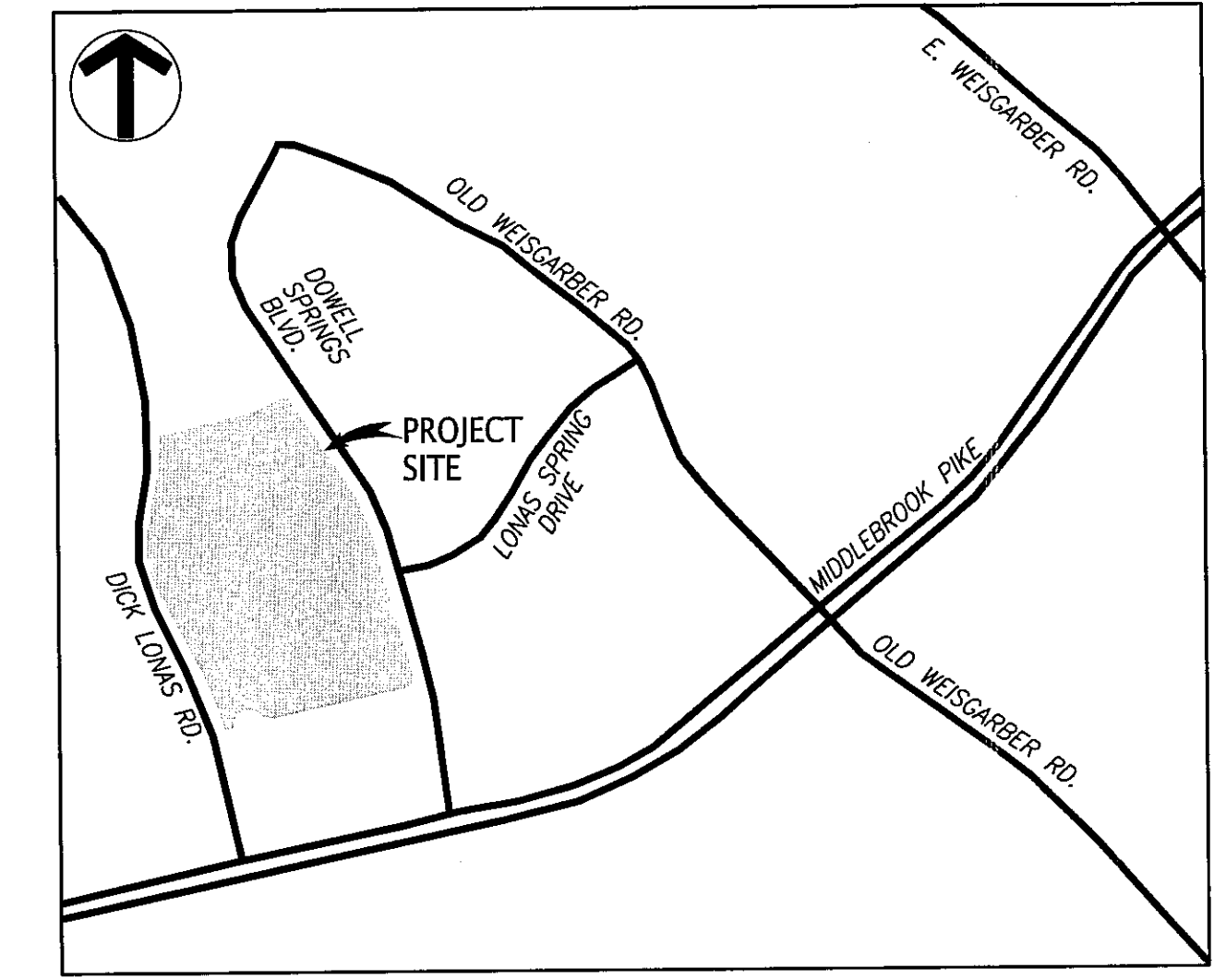
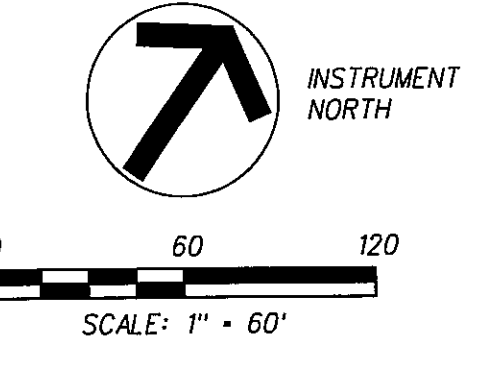


PROJ. MGR.	DESIGNED BY	DRAWN BY	DATE
WCF	JIS	KLM	12/31/12
			12/31/12
			No.
Project	Sheet		
415.001.3			
Date			
12/31/12			
Scale			
1"=60'			

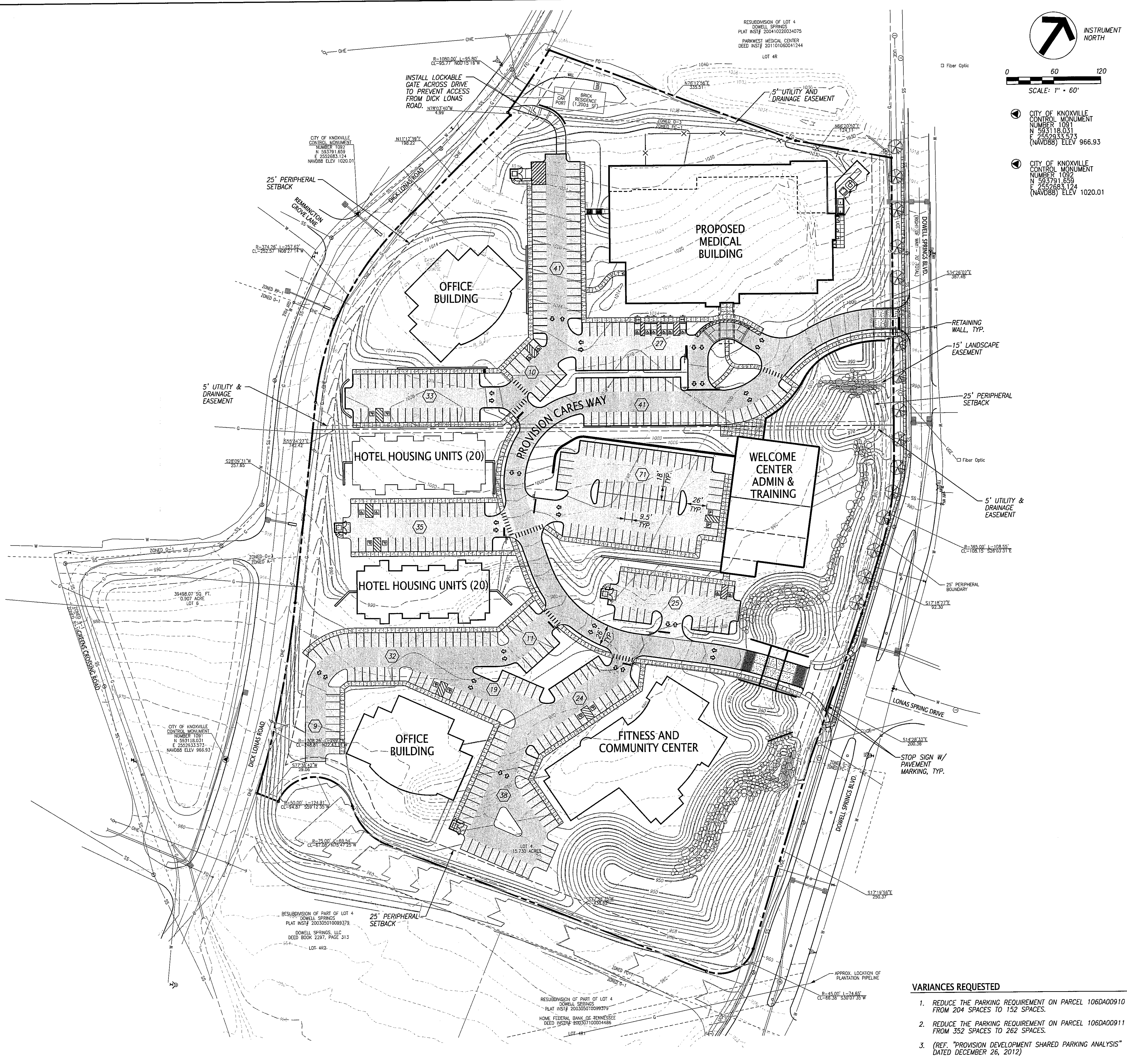


**LOCATION MAP**  
(NOT TO SCALE)



CITY OF KNOXVILLE  
CONTROL MONUMENT  
NUMBER 1091  
N 595118.031  
E 2552933.573  
(NAVD88) ELEV 966.93

CITY OF KNOXVILLE  
CONTROL MONUMENT  
NUMBER 1092  
N 593791.659  
E 2552683.124  
(NAVD88) ELEV 1020.01



**NOTES:**

- THE TOPOGRAPHIC & BOUNDARY DATA WAS TAKEN FROM BATSON, HIMES, NORVELL & POE DATED NOVEMBER 17, 2011.
- UNLESS NOTED OTHERWISE, DIMENSIONS ARE TAKEN FROM THE FENCE LINE, PROPERTY LINE, FACE OF CURB, EDGE OF PAVEMENT OR OUTSIDE FACE OF BUILDING.
- PROPERTY CONCERNED REFLECTS PARCEL 9.10 & 9.11 AS SHOWN IN KNOX COUNTY CLT MAP 106. ZONING IS PC-1 FOR THE PROPERTY, CITY BLOCK NO. 45408, WARD NO. 45. TOTAL LAND AREA = 15.73 AC. TOTAL DISTURBED AREA = 15.0± AC.
- OWNERS: PROTON THERAPY CENTER, LLC  
1450 DOWELL SPRINGS BLVD, SUITE 250  
KNOXVILLE, TN 37909  
CONTACT: MR. PETE CARPENTER  
865.321.4523  
EAST TENNESSEE HEALTH REALTY  
2095 LAKESIDE CENTRE WAY, SUITE 101  
KNOXVILLE, TN 37922  
CONTACT: MR. PETE CARPENTER  
865.321.4523
- REFER TO ARCHITECTURAL PLANS FOR ACTUAL BUILDING DIMENSIONS.
- NO TREES SHALL BE LOCATED WITHIN THE DETENTION POND BERM AREA.
- ALL DRAINAGE WILL BE CONTROLLED THROUGH THE MASTER DETENTION POND.

**PARKING SUMMARY**

<b>REQUIRED PARKING:</b>	
PROTON THERAPY (PREVIOUSLY APPROVED)	142 SPACES
STANDARD PARKING SPACES	10 SPACES
ACCESSIBLE SPACES (FOR HANDICAPPED)	
OFFICE 1 (13,000 SF)	52 SPACES
1 SPACE PER 250 SF	
OFFICE 2 (13,000 SF)	52 SPACES
1 SPACE PER 250 SF	
HOTEL HOUSING UNIT (40 TOTAL)	40 SPACES
1 SPACE PER UNIT	
FITNESS/COMMUNITY CENTER (300 MEMBERS)	100 SPACES
1 SPACE PER 3 MEMBERS	
WELCOME/ADMIN CENTER (40,000 SF)	160 SPACES
1 SPACE PER 250 SF	
<b>TOTAL REQUIRED PARKING</b>	<b>556 SPACES</b>
<b>PROVIDED PARKING:</b>	
STANDARD PARKING SPACES	392 SPACES
ACCESSIBLE SPACES (FOR HANDICAPPED)	22 SPACES
<b>TOTAL PROVIDED PARKING</b>	<b>414 SPACES</b>

**LEGEND:**

- ASPHALT PAVEMENT (LIGHT DUTY)
- ASPHALT PAVEMENT (HEAVY DUTY)
- CONCRETE PAVEMENT
- EXISTING CONTOUR
- PROPOSED CONTOUR
- PROPERTY LINE
- EXISTING UTILITY EASEMENT
- PERIPHERAL BOUNDARY SETBACK
- NUMBER OF PARKING SPACES

**VARIANCES REQUESTED**

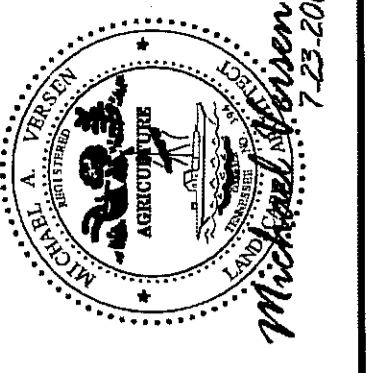
- REDUCE THE PARKING REQUIREMENT ON PARCEL 106DA00910 FROM 204 SPACES TO 152 SPACES.
- REDUCE THE PARKING REQUIREMENT ON PARCEL 106DA00911 FROM 352 SPACES TO 262 SPACES.
- (REF. "PROVISION DEVELOPMENT SHARED PARKING ANALYSIS" DATED DECEMBER 26, 2012)

2-D-12-02  
**REVISED**  
2-1-13







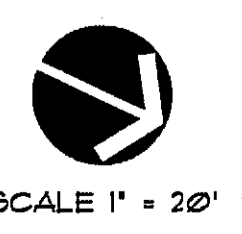


**MICHAEL VERSEN & ASSOCIATES**  
 LANDSCAPE ARCHITECTURE AND LAND PLANNING  
 299 N. WEISGARBER RD. SUITE 201 KNOXVILLE, TN 37919  
 (865) 588-1331

**Water Feature - Planting Plan**

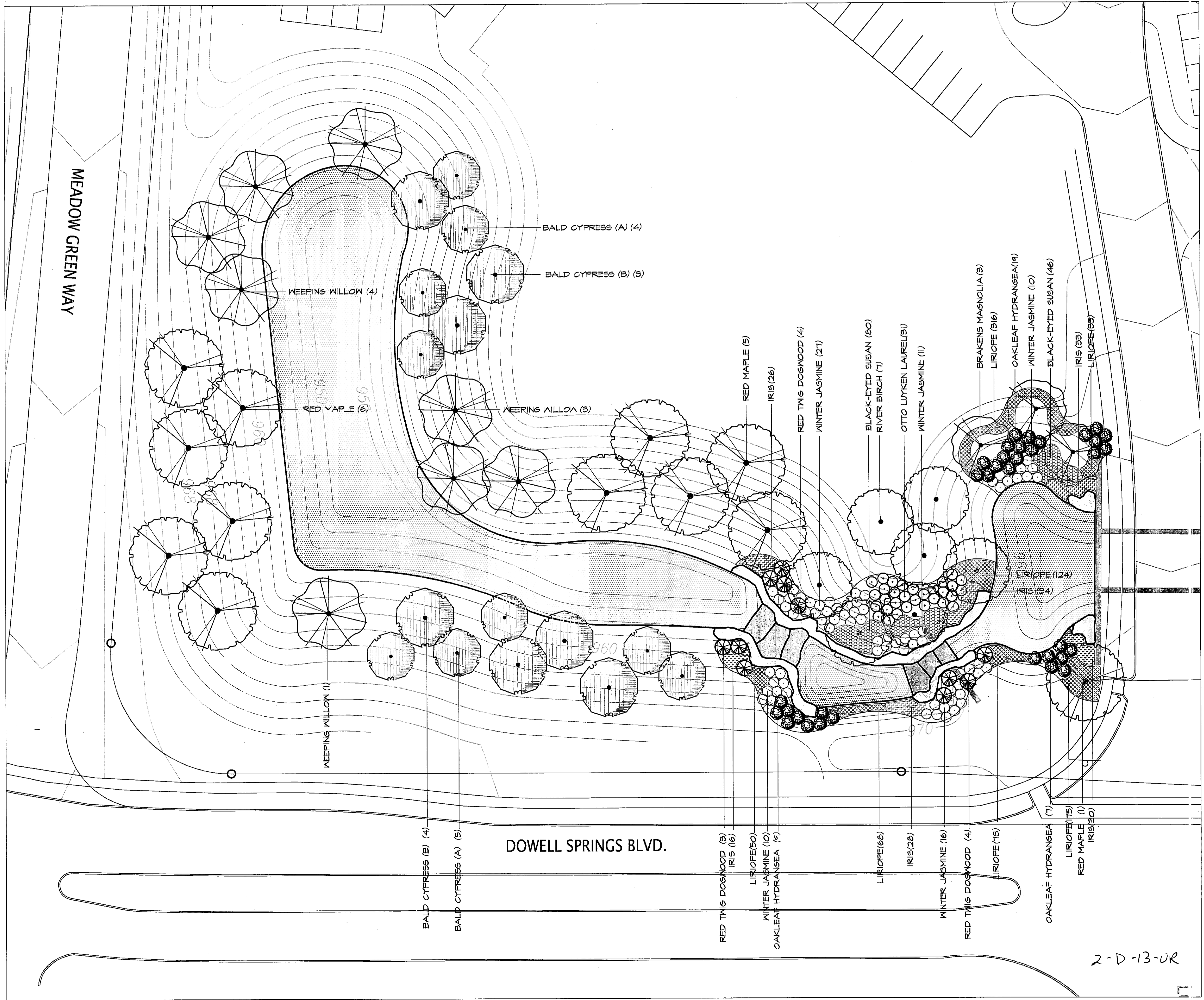
**The Proton Therapy Center**  
 Dowell Springs Knoxville, Tennessee

JOB NO. 210224  
 DRAWN: MAV/RJM  
 DATE: JULY 12, 2012  
 REVISIONS: JULY 23, 2012



SCALE 1" = 20'

**L-4**



2-D-13-UR

**PLANTING SPECIFICATIONS**

**SCOPE OF WORK**  
 PROVIDE ALL LABOR AND EQUIPMENT NECESSARY FOR A COMPLETE AND QUALITY LANDSCAPE AS PER PLANS AND SPECIFICATIONS.

**REFERENCES AND STANDARDS**  
 PERFORM ALL WORK IN ACCORDANCE WITH ALL APPLICABLE NATIONAL, STATE AND LOCAL CODES, AND ORDINANCES.

PROVIDE LICENSES AND NECESSARY PERMITS PRIOR TO BEGINNING WORK.  
 CARRY GENERAL LIABILITY AND WORKMAN'S COMPENSATIONS INSURANCE IN AMOUNTS REQUIRED BY THE STATE.  
 QUALITY OF ALL MATERIALS SHALL MEET OR EXCEED THE STANDARDS OF THE 'AMERICAN STANDARD FOR NURSERY STOCK' LATEST EDITION, AS PUBLISHED BY THE AMERICAN ASSOCIATION OF NURSESMEN.

**PROJECT CONDITIONS**  
 REVIEW AND BECOME FAMILIAR WITH SITE CONDITIONS AND CONSTRUCTION DOCUMENTS. PROTECT ALL UTILITIES AND EXISTING FACILITIES. FIELD VERIFY ROW / PROPERTY LINE WITH OWNER.  
 IF CONDITIONS DETRIMENTAL TO PLANT GROWTH AND INSTALLATION ARE ENCOUNTERED, (I.E. ADVERSE DRAINAGE CONDITIONS AND OBSTRUCTIONS) CONTACT THE LANDSCAPE ARCHITECT FOR INSTRUCTIONS.

**LAYOUT**  
 LAYOUT AND STAKE ALL SITE WORK AND PLANTINGS.  
 CONTACT LANDSCAPE ARCHITECT FOR APPROVAL PRIOR TO START OF WORK.  
 ALLOW THREE DAYS AFTER NOTIFICATION OF STAKING FOR APPROVAL.

THE LANDSCAPE ARCHITECT RESERVES THE RIGHT TO ADJUST PLANTINGS, LOCATIONS, ETC. TO ACCOMMODATE LOCAL CONDITIONS. SUCH ADJUSTMENTS, IF MADE, WILL BE DEEMED CLARIFICATIONS AND NOT CHANGE ORDERS.

EROSION CONTROL AND SITE CLEANUP  
 PROVIDE EROSION CONTROL AS NECESSARY. MAINTAIN SITE CLEANUP THROUGHOUT WORK AND PROVIDE A FINAL JOB CLEANUP.

**TREES SHRUBS AND GROUNDCOVERS**

**PLANT MATERIAL**  
 NURSERY GROWN, SOUND, HEALTHY AND VIGOROUS, WELL BRANCHED AND DENSELY FOLIATED WHEN IN LEAF AND HAVE HEALTHY, WELL DEVELOPED ROOT SYSTEM.  
 GROWN UNDER CULTIVATION CONDITIONS SIMILAR TO THOSE IN LOCALITY OF PROJECT (PREFERABLY WITHIN A 200-MILE RADIUS OF THE PROJECT SITE).  
 PLANTS MUST BE EQUAL OR EXCEED THE MEASUREMENTS DENOTED IN THE PLANT LIST, WHICH ARE MINIMUM ACCEPTABLE SIZES.  
 PRUNE ONLY AS DIRECTED BY LANDSCAPE ARCHITECT. IN NO CASE SHOULD THE PLANTS BE PRUNED BACK TO AN EXTENT THAT THEY NO LONGER MEET THE SPECIFICATIONS.

**SUBMITTALS**  
 PROVIDE VERIFICATION OF PLANT INSPECTION CERTIFICATES, GENUS, SPECIES AND VARIETY, PROPOSED SCHEDULE OF WORK, SOIL TEST RESULTS, PROPOSED RATES OF APPLICATION OF FERTILIZERS AND SOIL CONDITIONERS PRIOR TO INSTALLATION.

**PLANT INSPECTION**  
 THE LANDSCAPE ARCHITECT MAY INSPECT PLANT MATERIALS EITHER AT THE PLACE OF GROWTH OR AT THE SITE BEFORE PLANTING. DEFECTIVE OR UNSATISFACTORY MATERIAL MAY BE REJECTED AT ANY TIME DURING PROGRESS OF WORK.

**SOIL AMENDMENTS**  
 FERTILIZER, COMMERCIAL GRADE, 10-6-4 FORMULA CONFORMING TO U.S. DEPARTMENT OF AGRICULTURAL STANDARDS DELIVERED IN ORIGINAL UNOPENED CONTAINERS BEARING MANUFACTURER'S GUARANTEED ANALYSIS AND MIXTURE.

**TOPSOIL**  
 1. FERTILE, FRIABLE, NATURAL LOAM, TYPICAL FOR LOCALITY.  
 2. AGRICULTURAL SOIL, CAPABLE OF SUSTAINING VIGOROUS PLANT GROWTH.  
 3. TAKEN FROM WELL-DRAINED SITE.  
 4. FREE OF SUBSOIL, CLAY LUMPS OR STONES LARGER THAN ONE INCH IN DIAMETER.  
 5. PLANTS WEEDS, AND ROOTS.  
 6. HAVING PH VALUE OF 5.4 MINIMUM AND 7.0 MAXIMUM.  
 7. CONTAINING 3 PERCENT MINIMUM ORGANIC MATTER.

**MULCHES**  
 MULCHES SHALL BE FREE FROM MATURED SEED, NOXIOUS WEEDS, EGG CASES, HARMFUL INSECTS, OR ANY SPECIES OR CHEMICAL DETRIMENTAL TO THE DEVELOPMENT OF PLANTS AND HERBALS. CONTRACTOR SHALL ASSUME FULL RESPONSIBILITY FOR CONTROL OF NOXIOUS WEEDS INTRODUCED ON THE SITE IN THE MULCH FOR PERIOD OF ONE YEAR AFTER SUBSTANTIAL COMPLETION OF THE WORK. MULCHES SHALL EXHIBIT UNIFORM TEXTURE COLOR AND PARTICLE SIZE. SECURE LANDSCAPE ARCHITECT'S APPROVAL FOR SPECIFIC MULCH TYPE.

**PROTECTION**  
 PROTECT WORK FROM EROSION, FLOODING, WINDS AND RAIN. REPAIR OR REPLACE ANY DAMAGED AREAS.

**PLANTING SOIL MIX**  
 3 PARTS TOPSOIL (LOAM) AND 2 PARTS SAND (USE WITH CLAY LOAMS OR SILTY LOAMS)  
 NOTE: PLANTING SOIL MIX MAY BE SUBSTITUTED WITH APPROVED TOPSOIL.  
 FERTILIZE AS PER MANUFACTURER'S SPECIFICATIONS.

**PREPARED PLANTING BED AREAS (ANNUALS & GROUNDCOVERS)**  
 1. TILL SOIL TO A DEPTH OF 12".  
 2. ADD MINIMUM 4" TOPSOIL AND 1" PEAT.  
 3. EVENLY TILL TO DEPTH OF 6".  
 4. RAKE TO LEVEL GRADE THEN ADD 2" FINE BARK MULCH PRIOR TO PLANTING.

**PLANTING**  
 REMOVE BURLAP AND TIES FROM TOP AND PARTIAL SIDES OF ALL PLANT BALLS.  
 PLANT ALL TREES, SHRUBS AND GROUND COVERS AS PER PLANTING DETAILS.  
 ROOTS OF GROUNDCOVER TO BE PLANTED IN SOIL NOT MULCH TOP DRESSING.

**MAINTENANCE**  
 MAINTAIN PLANTINGS (WATERING, WEEDING, FERTILIZING, CULTIVATION, DISEASE AND INSECT CONTROL, STAKING, ETC.) UNTIL FINAL INSPECTION AND ACCEPTANCE.  
 SUBMIT WRITTEN MAINTENANCE INSTRUCTIONS TO LANDSCAPE ARCHITECT.

**INSPECTION AND ACCEPTANCE**  
 UPON COMPLETION OF PLANTING, REQUEST AN INSPECTION FOR PROJECT ACCEPTANCE. ONLY PLANTING SHOWING SIGNS OF HEALTHY GROWTH AND SATISFACTORY CONDITION OF FOLIAGE WILL BE ACCEPTED. MAINTAIN THE PROJECT UNTIL ALL INSPECTION PUNCH LIST ITEMS (EXCLUSIVE OF SEASON REPLACEMENT PLANTING) HAVE BEEN CORRECTED TO THE SATISFACTORY OF THE LANDSCAPE ARCHITECT.

**GUARANTEE AND REPLACEMENT**  
 GUARANTEE ALL PLANT MATERIAL FOR A PERIOD OF ONE YEAR AFTER DATE OF PROJECT ACCEPTANCE. GUARANTEE AGAINST DEFECTS, INCLUDING DEATH AND UNSATISFACTORY GROWTH, EXCEPT FOR DEFECTS RESULTING FROM NEGLIGENCE BY OWNER, ABUSE OR DAMAGE BY OTHERS, OR UNUSUAL PHENOMENA OR INCIDENTS WHICH ARE BEYOND CONTRACTOR'S CONTROL. IMMEDIATELY REMOVE AND REPLACE TREES, SHRUBS, OR OTHER PLANTS FOUND TO BE UNSATISFACTORY DURING GUARANTEE PERIOD.

**SOIL**  
 CONTRACTOR SHALL BE RESPONSIBLE TO VERIFY EXISTING SOIL CONDITION FOR DRAINAGE AND NUTRIENT CONTENT. REPORT ANY PROBLEMS TO LANDSCAPE ARCHITECT PRIOR TO BEGINNING PLANT INSTALLATION.

**LAWNS AND GRASSES**  
**QUALITY ASSURANCE**  
 PROVIDE FRESH, CLEAN, NEW-CROP SEED COMPLYING WITH TOLERANCE FOR PURITY AND GERMINATION ESTABLISHED BY OFFICIAL SEED ANALYSTS OF NORTH AMERICA. SUBMIT SEED VENDOR'S CERTIFIED STATEMENT FOR EACH GRASS SEED MIXTURE.

**PROJECT CONDITIONS**  
 PROCEED WITH AND COMPLETE LAWNS AND GRASSES AS RAPIDLY AS PORTIONS OF SITE BECOME AVAILABLE, WORKING WITHIN SEASONAL LIMITATIONS.

**FERTILIZER AND LIME**  
 FERTILIZER WITH COMMERCIAL FERTILIZER. PERCENTAGE TO BE DETERMINED WITH ANALYSIS AND SEASON OF INSTALLATION.  
 LIME TO BE NATURAL DOLOMITIC LIMESTONE CONTAINING NOT LESS THAN 85% CARBONATES.  
 MINIMUM OF 30% MAGNESIUM CARBONATES.

**SEED**  
 SEED MIXTURE AND RATE OF APPLICATION SHALL BE AS SPECIFIED IN MATERIAL LIST.

**SEED AND SOIL PREPARATION**  
 1. TILL TO A DEPTH OF NOT LESS THAN 6".  
 2. ELIMINATE UNEVEN AREAS AND LOW SPOTS. MAKE CHANGES IN GRADE GRADUAL.  
 3. TILL SOIL TO A HOMOGENEOUS MIXTURE OF FINE TEXTURE, FREE OF CLODS.  
 4. REMOVE STONES LARGER THAN ONE INCH AND OTHER EXTRANEIOUS MATERIAL.  
 5. APPLY TOPSOIL LAYER IF SPECIFIED.  
 6. APPLY LIME AT RATE REQUIRED TO ACHIEVE PH RANGE BETWEEN 6.0 AND 6.5.  
 7. APPLY FERTILIZER AT RATE REQUIRED BY ANALYSIS.  
 8. MIX THOROUGHLY IN UPPER TWO INCHES OF TOPSOIL.

**SEEDING AND MULCHING**  
 APPLY SEED AT RATE SPECIFIED OR AS NECESSARY TO INSURE A UNIFORM AND FULL STAND OF GRASS, EVENLY, BY SOWING EQUAL QUANTITY IN 2 DIRECTIONS AT RIGHT ANGLES TO EACH OTHER.  
 RAKE SEED LIGHTLY INTO TOP 1/4" OF SOIL AND ROLL SEEDS AREA WITH ROLLER NOT EXCEEDING 10 LBS.  
 IMMEDIATELY FOLLOWING ROLLING, APPLY MULCH SPREAD UNIFORMLY TO FORM A CONTINUOUS BLANKET NOT LESS THAN 1-1/2" LOOSE MEASURE. MAINTAIN CLEAR OF TREES AND SHRUBS.  
 ON SEEDED SLOPES, WHERE GRADE IS 2:1 OR GREATER, COVER WITH EROSION FABRIC.

**RODDING**  
 LAY SOIL TIGHT WITH NO OPEN JOINTS AND NOT OVERLAPPING. TAMP OR ROLL LIGHTLY TO ENSURE CONTACT WITH SUBGRADE.  
 ON SLOPES 2:1 OR GREATER, INSTALL SOIL STAPLES.

**LAWN MAINTENANCE**  
 MAINTAIN LAWNS UNTIL GRASS IS WELL ESTABLISHED AND EXHIBITS A VIGOROUS GROWING CONDITION.  
 IF SEEDING IN FALL AND IF NOT CONSIDERED ACCEPTABLE AT THAT TIME, CONTINUE MAINTENANCE THE FOLLOWING SPRING UNTIL ACCEPTABLE LAWN IS ESTABLISHED.  
 MAINTAIN LAWNS BY WATERING, FERTILIZING, WEEDING, TRIMMING, AND OTHER OPERATIONS SUCH AS ROLLING, RE-GRADEING, AND REPLANTING AS REQUIRED TO ESTABLISH A SMOOTH, ACCEPTABLE, LAWN FREE OF ERODED OR BARE AREAS.

**PLANTING SCHEDULE**

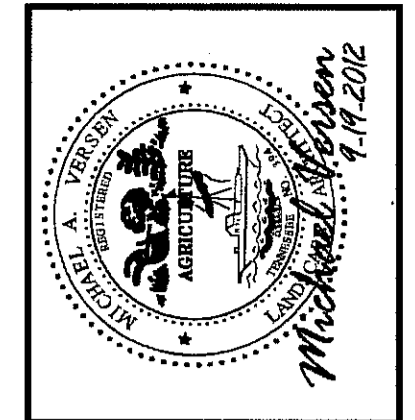
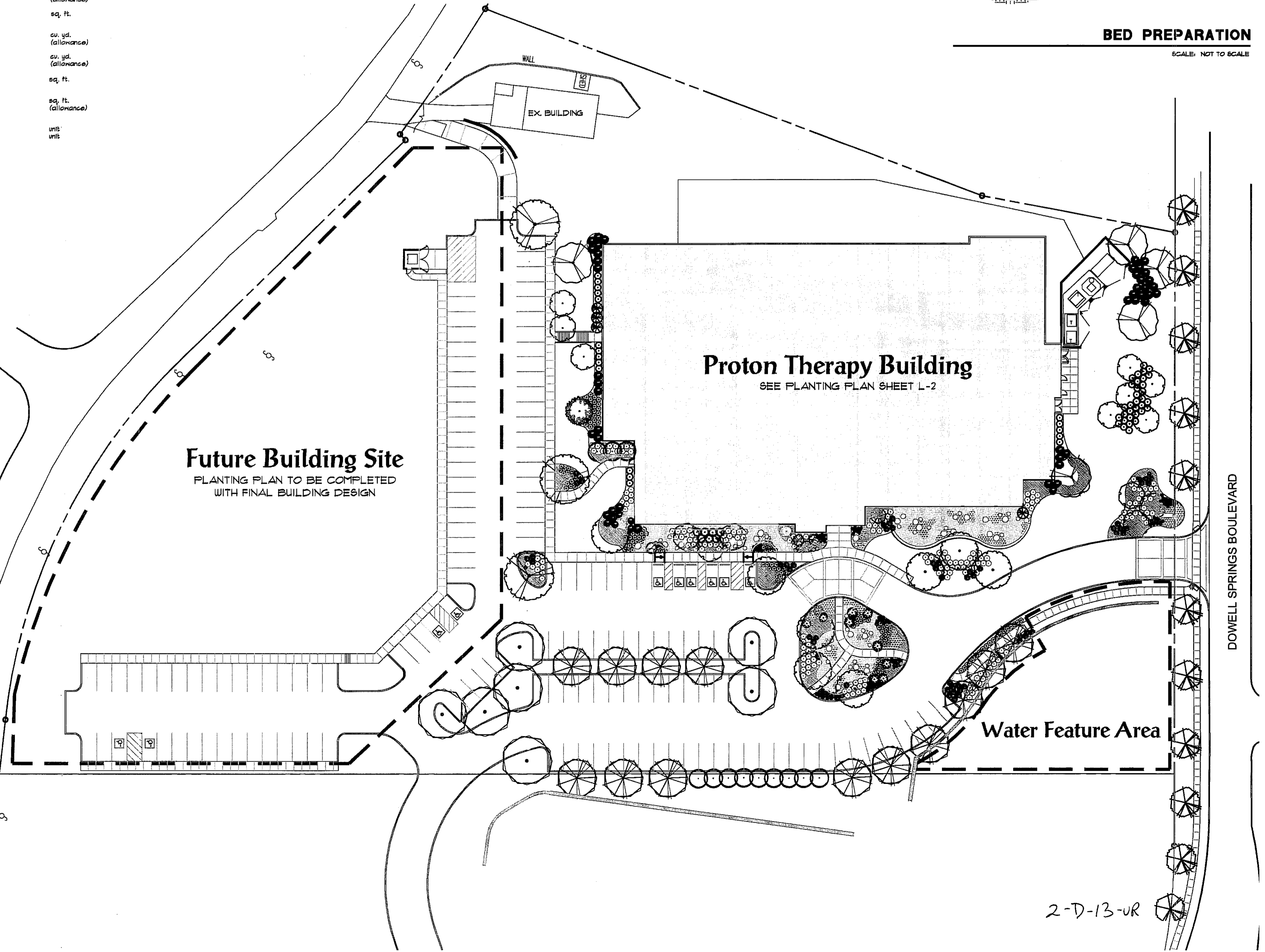
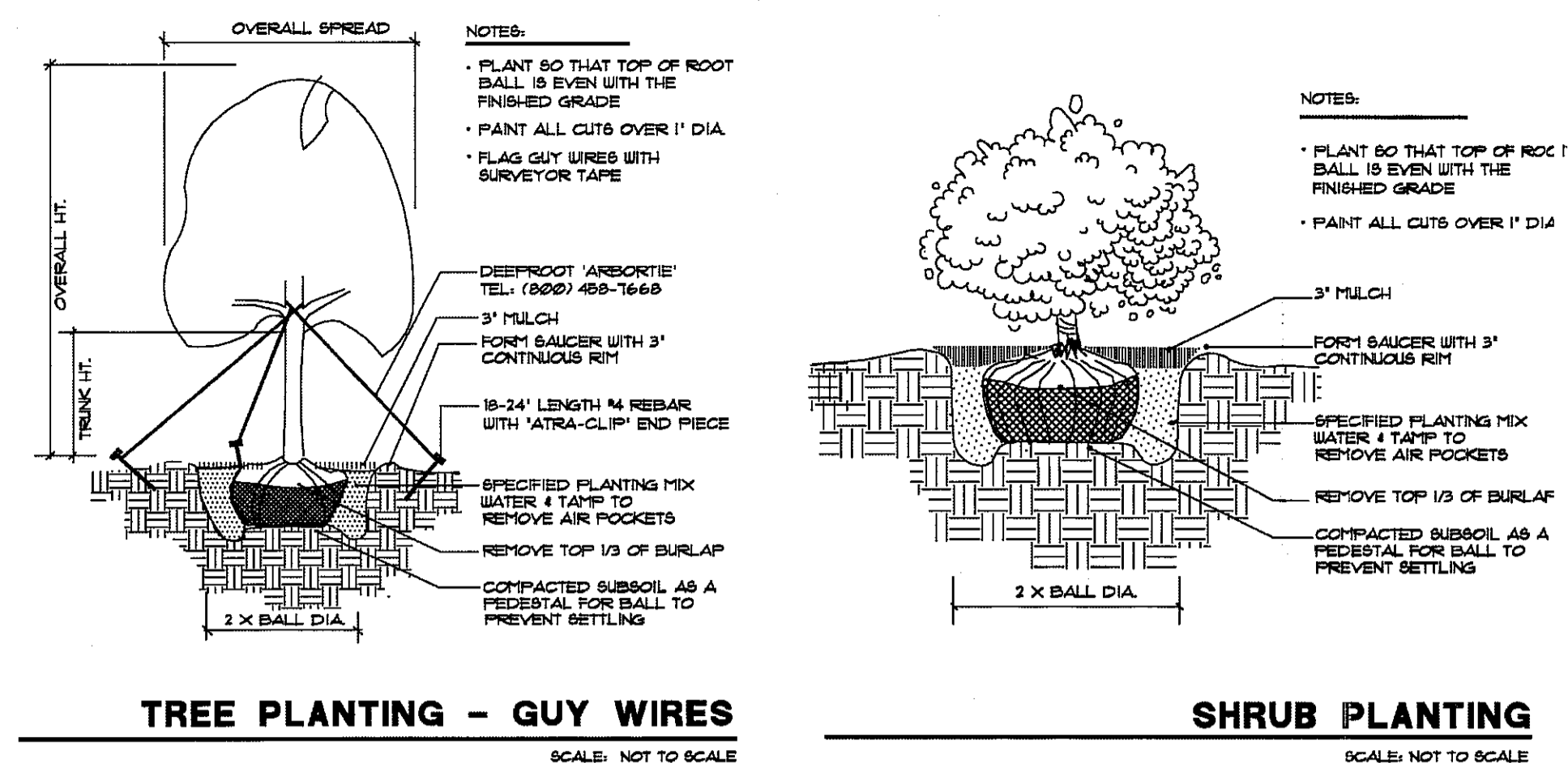
QUANTITY	COMMON NAME / BOTANICAL NAME	SIZE	GAL.	CONT.
15	GREEN VASE ZELKOVA / Zelkova serrata 'Green Vase'	12-15H	3'Gal	B4B
4	HAWTHORN / Crataegus viridis 'Winter King'	8-10H	2'Gal	B4B
13	RED MAPLE / Acer rubrum 'October Glory' TM	12-15H	3'Gal	B4B
8	RIVER BIRCH / Betula nigra 'Dura Head' Multi-Trunk	12-15H	2'Gal	B4B
7	WILLOW OAK / Quercus phellos	14-16H	4'Gal	B4B
5	BRACKEN MAGNOLIA / Magnolia grandiflora 'Brackens'	12-14H X 6-8SP	4'Gal	B4B
1	CAROLINA SAPPHIRE CYPRESS / Cupressus arizonica 'Carolina Sapphire'	8H	B4B	B4B
1	FOSTER HOLLY / Ilex attenuata 'Foster's'	8-10H	B4B	B4B
1	SWEET BAY / Magnolia virginiana	8-10H	B4B	B4B
1	COMMON NAME / BOTANICAL NAME	SIZE <td>GAL. <td>CONT. </td></td>	GAL. <td>CONT. </td>	CONT.
12	GRAPE HYDRILE / Lagerstroemia indica 'Noblesse'	8H	1 gal	multi trunk B4B
2	COMMON NAME / BOTANICAL NAME	SIZE <td>GAL. <td>CONT. </td></td>	GAL. <td>CONT. </td>	CONT.
2	ANTHUR TERN / Dytiscidae erythrocarus	10-12H	1 gal	
8	LENTON ROSE / Helleborus orientalis	2 gal		
1	COMMON NAME / BOTANICAL NAME	SIZE <td>GAL. <td>CONT. </td></td>	GAL. <td>CONT. </td>	CONT.
1	AN. SP. / Symplocos x barnebyi 'Anthony Waterer'	18-24H	3 gal	
11	DIASECTUM MAPLE / Acer palmatum 'Diasectum' Red	8H x 96" W	B4B	
7	HYDRANGEA / Hydrangea macrophylla 'Endless Summer'	18-24H	3 gal	
44	OAKLEAF HYDRANGEA / Hydrangea oerfolata	24-30H	B4B	
4	STAR MAGNOLIA / Magnolia stellata	5-6H	B4B	
1	COMMON NAME / BOTANICAL NAME	SIZE <td>GAL. <td>CONT. </td></td>	GAL. <td>CONT. </td>	CONT.
1	CAROLINA HOLLY / Ilex carolina 'Scarlet'	12-15H	3 gal	
146	INDIAN HAWTHORN / Rhaphiopholis indica 'Indian Princess'	12-15H	3 gal	
91	OTTO LYKEN LAUREL / Prunus laurocerasus 'Otto Lyken'	18-24H	B4B	
84	PLUM YEM / Cephalotoxos harringtonia 'Prostrata'	12-15H	3 gal	
4	FRAGILE VIBURNUM / Viburnum var. 'Fragile'	36" H	B4B	
1	COMMON NAME / BOTANICAL NAME	SIZE <td>GAL. <td>CONT. </td></td>	GAL. <td>CONT. </td>	CONT.
1	DWARF FOUNTAIN GRASS / Pennisetum alopecuroides 'Hainii'	10-12H	1 gal	
1	COMMON NAME / BOTANICAL NAME	CONT. <td></td> <td></td>		
1	LIRIOPE / Liriope muscari 'Big Blue'	4' pots 12" oc		
1	MONDO GRASS / Ophiopogon japonicus	4' pots 12" oc		
1	PERENNIAL MASS / FLORAL	1 gal 18" oc		
1	Coreopsis/Sedum 40%, Iris/Dianthus 30%, Dnt. Fountain Grass 30%			
1	ADDITIONAL ITEMS	DESCRIPTION		
110	HARDWOOD MULCH trees and shrubs	cu. yd. (alliance)		
8200	BED PREPARATION grass and groundcover	sq. ft.		
80	FINE BARK MULCH annuals and groundcover	cu. yd. (alliance)		
80	TOP SOIL - PLANTING BEDS (4' all planting areas)	cu. yd. (alliance)		
48000	SEED (Proton Building Site) tall fescue blend	sq. ft.		
2800	ROCK MULCH as per specification	sq. ft. (alliance)		
AS PER PLAN	BOULDERS A - 4'x3'x3' and 3'x4'x2' B - 2'x3'x2' and 2'x2'x2'	unit		

QUANTITIES ARE FOR THE CONTRACTORS CONVENIENCE ONLY. CONTRACTORS SHALL BE RESPONSIBLE FOR ALL PLANTINGS ILLUSTRATED ON PLAN.

**CITY OF KNOXVILLE LANDSCAPE REQUIREMENTS**

ITEM	REQUIRED	PROPOSED
REQUIRED TREES SITE AREA 6.32 AC	49 TREES	53 TREES

SEC. 14-31 (KNOXVILLE CODE) MAINTENANCE AND REPLACEMENT OF TREES  
 ALL TREES RETAINED OR PROVIDED TO MEET THE REQUIREMENTS OF THIS ARTICLE SHALL BE PROPERLY MAINTAINED TO ENSURE THEIR SURVIVAL FOR A PERIOD OF AT LEAST EIGHTEEN (18) MONTHS FROM THE DATE OF COMPLETE CONSTRUCTION. FINAL PLANT APPROVAL OR PLANTING. ANY TREE WHICH FAILS TO SURVIVE EIGHTEEN (18) MONTHS SHALL BE REPLACED WITHIN (12) MONTHS OF LOSS.



**MICHAEL VERSEN & ASSOCIATES**  
 LANDSCAPE ARCHITECTURE AND LAND PLANNING  
 295 N. WELLSBARGER RD., SUITE 201 KNOXVILLE, TN. 37919  
 (615) 598-1331

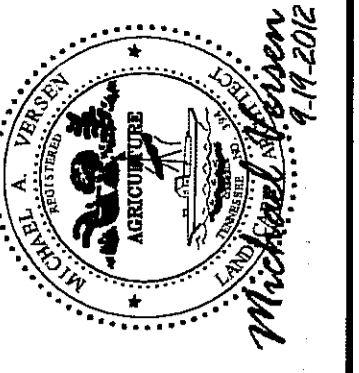
**Planting Plan**  
**Proton Therapy Building**  
 Dowell Springs Knoxville, Tennessee

JOB NO.	2110250
DRAWN	MAV/RJM
DATE	DEC. 29, 2011
REVISIONS	MAR. 1, 2012
	OCT. 11, 2012

SCALE 1" = 40'

**L-5**

2-D-13-UR

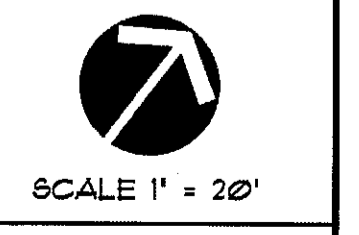


**MICHAEL VERSEN & ASSOCIATES**  
 LANDSCAPE ARCHITECTURE AND LAND PLANNING  
 293 N. WEIGANDER RD., SUITE 201, KNOXVILLE, TN, 37919  
 (865) 588-1331

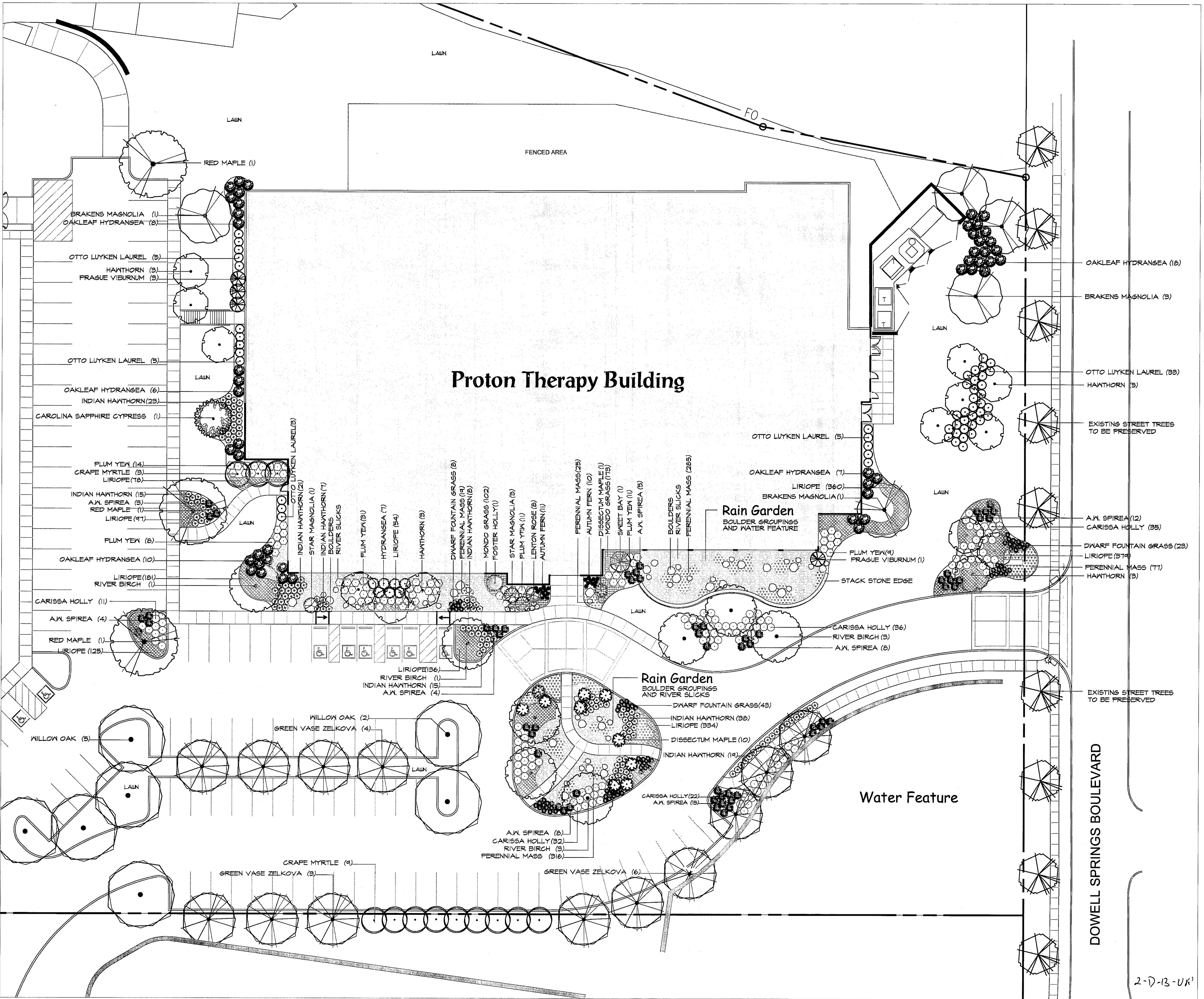
**Planting Plan**

**Proton Therapy Building**  
 Dowell Springs Knoxville, Tennessee

JOB NO.	211250
DRAWN	MAV/RJM
DATE	DEC. 29, 2011
REVISIONS	MAR. 1, 2012
	OCT. 17, 2012



**L-6**



**Proton Therapy Building**

**Rain Garden**  
 BOULDER GROUPINGS  
 AND WATER FEATURE

**Rain Garden**  
 BOULDER GROUPINGS  
 AND RIVER SLICKS

**Water Feature**

DOWELL SPRINGS BOULEVARD

2-D-13-UK