

 THIS SIGN IS INTENDED TO BE INSTALLED IN ACCORDANCE WITH ARTICLE 600 OF THE NATIONAL ELECTRICAL CODE AND/OR OTHER APPLICABLE LOCAL CODES. THIS INCLUDES PROPER GROUNDING AND BONDING OF SIGN. SIGN WILL BEAR UL LABEL(S).



FABRICATED ALUMINUM TOPPER  
PAINTED PMS WHITE  
ROPT COPY w/1st SURFACE BLACK VINYL  
INTERNALLY ILLUMINATED w/ GE TETRAMAX WHITE LED's

GE BLUE CONTOUR LED STRIP  
OUTLINING CABINET AS SHOWN

CABINET TO BE FABRICATED ALUMINUM  
PAINTED PMS REFLEX BLUE w/ ROUT-OUT FACES

3/4" THICK CLEAR ACRYLIC (1/2" PROJECTION)  
PUSH-THRU GRAPHICS COPY TO HAVE 3M 3630-20  
WHITE VINYL OVERLAYS STRIPE TO HAVE 3M 3630-015  
YELLOW VINYL OVERLAYS -2nd SURFACE DIFFUSER

INTERNALLY ILLUMINATED w/ GE TETRAMAX POWERSTRIP  
WHITE LED's

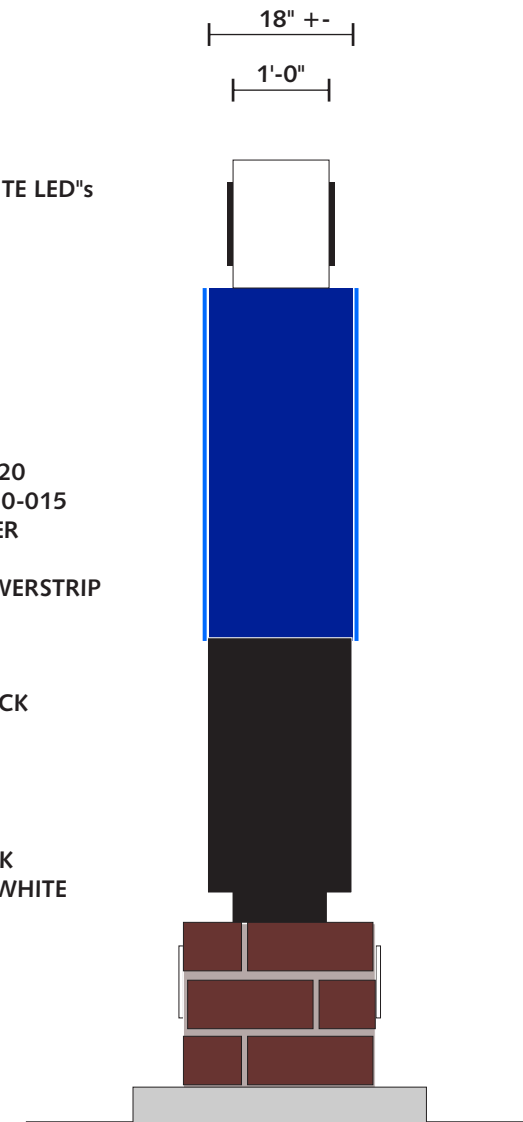
FABRICATED ALUMINUM CABINET - PAINTED BLACK  
FUTURE TENANT GRAPHICS TO BE DETERMINED

GE LED POWER SUPPLIES IN CABINET

BRICK BASE ( EXACT SPEC T.B.D. ) WITH 3/8" THICK  
ALUMINUM FLAT CUT OUT NUMERALS PAINTED WHITE  
& STUD MOUNTED FLUSH TO BRICK

**NOTE: 10' SETBACK REQUIRED BEHIND R.O.W.  
OR 15' FROM EDGE OF PAVEMENT**

**480 V ELECTRICAL SERVICE**



**END VIEW**



## D/F MONUMENT SIGN

MFG. & INSTALL ONE (1) DOUBLE FACE MONUMENT SIGN

SCALE: 1/2"= 1'-0"

**TOTAL SIGN AREA SQ. FT. = 100**

**MAIN EVENT CABINET 65 SQ FT  
SECONDARY TENANTS 35 SQ FT**

2-J-17-UR

Revised: 1/19/2017

## MAIN EVENT ENTERTAINMENT

Work Order #

0390812Ar10

Sheet 13 of 15

Client

MAIN EVENT

Address

9049 KINGSTON PIKE  
KNOXVILLE, TN

Account  
Rep. M. WILSON/MW

Designer JP

Date 7.25.16

Approval / Date

Client	
Sales	
Estimating	
Art	
Engineering	
Landlord	

Revision / Date

R1	CR 7/28/16
R2	KMc 7/28/16
R3	RFF 08.09.16 update elevnts
R4	ES 8/11 pg1 sqft chart
R5	JP/8.17.16/revised A,B,C & K
R6	KMc 9/20/16: rev sq ft
R7	RMS 10-11-16 Add options
R8	RFF 10.19.16 update
R9	RG 11/29/16: update
R10	ES 1/18/17 monmentTopprs
	delKopt1,delLopt1&3

**Chandler Signs**  
Brand Image Begins Here™

chandlersigns.com

**National Headquarters** 3201 Manor Way  
Dallas, TX 75235  
214-902-2000 Fax 214-902-2044

**San Antonio** 17319 San Pedro Ave, Ste. #200  
San Antonio, TX 78232  
210-349-3804 Fax 210-349-8724

**West Coast** 3220 Executive Ridge Dr., Suite 250  
Vista, CA 92081  
760-734-1708 Fax 760-734-3752

**Northeast US** 965 Baxter Avenue, Suite 200  
Louisville, KY 40204  
502-479-3075 Fax 502-412-0013

**Florida** 2584 Sand Hill Point Circle  
Davenport, FL 33837  
863-420-1100 Fax 863-424-1160

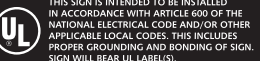
**Georgia** 37 Waterfront Part Court  
Dawsonville, GA 30534  
678-725-8852 Fax 210-349-8724

**South Texas** P.O. Box 125, 206 Doral Drive  
Portland, TX 78374  
361-583-5599 Fax 361-643-6533

This drawing is the property of  
Chandler Signs, L.P., L.L.P.  
All rights to its use for reproduction are  
reserved by Chandler Signs, L.P., L.L.P.

**FINAL ELECTRICAL  
CONNECTION BY  
CUSTOMER**

THIS SIGN IS INTENDED TO BE INSTALLED  
IN ACCORDANCE WITH ARTICLE 600 OF THE  
NATIONAL ELECTRICAL CODE AND/OR OTHER  
APPLICABLE LOCAL CODES. THIS INCLUDES  
PROPER GROUNDING AND BONDING OF SIGN.  
SIGN WILL BEAR UL LABEL(S).



Work Order #

0390812Ar10

Sheet 15 of 15

Client

MAIN EVENT

Address

9049 KINGSTON PIKE  
KNOXVILLE, TN

Account Rep. M. WILSON/MW

Designer JP

Date 7.25.16

Approval / Date

Client	
Sales	
Estimating	
Art	
Engineering	
Landlord	

Revision / Date

R1 CR 7/28/16
R2 KMc 7/28/16
R3 RFF 08.09.16 update elevnts
R4 ES 8/11 pg1 sqft chart
R5 JP/8.17.16/revise A,B,C & K
R6 KMc 9/20/16: rev sq ft
R7 RMS 10-11-16 Add options
R8 RFF 10.19.16 update
R9 RG 11/29/16: update
R10 ES 1/18/17 monumentTopprr delKopt1,dellOpt1&3

Chandler Signs  
Brand Image Begins Here™

chandlersigns.com

National Headquarters 3201 Manor Way  
Dallas, TX 75235  
214-902-2000 Fax 214-902-2044

San Antonio 17319 San Pedro Ave, Ste. #200  
San Antonio, TX 78232  
210-349-3804 Fax 210-349-8724

West Coast 3220 Executive Ridge Dr., Suite 250  
Vista, CA 92081  
760-734-1708 Fax 760-734-3752

Northeast US 965 Baxter Avenue, Suite 200  
Louisville, KY 40204  
502-479-3075 Fax 502-412-0013

Florida 2584 Sand Hill Point Circle  
Davenport, FL 33837  
863-420-1100 Fax 863-424-1160

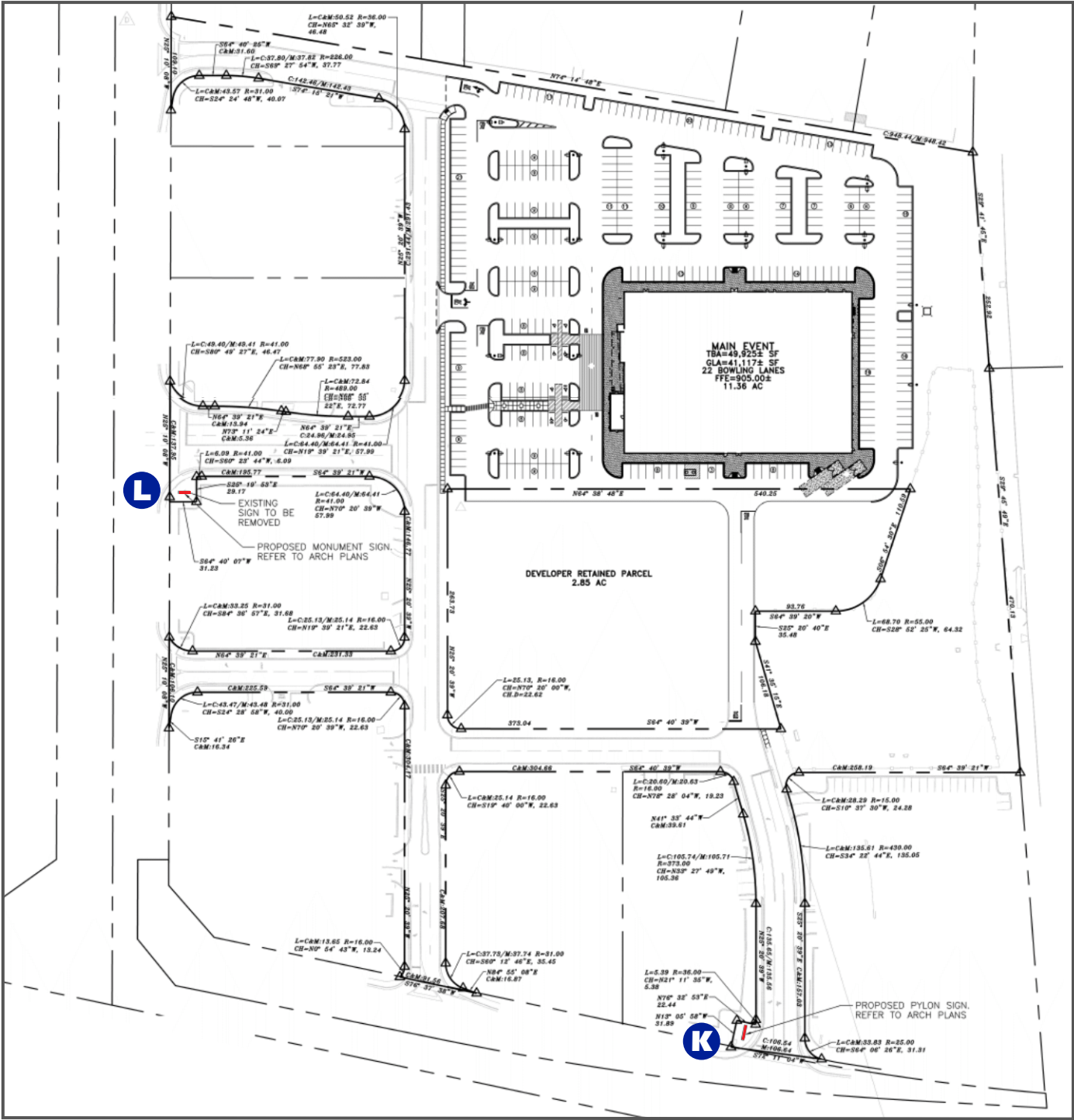
Georgia 37 Waterfront Part Court  
Dawsonville, GA 30534  
678-725-8852 Fax 210-349-8724

South Texas P.O. Box 125, 206 Doral Drive  
Portland, TX 78374  
361-563-5599 Fax 361-643-6533

This drawing is the property of  
Chandler Signs, L.P., L.L.P.  
All rights to its use for reproduction are  
reserved by Chandler Signs, L.P., L.L.P.

FINAL ELECTRICAL  
CONNECTION BY  
CUSTOMER

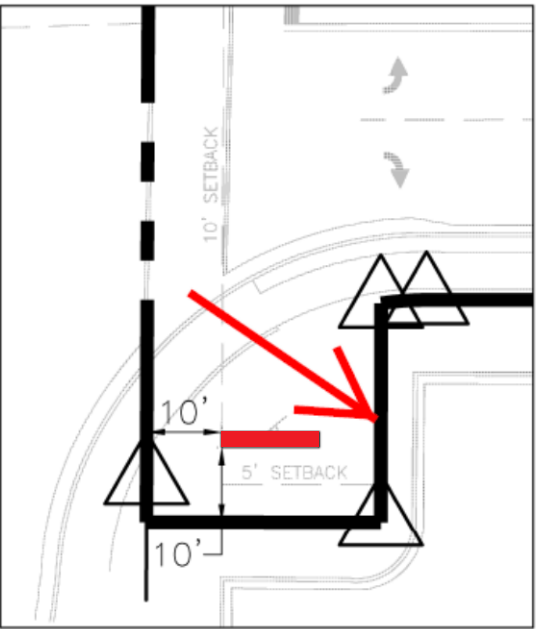
THIS SIGN IS INTENDED TO BE INSTALLED  
IN ACCORDANCE WITH ARTICLE 600 OF THE  
NATIONAL ELECTRICAL CODE AND/OR OTHER  
APPLICABLE LOCAL CODES. THIS INCLUDES  
PROPER GROUNDING AND BONDING OF SIGN.  
SIGN WILL BEAR UL LABEL(S).



SITE PLAN - SHOWING PYLON & MONUMENT LOCATIONS

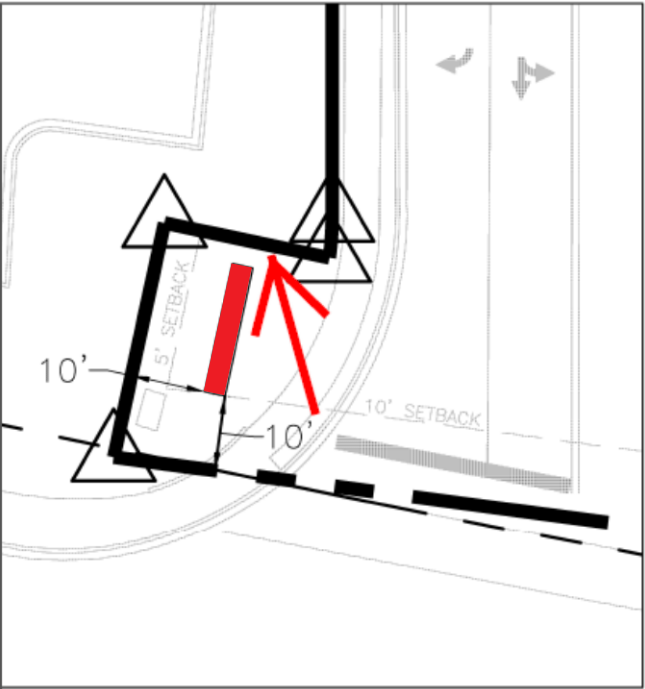
N.T.S.

NOTE: 10 SETBACK FROM R.O.W.



MONUMENT - CLOSE VIEW

N.T.S.



PYLON - CLOSE VIEW

N.T.S.

2-J-17-UR  
Revised: 1/19/2017