

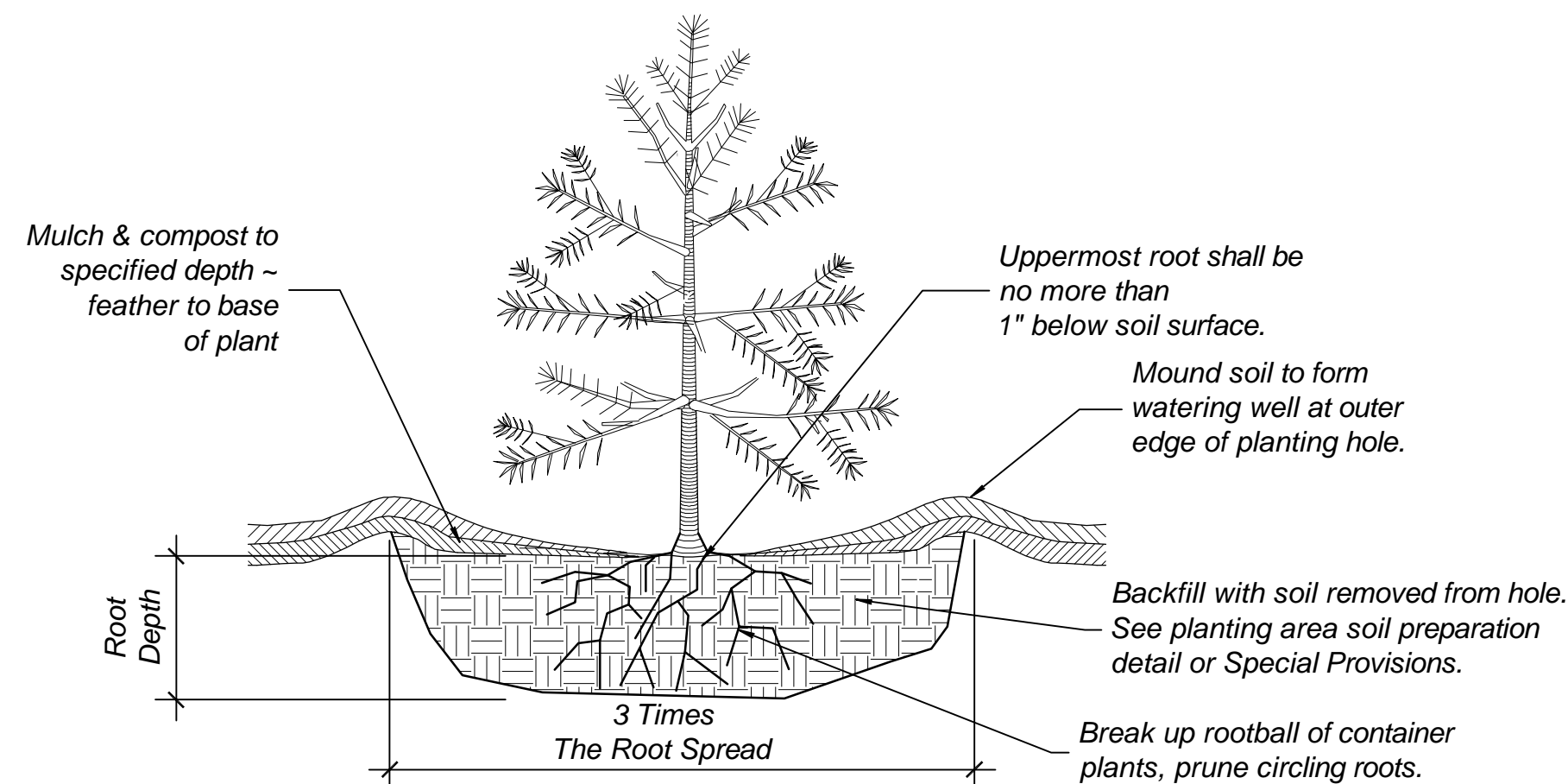
(This detail applies to container, ball and burlapped (B&B), deciduous and conifers.)

Tree Planting and Staking Detail

2
L-1.0

SCALE: N.T.S.

(APPLIES TO CONTAINER, BALL AND BURLAPPED, (B&B) DECIDUOUS AND CONIFERS)



Shrub, Tree and Ground Cover Planting Detail

3
L-1.0

SCALE: N.T.S.

NOTE

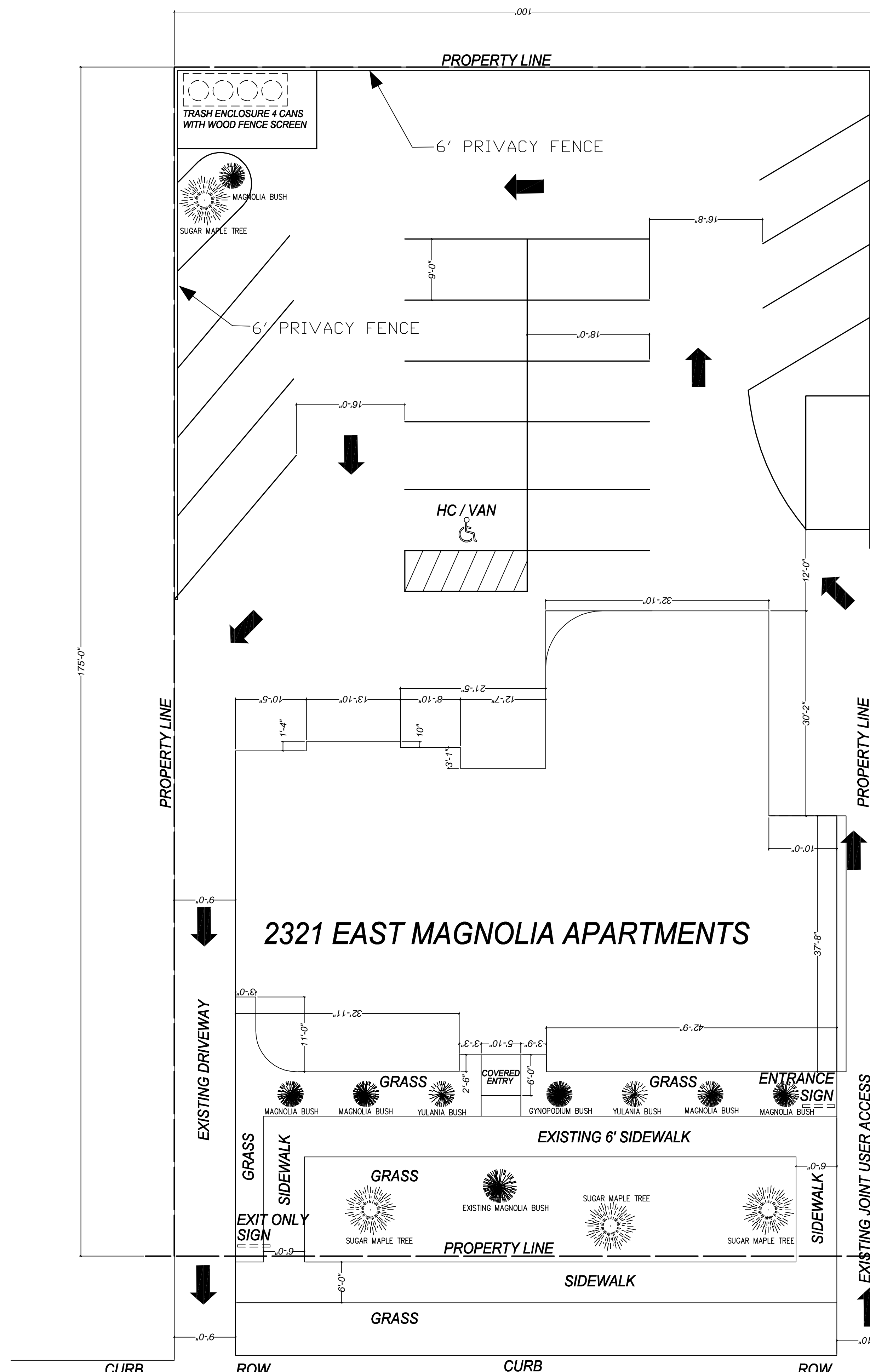
Use 2" calipers on all spices of trees / bushes.

PLANTING INVENTORY	
TREE TYPE	AMOUNT
MAGNOLIA BUSH	6
YULANIA BUSH	2
GYNOPDIUM BUSH	1
SUGAR MAPLE TREE	4

Proposed Parking & Landscaping Plan

1
C-1.0

SCALE: 1"=10'



Parking Summary

SPACES REQUIRED

20 BEDROOMS

16 SPACES NEEDED

SPACES PROVIDED

19 REGULAR SPACES

1 HANDICAP / VAN ACCESSIBLE

20 TOTAL

3-A-17-UR

Revised: 4/5/2017

DEVELOPER:
Phillips Stevenson
2321 East Magnolia Ave.
Knoxville, TN 37917

ENGINEER:
Rhodes Engineering and Environmental Services, LLC
PHONE: 615.480.7535
EMAIL: RhodesEngineering@gmail.com
1117 WHITNEY DRIVE
COLUMBIA, TN 38401
CIVIL, ENVIRONMENTAL
SITE DEVELOPMENT, WATER/WASTEWATER



Phillips Stevenson
2321 EAST MAGNOLIA AVE.
KNOXVILLE, KNOX COUNTY, TENNESSEE 37917

PROJECT NUMBER:
PROJECT MANAGER: CAR
DRAWN BY: RDC
CHECKED BY: CAR
DRAWING DATE: 4/5/17

DESCRIPTION:
REVISIONS: DATE:

PROPOSED
PARKING &
LANDSCAPING
PLAN

C-1.0

COPYRIGHT © 2017
By Rhodes Engineering &
Environmental Services, LLC.
All rights reserved. This drawing and these
plans or any part thereof may not be
reproduced or used in any form without the written
permission of Rhodes Engineering
& Environmental Services, LLC.