

**Johnson  
Architecture**

2210 Sutherland Ave., Suite 105  
Knoxville, TN 37919  
865.671.9060  
jainc.com

NOT FOR CONSTRUCTION  
**FREELIMINARY**

2/27/13

A New Facility for:  
**ALLERGY, ASTHMA AND SINUS CENTER**  
South Northshore Drive  
Knoxville, Tennessee

SITE PLAN

DATE: 2/27/13  
FILE NAME:  
PROJECT NO: 123058

2/27/13  
**REVISED**  
3-C-13-02

**SP.1**

TOP EL. 834.1  
INV. EL. 828.5 (18" CON)  
INV. EL. 824.8

EL. 833.7  
EL. 824.9

TOP EL. 838.1  
UNABLE TO OPEN

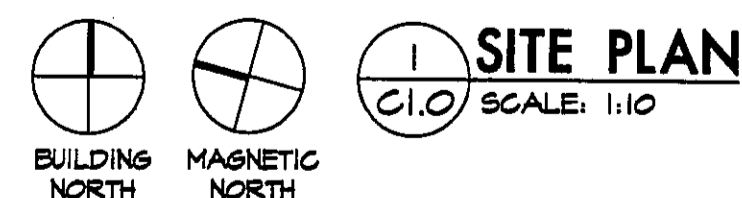
EL. 838.5  
EL. 833.1 (NE)  
EL. 829.6 (NW)  
BLE TO OPEN

EL. 838.7  
EL. 830.6

TOP EL. 839.4  
INV. EL. 833.9

TOP EL. 841.3  
INV. EL. 835.4

PARKER KNOXVILLE, INC.  
TAX MAP 154, PARCEL 94.04  
INSTRUMENT #200909100018658



NOTES:

- PROPOSED USE: MEDICAL OFFICE
- NUMBER OF EMPLOYEES: 1 EMPLOYEES
- PARKING COUNT:  
EXISTING: 24 SPACES (INCL. 2 ACCESSIBLE SPACES)  
NEW: 7 SPACES  
TOTAL: 31 SPACES
- TOTAL PARKING & PAVED AREAS (ASPHALT):  
PARKING: 11,896 S.F.  
SIDEWALKS: 941 S.F.  
TOTAL: 12,771 S.F.
- TOTAL BUILDING AREA: 4,118 S.F.
- TOTAL LOT: 26,014.80 S.F.

PLOT SCALE: As Noted



**Johnson  
Architecture**

2240 Sutherland Ave., Suite 105  
Knoxville, TN 37919  
865.671.9060  
jainc.com

NOT FOR CONSTRUCTION  
**PRELIMINARY**  
NOT FOR CONSTRUCTION

1/28/13

A New Facility for:  
**ALLERGY, ASTHMA AND SINUS CENTER**  
South Northshore Drive  
Knoxville, Tennessee

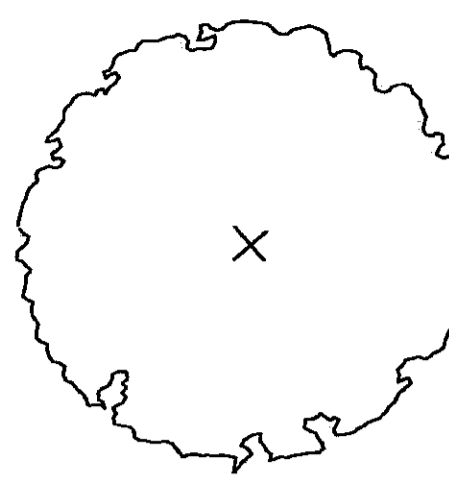
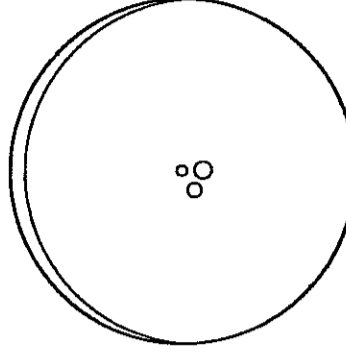
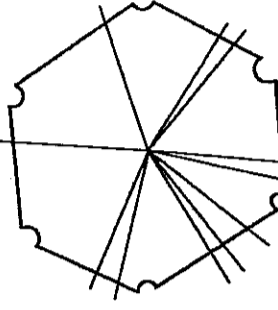
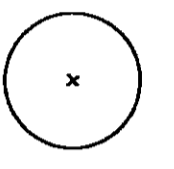






Landscape Plan

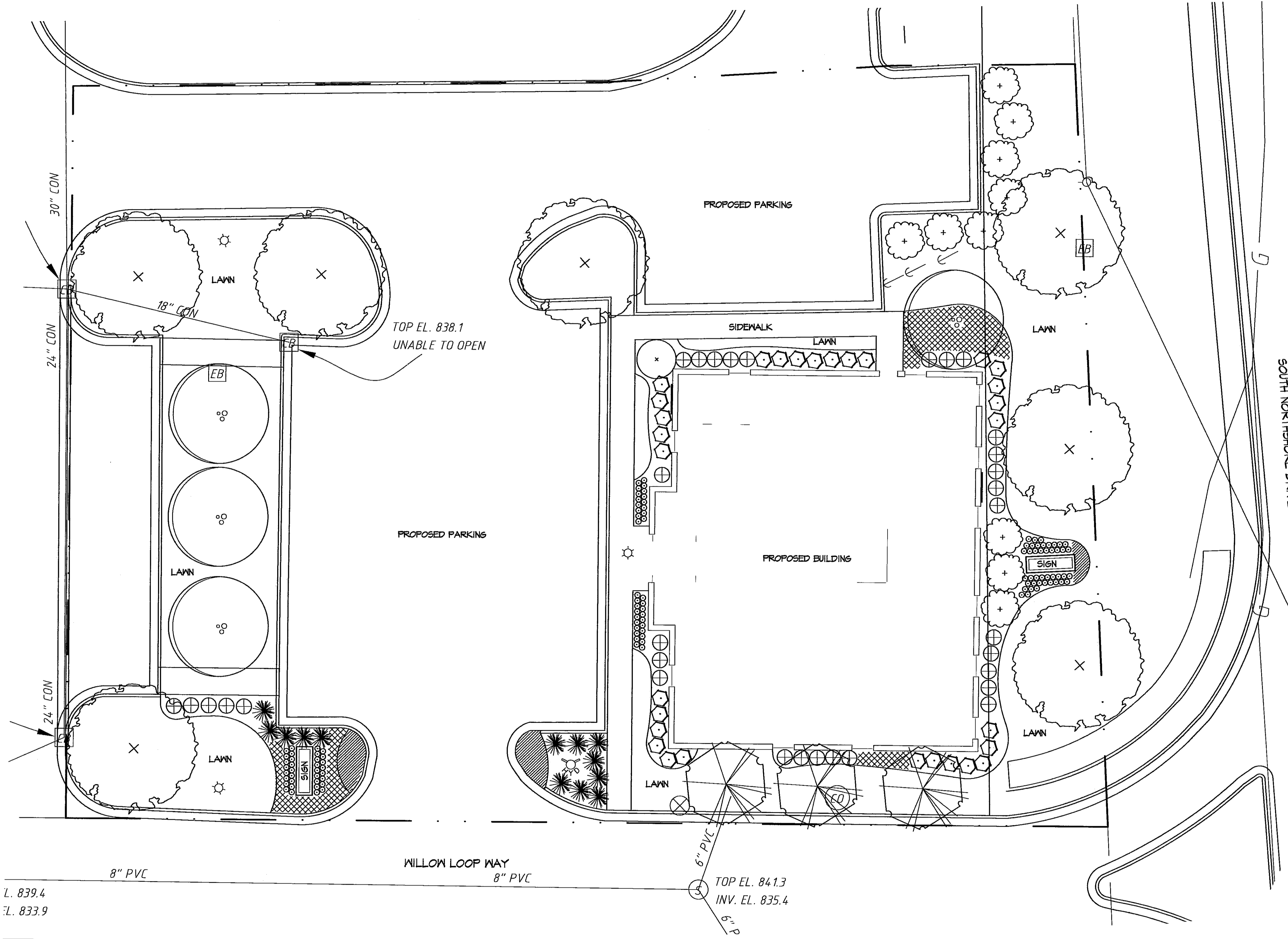
USE ON REVIEW

DATE: January 28, 2013  
FILE NAME:  
PROJECT NO:

3-C-13-UR

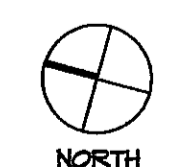
**L1.0**

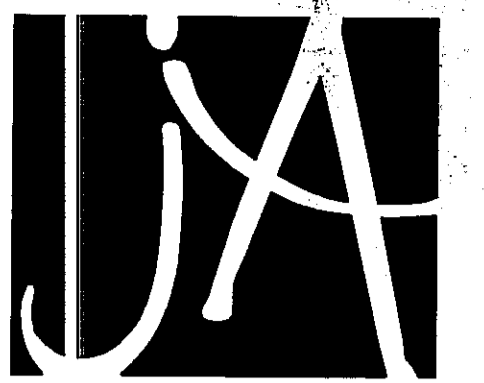
-  Legacy Sugar Maple
  -  River Birch
  -  Fringe Tree
  -  Oakleaf Hydrangea
  -  'Allegheny' Vitumnium
  -  'Merlot' itea
  -  'Shamrock' Inkberry Holly
  -  Harbor Belle Nandina
  -  Annuals for Seasonal Color
  -  American Pachysandra
- PLANT LEGEND**



L. 839.4  
7. 833.9

**LANDSCAPE PLAN**  
L1.0  
SCALE: 1" = 10'





Johnson  
Architecture

2241 Sutherland Ave., Suite 105  
Knoxville, TN 37919  
865.671.9060  
jainc.com

NOT FOR CONSTRUCTION  
**PRELIMINARY**  
NOT FOR CONSTRUCTION

2/27/13

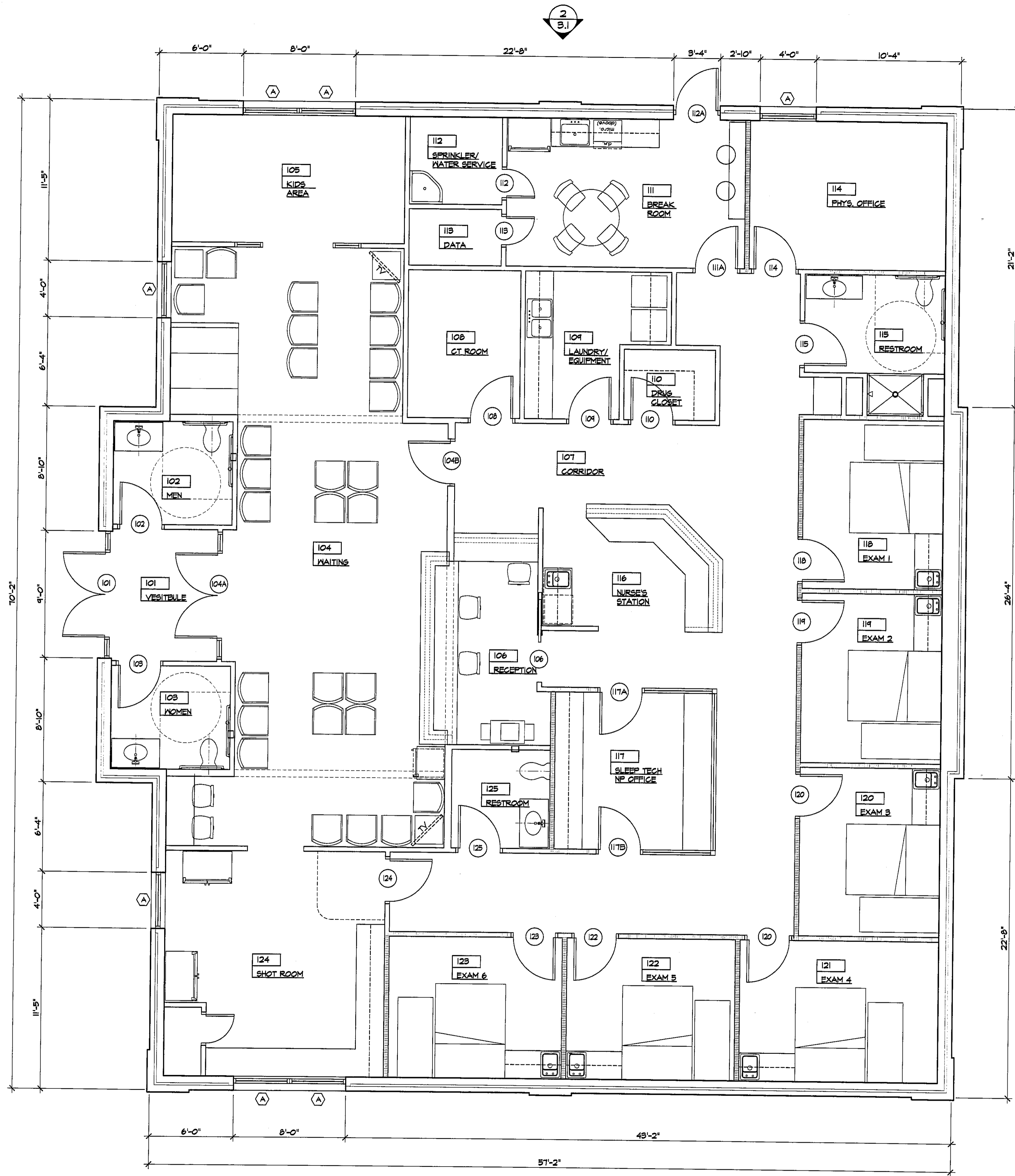
A New Facility for:  
**ALLERGY, ASTHMA AND SINUS CENTER**  
South Northshore Drive  
Knoxville, Tennessee

FLOOR PLAN

DATE: 2/27/13  
FILE NAME:  
PROJECT NO: 123058

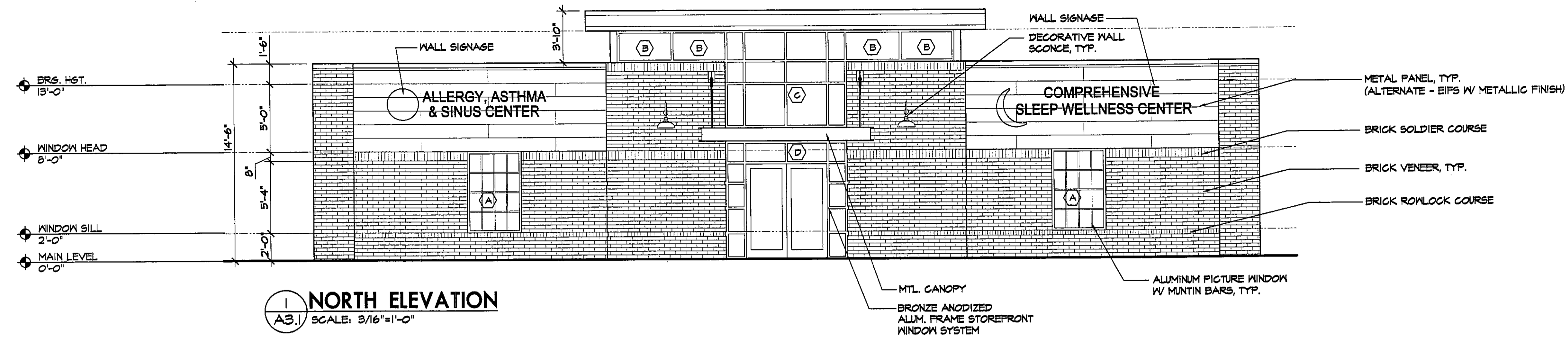
2/27/13  
**REVISED**  
3-C-13-VR

**A2.1**

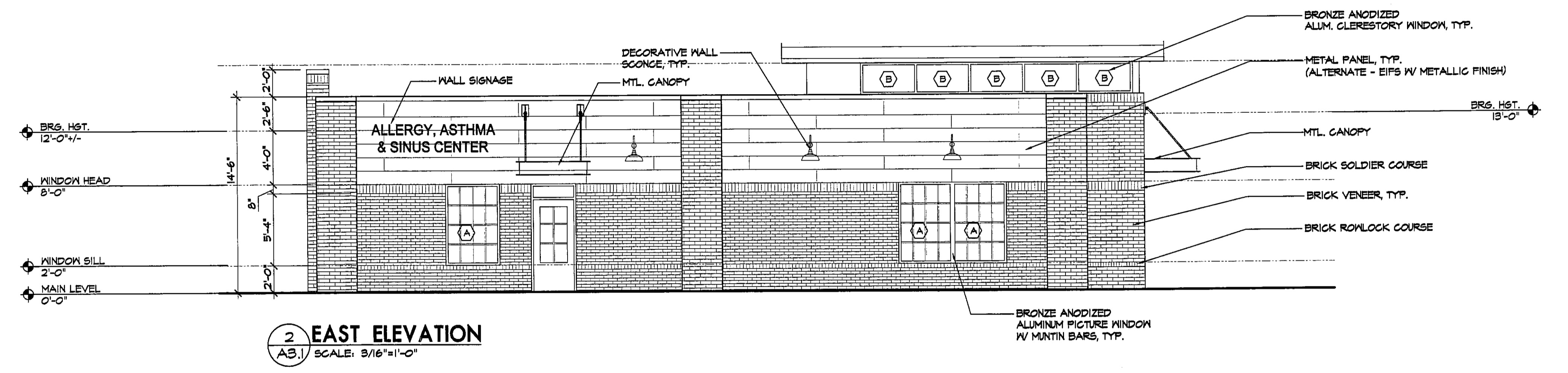


BUILDING NORTH  
MAGNETIC NORTH  
**FLOOR PLAN**  
A2.1 SCALE: 1/4"=1'-0"

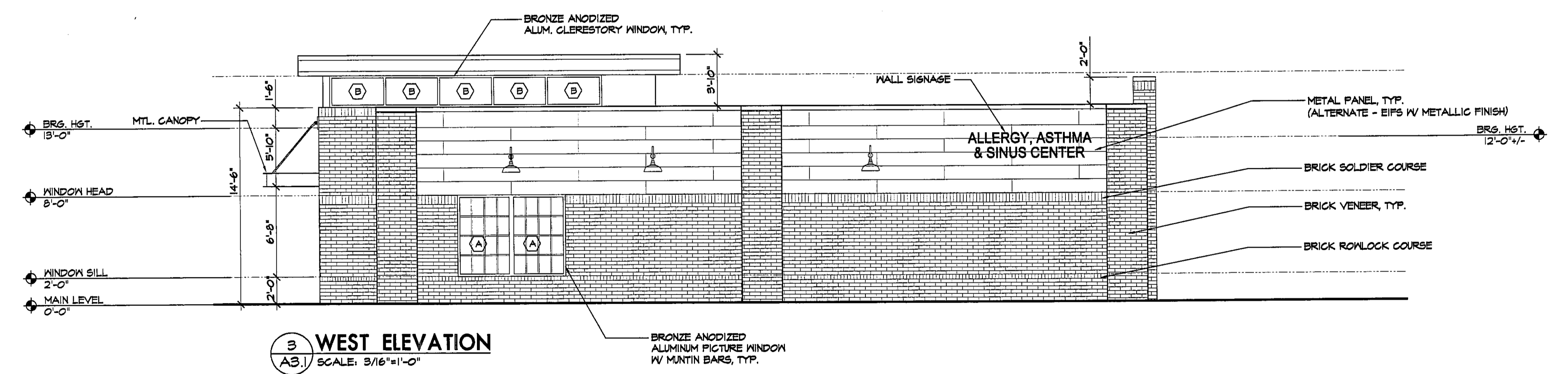
PLOT SCALE: As Noted



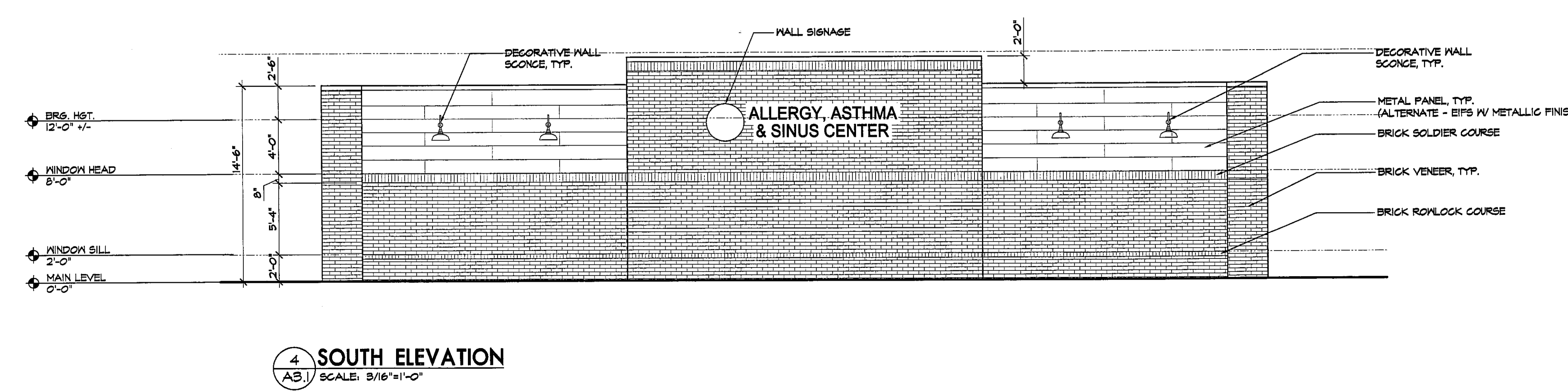
**1 NORTH ELEVATION**  
A3.1 SCALE: 3/16"=1'-0"



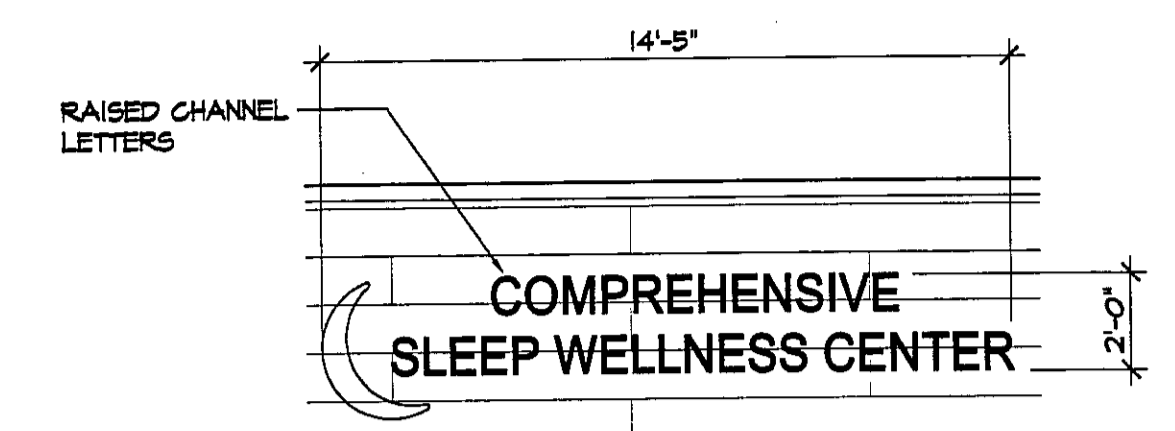
**2 EAST ELEVATION**  
A3.1 SCALE: 3/16"=1'-0"



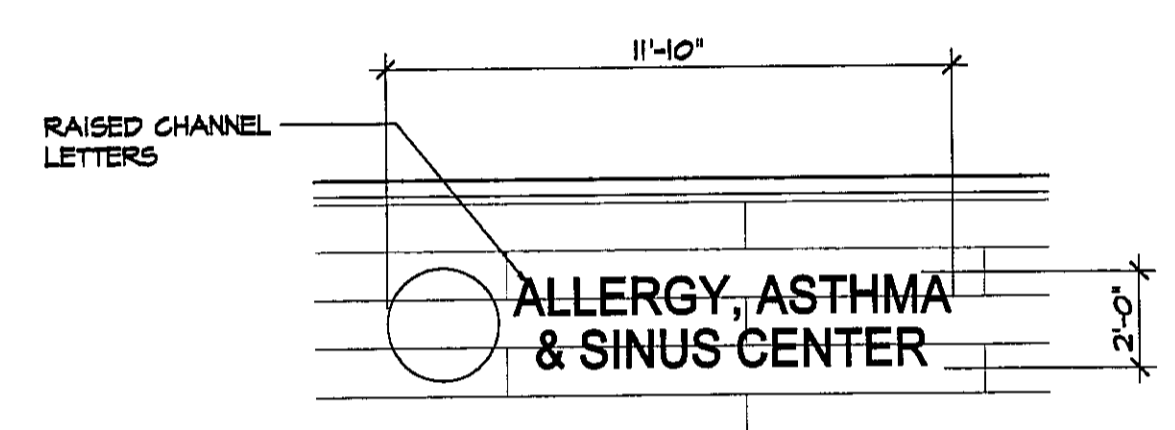
**3 WEST ELEVATION**  
A3.1 SCALE: 3/16"=1'-0"



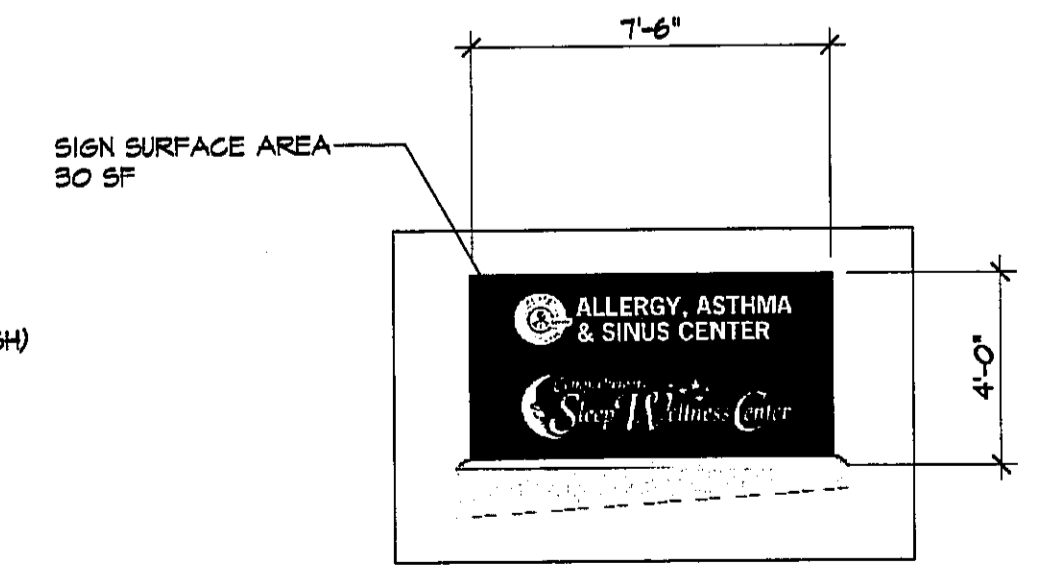
**4 SOUTH ELEVATION**  
A3.1 SCALE: 3/16"=1'-0"



**5 TYPICAL WALL SIGNAGE**  
A3.1 SCALE: 1/4"=1'-0"



**5 TYPICAL WALL SIGNAGE**  
A3.1 SCALE: 1/4"=1'-0"



**6 MONUMENT SIGNAGE**  
A3.1 SCALE: 1/4"=1'-0"

2/27/13  
**REVISED**  
3-c-13-112

PLOT SCALE: As Noted