



CAMPUS EXTERIOR SIGNAGE PLAN

EXTERIOR SIGNAGE, OUTLYING WAYFINDING & IDENTIFICATION LOCATIONS

SIGN LOCATION PLANS

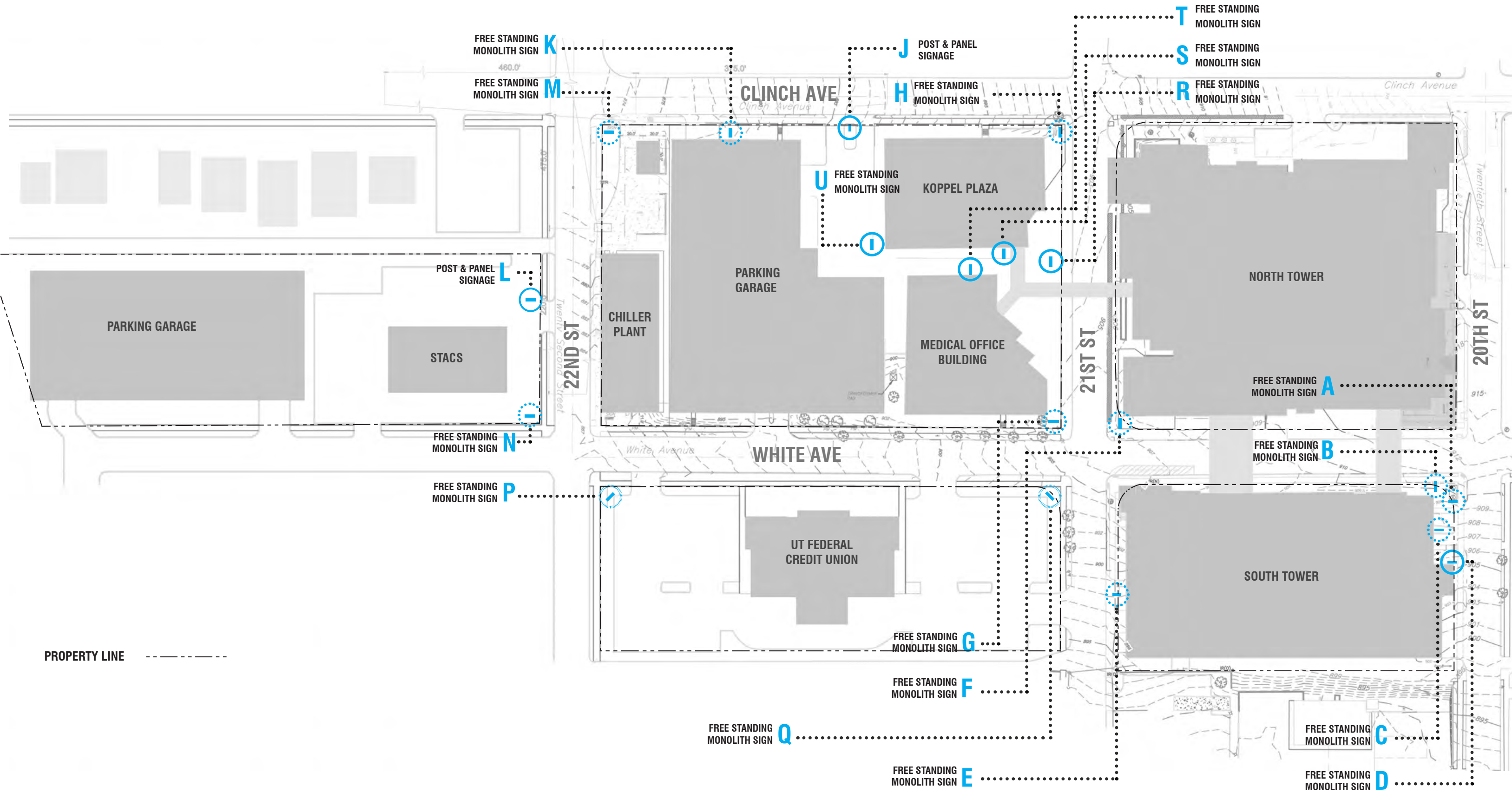
TENNESSEE CHILDREN'S

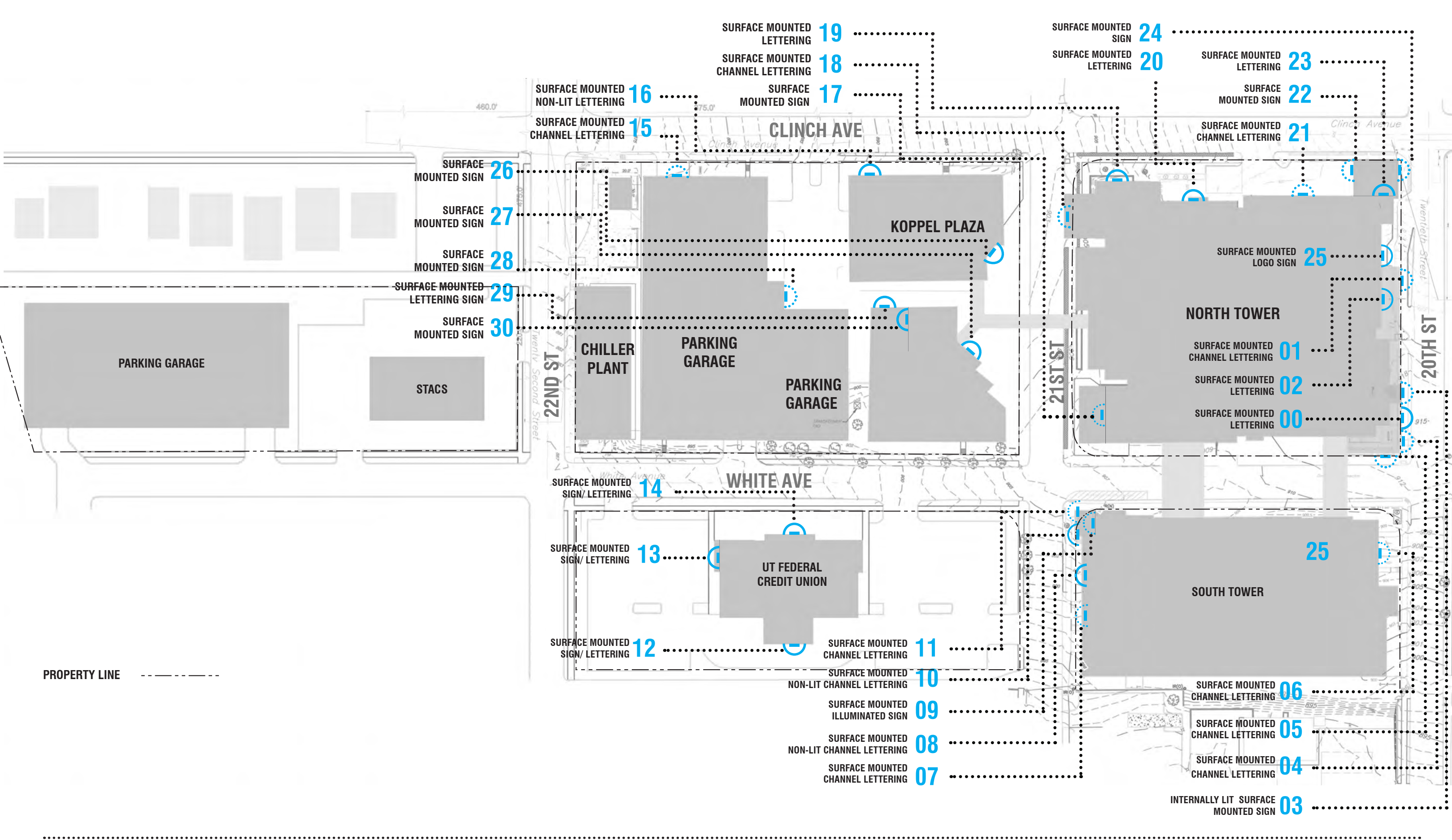
- 03** **ETCH MASTER PLAN**
FLOOR MOUNTED SIGNAGE
- 04** **ETCH MASTER PLAN**
BUILDING MOUNTED SIGNAGE
- 05** **TYPICAL SIGNS**
SIGN TYPES A & B
- 06** **TYPICAL SIGNS**
SIGN TYPES C & D
- 07** **MONOLITH SIGNS**
LOCATIONS A, B
- 08** **MONOLITH & SURFACE SIGNS**
LOCATIONS C, D, 06
- 09** **ETCH SOUTH TOWER EAST**
ELEVATION
- 10** **ETCH SOUTH TOWER WEST**
ELEVATION
- 11** **ETCH SOUTH TOWER SOUTH**
ELEVATION

- 12** **ETCH SOUTH TOWER ELEVATION**
SURFACE MOUNTED SIGNS LOCATIONS
07,08,09,10,11
- 13** **MONOLITH SIGNS**
LOCATIONS F, G, H
- 14** **VISITORS PARKING SIGNS**
LOCATION J,K, L, 15
- 15** **ETCH CHILLER MONOLITH SIGNS**
LOCATIONS M, N
- 16** **UT FEDERAL CREDIT UNION**
LOCATIONS 12, 13, 14, P, Q
- 17** **ETCH NORTH TOWER ED ENTRANCE**
LOCATIONS 0, 2, 3, 4, 5
- 18** **ETCH NORTH TOWER NORTH EAST SIGNS**
LOCATIONS 1, 23, 24, 25
- 19** **ETCH BOILER & NORTH ELEVATION SIGNS**
LOCATIONS 20, 21, 22, 24

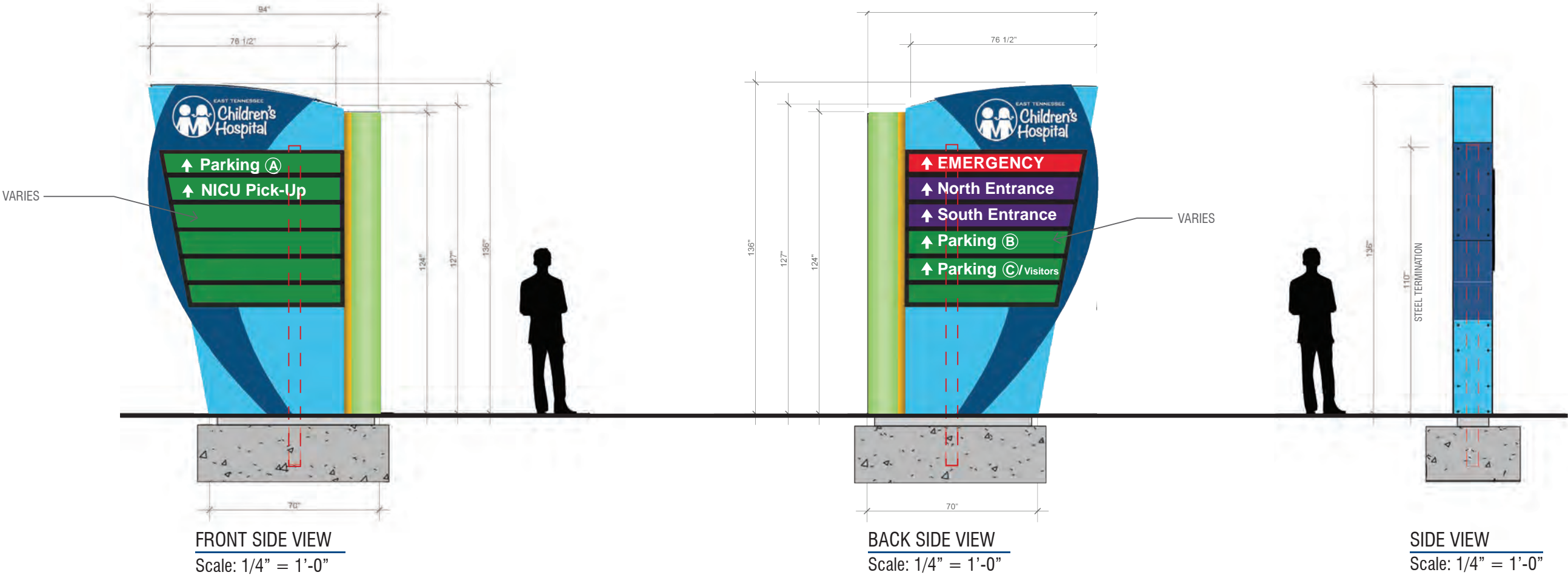
- 20** **NORTH TOWER SURFACE SIGNS**
LOCATIONS 16, 17, 18, 19
- 21** **KOPPEL PLAZA MONOLITH SIGNS**
LOCATIONS R, S, T, U
- 22** **KOPPEL PLAZA SURFACE SIGNS**
LOCATIONS 26, 27, 28
- 23** **KOPPEL PLAZA SURFACE SIGNS**
LOCATIONS 29, 30



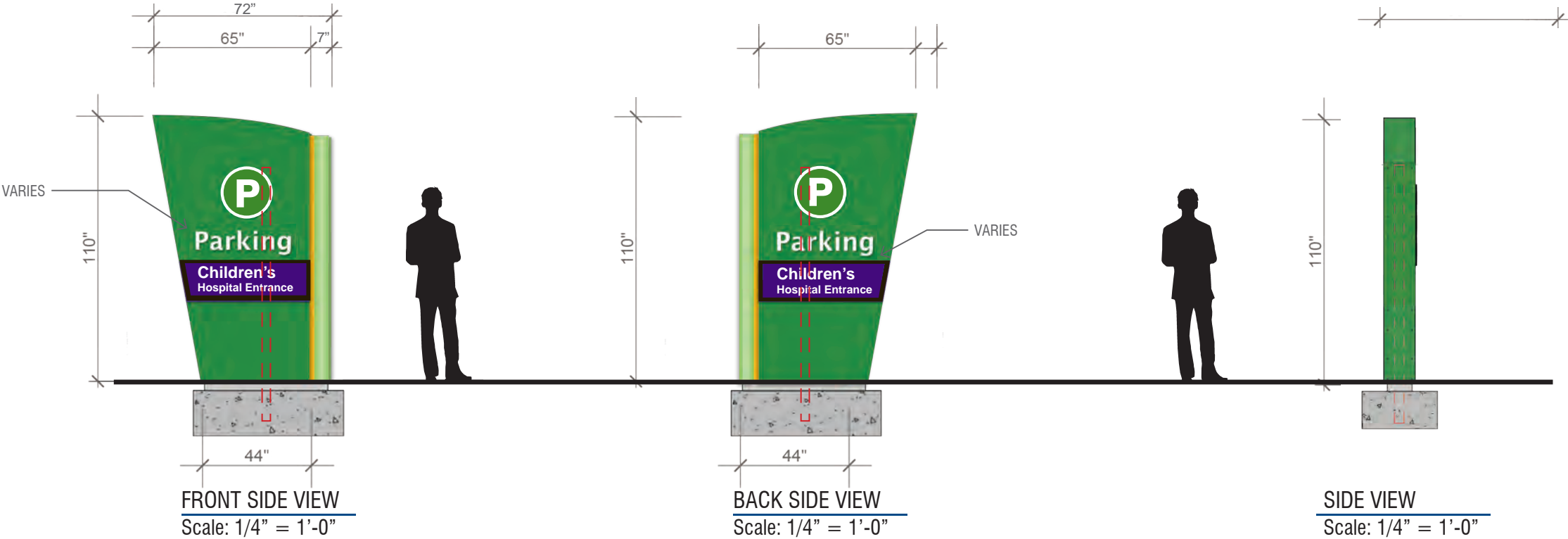




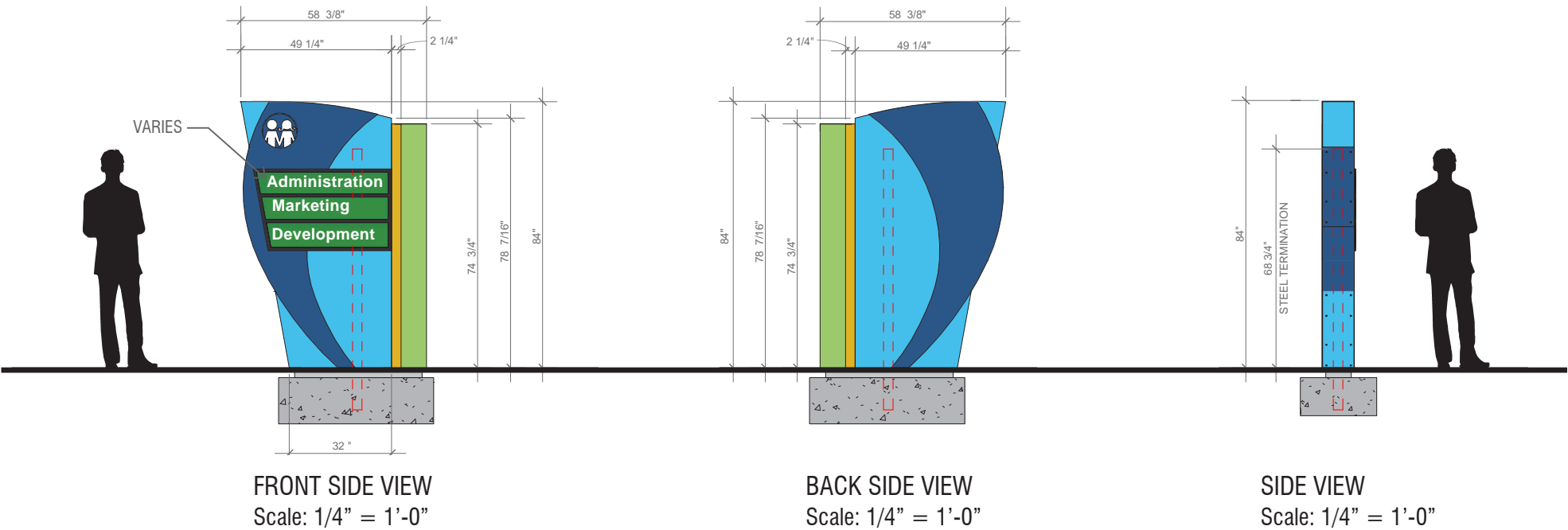
SIGN TYPE A
 INTERNALLY ILLUMINATED
 MONOLITH SIGN
 136" x 94"



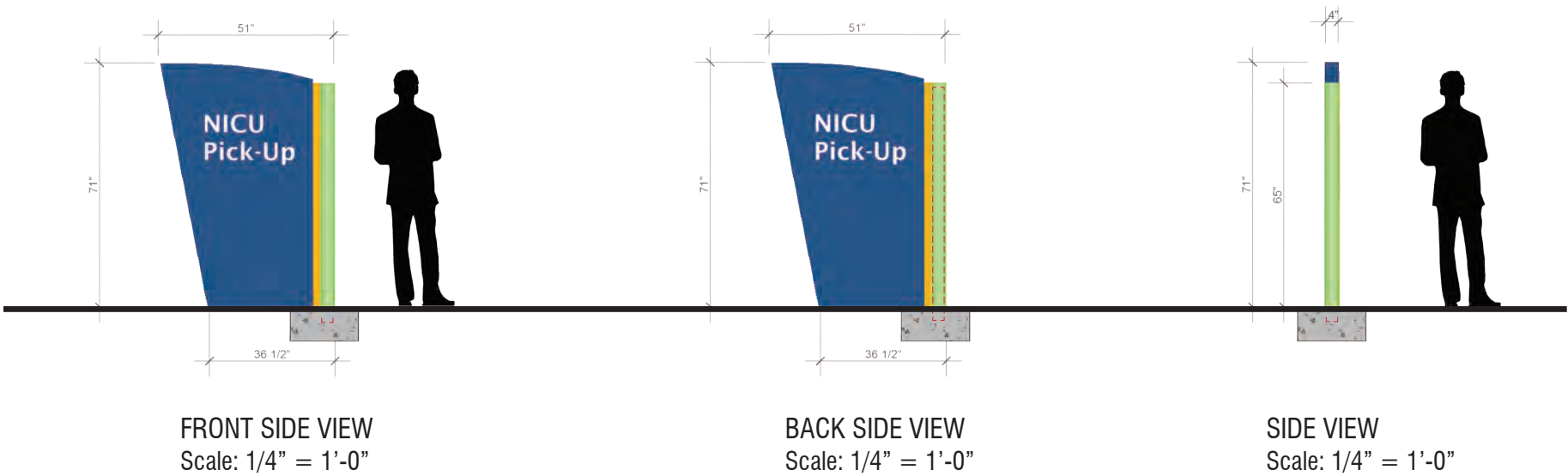
SIGN TYPE B
 INTERNALLY ILLUMINATED
 MONOLITH SIGN
 110 x 65"



SIGN TYPE C:
 INTERNALLY ILLUMINATED
 MONOLITH SIGN
 84" x 58"



SIGN TYPE D
 DOUBLE SIDED POST & PANEL
 NON ILLUMINATED SIGN
 71" x 51"





Side 1



Side 2

LOCATION A
TWO SIDED, INTERNALLY
ILLUMINATED MONOLITH SIGN
TYPE A



Side 1



Side 2

LOCATION B
TWO SIDED, INTERNALLY
ILLUMINATED MONOLITH SIGN
TYPE A





Side 1



Side 2

LOCATION C
DOUBLE SIDED, INTERNALLY
ILLUMINATED MONOLITH SIGN
TYPE B



Side 1



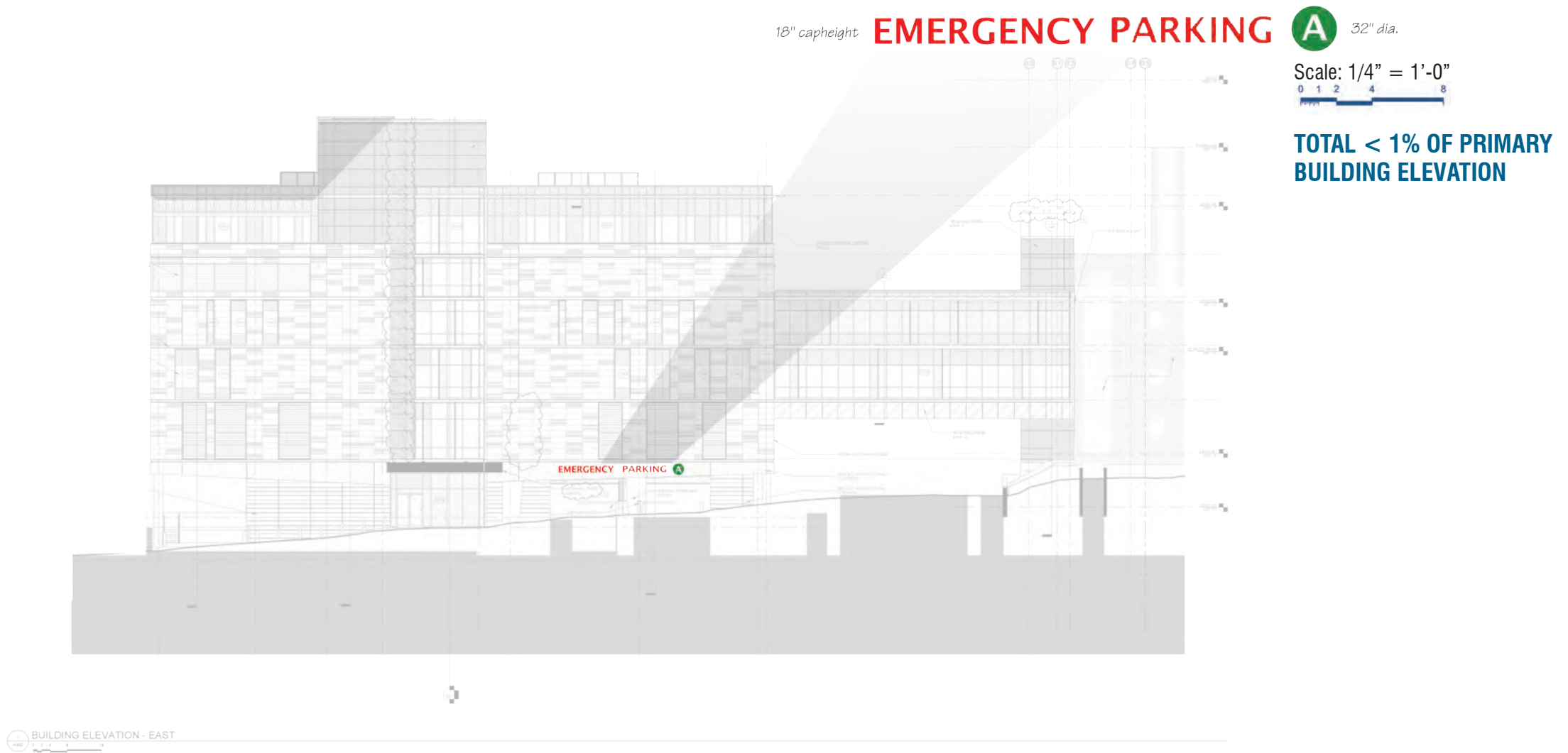
Side 2

LOCATION D
DOUBLE SIDED, NON-ILLUMINATED
MONOLITH SIGN
TYPE D



18" Capheight **EMERGENCY PARKING** **A** 32" Diameter

LOCATION 06
SURFACE MOUNTED
INTERNALLY ILLUMINATED
CHANNEL LETTERING



LOCATION 09
INTERNALLY ILLUMINATED SURFACE MOUNTED SIGN
Scale: 1/4" = 1'-0"



120" Dia.



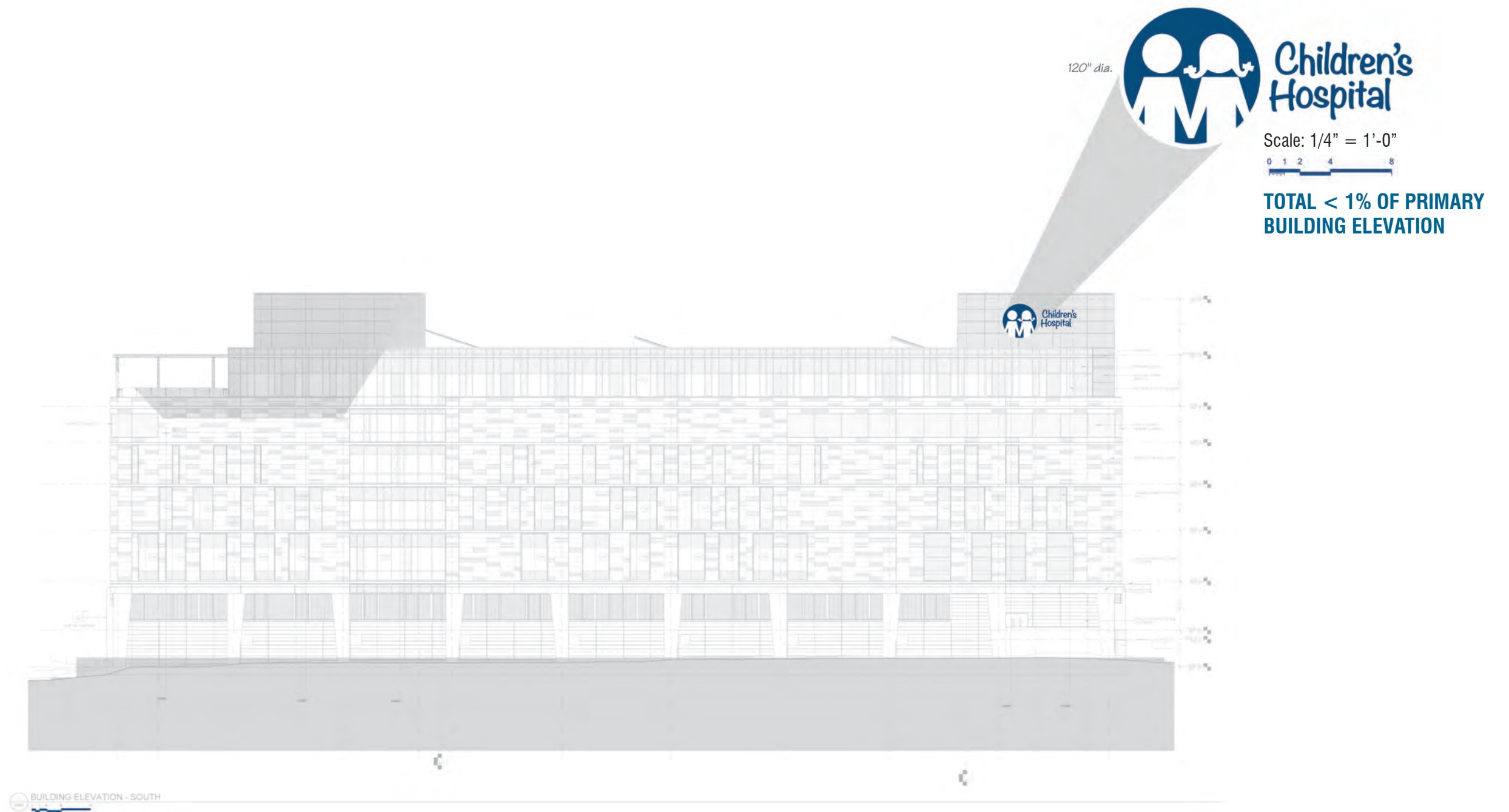
LOCATION 11
INTERNALLY ILLUMINATED, SURFACE
MOUNTED CHANNEL LETTERING
18" Capheight **SOUTH ENTRANCE**

LOCATION 08
NON-LIT, SURFACE MOUNTED
CHANNEL LETTERING
DISCOVERY 25" Capheight

LOCATION 07
INTERNALLY ILLUMINATED, SURFACE
MOUNTED CHANNEL LETTERING
18" Capheight **PARKING B** 32" Dia.



**TOTAL = 1.8% OF PRIMARY
BUILDING ELEVATION**





LOCATION 09
INTERNALLY ILLUMINATED SURFACE MOUNTED SIGN



SOUTH ENTRANCE 18" Capheight **700** 15" Capheight

LOCATION 11
SURFACE MOUNTED, INTERNALLY ILLUMINATED, CHANNEL LETTERING

LOCATION 10
SURFACE MOUNTED, NON-LIT CHANNEL LETTERING



32" Diameter
PARKING B
18" Capheight

LOCATION 07
INTERNALLY ILLUMINATED, SURFACE MOUNTED CHANNEL LETTERING

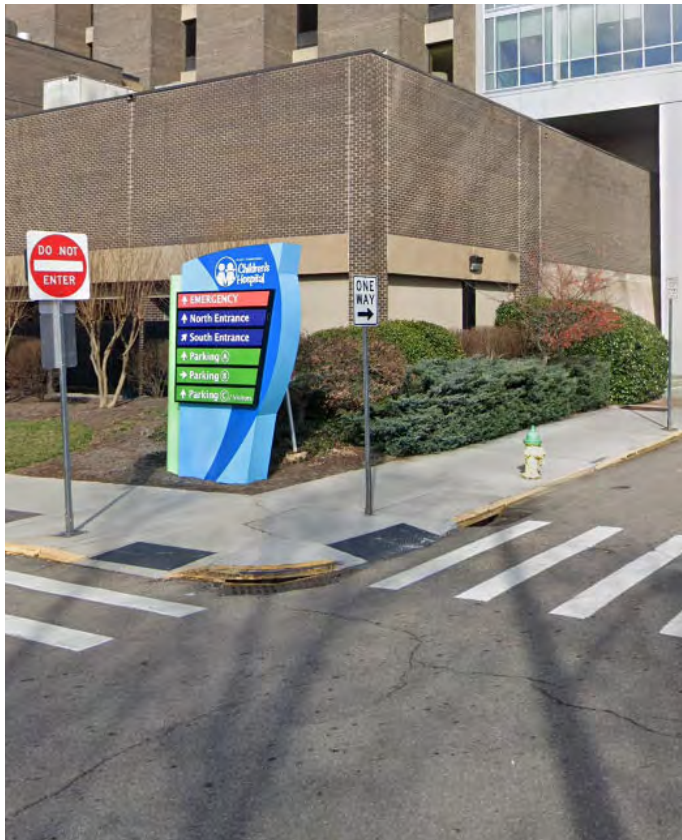


Side 1

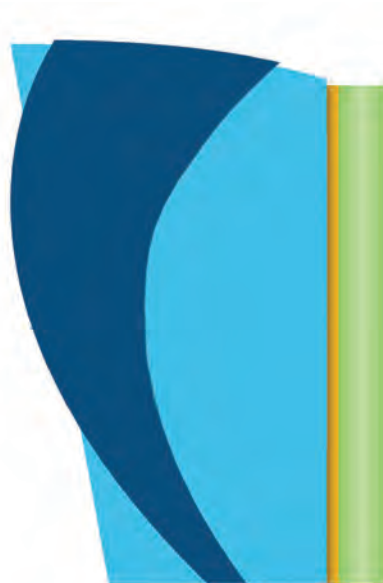


Side 2

LOCATION E
DOUBLE SIDED, INTERNALLY ILLUMINATED MONOLITH SIGN
TYPE B



Side 1



Side 2

LOCATION F
DOUBLE SIDED, INTERNALLY
ILLUMINATED MONOLITH SIGN
TYPE A

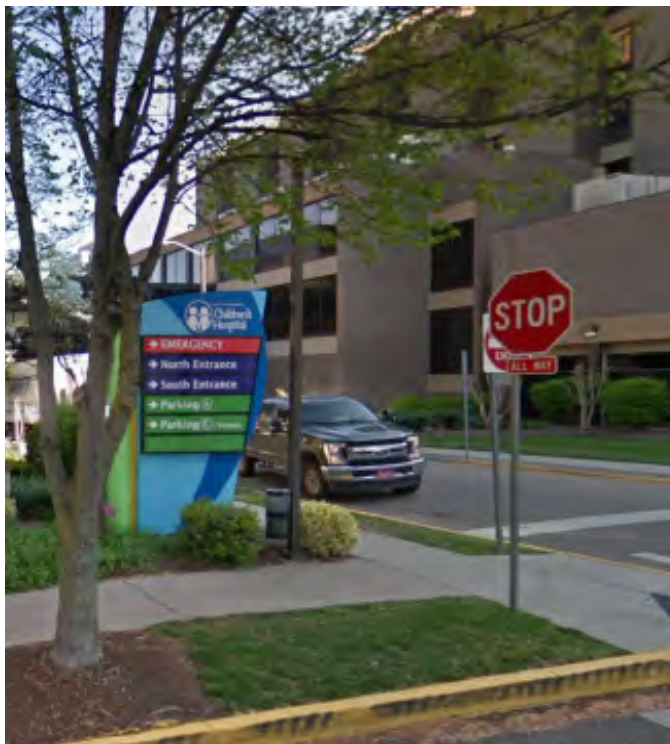


Side 1



Side 2

LOCATION H
DOUBLE SIDED, INTERNALLY
ILLUMINATED MONOLITH SIGN
TYPE A

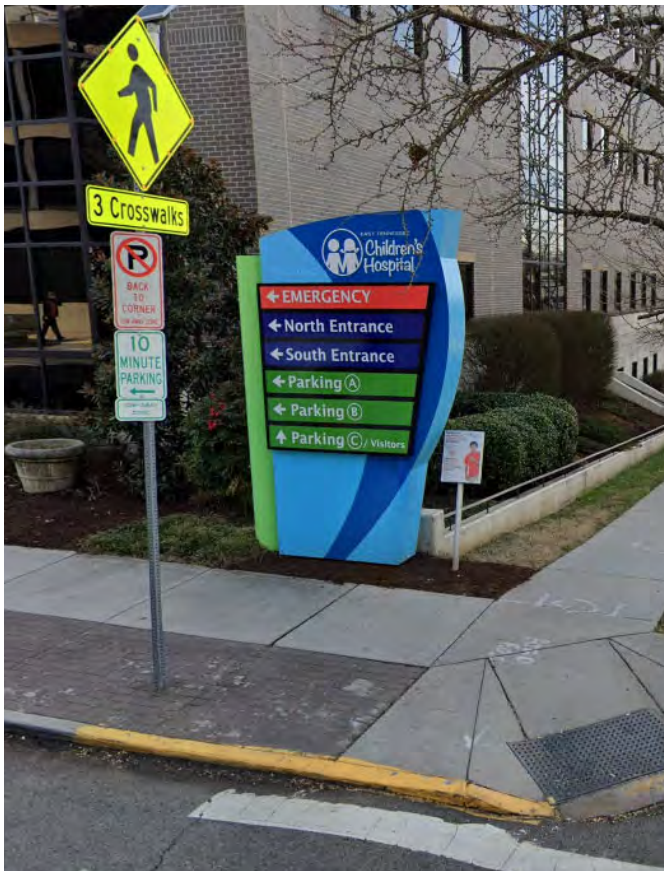


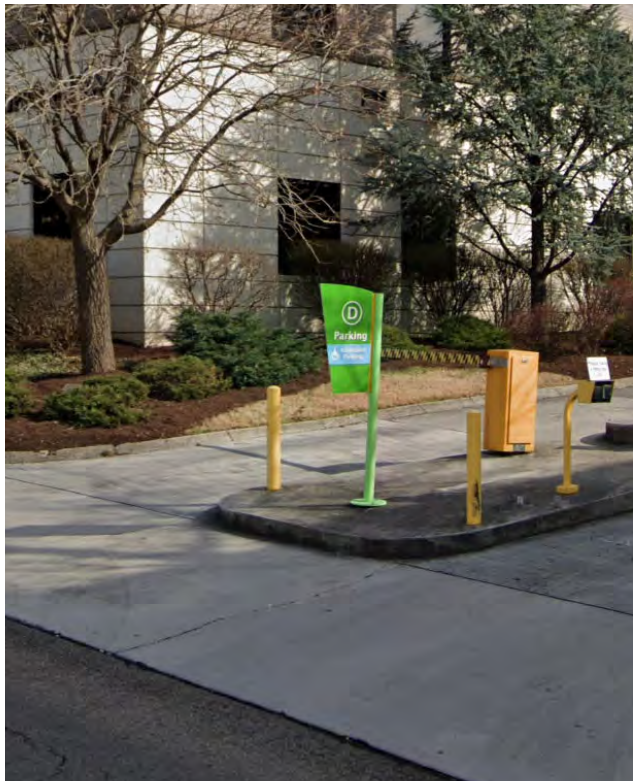
Side 1



Side 2

LOCATION G
DOUBLE SIDED, INTERNALLY
ILLUMINATED MONOLITH SIGN
TYPE A



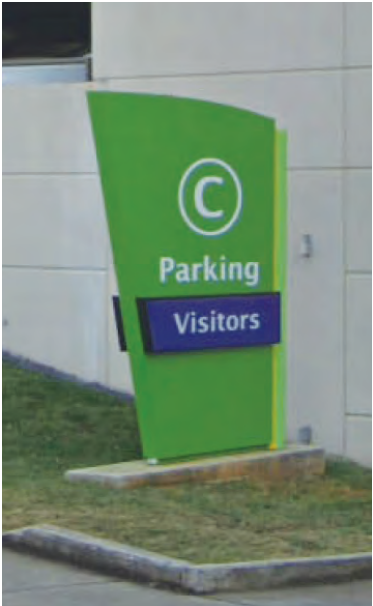


LOCATION J
DOUBLE SIDED, NON-ILLUMINATED
POST & PANEL SIGN
36" x 22 1/2" PANEL



32" Diameter
18" Capheight
PARKING C / VISITORS

LOCATION 15
FACE LIT, SURFACE
MOUNTED CHANNEL LETTERING



Side 1



Side 2

LOCATION K
DOUBLE SIDED, INTERNALLY
ILLUMINATED MONOLITH SIGN
TYPE B



LOCATION L
DOUBLE SIDED, NON-ILLUMINATED
POST & PANEL SIGN
36" x 22 1/2" PANEL



LOCATION M
DOUBLE SIDED, INTERNALLY
ILLUMINATED MONOLITH SIGN
TYPE A



Side 1



Side 2



LOCATION N
DOUBLE SIDED, INTERNALLY
ILLUMINATED MONOLITH SIGN
TYPE A



Side 1



Side 2



LOCATION 12
SURFACE MOUNTED, NON-LIT
LETTERING & SIGN



LOCATION 14
SURFACE MOUNTED, NON-LIT
LETTERING & SIGN



LOCATION Q
DOUBLE SIDED INTERNALLY
ILLUMINATED MONOLITH SIGN
TYPE C



LOCATION P
ONE SIDED, FLOOR-LIT
MONOLITH SIGN



LOCATION 13
SURFACE MOUNTED, NON-LIT
LETTERING & SIGN



20" Capheight

EMERGENCY

LOCATION 05
SURFACE MOUNTED
INTERNALLY LIT
CHANNEL LETTERING

18" Capheight **EMERGENCY**

LOCATION 04
SURFACE MOUNTED
INTERNALLY LIT
CHANNEL LETTERING

LOCATION 00
SURFACE MOUNTED
NON-LIT CHANNEL
LETTERING
14" Capheight

LOCATION 03
SURFACE MOUNTED
INTERNALLY LIT
LOGO SIGN
106" Dia.

LOCATION 02
SURFACE MOUNTED
NON-LIT LETTERING

**TOTAL = 1.34% OF PRIMARY
BUILDING ELEVATION**

PILOT EMERGENCY CARE CENTER



TOTAL < 2% OF PRIMARY
BUILDING ELEVATION

18" Capheight **EMERGENCY**

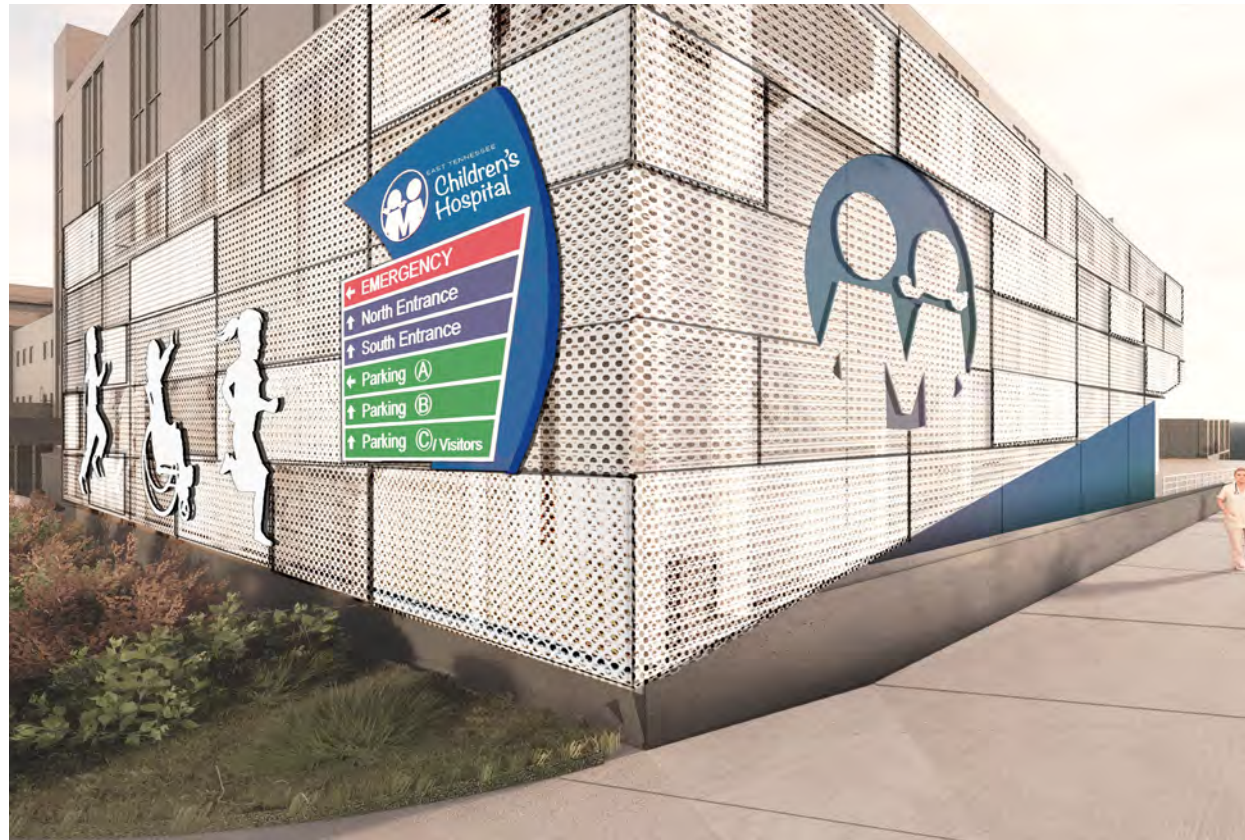
LOCATION 01
SURFACE MOUNTED
INTERNALLY LIT
CHANNEL LETTERING

LOCATION 25
SURFACE MOUNTED
INTERNALLY LIT LOGO

LOCATION 23
SURFACE MOUNTED
NON-LIT LETTERING

LOCATION 24
SURFACE MOUNTED
INTERNALLY LIT SIGN





LOCATION 24
SURFACE MOUNTED
INTERNALLY ILLUMINATED SIGN
TYPE D / MODIFIED



LOCATION 21
SURFACE MOUNTED INTERNALLY
ILLUMINATED CHANNEL LETTERING



LOCATION 22
SURFACE MOUNTED
INTERNALLY ILLUMINATED SIGN
TYPE D / MODIFIED



LOCATION 20
SURFACE MOUNTED
NON-LIT LETTERING



LOCATION 16
SURFACE MOUNTED
NON-LIT LETTERING



LOCATION 17
SURFACE MOUNTED
LOGO SIGN

15" **NORTH ENTRANCE**



LOCATION 18
SURFACE MOUNTED INTERNALLY
ILLUMINATED CHANNEL LETTERS
FRONT SIDE VIEW
Scale: 3/8" = 1'-0"



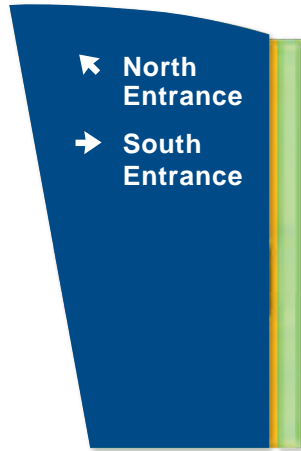
LOCATION 19
SURFACE MOUNTED
NON-LIT LETTERING



LOCATION R
DOUBLE SIDED, NON-LIT
MONOLITH SIGN
TYPE D



Side 1



Side 2

LOCATION S
DOUBLE SIDED, NON-LIT
MONOLITH SIGN
TYPE C



LOCATION U
DOUBLE SIDED, NON-LIT
MONOLITH SIGN
TYPE D



Side 1



Side 2

LOCATION T
DOUBLE SIDED, NON-LIT
MONOLITH SIGN
TYPE C





Koppel Plaza

LOCATION 26
SURFACE MOUNTED,
NON-LIT CABINET
24" x 156"



Medical Office Building

LOCATION 27
SURFACE MOUNTED,
NON-LIT CABINET
24" x 156"

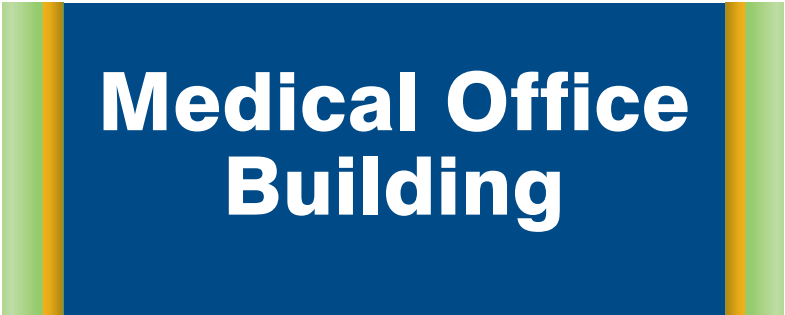
Parking © / Visitors

LOCATION 28
SURFACE MOUNTED,
INTERNALLY ILLUMINATED CABINET
18" x 156"





LOCATION 29
 SURFACE MOUNTED LETTERING SIGN:
CHILDREN'S HOSPITAL
MEDICAL OFFICE BUILDING



LOCATION 30
 SURFACE MOUNTED
 NON-LIT CABINET