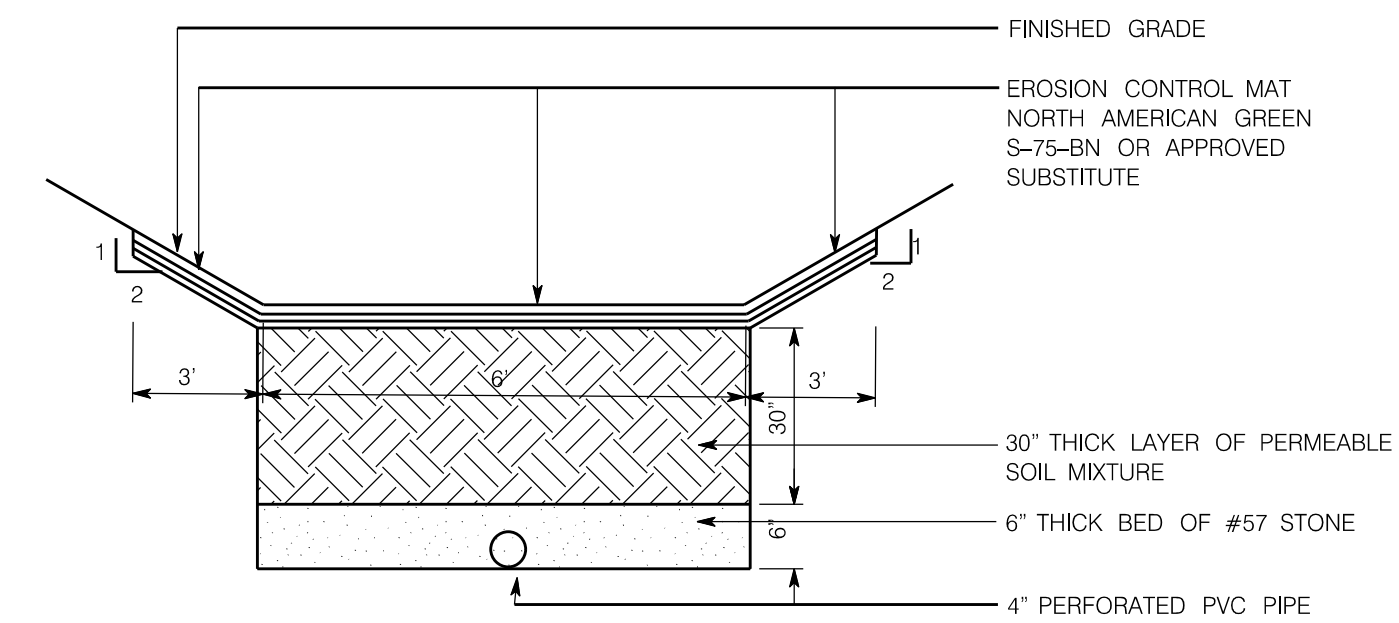


LEGEND:

| EXISTING | PROPOSED | |
|----------|----------|--------------------------|
| | | GROUND CONTOUR ELEVATION |
| | | SPOT ELEVATION |
| | | STRUCTURE |
| | NA | PROPERTY LINE |
| | NA | EASEMENT |
| | | EDGE OF PAVEMENT |
| | | STORM DRAIN |
| | | SANITARY SEWER |
| | | POTABLE WATER |
| | | NATURAL GAS |
| | | OVERHEAD ELECTRICAL |
| | | WATER METER |
| | | FIRE HYDRANT |
| NA | | SURFACE FLOW |
| NA | | SILT FENCING |
| | | CURB |
| | | CATCH BASIN |
| NA | | CONCRETE PAVEMENT |
| NA | | ASPHALT PAVEMENT |
| NA | | RIP RAP |

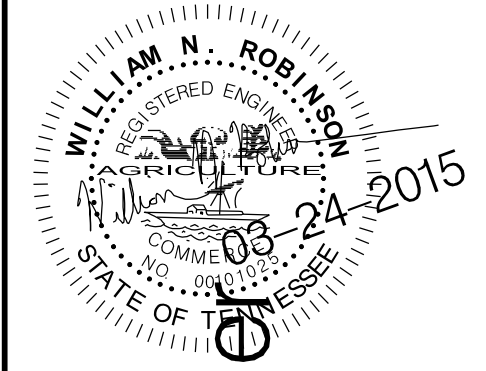


1 ENHANCED DRY SWALE DETAIL
C0.0 NOT TO SCALE

4-H-15-UR
Revised: 3/24/2015

**WILL ROBINSON
& ASSOCIATES**

131 Brentwood Dr
Oak Ridge, TN 37830
(865) 386-4200



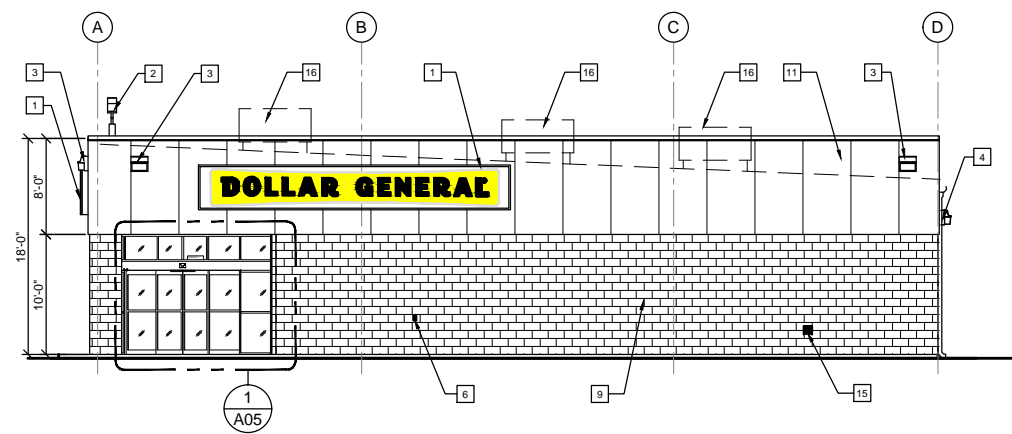
A Site Plan for:
Dollar General John Sevier

Circle Oak Drive
Knox County, Tennessee

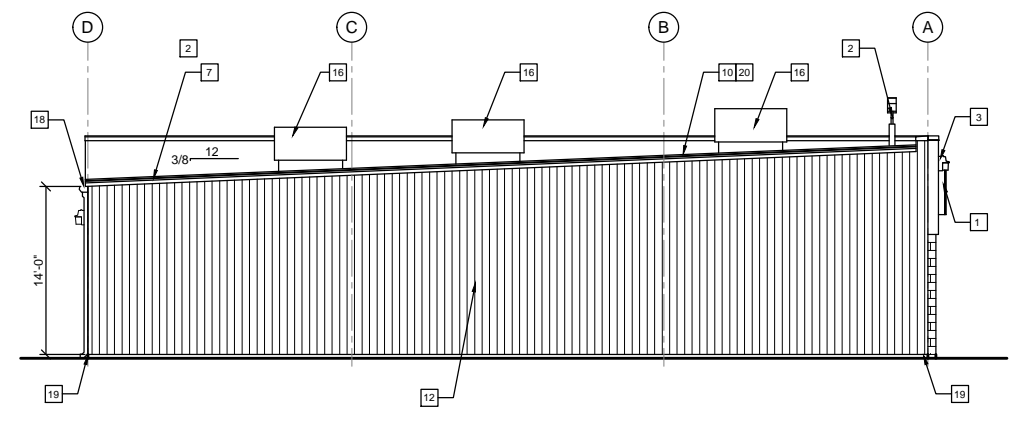
REVISIONS:

DRAWN: WNR
CHECKED: WNR
DATE: 03-24-2015
FILE NAME:
PROJECT NO:

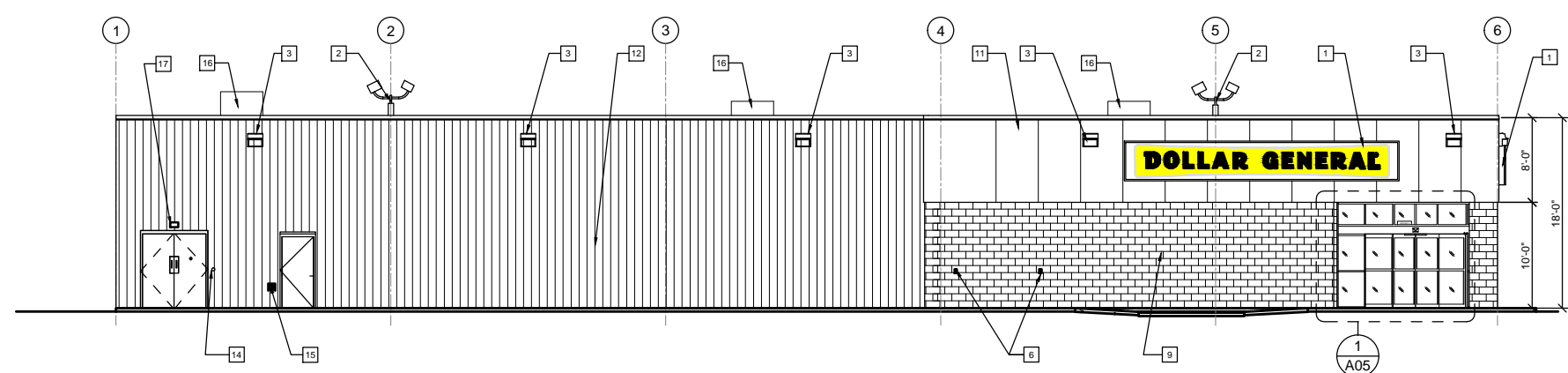
C0.0
SITE PLAN
DRAWING



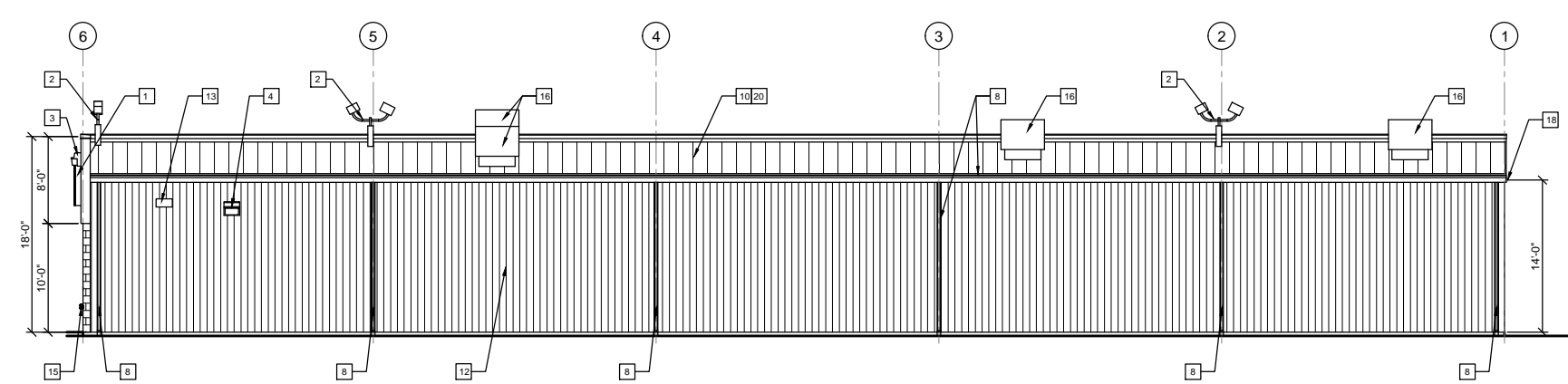
1 FRONT ELEVATION
A02 SCALE: NTS (1/8"=1'-0")



2 REAR ELEVATION
A02 SCALE: NTS (1/8"=1'-0")



3 LEFT ELEVATION
A02 SCALE: NTS (1/8"=1'-0")



4 RIGHT ELEVATION
A02 SCALE: NTS (1/8"=1'-0")

- ELEVATION KEYED NOTES
- 1 SIGN FURNISHED AND INSTALLED BY DOLLAR GENERAL CORP. WITH CIRCUIT AS NOTED ON ELECTRICAL PLAN. SIGN TO BE CENTERED ON FRONT OF BUILDING. CONTRACTOR IS TO PROVIDE ADEQUATE BLOCKING AS REQUIRED BY SIGN MANUFACTURER TO SUPPORT SIGN WEIGHT OF UP TO 1,400 LBS. EXTERIOR CANOPY SIGN SHALL BE SUPPORTED BY THE FACE OF THE CANOPY. COORDINATE THE PROPER SIGNAGE TO BE USED WITH DOLLAR GENERAL.
 - 2 BI-DIRECTIONAL SECURITY LIGHT. REFER TO ELECTRICAL DRAWINGS FOR ADDITIONAL INFORMATION.
 - 3 WALL PACK. 16'-6" A.F.F. TO TOP OF WALL PACK. REFER TO ELECTRICAL DRAWINGS FOR ADDITIONAL INFORMATION.
 - 4 WALL PACK 12'-0" A.F.F. TO TOP OF WALL PACK. REFER TO ELECTRICAL DRAWINGS FOR ADDITIONAL INFORMATION.
 - 5 WALL PACK. (ALTERNATE PARKING LIGHT) REFER TO ELECTRICAL DRAWINGS FOR ADDITIONAL INFORMATION. REQUIRED ONLY IF THERE IS PARKING THIS SIDE OF BUILDING.
 - 6 RECEPTACLE. REFER TO E1 FOR ADDITIONAL INFORMATION.
 - 7 TRIM - SEE EXTERIOR FINISH SCHEDULE FOR COLOR.
 - 8 GUTTER AND DOWNSPOUT - SEE EXTERIOR FINISH SCHEDULE FOR COLOR.
 - 9 8" SPLIT FACE CONCRETE MASONRY UNIT. PAINT TO MATCH SIDE WALL PANELS.
 - 10 STANDING SEAM METAL ROOF. GALVALUME FINISH.
 - 11 PRE-FINISHED METAL WALL PANELS. REVERSE RIB PROFILE. SEE EXTERIOR FINISH SCHEDULE FOR COLOR.
 - 12 PRE-FINISHED METAL WALL PANELS. PROVIDE TAMPER-RESISTANT FASTENERS FOR BOTTOM 8'-0". SEE EXTERIOR FINISH SCHEDULE FOR COLOR.
 - 13 VENT FOR BATHROOM EXHAUST. REFER TO M01 FOR ADDITIONAL INFORMATION.
 - 14 DOOR BUZZER. REFER TO E01 FOR ADDITIONAL INFORMATION.
 - 15 WALL HYDRANT. REFER TO P01 FOR ADDITIONAL INFORMATION.
 - 16 HVAC UNITS MOUNTED ON ROOF. REFER TO MECHANICAL SHEET M1 FOR MORE INFORMATION.
 - 17 OUTSIDE AIR TEMP. SENSOR MOUNTED OVER RECEIVING DOORS @ 8'-0" A.F.F.
 - 18 MINIMUM EAVE HEIGHT IS 14'-0" A.F.F.
 - 19 FINISHED GRADE AT EXTERIOR WALLS SHALL BE A MINIMUM OF 6" BELOW FINISHED FLOOR AT ALL NON PAVED AREAS.
 - 20 IN NORTHERN CLIMATES, PROVIDE SNOW GUARDS ON ROOF PER LOCAL CODE.
 - 21 METAL CANOPY BY PRE-ENGINEERED METAL BUILDING MANUFACTURER. (ONLY APPLICABLE TO C & D PROTOTYPES)

DESIGNER NOTE:
IF ADDITIONAL SCREENING IS REQUIRED FOR ROOF MOUNTED EQUIPMENT PER LOCAL CODES, CONTACT DOLLAR GENERAL FOR APPROVAL.

Preliminary Elevations Showing Corner Entrance Look,
Dollar General Store, John Sevier Hwy at Circle Oak Drive

4-H-15-UR
Revised: 3/24/2015

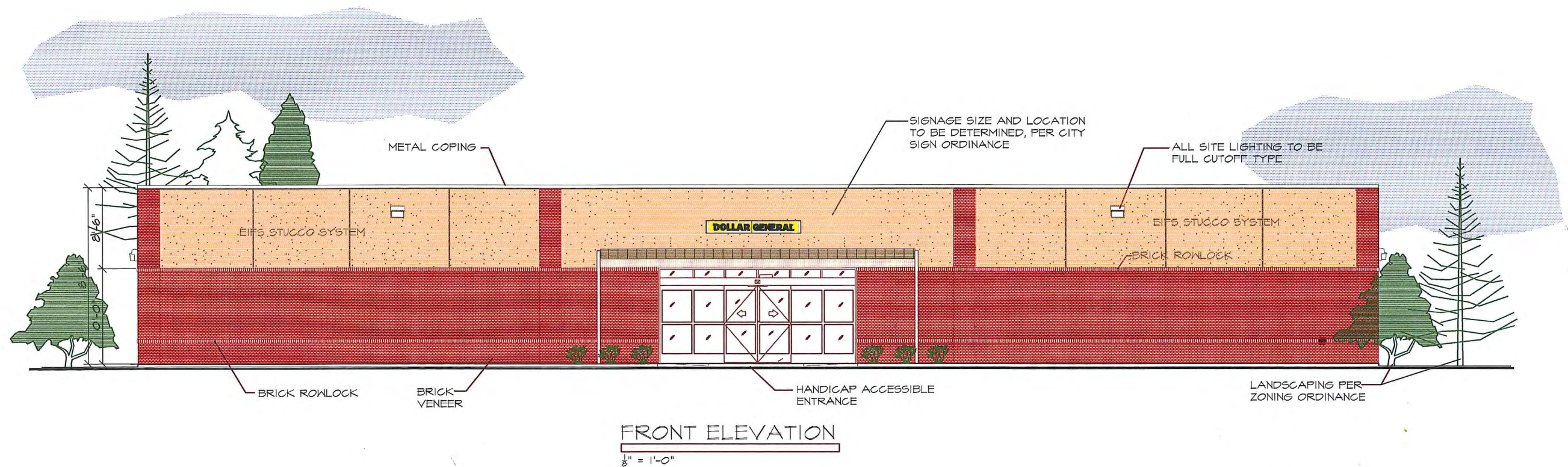
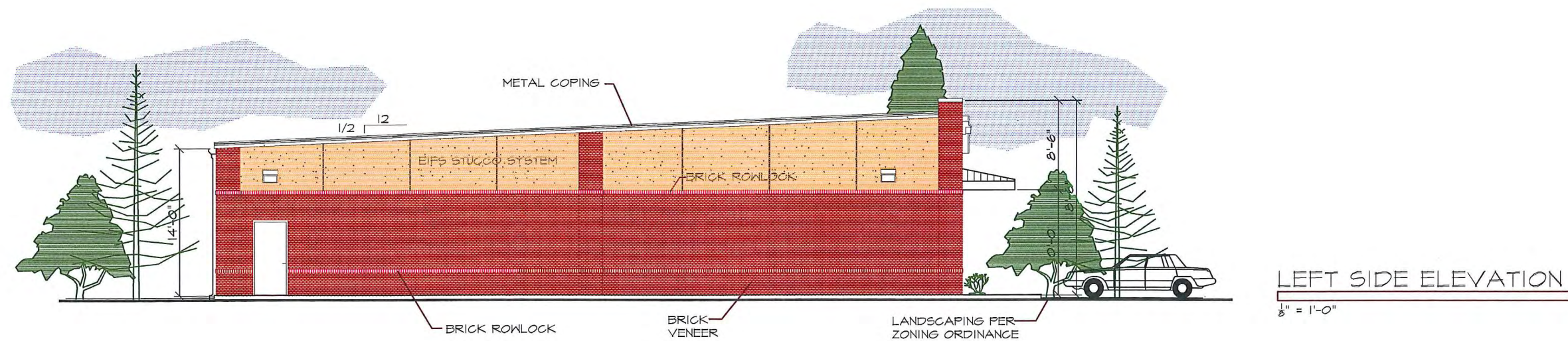
REVISIONS:

THESE DOCUMENTS ARE PROVIDED AS A CONSTRUCTION DOCUMENT TEMPLATE FOR THIS BUILDING TYPE. THESE DRAWINGS MUST BE REVIEWED AND ADAPTED BY A LICENSED ARCHITECT AND ENGINEER TO COMPLY WITH THE REQUIREMENTS OF ALL FEDERAL, STATE AND LOCAL AUTHORITIES FOR SITE SPECIFIC PROJECTS. ALL PROJECTS MUST BE APPROVED BY DOLLAR GENERAL PRIOR TO START OF CONSTRUCTION.

STORE NUMBER
STREET ADDRESS
CITY-STATE

DOLLAR GENERAL
PROTOTYPE CRITERIA SET PLAN
70'-0"x130'-0" 9,100 SF PROTOTYPE "E"
ARCHITECTURAL AND ENGINEERING DEPARTMENT (615) 855-4753
ETSPLANS@DOLLARGENERAL.COM

DATE:
JANUARY 17, 2014
DRAWING TITLE:
EXTERIOR ELEVATIONS
DRAWN BY - CHECKED BY:
CASCO/CASCO
SHEET NO.:
A02



PRELIMINARY ELEVATIONS SHOWING BRICK/EIFS EXTERIOR LOOK
FOR DOLLAR GENERAL STORE, JOHN SEVIER HIGHWAY AT CIRCLE OAK DRIVE

4-H-15-UR
Revised: 3/24/2015