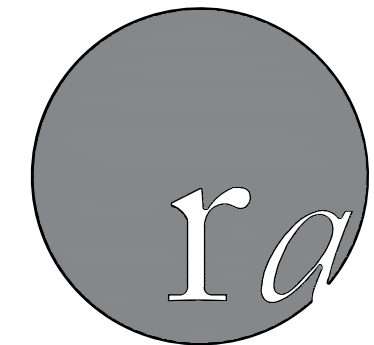


# CHAPMAN STORAGE



**randolph  
architecture**

9724 kingston pike  
suite 305 B  
knoxville, tn 37922  
v: 865.357.3750  
f: 865.357.3746

105 EAST HENDRON CHAPEL ROAD | KNOXVILLE, TN 37920

# RANDOLPH ARCHITECTURE

## PROJECT INFORMATION

PROJECT NAME:  
CHAPMAN STORAGE  
105 EAST HENDRON CHAPEL ROAD  
KNOXVILLE TN, 37920

PROJECT CONTACT PERSON:  
MARK RANDOLPH, AIA  
RANDOLPH ARCHITECTURE  
9724 KINGSTON PIKE  
SUITE 305 B  
KNOXVILLE, TN 37922  
PHONE (865) 357-3750  
FAX (865) 357-3746

JURISDICTION:  
KNOX COUNTY CODES ADMINISTRATION & INSPECTION  
MR. ROY BRADEN, DEPT. HEAD  
CITY COUNTY BUILDING | ROOM 547  
400 MAIN STREET.  
KNOXVILLE, TN 37902  
PHONE (865) 215-2335  
FAX (865) 215-4255

APPLICABLE CODES:  
INTERNATIONAL BUILDING CODE 2012  
INTERNATIONAL MECHANICAL CODE 2012  
INTERNATIONAL PLUMBING CODE 2012  
INTERNATIONAL FIRE CODE 2012  
INTERNATIONAL FUEL GAS CODE 2012  
INTERNATIONAL PROPERTY MAINTENANCE CODE 2012  
INTERNATIONAL ENERGY CONSERVATION CODE 2012  
NFPA 101 LIFE SAFETY CODE 2012  
NFPA 70 NATIONAL ELECTRICAL CODE 2011  
ACCESSIBLE AND USABLE BUILDINGS AND FACILITIES ICC  
A117.1-2009 ANSI AMERICAN NATIONAL STANDARD

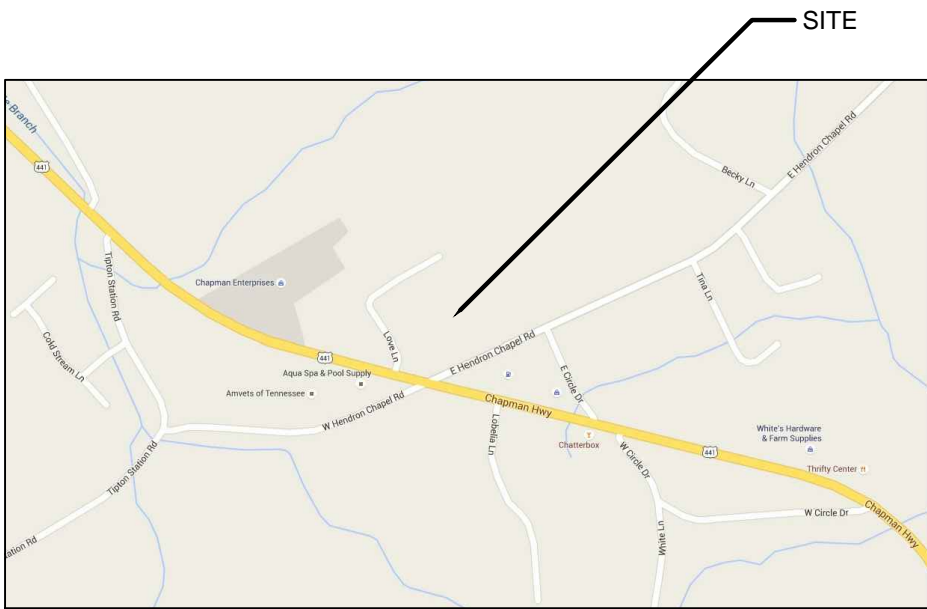
TYPE OF CONSTRUCTION:  
TYPE II B (IBC 2012)  
NON-SPRINKLERED

ZONING:  
TYPE - PC/GA  
LOT AREA - NO MINIMUM REQUIRED  
SET BACKS - 20'-0" FRONT ROAD  
5'-0" SIDE YARD  
16'-0" (ONE STORY) REAR YARD  
20'-0" (TWO STORIES)

## FIRE RESISTANCE RATING REQUIREMENTS

FIRE RESISTANCE RATING REQUIREMENTS FOR BUILDING ELEMENTS (HOURS) FROM TABLE 601, IBC 2006 FOR TYPE II-B	
STRUCTURAL FRAME	0
BEARING WALLS	
EXTERIOR	0
INTERIOR	0
NON BEARING WALLS/PARTITIONS	
EXTERIOR	0
INTERIOR	0
FLOOR CONSTRUCTION	0
ROOF CONSTRUCTION	0

## VICINITY MAP



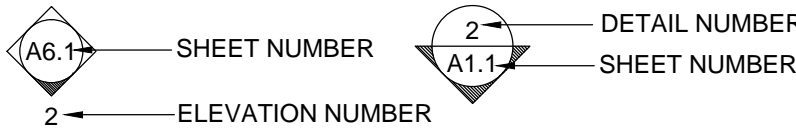
## ABBREVIATIONS

A.F.F. ALT. ALUM. ARCH. A.C.T. ASPH. B.F. BSMT. B.M. BLDG. BLK. BRG. C.B. C.J. CH.B. CLG. CLOS. CLR. COL. COMP. CONC. CONST. C.M.A. C.T. DTL. DIA. DN. DWG. D.F. D.S. EA. E.F. ELEC. E.W.A. ELEV. EXIST. EXT. E.J. F.E. FL. F.D. FT. FTG. GALV. G.A. GYP. H.B. H.C.WD. HDW. HGT. H.A. I.D. IN. INV. JAN. JST. LAV. LB. M.H. MAX. MECH.	ABOVE FINISH FLOOR ALTERNATE ALUMINUM ARCHITECTURAL ACOUSTICAL TILE ASPHALT BOTTOM FACE BASEMENT BENCHMARK BUILDING BLOCK BEARING CATCH BASIN CONTROL JOINT CHALK BOARD CEILING CLOSET CLEAR COLUMN COMPOSITION CONCRETE CONSTRUCTION CONCRETE MASONRY UNIT CERAMIC TILE DETAIL DIAMETER DOWN DRAWING DRINKING FOUNTAIN DOWNSPOUT EACH EACH FACE ELECTRICAL ELECTRIC WATER COOLER ELEVATION EXISTING EXPANSION JOINT FIRE EXTINGUISHER FLOOR FLOOR DRAIN FOOT FOOTING GALVANIZED IRON GAUGE GYPSUM HOSE BIB HOLLOW CORE WOOD HARDWARE HEIGHT HOLLOW METAL INSIDE DIAMETER INCH INVERT JANITOR JOIST LAVATORY POUND MANNHOLE MAXIMUM MECHANICAL	MTL. MG. MFG. MIN. MISC. N.I.C. N.T.S. NO.# O.C. O.D. P. PLAS. PLAS. LAM. PLYWD. PTD. RAD. R.D. RINF. REQD RS. RM. R.O. RB.T. SCHD. S.C.WD. SECT. SHT. SIM. SPECS. SQ.FT. STD. STL. STOR. S.D. SUSP. SQ. T.B. THOLD TLT. TDS. T.F. TYP. U. V.I.F. V.S. VOL. V.A. VERT. WSCT. W.C. W.H. WPFG. W.F. WDW. WD. W/ W.W.F. W.W.M. L. C O	METAL MANUFACTURING MANUFACTURER MINIMUM MISCELLANEOUS NOT IN CONTRACT NOT TO SCALE NUMBER ON CENTER OUTSIDE DIAMETER PLATE PLASTIC PLASTIC LAMINATE PLYWOOD PAINTED RADIUS ROOF DRAIN REINFORCING REQUIRED RISER ROOM ROUGH OPENING RUBBER TILE SCHEDULE SOLID CORE WOOD DOOR SECTION SHEET SIMILAR SPECIFICATIONS SQUARE FEET STANDARD STEEL STORAGE STORM DRAIN SUSPENDED SQUARE TACK BOARD THRESHOLD TOILET TREADS TOP FACE TYPICAL URINAL VERIFY IN FIELD VENT STACK VOLUME VINYL TILE VERTICAL WAINSCOT WATER CLOSET WATER HEATER WATERPROOFING WIDE FLANGE WINDOW WOOD WITH WELDED WIRE FABRIC WELDED WIRE MESH ANGLE CHANNEL ROUND
--	---	--	--

## LIST OF DRAWINGS

CVR	COVERSHEET
<b>CIVIL</b>	
C1.00	SURVEY/TOPOGRAPHY PLAN
C1.01	ZONING PLAN
C1.02	SITE MASTER PLAN
<b>LANDSCAPE</b>	
L1.01	LANDSCAPE PLAN; LANDSCAPE DETAILS; PLANT SCHEDULE
<b>ARCHITECTURAL</b>	
A1.01	FLOOR PLANS - BUILDINGS A AND B
A1.02	FLOOR PLANS - BUILDINGS C AND D
A1.03	FLOOR PLANS - BUILDINGS E AND F
A4.01	EXTERIOR ELEVATIONS

## GRAPHIC SYMBOLS



## MATERIALS LEGEND

SOIL IN SECTION	PLYWOOD
RIGID INSULATION	FINISH WOOD
BATT INSULATION	WOOD BLOCKING
CONCRETE BLOCK	CRUSHED STONE
CONCRETE IN SECTION	METAL IN SECTION
BRICK	GYP. BD, PLASTER, OR CONCRETE

CHAPMAN STORAGE

105 E. HENDERON CHAPEL ROAD  
KNOXVILLE, TENNESSEE 37920

NOT FOR  
CONSTRUCTION

MPC  
SUBMITTAL

2016\_08

Issue Date 04-04-2016

Drawn Checked  
JMR RMR

Revisions

4-H-16-UR

Revised: 4/6/2016

coversheet  
**CVR**



LOT COVERAGE FOR ZONE PC

- BUILDINGS MUST NOT COVER MORE THAN 50% OF LOT - LOT COVERAGE 50%

- LOT SIZE = 219,900 SQ. FT. - PC ONLY

- 50% LOT SIZE = 109,950 SQ. FT.

- BUILDING AREA = 88,565 SQ. FT. < 109,950 SQ. FT.

NOTE: SQUARE FOOTAGES ARE REFLECTIVE OF PC ZONE AREA ONLY

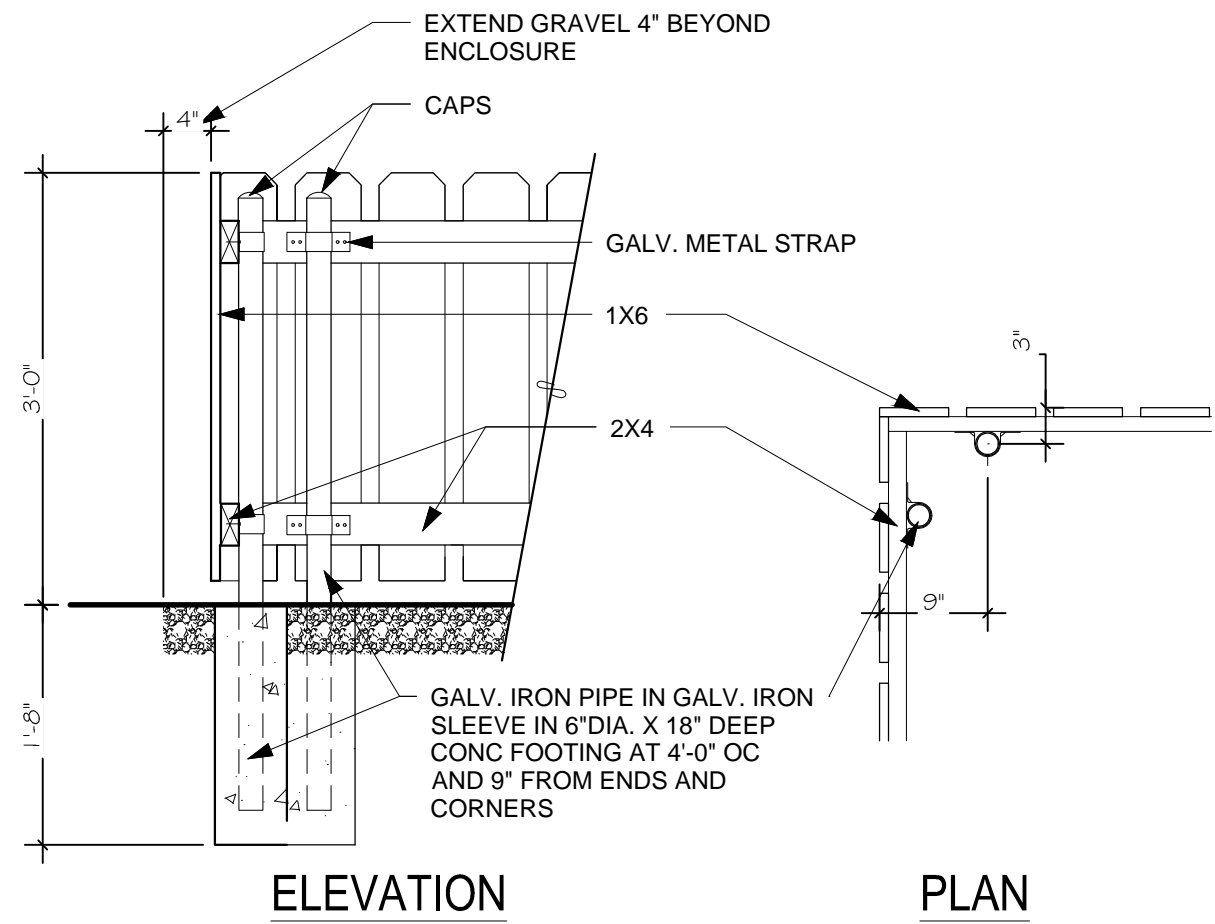
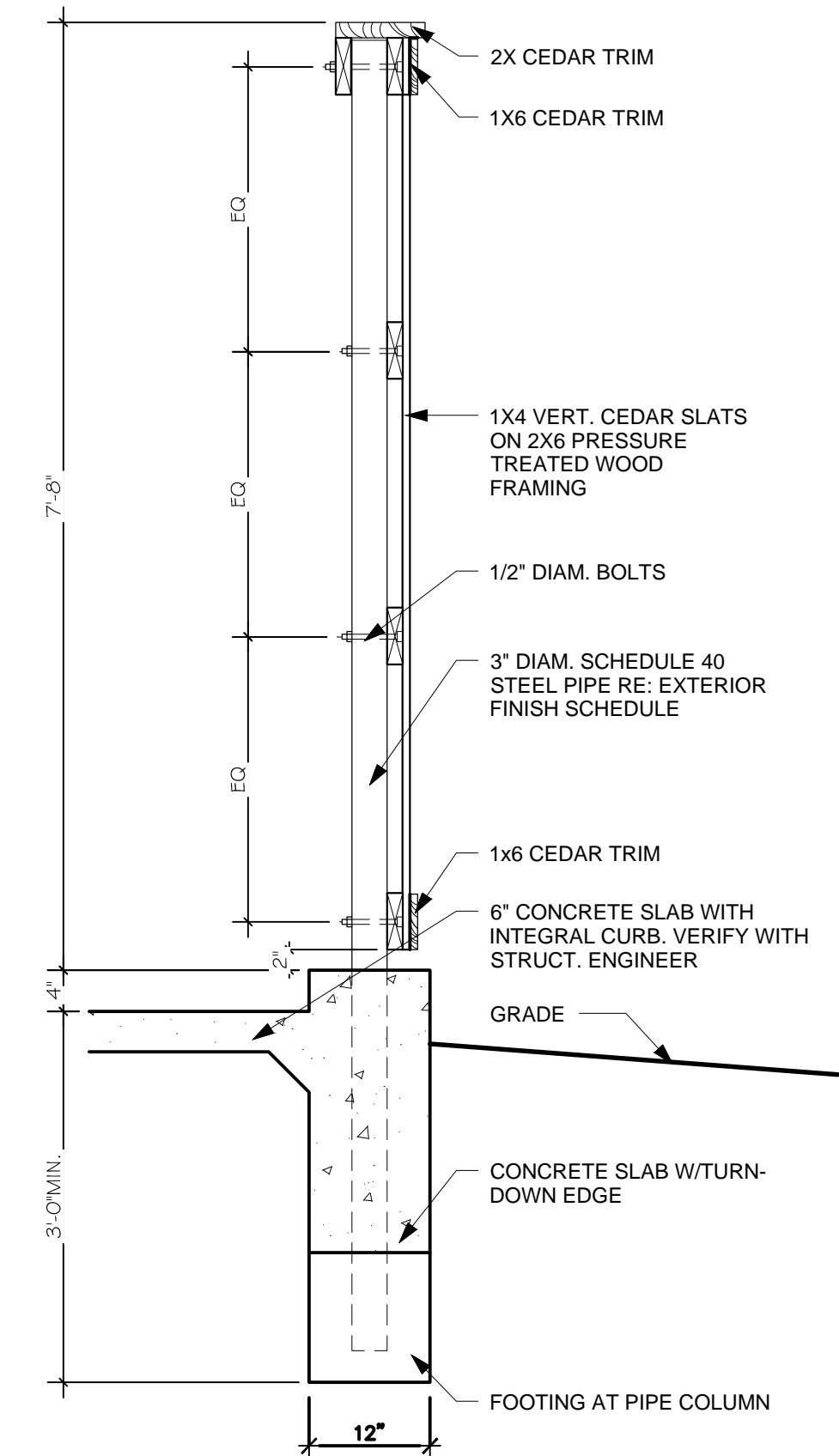
CA ZONING

- SETBACKS

- FRONT - 20'-0" ROAD

- SIDE - 5'-0" MIN

- REAR - 16'-0" ONE STORY



FENCE SECTION

4

SCALE: 3/4" = 1'-0"

FENCE ELEVATION

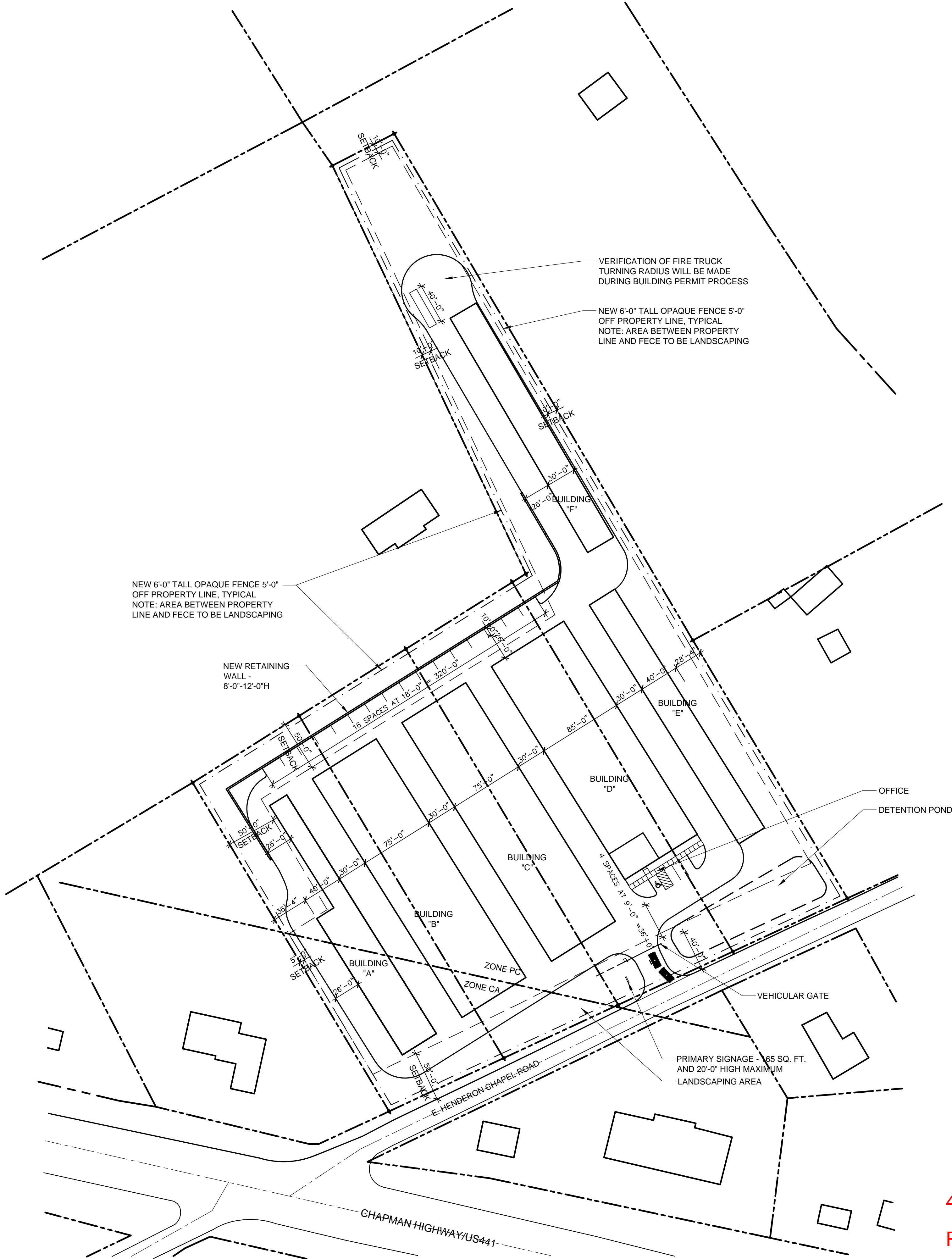
3

SCALE: 3/4" = 1'-0"

FENCE PLAN

3

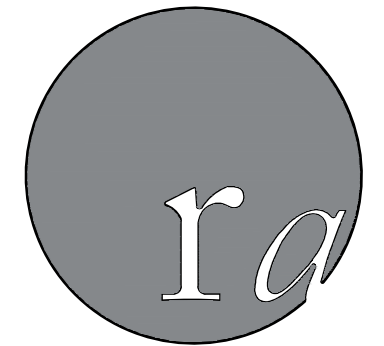
SCALE: 3/4" = 1'-0"



SITE MASTER PLAN

1

SCALE: 1" = 60'



**randolph  
architecture**

9724 kingston pike  
suite 305 B  
knoxville, tn 37922  
v: 865.357.3750  
f: 865.357.3746

NOT FOR  
CONSTRUCTION

MPC  
SUBMITTAL

2016\_08

CHAPMAN STORAGE  
105 E. HENDERSON CHAPEL ROAD  
KNOXVILLE, TENNESSEE 37920

Issue Date 04-04-2016

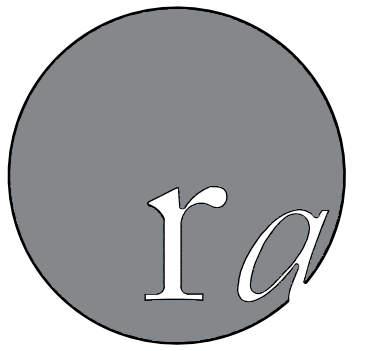
Drawn JMR  
Checked RMR

Revisions

4-H-16-UR

Revised: 4/6/2016

c1.02  
site plan



**r a n d o l p h  
a r c h i t e c t u r e**

9724 kingston pike  
suite 305 B  
knoxville, tn 37922  
v: 865.357.3750  
f: 865.357.3746

NOT FOR  
CONSTRUCTION

MPC  
SUBMITTAL

2016\_08

CHAPMAN STORAGE

105 E. HENDERON CHAPEL ROAD  
KNOXVILLE, TENNESSEE 37920

Issue Date 04-04-2016

Drawn JMR Checked RMR

Revisions

4-H-16-UR

Revised: 4/6/2016

c2.01

lighting plan

## NOTE

1. LED POLE LIGHTING AND WALL MOUNTED EXTERIOR LED FIXTURES WILL BE INSTALLED. LIGHTING AND GLARE SHALL BE DEFLECTED, SHADED AND FOCUSED AWAY FROM ALL OTHER PROPERTY.

## LIGHTING PLAN

SCALE: 1"=60'

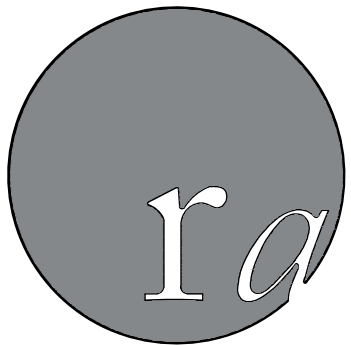
1











**r a n d o l p h**  
**a r c h i t e c t u r e**

9724 kingston pike  
suite 305 B  
knoxville, tn 37922  
v: 865.357.3750  
f: 865.357.3746

NOT FOR  
CONSTRUCTION

MPC  
SUBMITTAL

2016\_08

CHAPMAN STORAGE

105 E. HENDERON CHAPEL ROAD  
KNOXVILLE, TENNESSEE 37920

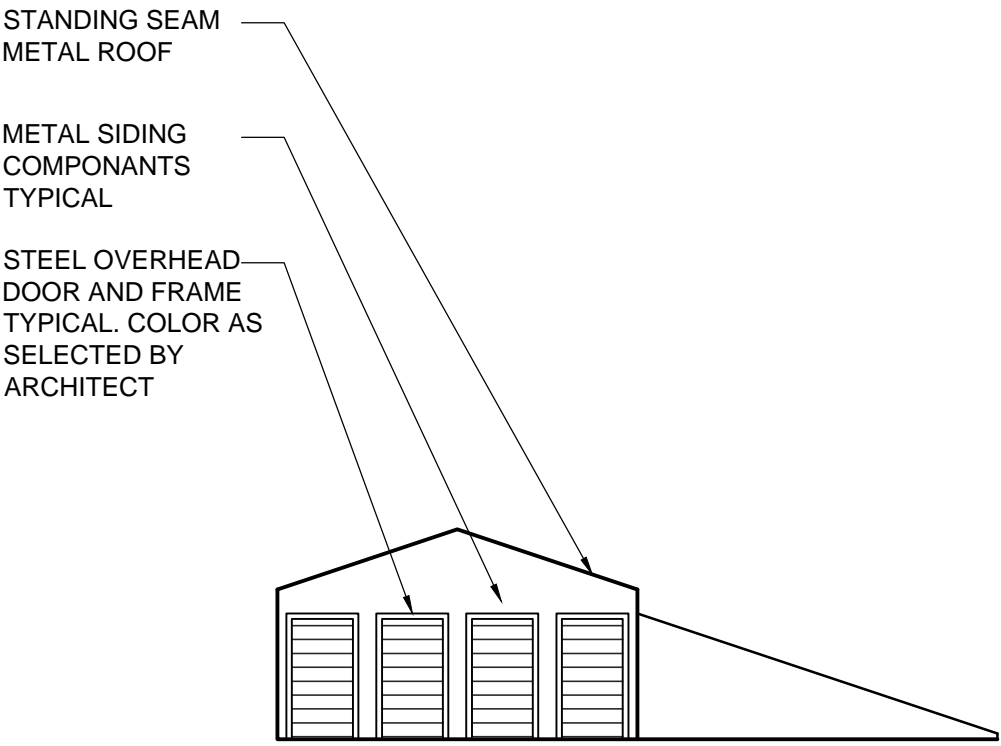
Issue Date 04-04-2016

Drawn JMR  
Checked RMR

Revisions

4-H-16-UR  
Revised: 4/6/2016

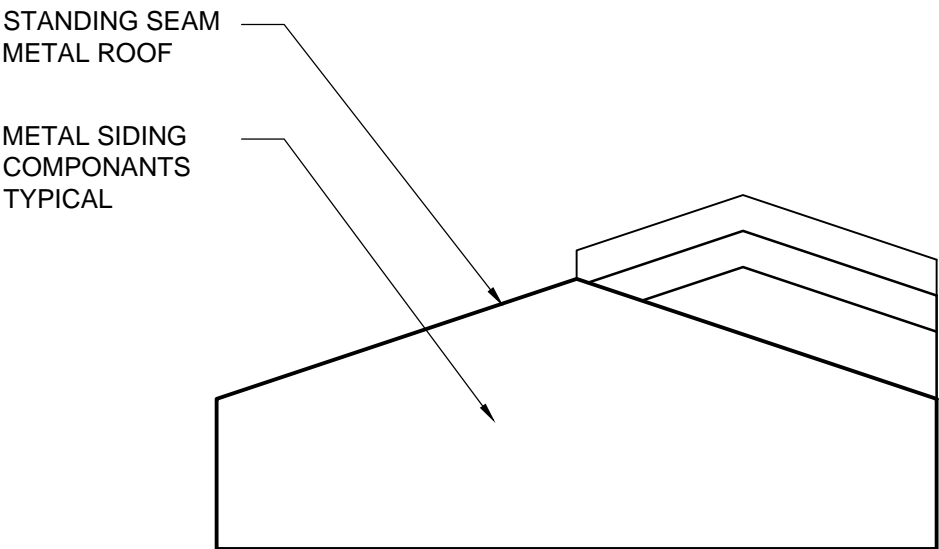
a4.01  
exterior elevations



ELEVATION - BUILDING A

SCALE: 3/32"=1'-0"

4



ELEVATION - BUILDING A

SCALE: 3/32"=1'-0"

3

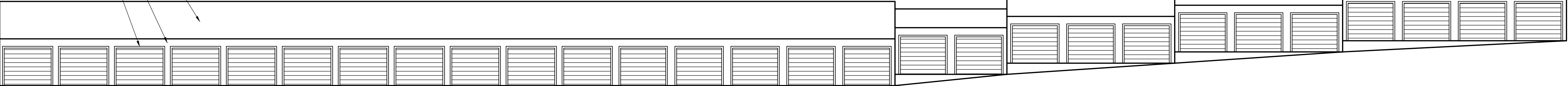
NOTES

- BUILDINGS B,C,D,E,AND F ARE SIMILAR TO BUILDING A .
- BUILDING MATERIALS AND COMPNANTS WILL BE CONSISTANT

STANDING SEAM  
METAL ROOF

METAL SIDING  
COMPONANTS  
TYPICAL

STEEL OVERHEAD  
DOOR AND FRAME  
TYPICAL. COLOR AS  
SELECTED BY  
ARCHITECT



ELEVATION - BUILDING A

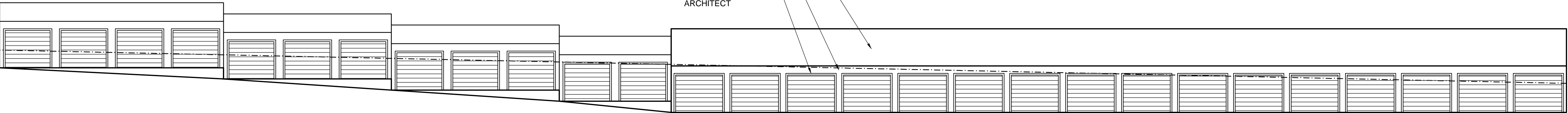
SCALE: 3/32"=1'-0"

2

STANDING SEAM  
METAL ROOF

METAL SIDING  
COMPONANTS  
TYPICAL

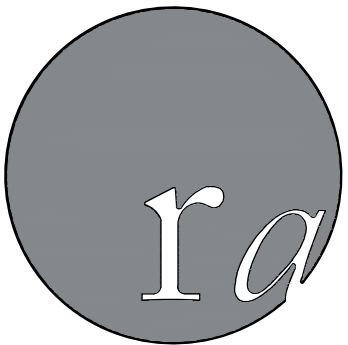
STEEL OVERHEAD  
DOOR AND FRAME  
TYPICAL. COLOR AS  
SELECTED BY  
ARCHITECT



ELEVATION - BUILDING A

SCALE: 3/32"=1'-0"

1



**randolph  
architecture**

9724 kingston pike  
suite 305 B  
knoxville, tn 37922  
v: 865.357.3750  
f: 865.357.3746

NOT FOR  
CONSTRUCTION

MPC  
SUBMITTAL

2016\_08

CHAPMAN STORAGE

105 E. HENDERON CHAPEL ROAD  
KNOXVILLE, TENNESSEE 37920

Issue Date 04-04-2016

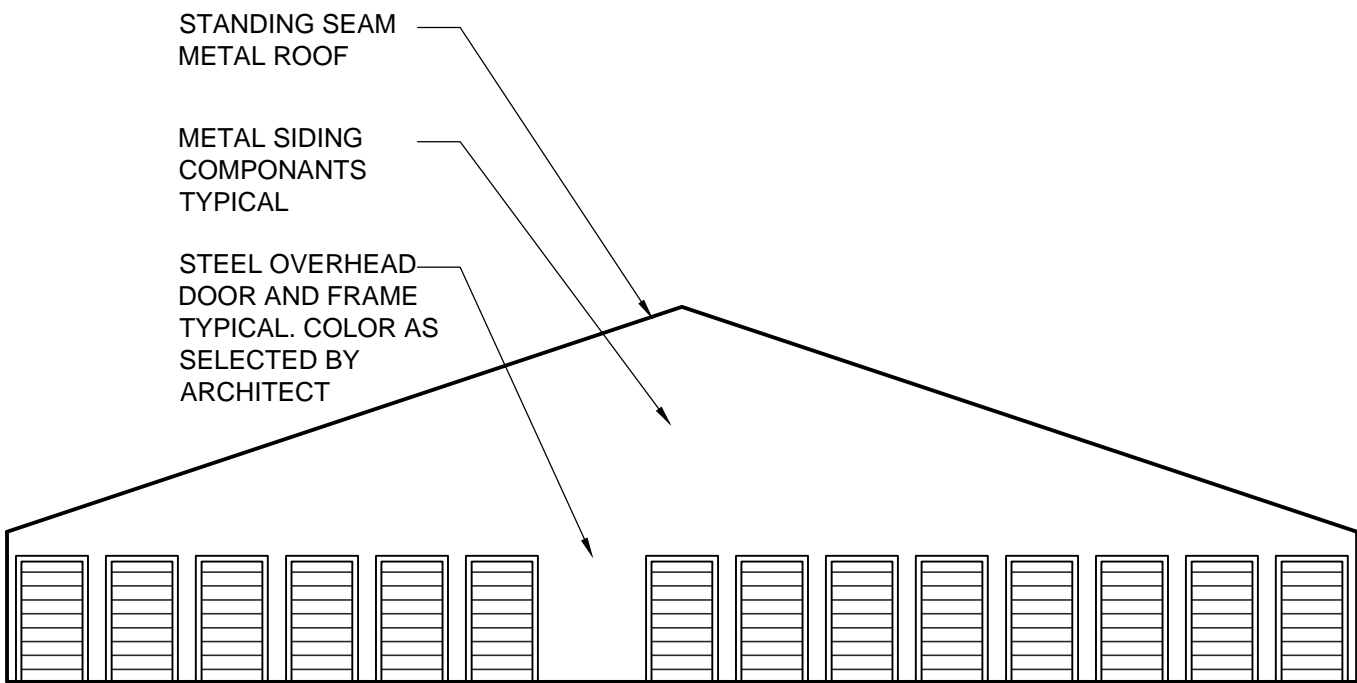
Drawn JMR  
Checked RMR

Revisions

4-H-16-UR  
Revised: 4/6/2016

a4.02

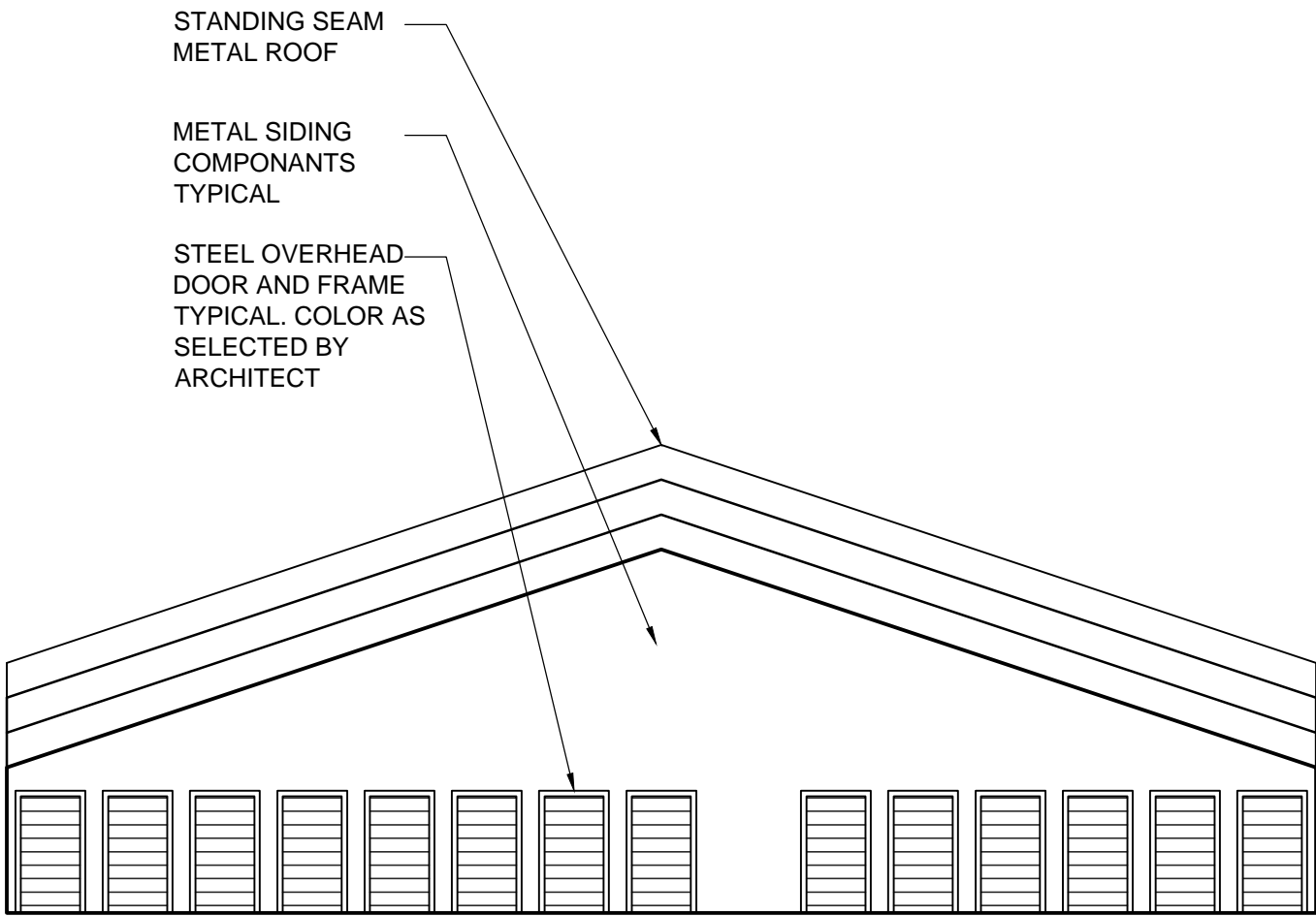
exterior elevations



ELEVATION - BUILDING B

SCALE: 3/32"=1'-0"

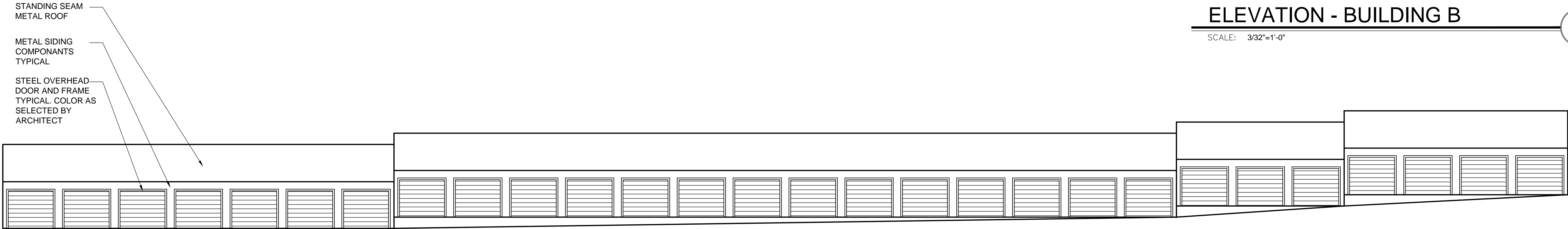
4



ELEVATION - BUILDING B

SCALE: 3/32"=1'-0"

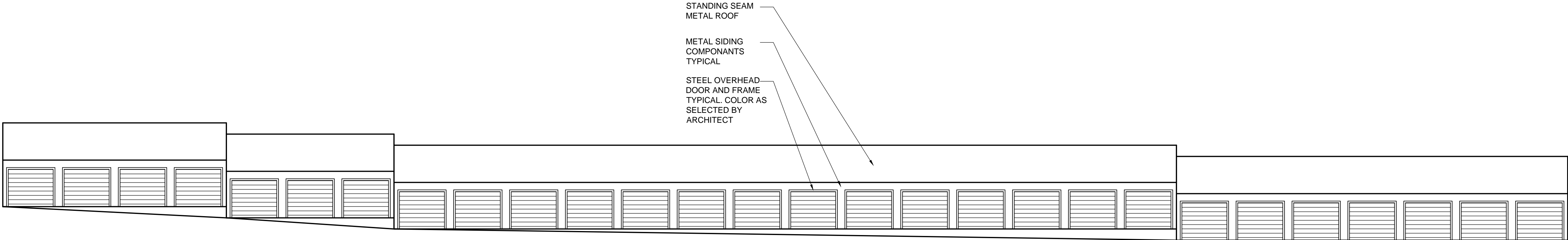
3



ELEVATION - BUILDING B

SCALE: 3/32"=1'-0"

2



ELEVATION - BUILDING B

SCALE: 3/32"=1'-0"

1

NOTES

- BUILDINGS B,C,D,E,AND F ARE SIMILAR TO BUILDING A .
- BUILDING MATERIALS AND COMPNANTS WILL BE CONSISTANT