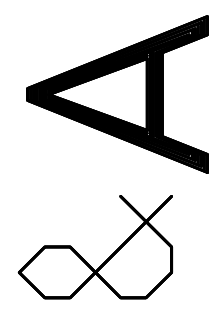


# DAYCARE RENOVATION DEVELOPMENT

8537 ASHEVILLE HIGHWAY  
KNOXVILLE, TENNESSEE 37924

DESIGN DEVELOPMENT DOCUMENTS 12 APR 24

**R. LEN JOHNSON & ASSOCIATES**  
Architects, Construction Analysts & Inspectors

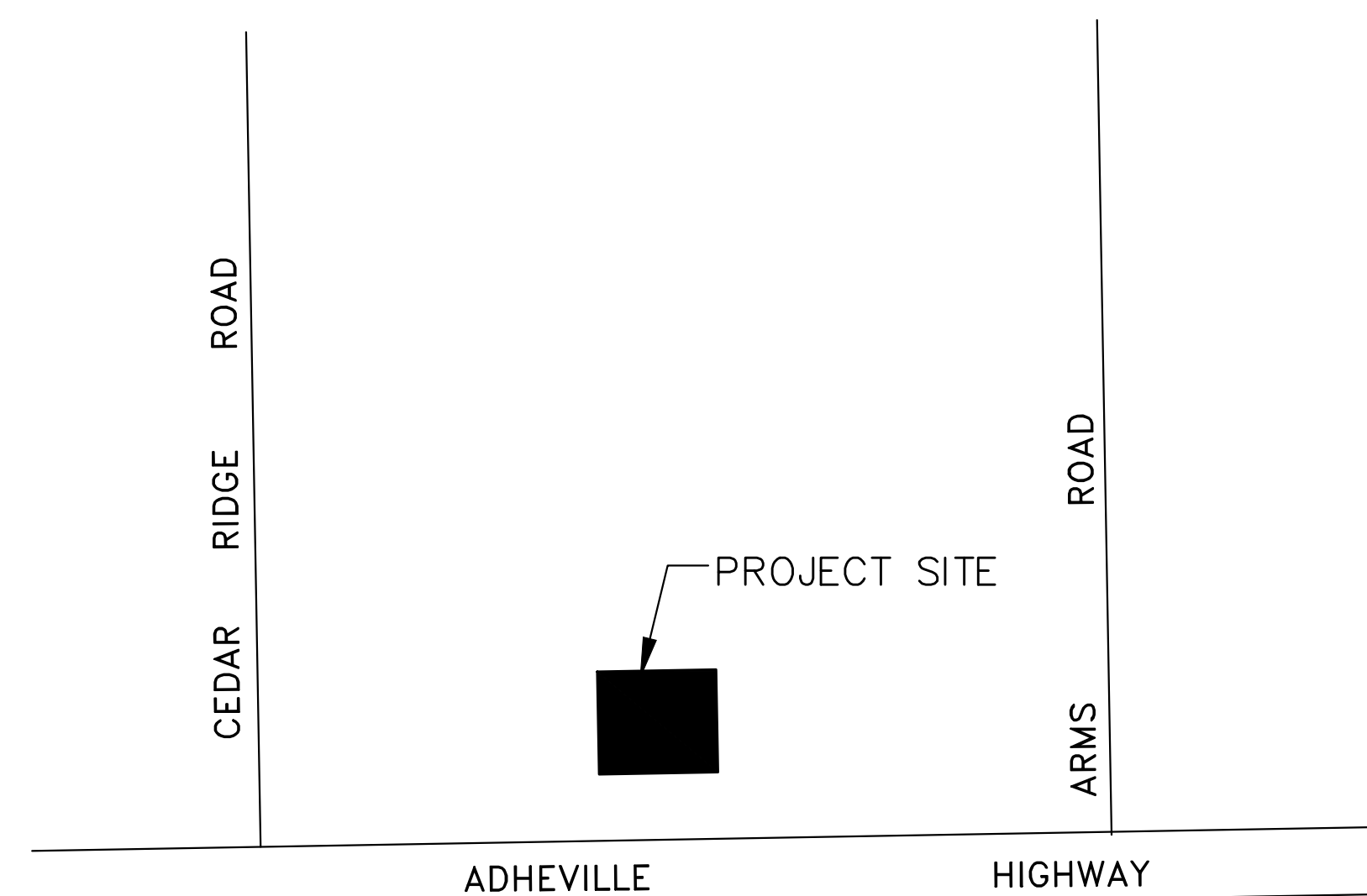


724 TAYLOR ROAD, KNOXVILLE, TN 37920 (VOL) 573-1148

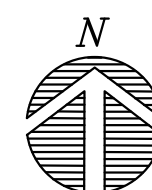
## MATERIAL LEGEND

	EARTH		WOOD - ROUGH
	CRUSHED STONE		WOOD - FINISH
	CONCRETE		PLYWOOD
	MASONRY BLOCK		GLASS
	BRICK		ASPHALT
	FIRE BRICK		STRUCTURAL TILE
	NATURAL STONE		STEEL - LG. SCALE
	PRECAST CONCRETE		RIGID INSULATION
	PLASTER		BATT INSULATION
	MARBLE		CAULK
	TERAZZO		STEEL - SM. SCALE
	CERAMIC TILE		

## SITE LOCATION



LOCATION PLAN  
N. T. S.



## DRAWING INDEX

TS-1 TITLE SHEET W/ SITE LOCATION MAP

### ARCHITECTURAL

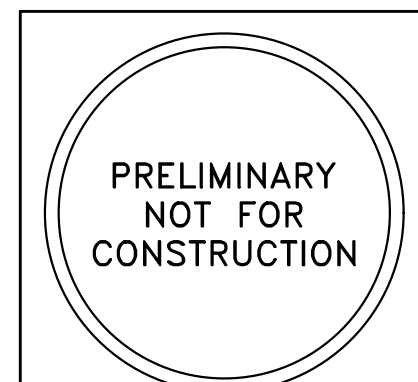
A100 ARCHITECTURAL SITE PLAN  
A101 LOWER FLOOR PLAN  
A102 LIFE SAFETY PLAN

## SYMBOLS

	SECTION NUMBER ON SHEET NUMBER
	DIRECTION OF VIEW
	ELEVATION NUMBER ON SHEET NUMBER
	SPACE NUMBER
	FINISH LEGEND (SEE SCHEDULE)
	OFFICE SPACE NAME
	WINDOW TYPE
	REFERS TO NUMBER OF DOOR IN SPACE

## PROJECT DATA

ARCHITECT'S FILE NO. 24016  
CONSTRUCTION TYPE: TYPE III B UNPROTECTED SPRINKLED  
OCCUPANCY: EDUCATION "E"  
NO. STORIES & HEIGHT: ONE STORY HGT = 35'  
BUILDING AREA: 9,287 S.F.  
DAYCARE AREA: 1,945 S.F.  
OCCUPANT LOAD: 1,945/35 SF/OCC.= 56  
APPLIED CODES: SEE SHEET A102



SET NO.  
SHEET NO. 1 OF 4

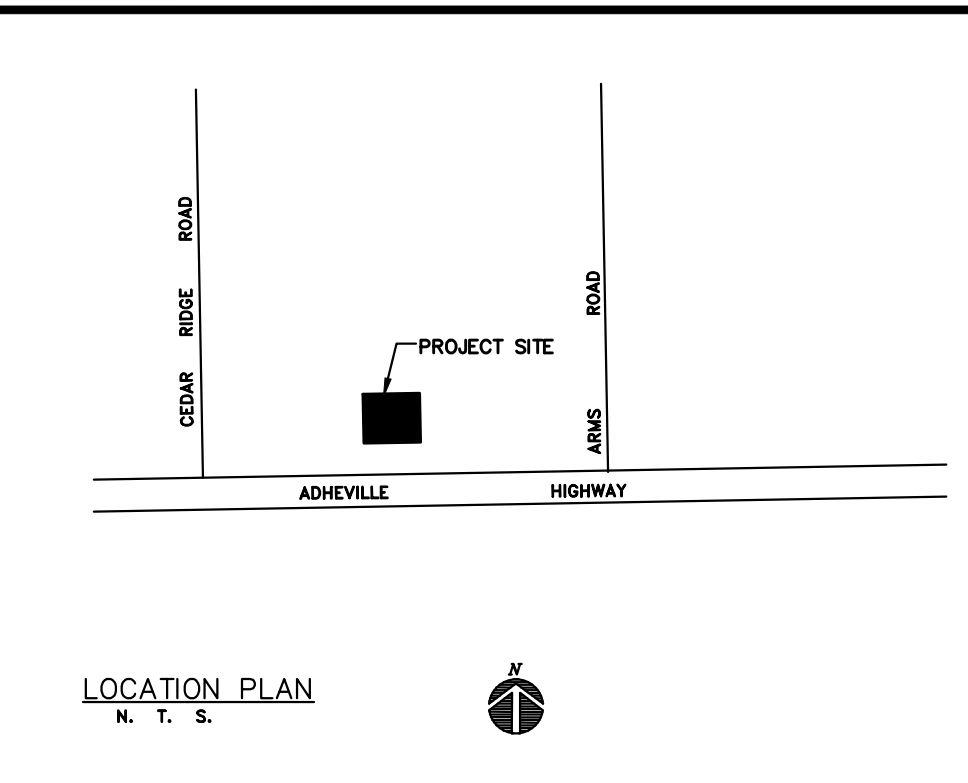
R. LEN JOHNSON & ASSOCIATES

Submitted by: \_\_\_\_\_

MRS. ALEXIS PROFFITT, TENANT  
8537 ASHEVILLE HIGHWAY  
KNOXVILLE, TENNESSEE 37924

Approved by: \_\_\_\_\_

5-A-24-UR  
Revised: 4/19/2024



DAYCARE RENOVATION  
**DEVELOPMENT**  
 8537 ASHEVILLE HWY  
 KNOXVILLE, TN. 37924  
**MRS. ALEXIS PROFFITT**  
 24016

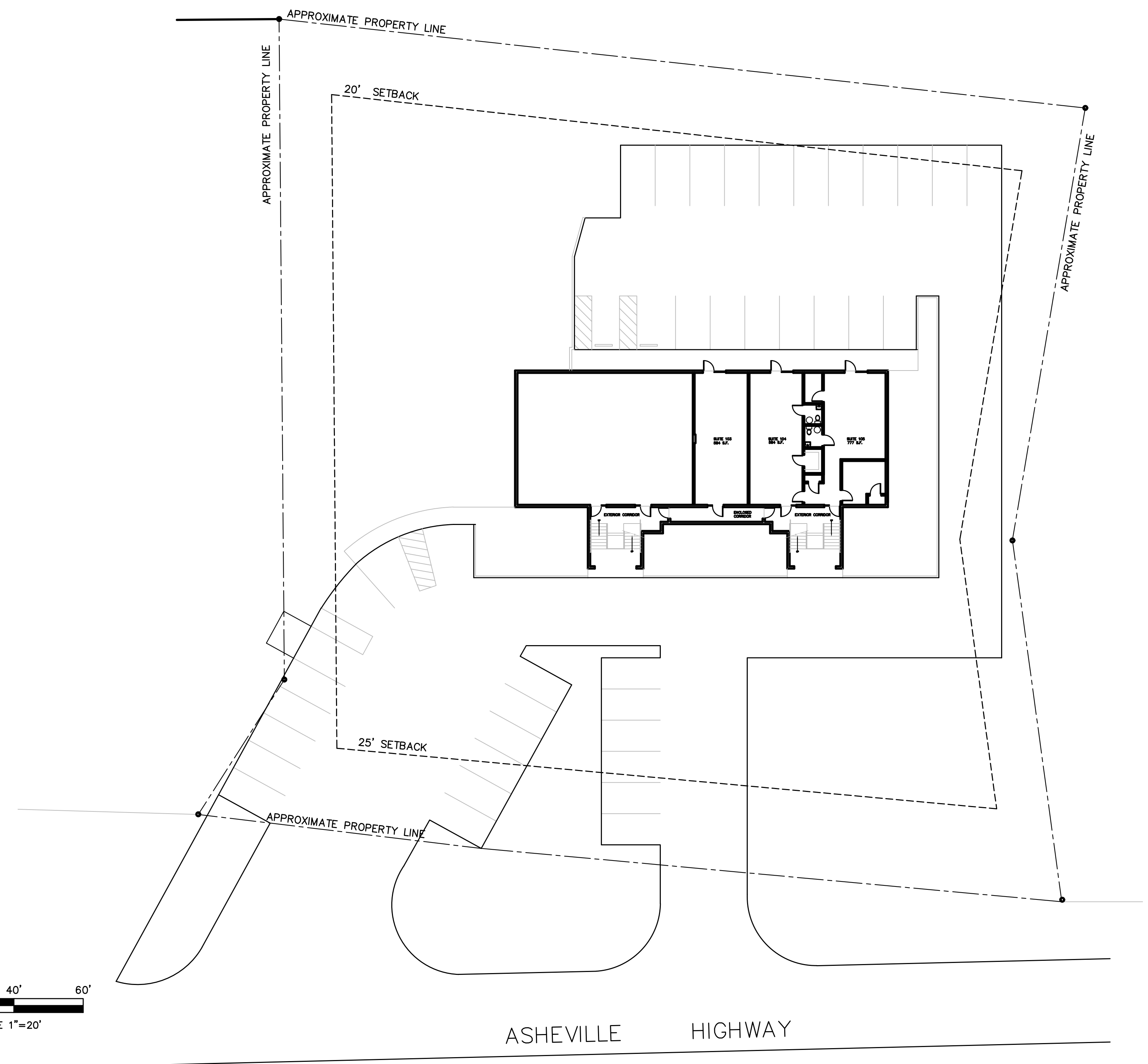
PRELIMINARY  
 NOT FOR  
 CONSTRUCTION

**R. LEN JOHNSON & ASSOCIATES**  
 Architects, Construction Analysts & Inspectors  
**J & A**  
 724 TAYLOR ROAD, KNOXVILLE, TN 37920 (VOL.) (865) 573-1148

Drawing Description.....  
**ARCHITECTURAL  
 SITE  
 PLAN**

REVISIONS	
No.	Date

Plot Scale 1" = 20'  
 Dwn. RLJ  
 Appd. RLJ  
 Project No. 24016  
 Date xx/xx/xx  
 Sh. No. 2  
 of 4

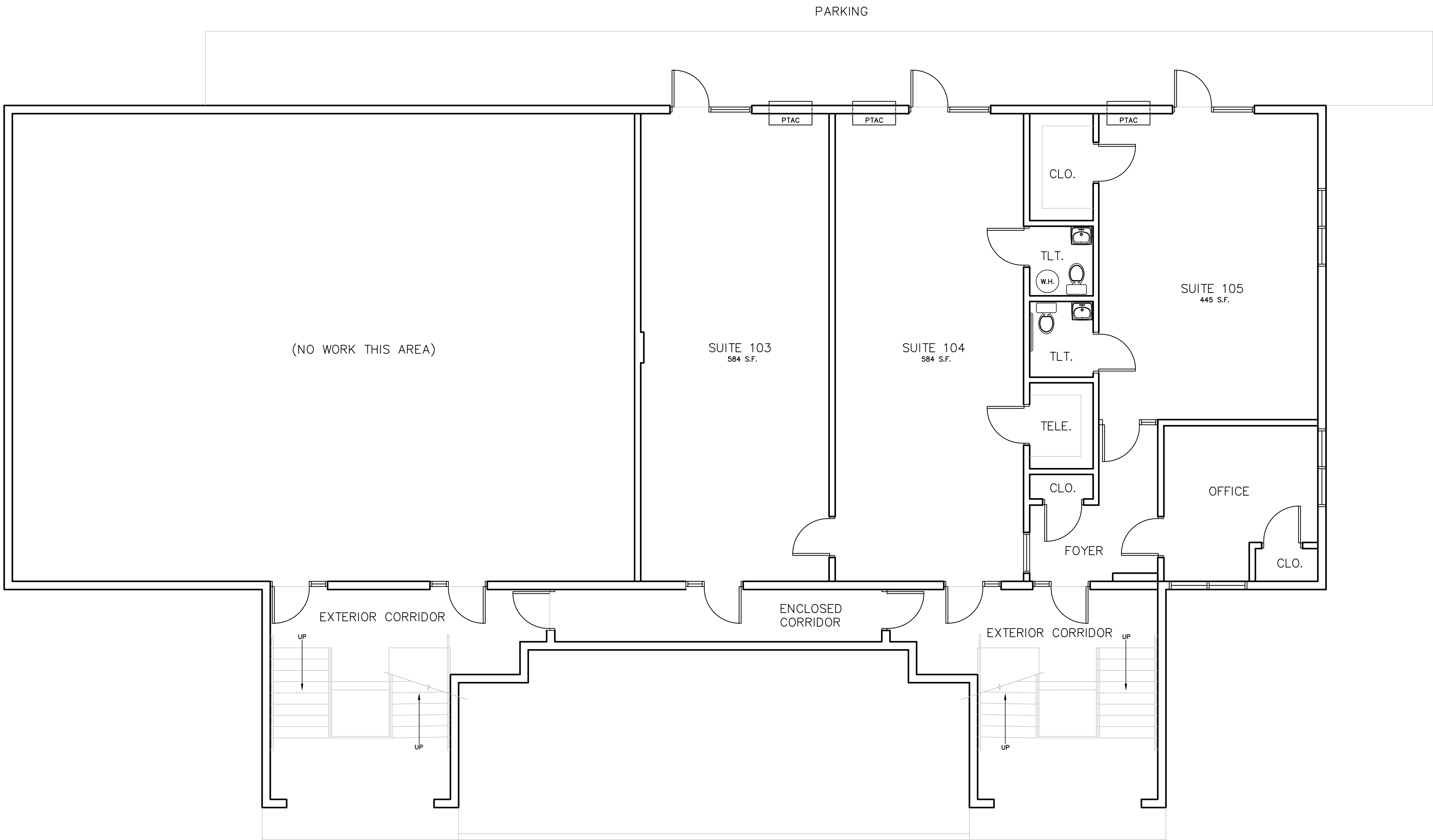


ZONE OB  
 FRONT SETBACK = 25'  
 SIDE SETBACK = 15' MIN.  
 REAR SETBACK = 20'  
 LOT AREA = 57935 S.F.  
 EXISTING = 5043 S.F. DAYCARE = 1457 S.F.  
 BUILDING + PAVING = 25,488 S.F.  
 PARCEL#: 062 210  
 8537 ASHEVILLE HIGHWAY, CITY 37924



**5-A-24-UR**  
 Revised: 4/19/2024

**A100**  
 of 3



PARKING

(NO WORK THIS AREA)

SUITE 103  
584 S.F.

SUITE 104  
584 S.F.

SUITE 105  
445 S.F.

OFFICE

FOYER

TELE.

TLT.

W.H.

TLT.

CLO.

PTAC

PTAC

PTAC

EXTERIOR CORRIDOR

ENCLOSED CORRIDOR

EXTERIOR CORRIDOR

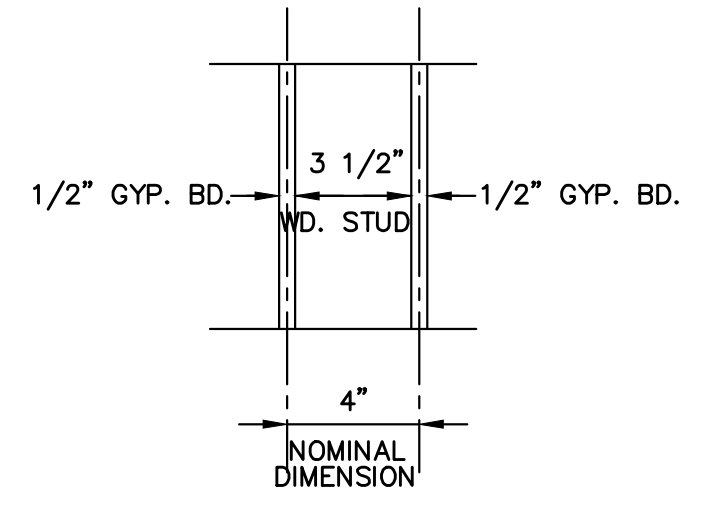
UP

UP

UP

UP

1 LOWER FLOOR PLAN  
A101 SCALE: 1/4" = 1'-0"



DIMENSION STANDARD  
SCALE: N.T.S.

5-A-24-UR  
Revised: 4/19/2024

DAYCARE RENOVATION  
**DEVELOPMENT**  
8637 ASHEVILLE HWY  
KNOXVILLE, TN. 37924  
MRS. ALEXIS PROFFITT  
24016

PRELIMINARY  
NOT FOR  
CONSTRUCTION

**R. LEN JOHNSON & ASSOCIATES**  
Architects, Construction Analysts & Inspectors  
**J & A**  
724 TAYLOR ROAD, KNOXVILLE, TN 37920 (VOL) 573-1148

Drawing Description.....  
**LOWER FLOOR PLAN**

REVISIONS	
No.	Date

Plot Scale 1" = 4'-0"  
Drn. DST  
Appd. RLJ  
Project No. 24016  
Date XX XXX XX  
Sh. No. 3  
of 4

A101  
of 3

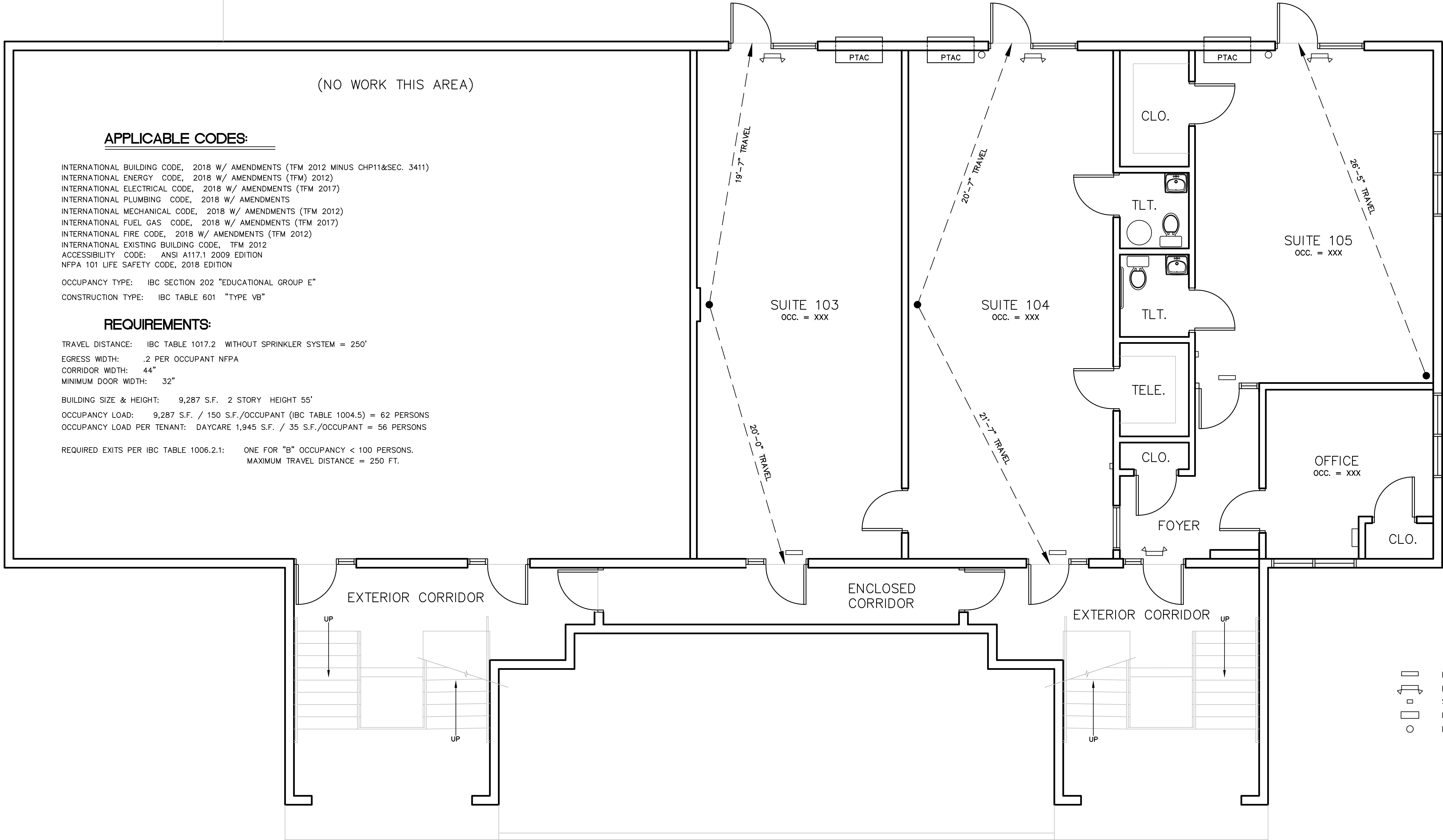


Drawing Description.....  
**LIFE SAFETY PLAN**

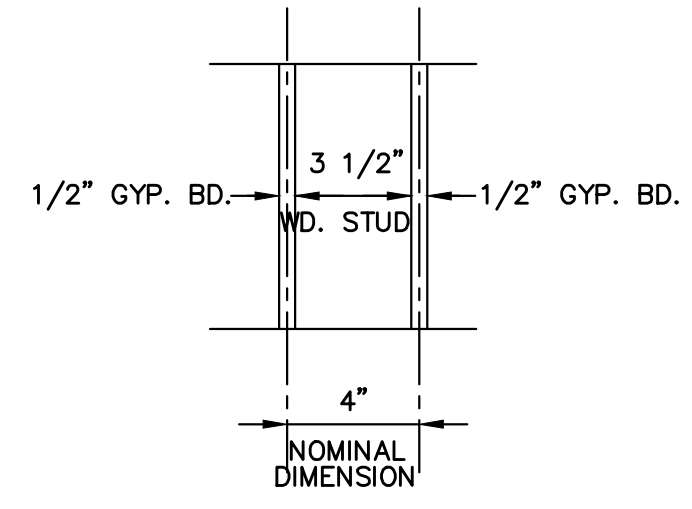
REVISIONS	
No.	Date

Plot Scale 1" = 4'-0"  
 Drn. DST  
 Appd. RLJ  
 Project No. 24016  
 Date XX XX XX  
 Sh. No. 4  
 of 4

**A102**  
 of 3



1 LIFE SAFETY PLAN  
 A102 SCALE: 1/4" = 1'-0"



**DIMENSION STANDARD**  
 SCALE: N.T.S.

5-A-24-UR  
 Revised: 4/19/2024

Legacy Childcare Center

54x38

-dotted lines are not walls- showcasing where activities take place

