

**OWNER**

Ellis Justin and Ellis Catherine  
1711 Jackson Road  
Knoxville, TN 37921  
CONTACT: Justin Ellis  
PHONE: (865) 577-1964  
FAX:  
CELLULAR:

**CONTRACTOR**

Brownlee Construction, Inc.  
3404 Henson Road  
Knoxville, TN 37921  
CONTACT: Heath Brownlee  
PHONE: (865) 588-0537  
FAX:  
CELLULAR:

**CIVIL ENGINEER**

Will Robinson & Associates  
131 Brentwood Drive  
Oak Ridge, TN 37830  
CONTACT: Will Robinson  
PHONE: (865) 389-4200  
FAX:  
CELLULAR:

**ARCHITECT**

Odle & Young Architects, Inc.  
1545 Western Avenue  
Suite 100  
Knoxville, Tennessee 37921  
CONTACT: Steve Young  
PHONE: (865) 523-8200  
FAX: (865) 523-8266  
E-MAIL: oyarchitects@comcast.net

**STRUCTURAL ENGINEER**

WTC Associates, Inc.  
3930 S. Nova Road, Suite 304  
Port Orange, FL 32127-9293  
CONTACT: Carl Taylor  
PHONE: (386) 265-4911  
FAX:  
CELLULAR:

**ELECTRICAL ENGINEER**

Hampton & Associates  
2236 Highland Springs Road  
Blaine, TN  
CONTACT: Harvey Hampton  
PHONE: (865) 828-4343  
FAX: (423) 828-8616  
CELLULAR:

**MECHANICAL ENGINEER**

High Standard Engineering  
P.O. Box 1407  
Morristown, TN  
CONTACT: Max Cook  
PHONE: (423) 587-4311  
FAX:  
CELLULAR: (423) 312-4305

**ABBREVIATIONS**

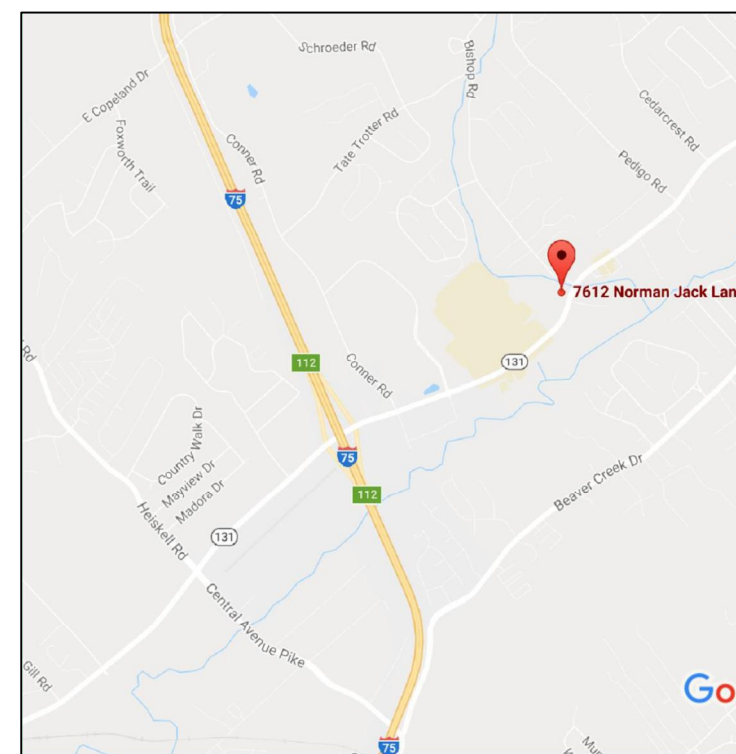
AB	ANCHOR BOLT	INSUL	INSULATION
A/C	AIR CONDITIONING	INT	INTERIOR
ACT	ACOUSTICAL CEILING TILE	JST	JOIST
AFF	ABOVE FINISHED FLOOR	MAX	MAXIMUM
ALUM	ALUMINUM	MECH	MECHANICAL
ANCH	ANCHOR	MIN	MINIMUM
BD	BOARD	MO	MASONRY OPENING
BM	BEAM	MR&B	MOISTURE RESISTANT GYP BD
C TO C	CENTER TO CENTER	MTL	METAL
CPT	CARPET	OC	ON CENTER
CJ	CONSTRUCTION JOINT	PBO	PROVIDED BY OWNER
CMU	CONCRETE MASONRY UNIT	PL	PLATE
COL	COLUMN	PRE-ENG	PRE-ENGINEERED
CONC	CONCRETE	FLAM	FLAME RESISTANT
CONSTR	CONSTRUCTION	PLYND	PLYWOOD
CONT	CONTINUOUS	PS	FULL STATION
CONTR	CONTRACTOR	PT	PRESSURE TREATED OR PAINT
CT	CERAMIC TILE	PTD	PAINTED
DET	DETAIL	PVC	POLYVINYL CHLORIDE PIPE
DF	DRINKING FOUNTAIN	RESIL	RESILIENT
DS	DOWN SPURT	RET	RETAINING
DWG	DRAWING	SHT	SHEET
EA	EACH	STL	STEEL
EL	ELEVATION	TEMP	TEMPERATURE
EPS	EXPANDED POLYSTYRENE	T & G	TONGUE AND GROOVE
EQUIP	EQUIPMENT	TOC	TOP OF CONCRETE
ENH	ELECTRIC WATER HEATER	TOF	TOP OF FOOTING
EXP	EXPOSITION OR EXPOSED	TOS	TOP OF STEEL
EXT	EXTERIOR OR EXISTING	TOW	TOP OF WALL
EXIST	EXISTING	TPH	TOILET PAPER HOLDER
FF	FINISH FLOOR/FINISH FACE	TYP	TYPICAL
FE	FIRE EXTINGUISHER	VCT	VINYL COMPOSITE TILE FLOORING
FG	FIBERGLASS	VB	VINYL BASE
FGH	FIRE HOSE CABINET	W	WITH
FLASH	FLASHING	WC	WATER CLOSET
FRP	FIBER-REINFORCED PLASTIC	WD	WOOD
GA	GUAGE	WOOD	WOOD
GB	GRAB BAR	XPS	EXTRUDED POLYSTYRENE
GYP BD	GYP/PLUM BOARD	32" x 48"	32 DEGREES, 4 MINUTES, 0 SECONDS
HARDW	HARDWOOD	Ø	DIAMETER
HT	HIGH OR HEIGHT	@	AT
HVAC	HEATING, VENTILATION & AIR CONDITIONING	&	AND
		∠	ANGLE
		CL	CENTER LINE

# New Facility for Rural Metro Corporation Station 32

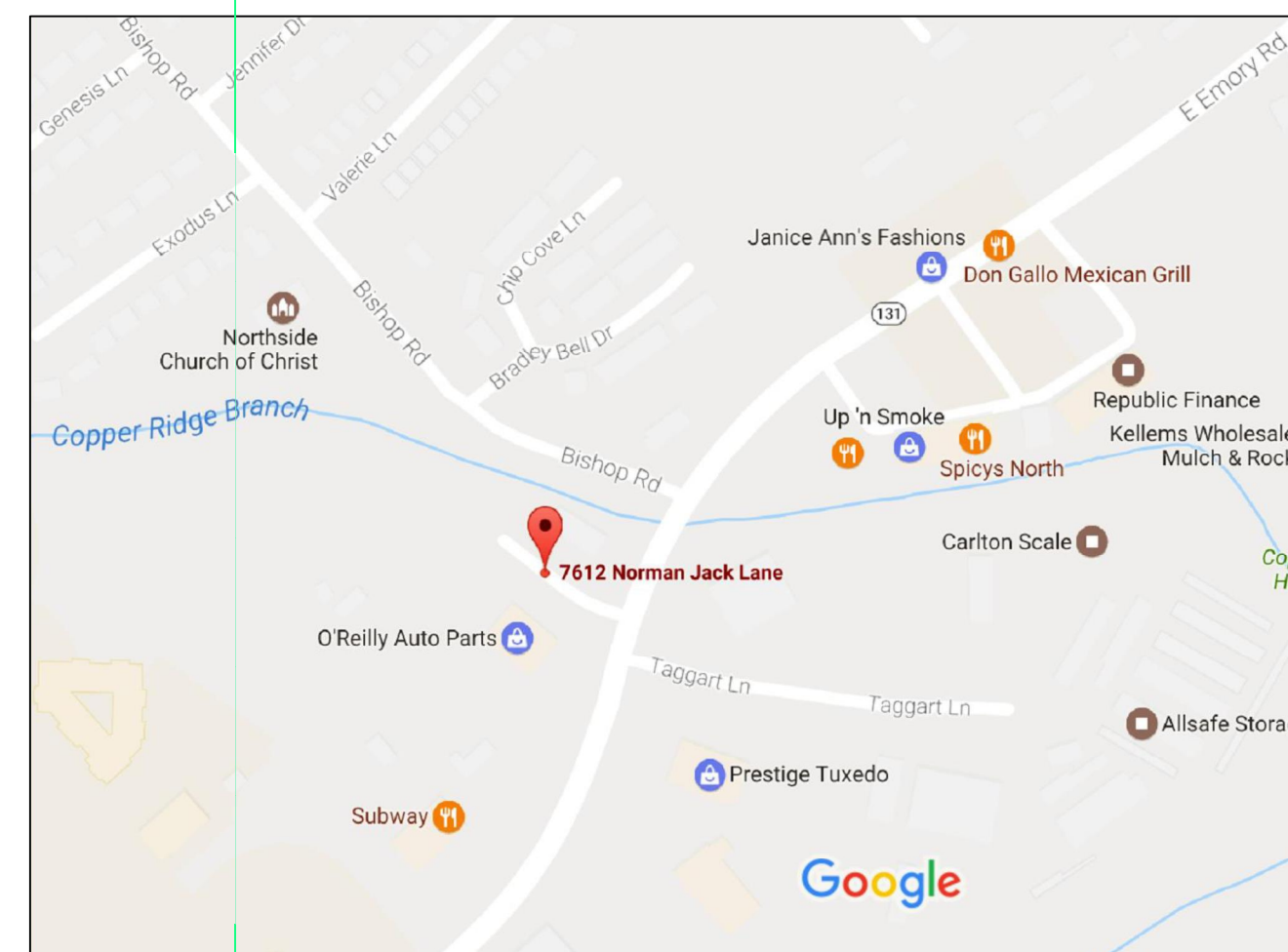
76## Norman Jack Lane  
Knoxville, TN 37938

**DRAWING INDEX**

6001	PROJECT INFORMATION
MFC01	CONCEPT LAYOUT PLAN
MFC02	CONCEPT GRADING PLAN
LS101	LANDSCAPE PLAN & NOTES
A101	FLOOR PLAN
A102	MEZZANINE FLOOR PLAN
A201	ELEVATION
A202	ELEVATIONS



① Vicinity Map  
SCALE: N.T.S.



② Project Site  
SCALE: N.T.S.

**FACILITY AND CODE COMPLIANCE INFORMATION**

PARCEL DESCRIPTION	Parcel ID: 04707517
PROPERTY ZONE	PG - Knox County
PROPERTY SIZE	1.61 Acres
BUILDING SQUARE FOOTAGE	Main Level - 5,886 S.F. Mezzanine - 480 S.F.
FLOOR LEVELS	2-Story, 45' Height - Allowed 1-Story, 10' Height - Actual
CONSTRUCTION CLASSIFICATION	R-3 Sleeping Units (2,486 s.f.) S-2 Private Vehicle Storage (3,416 s.f.) B Offices within Living Annex (236 s.f.) Exercise Mezzanine (480 s.f.)
OCCUPANCY CLASSIFICATION	Type VB, unprotected, 1Bd sprinklered
ACCESSORY OCCUPANCY	Residential - Group R-3 Storage - Group S-2
OCCUPANT LOAD	Business - Offices and Exercise Mezzanine
FIRE PROTECTION	R-3: 1Bd Required; Provided S-2: None Required; 1Bd Provided
RATED WALLS	Corridor - 1-hour Sleeping Unit Walls - 1/2-hour R/S-2 Separation - 1-hour
TOILETS	R-3 Required: 1/100=1 Lav, 1/100=1 Shower, 1/100=1 Sery Sink, 1/100=1 DF S-2 Required: 1/100=16 Lav, 1/100=16 Shower, 1/100=1 Sery Sink, 1/100=1 DF Total Required: 116 Lav, 116 Shower, 1 Sery Sink, 1 DF Total Provided: 3 Lav, 3 Shower, 3 Sery Sink, 1 DF (1 BATHROOM IS HANDICAP ACCESSIBLE)
DETECTION AND ALARM SYSTEMS	Yes, SMOK, FIRE (NOT REQUIRED, BUT PROVIDED)
EMERGENCY ILLUMINATION	Provided
MAXIMUM TRAVEL DISTANCE TO EXITS	200 feet allowed, 75 feet common path Provided 80' Max. Provided - 5lb A, 10lb BC
FIRE EXTINGUISHERS	Required: 1/2 Actual Boarders 9/2 = 5 spaces Business 1/250 s.f. 236/250 = 1 space TOTAL REQUIRED: 6 spaces with 1 H.C. Van space with signage
PARKING	PROVIDED: 1 H.C. VAN SPACE, 15 TOTAL

**GENERAL NOTES**

- 01 SCOPE OF WORK: New Fire Station.
- 02 ALL WORK SHALL BE PERFORMED IN ACCORDANCE WITH ALL LOCAL CODES, ORDINANCES, AMENDMENTS, AND COVENANTS:
  - City of Knoxville Zoning Ordinance (with amendments)
  - 2004 ICG/ANSI A11.1
  - 2012 International Energy Conservation Code
  - 2012 Green Construction Code (pending adoption)
  - 2012 International Building Code
  - 2012 International Existing Building Code
  - 2012 International Residential Code
  - 2012 International Performance Code
  - 2011 edition of the National Electrical Code
  - 2012 edition of the International Fuel Gas Code
  - 2012 edition of the International Mechanical Code
  - 2012 edition of the International Plumbing Code
  - 2012 edition of the International Property Maintenance Code
  - 2012 International Fire Code with Local Amendments
  - Knoxville Code of Ordinances: Chapter 6 Buildings and Building Regulations, Article 1, Section 6-5, Fire District
- 03 READ (OR CALCULATE) DIMENSIONS FROM PUBLISHED PRINTS OF CONSTRUCTION DRAWINGS; DO NOT "SCALE" FROM DRAWINGS, IN EITHER THEIR PUBLISHED OR ELECTRONIC FORMS.
- 04 CONTRACTOR SHALL VERIFY EXISTING CONDITIONS AND DIMENSIONS BEFORE BEGINNING CONSTRUCTION. ANY DISCREPANCIES MUST BE REPORTED TO ODLE & YOUNG ARCHITECTS, INC. FOR JUSTIFICATION AND/OR CORRECTION. CONTRACTOR ASSUMES RESPONSIBILITY FOR CONDITIONS THAT ARE NOT REPORTED.
- 05 CONTRACTOR SHALL FIELD-VERIFY COMPATIBILITY OF THE BUILDING WITH ALL SITE CONDITIONS, I.E., GRADES, ELEVATIONS, UTILITY LOCATIONS AND INVERTS, OTHER EXISTING CONDITIONS, ETC.
- 06 ALL FOOTINGS MUST REST ON UNDISTURBED OR SUITABLE, COMPACTED SUBSOIL.
- 07 MANUFACTURED TRUSSES, BEAMS, AND OTHER ENGINEERED BUILDING SYSTEMS MUST BE DESIGNED BY THE MANUFACTURER'S ENGINEER, WHO SHALL BE REGISTERED IN THE STATE OF TENNESSEE; STAMPED, APPROVED SHOP DRAWINGS SHALL BE ON-SITE BEFORE ERECTION BEGINS.

5-D-17-UR  
Revised: 4/27/2017

**ISSUED FOR:**

- PRELIMINARY APPROVAL
- FOR INFORMATION ONLY
- PROGRESS STATUS REVIEW
- CODE REVIEW
- CONSTRUCTION
- AS-BUILT DOCUMENTS

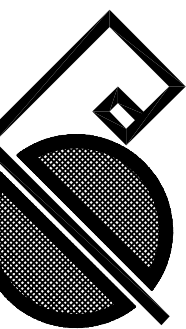
SET NO.:



0 / 00 / 20xx  
All copyrights reserved by Odle & Young Architects, Inc. This document, including its electronic form, are instruments of service for use solely on this project. It may not be copied, reproduced, or used without the express written consent of Odle & Young Architects, Inc. All original instruments of service remain the sole property of Odle & Young Architects, Inc.

**ODLE & YOUNG ARCHITECTS, INC.**

1545 Western Ave.  
Knoxville, TN 37921  
865-523-8200 Fax  
865-523-8266  
office@oyarchitects.com  
www.oyarchitects.com

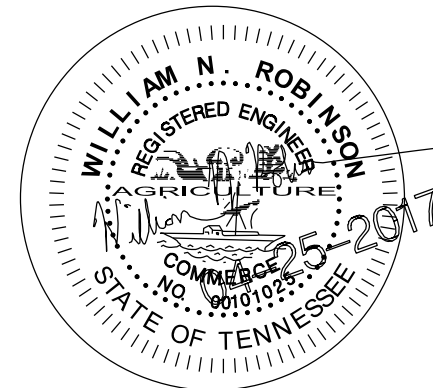


Rural Metro Corporation  
Station 32

Norman Jack Lane  
Knoxville, Tennessee

MARK	DATE	ISSUE FOR
0	02/23/17	CLIENT REVIEW
0	09/24/17	KNOX MFC USE

PROJECT #	16077
DRAWN	SDS
CHECKED	
SHEET TITLE	Project Information
SHEET	G100
PROJECT NAME	Rural Metro Station 32

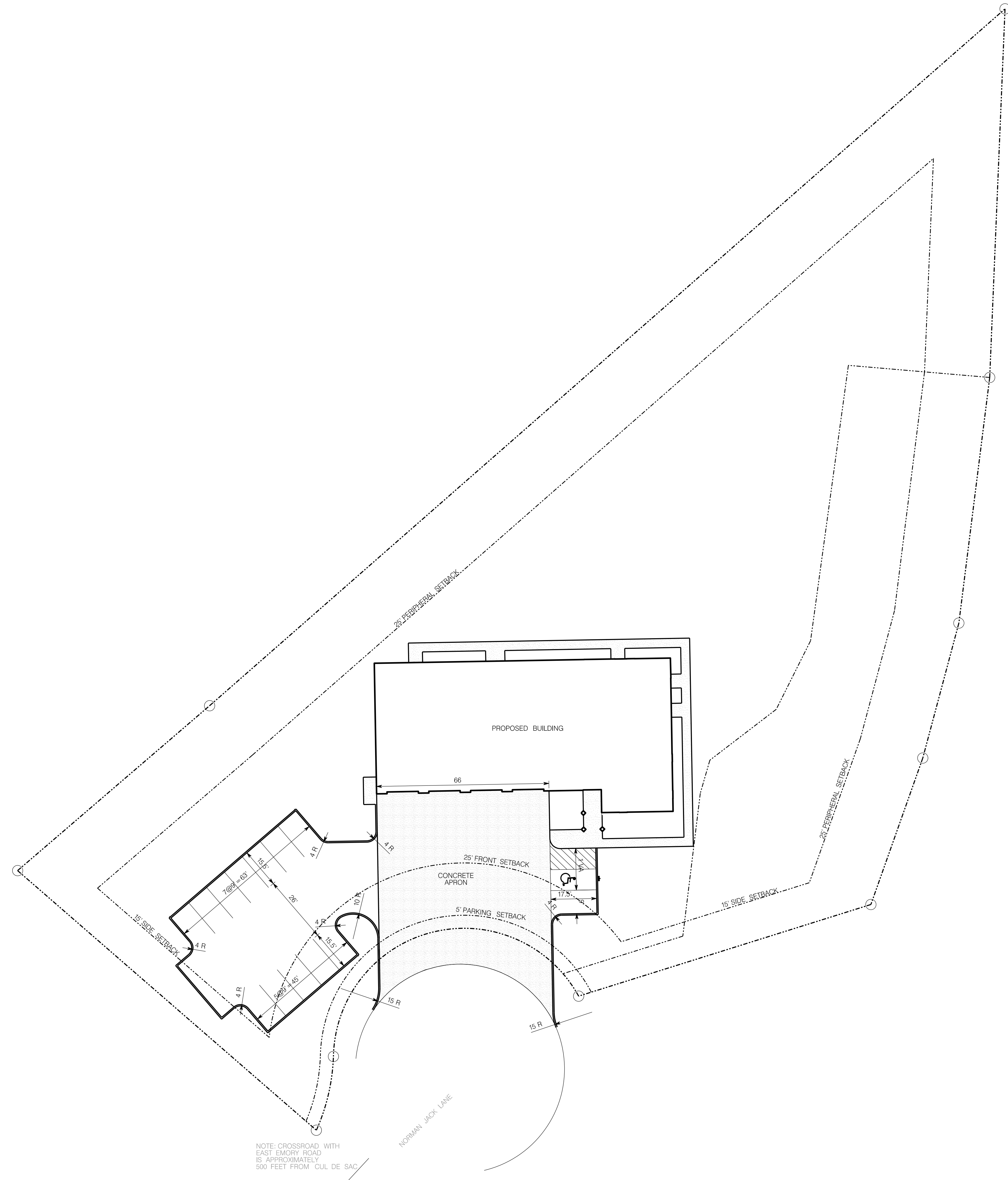


All copyrights reserved by Odle & Young Architects, Inc. This document, including its electronic form, are instruments of service for use solely on this project. It may not be copied, reproduced, or raised without the express written consent of Odle & Young Architects, Inc. All original instruments of service remain the sole property of Odle & Young Architects, Inc.

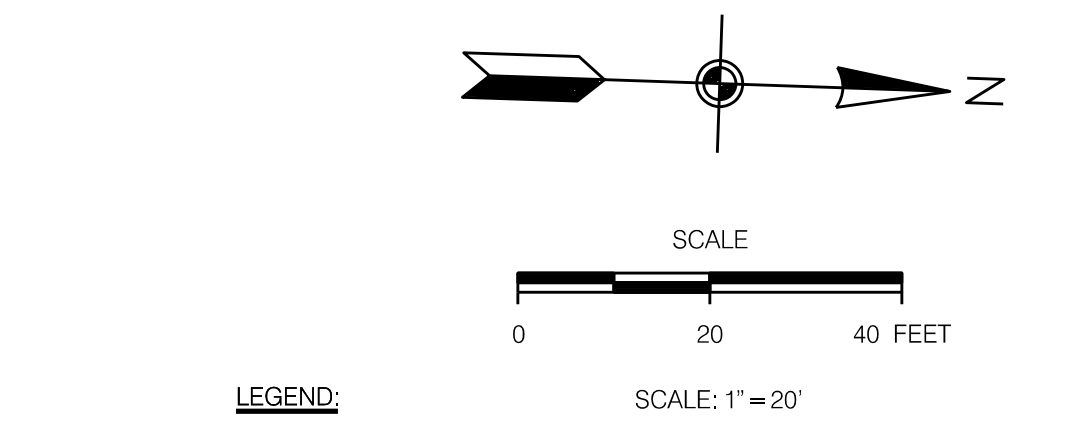
# ODLE & YOUNG ARCHITECTS, INC.

1545 Western Ave.  
Knoxville, TN 37921  
615-523-8200 Fax  
office@oyarchitects.com  
www.oyarchitects.com

Rural Metro Corporation  
Station 32  
Norman Jack Lane  
Knoxville, Tennessee



NOTE: CROSSROAD WITH EAST EMORY ROAD IS APPROXIMATELY 500 FEET FROM CUL DE SAC

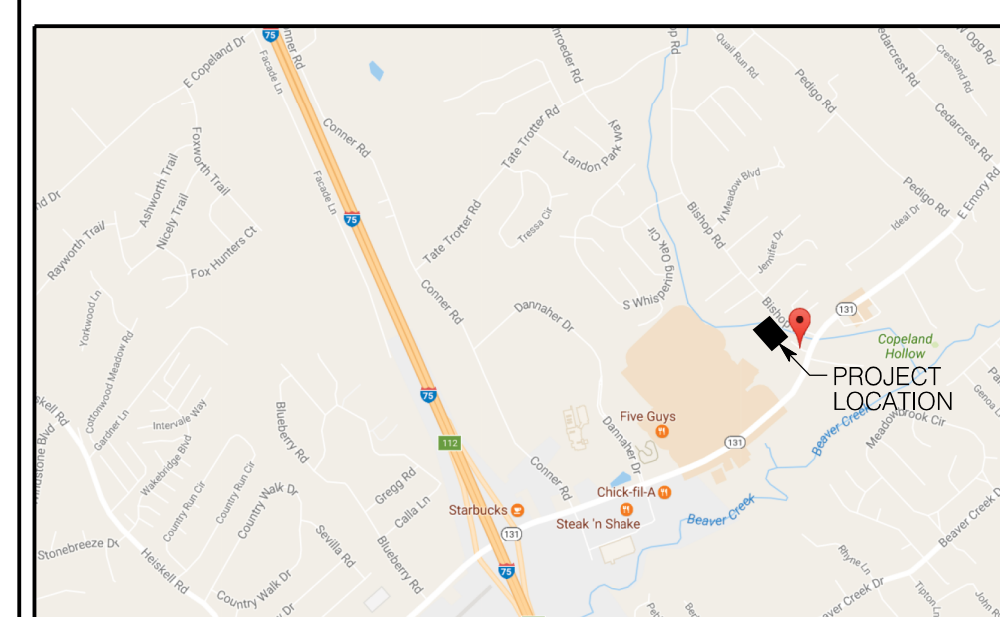


**LEGEND:**

EXISTING	PROPOSED	
535	535	GROUND CONTOUR ELEVATION
535.25'	535.25'	SPOT ELEVATION
[Symbol]	[Symbol]	STRUCTURE
[Symbol]	NA	PROPERTY LINE
[Symbol]	NA	EASEMENT
[Symbol]	[Symbol]	EDGE OF PAVEMENT
SD	[Symbol]	STORM DRAIN
SS	NA	SANITARY SEWER
W	PW	POTABLE WATER
NG	NG	NATURAL GAS
W	FW	FIRE PROTECTION
[Symbol]	[Symbol]	MANHOLE
[Symbol]	[Symbol]	WATER METER
[Symbol]	[Symbol]	FIRE HYDRANT
NA	[Symbol]	SILT FENCING
NA	[Symbol]	INLET PROTECTION
NA	[Symbol]	CURB
NA	[Symbol]	CONCRETE PAVEMENT
NA	[Symbol]	ASPHALT PAVEMENT

USE: FIRE HALL  
 ZONING: PC  
 PARCEL: 047 07517  
 PARKING SUMMARY:  
 PARKING REQUIRED: NOT DEFINED BY ORDINANCE  
 PARKING PROVIDED: 14 SPACES  
 SETBACKS:  
 PERIPHERAL: 25'  
 FRONT: 25'  
 SIDE: 15'  
 BUILDING AREA: 5,872 SF  
 PARCEL AREA: 1.61  
 IMPERVIOUS AREA: 0.37 AC  
 FLOOR AREA RATIO: 8.3%  
 IMPERVIOUS AREA RATIO: 23%  
 BUILDING AREA RATIO: 8.3%

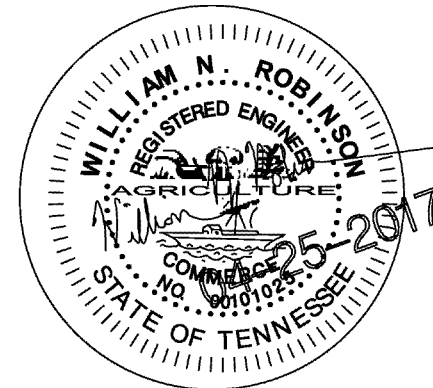
5-D-17-UR  
 Revised: 4/27/2017



MARK	DATE	ISSUE FOR
0	02/23/17	CLIENT REVIEW

PROJECT #	SHEET TITLE
	CONCEPT PLAN

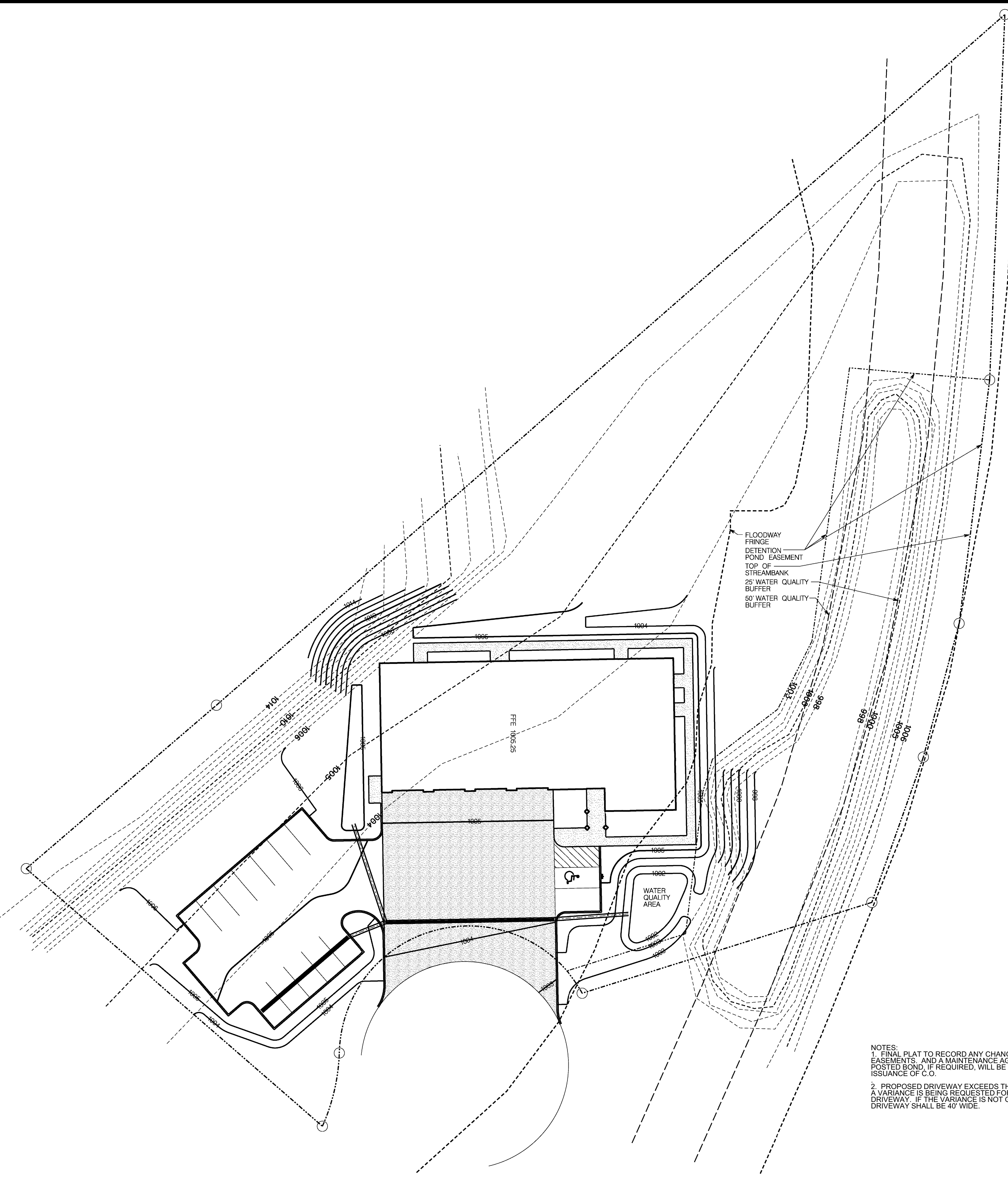
SHEET  
**MPC01**  
 PROJECT NAME  
 Rural Metro  
 Station 32



All copyrights reserved by Odle & Young Architects, Inc. This document, including its electronic form, are instruments of service for use solely on this project. It may not be copied, reproduced, or revised without the express written consent of Odle & Young Architects, Inc. All original instruments of service remain the sole property of Odle & Young Architects, Inc.

**ODLE & YOUNG ARCHITECTS, INC.**  
 1545 Western Ave.  
 Knoxville, TN 37921  
 615-523-8200 Fax  
 office@oyarchitects.com  
 www.oyarchitects.com

Rural Metro Corporation  
 Station 32  
 Norman Jack Lane  
 Knoxville, Tennessee



SCALE  
0 20 40 FEET

SCALE: 1"=20'

**LEGEND:**

<b>EXISTING</b>	<b>PROPOSED</b>	<b>GROUND CONTOUR ELEVATION</b>
535	535	SPOT ELEVATION
535.25'	535.25'	STRUCTURE
[Symbol]	[Symbol]	PROPERTY LINE
[Symbol]	[Symbol]	EASEMENT
[Symbol]	[Symbol]	EDGE OF PAVEMENT
SD	[Symbol]	STORM DRAIN
SS	NA	SANITARY SEWER
W	PW	POTABLE WATER
NG	NG	NATURAL GAS
W	FW	FIRE PROTECTION
[Symbol]	[Symbol]	MANHOLE
[Symbol]	[Symbol]	WATER METER
[Symbol]	[Symbol]	FIRE HYDRANT
NA	[Symbol]	SILT FENCING
NA	[Symbol]	INLET PROTECTION
NA	[Symbol]	CURB
NA	[Symbol]	CONCRETE PAVEMENT
NA	[Symbol]	ASPHALT PAVEMENT

FLOODWAY FRINGE  
 DETENTION POND EASEMENT  
 TOP OF STREAMBANK  
 25' WATER QUALITY BUFFER  
 50' WATER QUALITY BUFFER

WATER QUALITY AREA

NOTES:  
 1. FINAL PLAT TO RECORD ANY CHANGES IN STORMWATER EASEMENTS, AND A MAINTENANCE AGREEMENT, OR POSTED BOND, IF REQUIRED, WILL BE RECORDED BE ISSUANCE OF C.O.  
 2. PROPOSED DRIVEWAY EXCEEDS THE 40' MAXIMUM WIDTH. A VARIANCE IS BEING REQUESTED FOR THE WIDER DRIVEWAY. IF THE VARIANCE IS NOT GRANTED, THE DRIVEWAY SHALL BE 40' WIDE.

5-D-17-UR  
 Revised: 4/27/2017

MARK	DATE	ISSUE FOR
0	02/23/17	CLIENT REVIEW

PROJECT #	
DRAWN	
CHECKED	
SHEET TITLE	CONCEPT GRADING PLAN
SHEET	MPC02
PROJECT NAME	Rural Metro Station 32

**LANDSCAPE LEGEND**

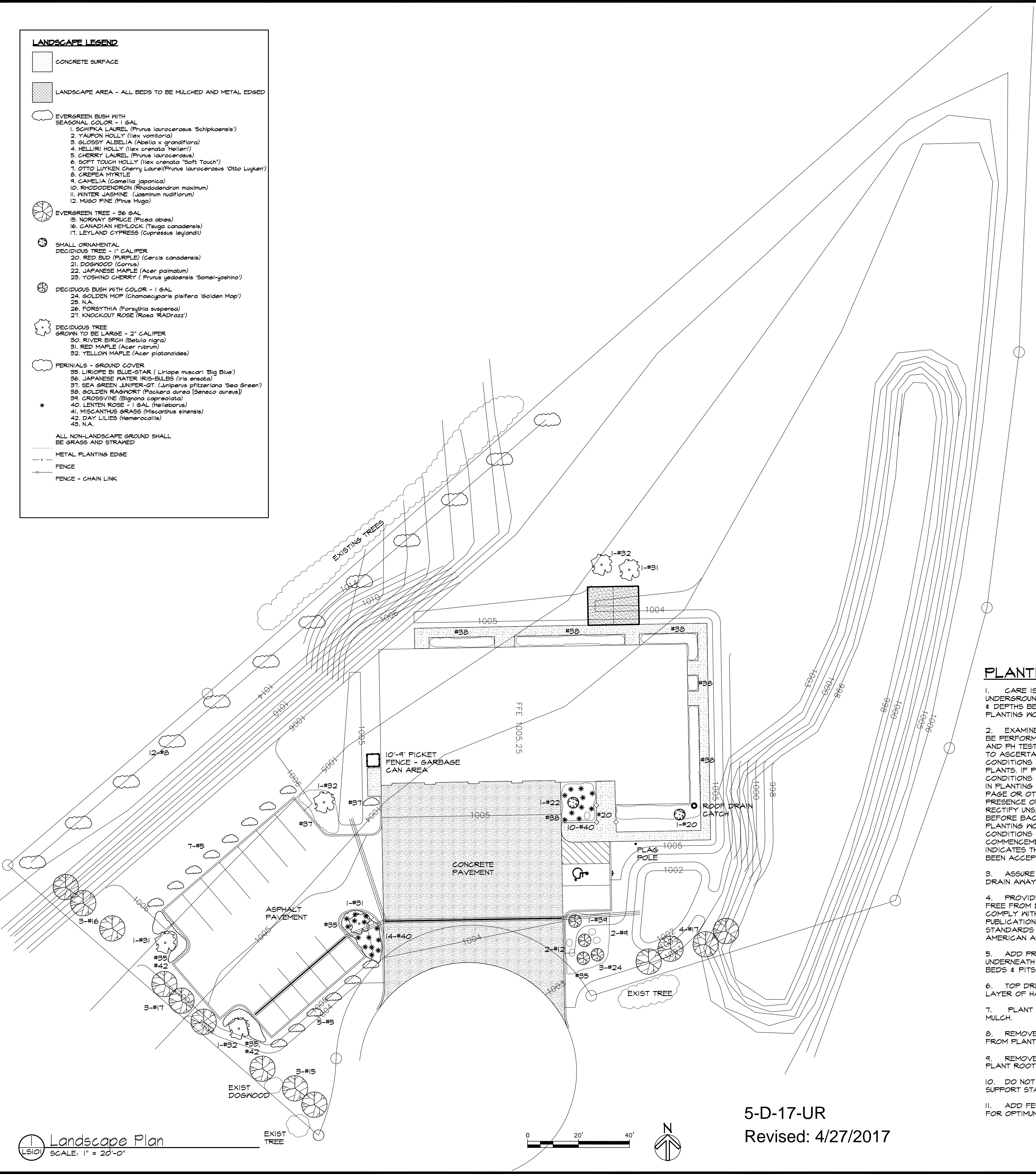
[Symbol]	CONCRETE SURFACE
[Symbol]	LANDSCAPE AREA - ALL BEDS TO BE MULCHED AND METAL EDGED
[Symbol]	EVERGREEN BUSH WITH SEASONAL COLOR - 1 GAL
1.	SCHIPKA LAUREL ( <i>Prunus laurocerasus</i> 'Schipkaensis')
2.	YAUPOH HOLLY ( <i>Ilex vomitoria</i> )
3.	GLOSSY ALBELLIA ( <i>Abelia x grandiflora</i> )
4.	HELLBRI HOLLY ( <i>Ilex crenata</i> 'Helleri')
5.	CHERRY LAUREL ( <i>Prunus laurocerasus</i> )
6.	SOFT TOUCH HOLLY ( <i>Ilex crenata</i> 'Soft Touch')
7.	OTTO LUYKEN Cherry Laurel ( <i>Prunus laurocerasus</i> 'Otto Luyken')
8.	CREEPEA MYRTLE
9.	CAMELIA ( <i>Camellia japonica</i> )
10.	RHODODENDRON ( <i>Rhododendron maximum</i> )
11.	WINTER JASMINE ( <i>Jasminum nudiflorum</i> )
12.	MUGO PINE ( <i>Pinus Mugo</i> )
[Symbol]	EVERGREEN TREE - 36 GAL
13.	NORWAY SPRUCE ( <i>Picea abies</i> )
14.	CANADIAN HEMLOCK ( <i>Tsuga canadensis</i> )
15.	LEYLAND CYPRESS ( <i>Taxodium distichum</i> )
[Symbol]	SMALL ORNAMENTAL DECIDUOUS TREE - 1" CALIPER
16.	RED BUD (PURPLE) ( <i>Cercis canadensis</i> )
17.	DOGWOOD ( <i>Cornus</i> )
18.	JAPANESE MAPLE ( <i>Acer palmatum</i> )
19.	YOSHINO CHERRY ( <i>Prunus yedoensis</i> 'Somai-yoshino')
[Symbol]	DECIDUOUS BUSH WITH COLOR - 1 GAL
20.	GOLDEN MOP ( <i>Chamaecyparis pisifera</i> 'Golden Mop')
21.	N.A.
22.	FORESYTHIA ( <i>Forsythia suspensa</i> )
23.	KNOCKOUT ROSE ( <i>Rosa 'Knockout'</i> )
[Symbol]	DECIDUOUS TREE GROWN TO BE LARGE - 2" CALIPER
24.	RIVER BIRCH ( <i>Betula nigra</i> )
25.	RED MAPLE ( <i>Acer rubrum</i> )
26.	YELLOW MAPLE ( <i>Acer platanoides</i> )
[Symbol]	PERENNIALS - GROUND COVER
27.	LIRIOPE BI BLUE STAR ( <i>Liriope muscari</i> 'Big Blue')
28.	JAPANESE WATER IRIS-BULBS ( <i>Iris ensata</i> )
29.	SEA GREEN JUNIPER-OT ( <i>Juniperus pfitzeriana</i> 'Sea Green')
30.	GOLDEN RAINBOW ( <i>Pachira aurea</i> 'Seneco aurea')
31.	CROSSVINE ( <i>Bignonia capreolata</i> )
32.	LENTEN ROSE - 1 GAL ( <i>Helleborus</i> )
33.	MISCANTHUS GRASS ( <i>Miscanthus sinensis</i> )
34.	DAY LILIES ( <i>Hemerocallis</i> )
35.	N.A.

ALL NON-LANDSCAPE GROUND SHALL BE GRASS AND STRAWED

METAL PLANTING EDGE

FENCE

FENCE - CHAIN LINK



**LANDSCAPE NOTES**

**LS1** PROVIDE PROTECTION OF EXISTING TREES THAT ARE TO BE PRESERVED. PROVIDE CRITICAL ROOT PROTECTION (CRZ) OF THE TREE DETERMINED BY MEASURING THE DIAMETER AT BREAST HEIGHT (DBH) OF THE TREE. AT MAXIMUM 20% OF THE CRZ CAN BE CUT IF PILLED OVER IN ORDER TO PRESERVE THE TREE. CRZ IS DETERMINED BY GOING 1 FOOT RADIUS FOR EVERY INCH DBH OF A TREE. IF DISTURBING THE CRZ, ROOT PRUNING AND OTHER PROTECTION MEASURES SHOULD BE IN PLACE. PROVIDE TREE PROTECTION ZONE WITH SILT TYPE FENCE.

**LS2** AT THE TIME OF PLANTING, ALL REQUIRED TREES SHALL HAVE A MINIMUM TRUNK DIAMETER OF AT LEAST 2" & SHALL BE NURSERY GROWN. ALL REQUIRED TREES SHALL HAVE A MINIMUM HEIGHT OF 6'-0" WHEN PLANTED. ALL REQUIRED SHRUBS USED FOR BUFFERING SHALL HAVE A MINIMUM HEIGHT OF 2'-0" WHEN PLANTED AND SHALL BE CAPABLE OF REACHING A HEIGHT OF 4'-0" WITHIN 3 YEARS OF PLANTING. SHRUBBERY USED FOR OTHER LANDSCAPING PURPOSES SHALL BE CAPABLE OF REACHING A MINIMUM HEIGHT OF 3'-0" WITHIN 3 YEARS OF PLANTING. ALL SHRUBBERY SHALL BE NURSERY GROWN.

**LS3** FRONTAL LANDSCAPE STRIP SHALL BE 10'-0" WIDE AND SHALL PROVIDED ONE SHADE TREE AT ± 19'-0" O.C. MINIMUM, THEY SHALL BE ALTERNATING RED AND YELLOW MAPLES. IT SHALL PROVIDED EVERGREEN BUSHES AT APPROXIMATELY 3'-0" O.C. THAT GROWS TO 3'-0" TALL. THERE SHALL BE (3) DIFFERENT TYPES OF BUSHES.

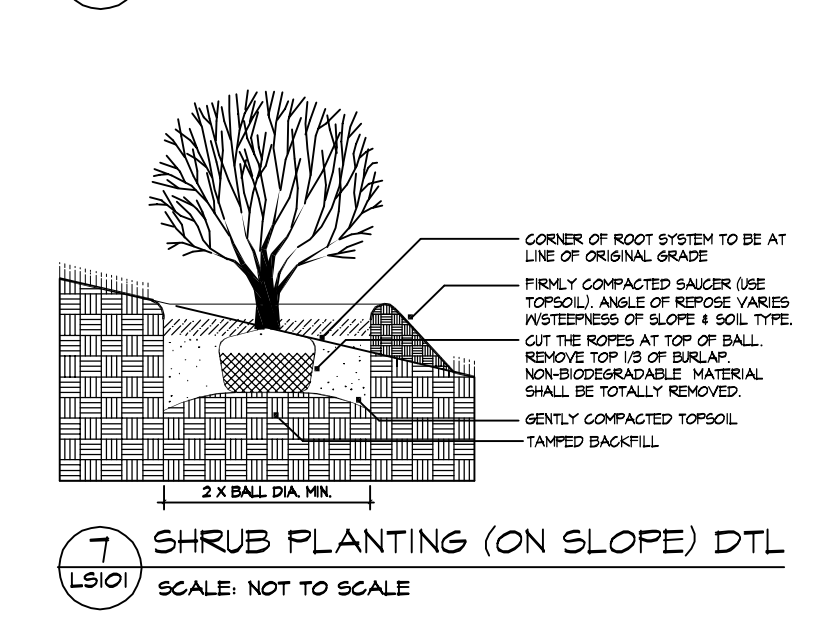
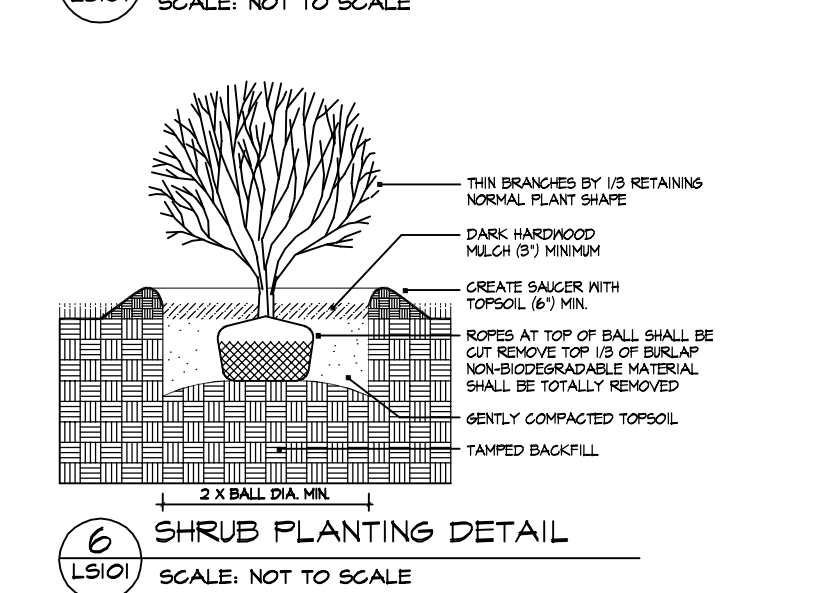
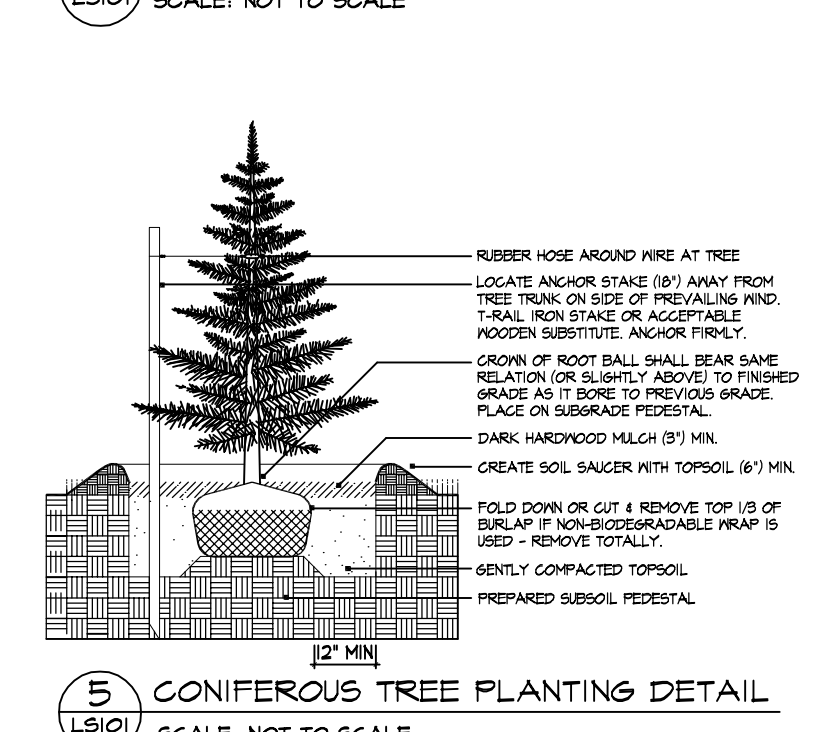
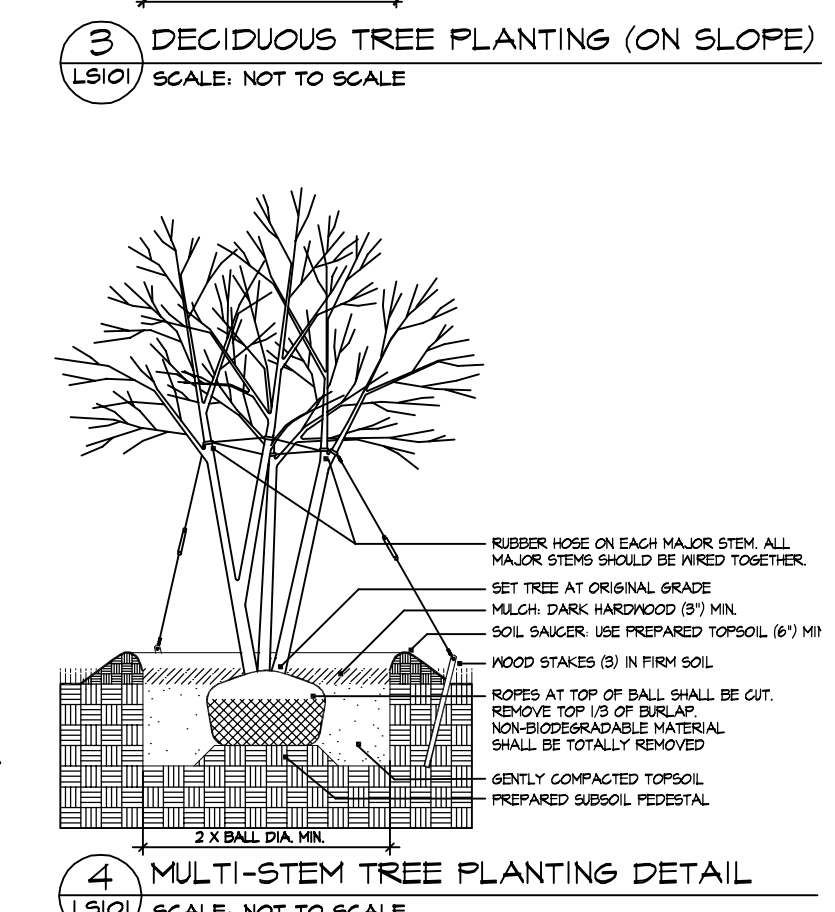
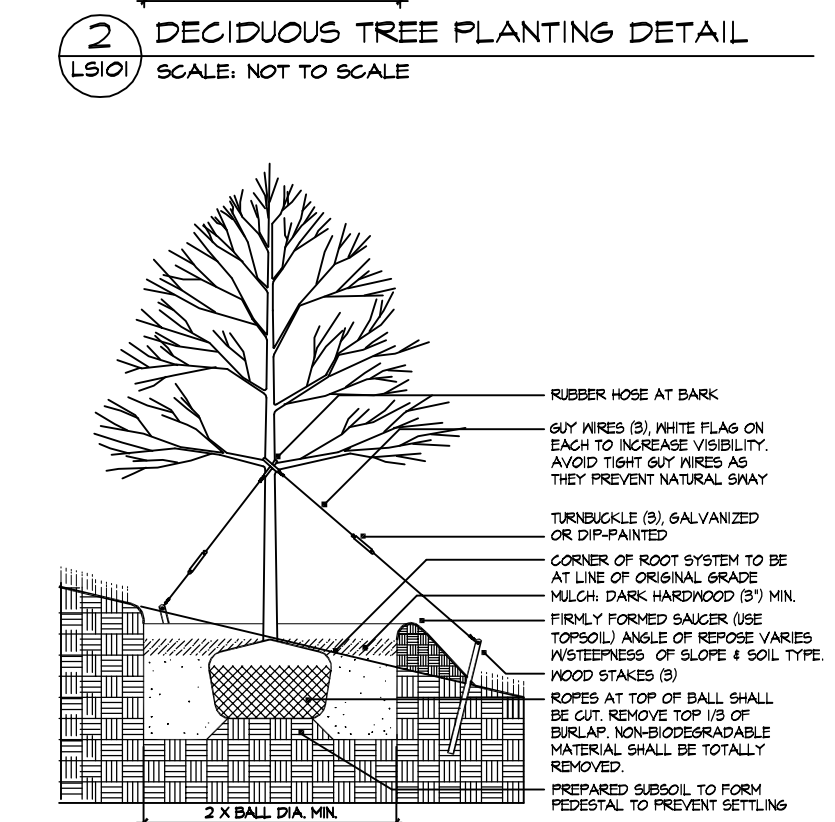
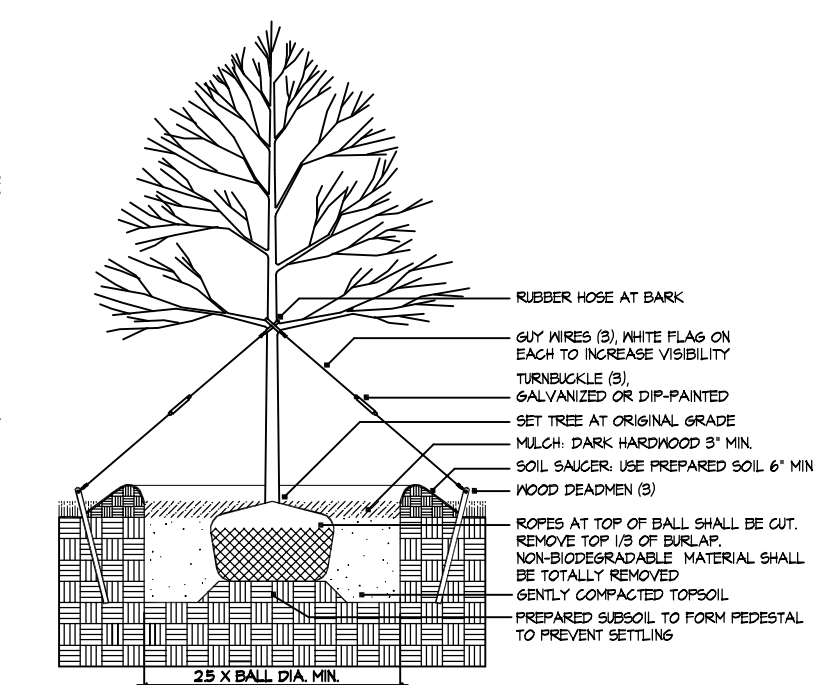
**LS4** AREA OTHER THAN LANDSCAPE AREAS, PARKING, AND WALKS SHALL BE MOWABLE GRASS.

**LS5** ALL TREES RETAINED OR PROVIDED TO MEET THE REQUIREMENTS OF THE CITY OF KNOXVILLE SHALL BE PROPERLY MAINTAINED TO ENSURE THEIR SURVIVAL FOR PERIOD OF AT LEAST (18) MONTHS FROM THE DATE OF COMPLETED CONSTRUCTION, FINAL PLAT APPROVAL, OR PLANTING, AS SPECIFIED BY THE CONTRACT. ANY TREE WHICH FAILS TO SURVIVE EIGHTEEN (18) MONTHS SHALL BE REPLACED WITHIN TWELVE (12) MONTHS OF LOSS. PROVIDE EIGHT (8) TREES PER ACRE. EXISTING AND/OR NEW, 50% OF THE TOTAL MUST CONSIST OF SPECIES THAT ATTAIN A MATURE HEIGHT OF 50 FEET OR MORE, THE REMAINING 50% MAY CONSIST OF SMALLER TREE SPECIES, INCLUDING ORNAMENTALS.

**LS6** ALL TREES RETAINED OR PROVIDED TO MEET THE REQUIREMENTS OF THE CITY OF KNOXVILLE SHALL BE PROPERLY MAINTAINED TO ENSURE THEIR SURVIVAL FOR A PERIOD OF AT LEAST EIGHTEEN (18) MONTHS FROM THE DATE OF COMPLETED CONSTRUCTION, FINAL PLAT APPROVAL, OR PLANTING, AS SPECIFIED BY THE CONTRACT. ANY TREE WHICH FAILS TO SURVIVE EIGHTEEN (18) MONTHS SHALL BE REPLACED WITHIN TWELVE (12) MONTHS OF LOSS. PROVIDE EIGHT (8) TREES PER ACRE. EXISTING AND/OR NEW, 50% OF THE TOTAL MUST CONSIST OF SPECIES THAT ATTAIN A MATURE HEIGHT OF 50 FEET OR MORE, THE REMAINING 50% MAY CONSIST OF SMALLER TREE SPECIES, INCLUDING ORNAMENTALS.

**PLANTING & GRASS SEEDING NOTES**

- CARE IS TO BE TAKEN TO PROTECT ALL UNDERGROUND UTILITIES. VERIFY LOCATIONS & DEPTHS BEFORE COMMENCING WITH PLANTING WORK.
- EXAMINE SITE UPON WHICH WORK IS TO BE PERFORMED. PROVIDE PERCOLATION AND PH TESTS, & OTHER TESTS NECESSARY TO ASCERTAIN THAT ADEQUATE GROWING CONDITIONS WILL BE PROVIDED FOR THE PLANTS. IF PERCOLATION TESTS OR SUBSOIL CONDITIONS INDICATE RETENTION OF WATER IN PLANTING AREAS, AS SHOWN BY SEE PAGE OR OTHER EVIDENCE INDICATING PRESENCE OF ANY UNDERGROUND WATER, RECTIFY UNSATISFACTORY CONDITIONS BEFORE BACKFILLING. DO NOT START PLANTING WORK UNTIL UNSATISFACTORY CONDITIONS HAVE BEEN CORRECTED. COMMENCEMENT OF PLANTING WORK INDICATES THAT SITE CONDITIONS HAVE BEEN ACCEPTED BY CONTRACTOR "AS IS".
- ASSURE THAT ALL PLANTING BEDS DRAIN AWAY FROM ALL STRUCTURES.
- PROVIDE & INSTALL PLANTS THAT ARE FREE FROM DISEASE & PESTS, & THAT COMPLY WITH THE LATEST EDITION OF PUBLICATION ANSI Z60 "AMERICAN STANDARDS FOR NURSERY STOCK" BY THE AMERICAN ASSOCIATION OF NURSERYMEN.
- ADD PRE-EMERGENT HERBICIDE UNDERNEATH MULCH IN LANDSCAPE PLANTING BEDS & PITTS.
- TOP DRESS PLANTING BEDS WITH 3" LAYER OF HARDWOOD MULCH.
- PLANT GROUND COVERS THROUGH MULCH.
- REMOVE ALL STRINGS & OTHER TIES FROM PLANT MATERIAL.
- REMOVE UPPER 1/3 OF BURLAP FROM ALL PLANT ROOT BALLS.
- DO NOT Pierce TREE ROOT BALLS WITH SUPPORT STAKES.
- ADD FERTILIZER & LIME AS REQUIRED FOR OPTIMUM PLANT PERFORMANCE.
- PLANT MATERIAL SHALL NOT BE PRUNED PRIOR TO INSTALLATION. AFTER PLANTS HAVE BEEN INSTALLED, EACH PLANT SHALL BE PRUNED TO UNIFORMITY.
- DO NOT MAKE SUBSTITUTIONS REGARDING PLANT SIZES OR SPECIES WITHOUT WRITTEN PERMISSION OF THE OWNER.
- ACTUAL AS-BUILT SITE CONDITIONS MAY VARY FROM THE PLAN. PLANT & MATERIAL QUANTITIES AS SHOWN ON THE PLAN ARE FOR UNIFORM COMPARISON & ESTIMATE PURPOSES ONLY. NOTIFY LANDSCAPE ARCHITECT OF ALL SITE CONDITIONS AFFECTING PLANT QUANTITIES AND/OR LOCATIONS.
- APPLY TEMPORARY GRASS SEEDING WHENEVER GRADING OPERATIONS ARE TEMPORARILY HALTED FOR OVER (14) DAYS & FINAL GRADING OF EXPOSED SURFACES IS TO BE COMPLETED WITHIN ONE YEAR.
- APPLY PERMANENT GRASS SEEDING WHENEVER GRADING OPERATIONS ARE COMPLETED & ALL CONSTRUCTION OPERATIONS WILL NOT IMPACT THE DISTURBED AREA. APPLY PERMANENT SEEDING TO ALL NON-CONSTRUCTION AREAS WHICH SHOW SIGNS OF EXCESSIVE EROSION. ADD STRAW OVER ALL SEEDED AREAS.
- AREAS TO BE SEEDED INCLUDE ALL EARTH SURFACES DISTURBED AS A RESULT OF CONSTRUCTION EXCEPT THOSE TO BE UNDER STRUCTURES, PAVEMENTS, OR AREAS FOR LANDSCAPE PLANTING BEDS.
- PROTECT SEEDED AREAS FROM TRAFFIC WITH BARRICADES, SIGNS, OR OTHER APPROPRIATE MEANS. PROTECT SEEDED SLOPES EXCEEDING 3:1 AGAINST EROSION WITH EROSION CONTROL BLANKETS.
- INSTALLED PLANT MATERIALS SHALL BE PROPERLY MAINTAINED TO ENSURE THEIR SURVIVAL FOR A PERIOD OF (18) MONTHS FROM THE DATE OF COMPLETE CONSTRUCTION, FINAL APPROVAL, OR PLANTING. ANY TREE OR SHRUB WHICH FAILS TO SURVIVE (12) MONTHS SHALL BE REPLACED IN THE NEXT GROWING SEASON.
- TREES TO HAVE TRUNK FLARE PLANTING AT GRADE FREE OF EXCESS SOIL AND MULCH.



All copyrights reserved by Odle & Young Architects, Inc. This document, including its electronic form, are instruments of service for use solely on this project. It may not be copied, reproduced, or retransmitted in any form without the express written consent of Odle & Young Architects, Inc. All original instruments of service remain the sole property of Odle & Young Architects, Inc.

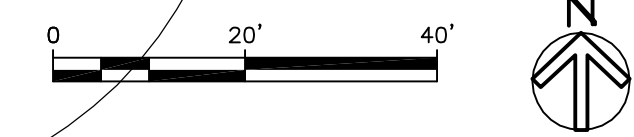
**ODLE & YOUNG ARCHITECTS, INC**  
 1545 Western Ave.  
 Knoxville, TN 37921  
 865-523-8200 Fax  
 865-523-8266  
 office@oyarchitects.com  
 www.oyarchitects.com

**Rural Metro Corporation Station 32**  
 Norman Jack Lane  
 Knoxville, Tennessee

MARK	DATE	ISSUE FOR
0	02/23/17	CLIENT REVIEW
0	09/24/17	KNOX MFC UOR

PROJECT #	16077
DRAWN	GAC
CHECKED	
SHEET TITLE	Landscape Plan & Notes
SHEET	LS101
PROJECT NAME	Rural Metro Station 32

LS101 Landscape Plan SCALE: 1" = 20'-0"



5-D-17-UR  
 Revised: 4/27/2017



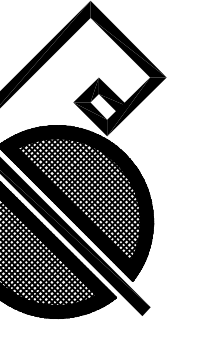


0 / 00 / 20xx

All copyrights reserved by Odle & Young Architects, Inc. This document, including its electronic form, are instruments of service for use solely on this project. It may not be copied, reproduced, or used without the express written consent of Odle & Young Architects, Inc. All original instruments of service remain the sole property of Odle & Young Architects, Inc.

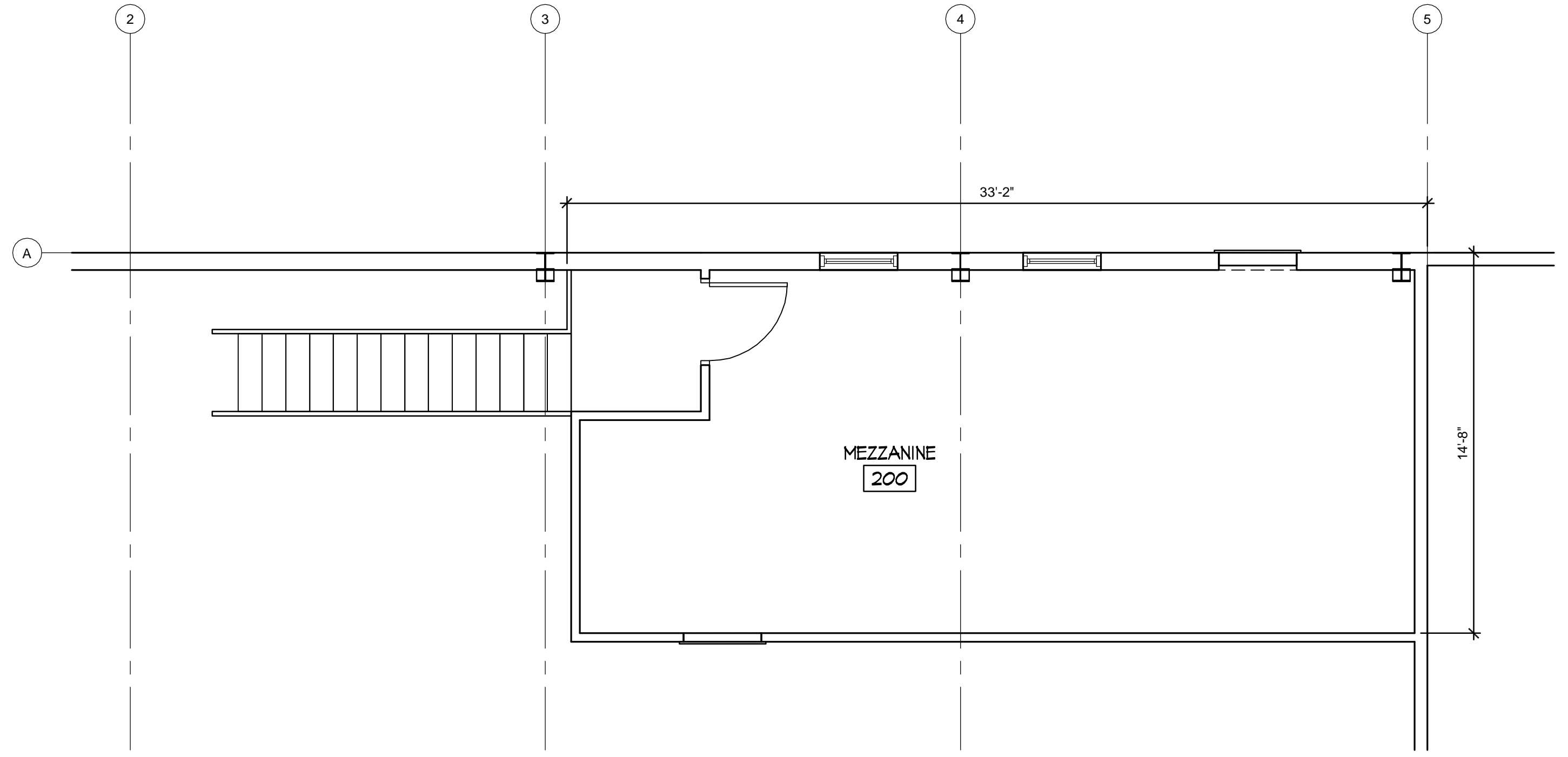
**ODLE & YOUNG ARCHITECTS, INC**

1545 Western Ave.  
Knoxville, TN 37921  
865-523-8200 Fax  
865-523-8266  
office@oyarchitects.com  
www.oyarchitects.com



Rural Metro Corporation  
Station 32

Norman Jack Lane  
Knoxville, Tennessee



**MEZZANINE FLOOR PLAN**  
SCALE: 1/4"=1'-0"

5-D-17-UR

Revised: 4/27/2017

MARK	DATE	ISSUE FOR
0	02/23/17	CLIENT REVIEW
0	09/27/17	RNOX MFC UOR

PROJECT #	16077
DRAWN	SDS
CHECKED	
SHEET TITLE	MEZZANINE FLOOR PLAN
SHEET	A102
PROJECT NAME	Rural Metro Station 32



0 / 00 / 20xx

All copyrights reserved by Odle & Young Architects, Inc. This document, including its electronic form, are instruments of service for use solely on this project. It may not be copied, reproduced, or used without the express written consent of Odle & Young Architects, Inc. All original instruments of service remain the sole property of Odle & Young Architects, Inc.

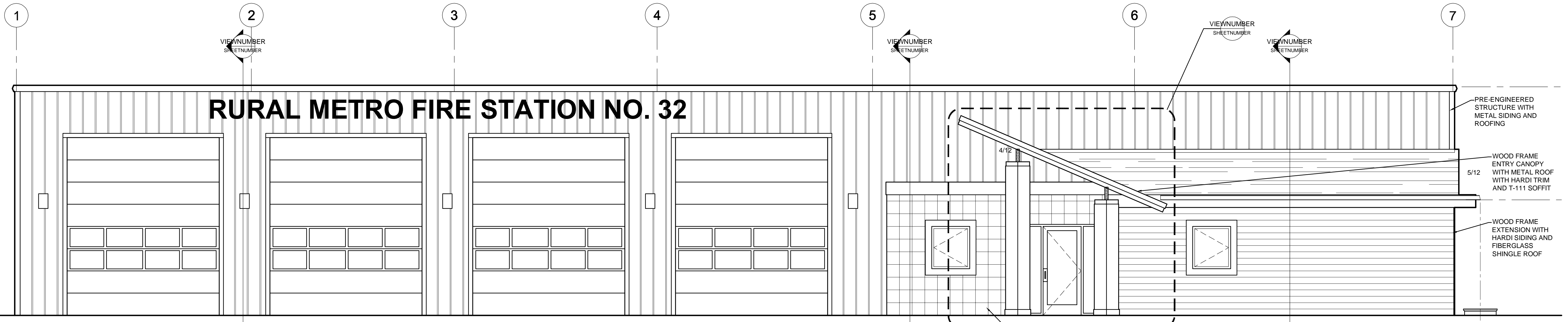
**ODLE & YOUNG ARCHITECTS, INC.**

1545 Western Ave.  
Knoxville, TN 37921  
865-523-8200 Fax  
865-523-8266  
office@oyarchitects.com  
www.oyarchitects.com

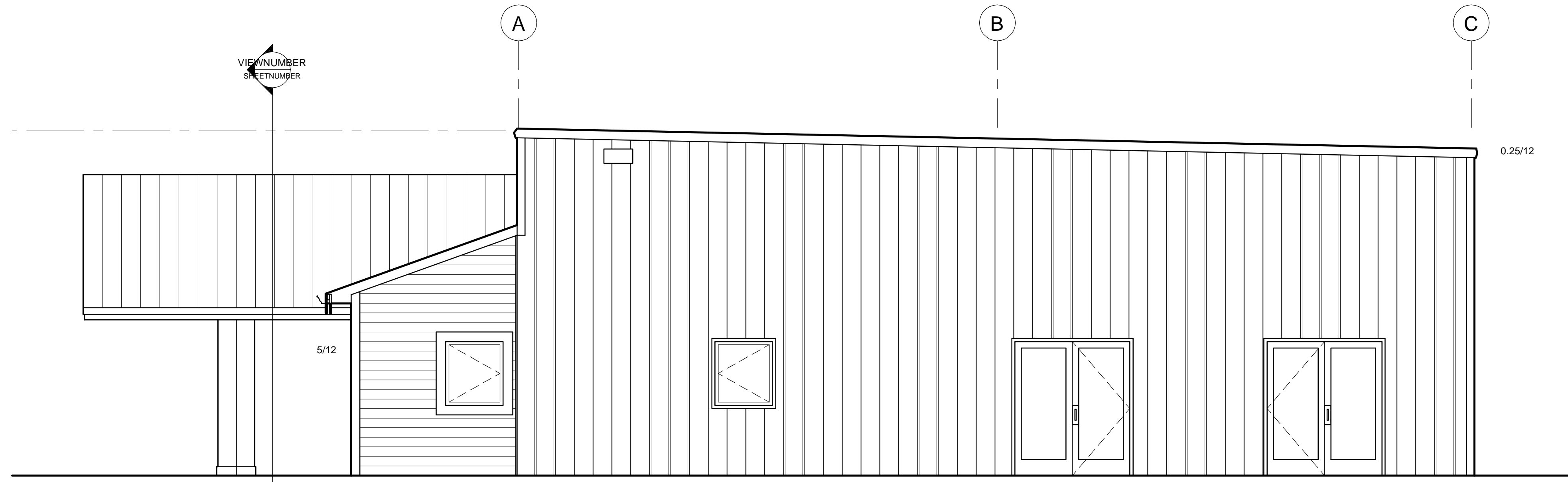


Rural Metro Corporation  
Station 32

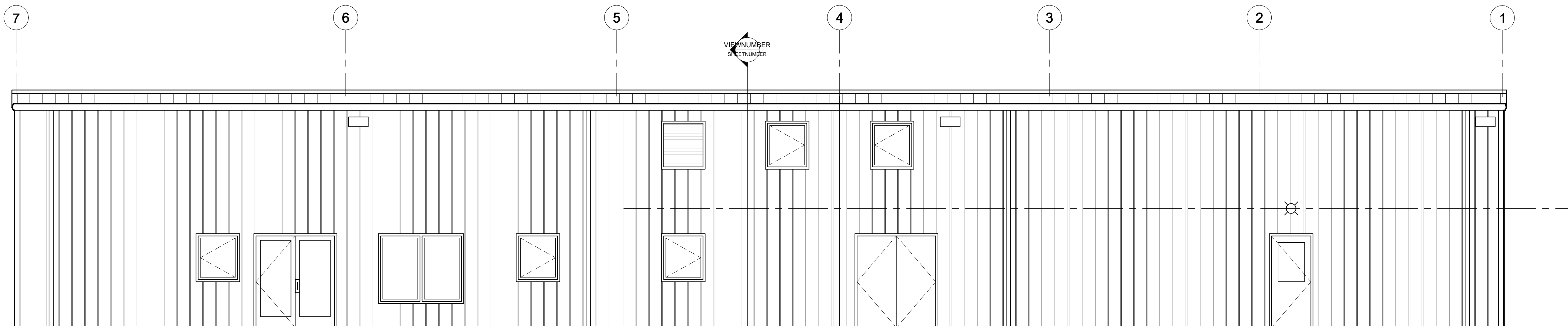
Norman Jack Lane  
Knoxville, Tennessee



1 EAST ELEVATION  
SCALE: 1/4"=1'-0"



2 NORTH ELEVATION  
SCALE: 1/4"=1'-0"



3 WEST ELEVATION  
SCALE: 1/4"=1'-0"

MARK	DATE	ISSUE FOR
0	02/23/17	CLIENT REVIEW
0	09/27/17	KNOX MFC USE

PROJECT #	16071
DRAWN	SDS
CHECKED	
SHEET TITLE	ELEVATIONS
SHEET	A201
PROJECT NAME	Rural Metro Station 32

5-D-17-UR  
Revised: 4/27/2017

