

# PINNACLE STORAGE

## CHAPMAN HIGHWAY

### KNOXVILLE, TENNESSEE

OWNER:

JOE TOUCHTON  
6017 CHALMERS DR  
KNOXVILLE, TN 37920  
(865) 659-9121

DEVELOPER:

ROBERT HIGH DEVELOPMENT  
324 GREENVILLE AVE  
WILMINGTON, NC 28403  
(910) 790-9490

ENGINEER/SURVEYOR:

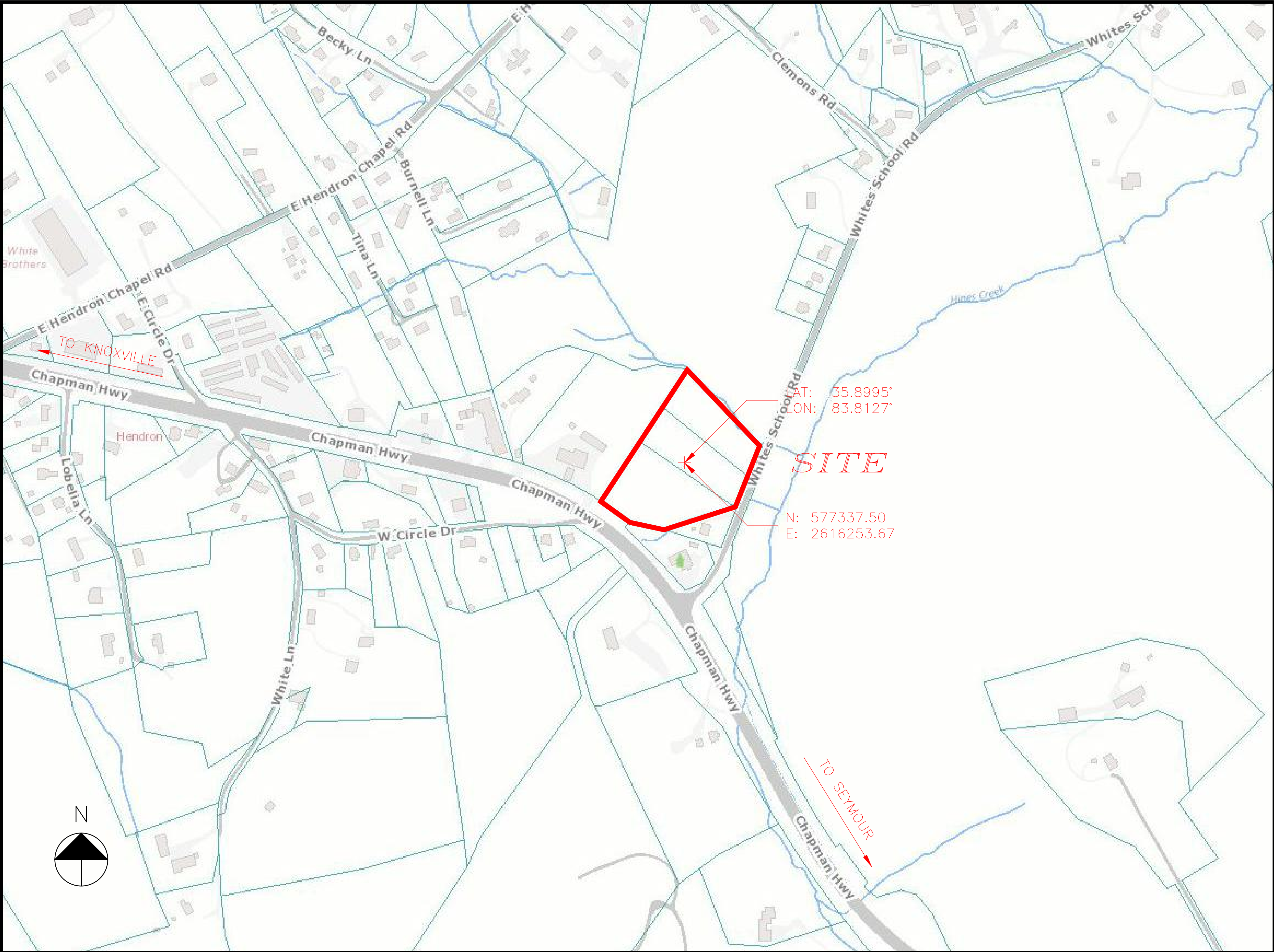
ROMANS ENGINEERING  
1923 HOPEWELL RD.  
KNOXVILLE, TN 37920  
TERRY E. ROMANS, PE, RLS

SITE ADDRESS  
AND PROPERTY INFO:

PARCEL ID 138 082.00  
OFF OF CHAPMAN HWY  
KNOXVILLE, TN 37920  
DEED 201201050036915  
PLAT 200706260106219  
LOT 1 - "RESUB OF THE SAM  
KECK & GUY LEWIS PROPERTY"

PARCEL ID 138 082.01  
121 WHITES SCHOOL RD  
KNOXVILLE, TN 37920  
DEED 201201050036915  
PLAT 200706260106219  
LOT 2 - "RESUB OF THE SAM  
KECK & GUY LEWIS PROPERTY"

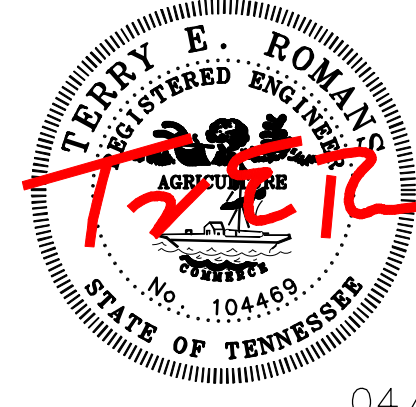
PARCEL ID 138 082.02  
OFF OF WHITES SCHOOL RD  
KNOXVILLE, TN 37920  
DEED 201201050036915  
PLAT 200706260106219  
LOT 3 - "RESUB OF THE SAM  
KECK & GUY LEWIS PROPERTY"



DRAWING INDEX:

- |    |                          |
|----|--------------------------|
| C1 | EXISTING SITE CONDITIONS |
| C2 | SITE LAYOUT              |
| C3 | GRADING & DRAINAGE       |

5-E-23-UR  
4/25/2023



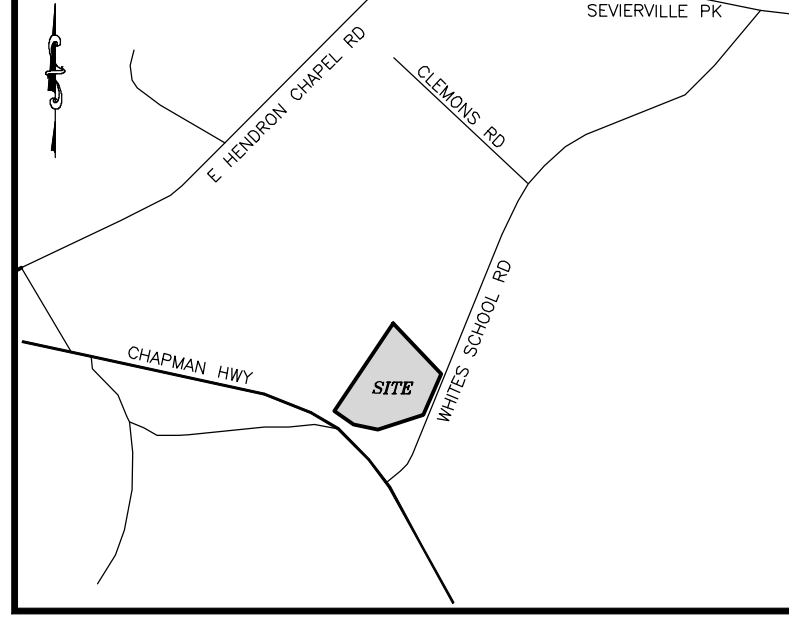
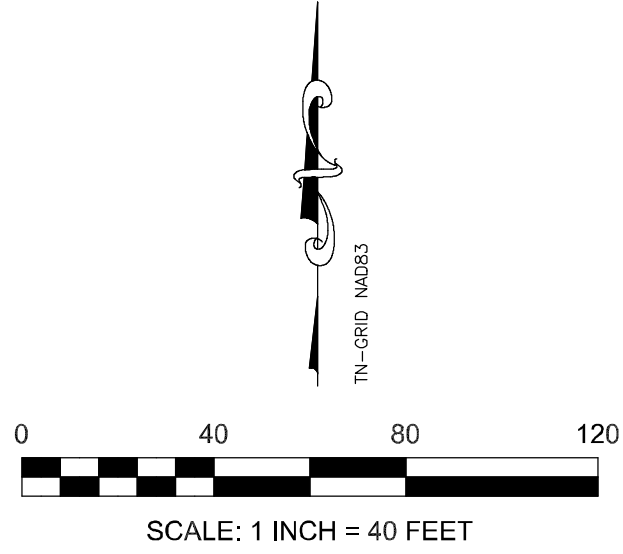
04/24/23

04/24/23

5-23-UR

USE ON REVIEW

- LEGEND**
- IR(O) o IRON ROD OLD UNMONUMENTED POINT
  - OU OVERHEAD UTILITIES
  - ⌋ POWER POLE
  - + GUY WIRE
  - WV >=1 WATER VALVE
  - ⊗ WATER METER
  - DRAINAGE DITCH
  - STORM PIPE
  - HW HEAD WALL
  - LINE NOT SURVEYED
  - FLOW LEADER



- NOTES**
- PROPERTY OWNERS:  
JOE & MARY TOUCHTON  
6017 CHALMERS DR  
KNOXVILLE, TENNESSEE 37920
  - PROPERTY REFERENCE:  
CHAPMAN HIGHWAY  
DISTRICT (9th)  
ZONE CA  
TAX MAP 138 PARCELS 082, 082.01, 082.02  
DEED 201201050036915  
PLAY 200706260106219  
RESUB OF THE SAM KECK & GUY LEWIS PROPERTY  
LOTS 1-3
  - REFER TO LOCAL ZONING REGULATIONS FOR REQUIRED SETBACKS.
  - THIS IS TO CERTIFY THAT I HAVE EXAMINED THE FLOOD INSURANCE RATE MAP FOR KNOX COUNTY TENNESSEE AND FOUND THAT HERON DESCRIBED PROPERTY IS NOT LOCATED IN A SPECIAL FLOOD HAZARD ZONE.
  - BEFORE DIGGING IN THIS AREA, CALL "ONE CALL" FOR FIELD LOCATIONS (REQUEST FOR GROUND MARKINGS) OF UNDERGROUND UTILITIES.
  - UTILITY, DRAINAGE, AND CONSTRUCTION EASEMENTS:  
10 FEET ALONG ALL EXTERIOR LOT LINES AND ALONG ROADS. 5 FEET ALONG ALL INTERIOR LOT LINES.

**ROMANS**  
Engineering

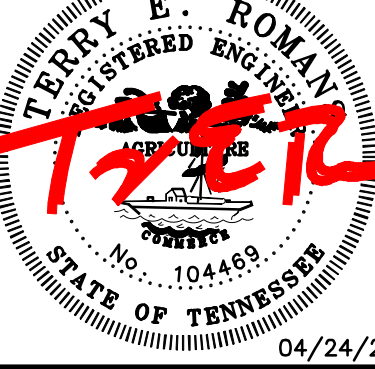
1923 Hopewell Road Knoxville, TN 37920  
Phone (865) 675-5726 romansengineering@gmail.com

PINNACLE STORAGE

KNOXVILLE, TENNESSEE

EXISTING SITE

DATE:					
REVISIONS:					
NUMBER:					

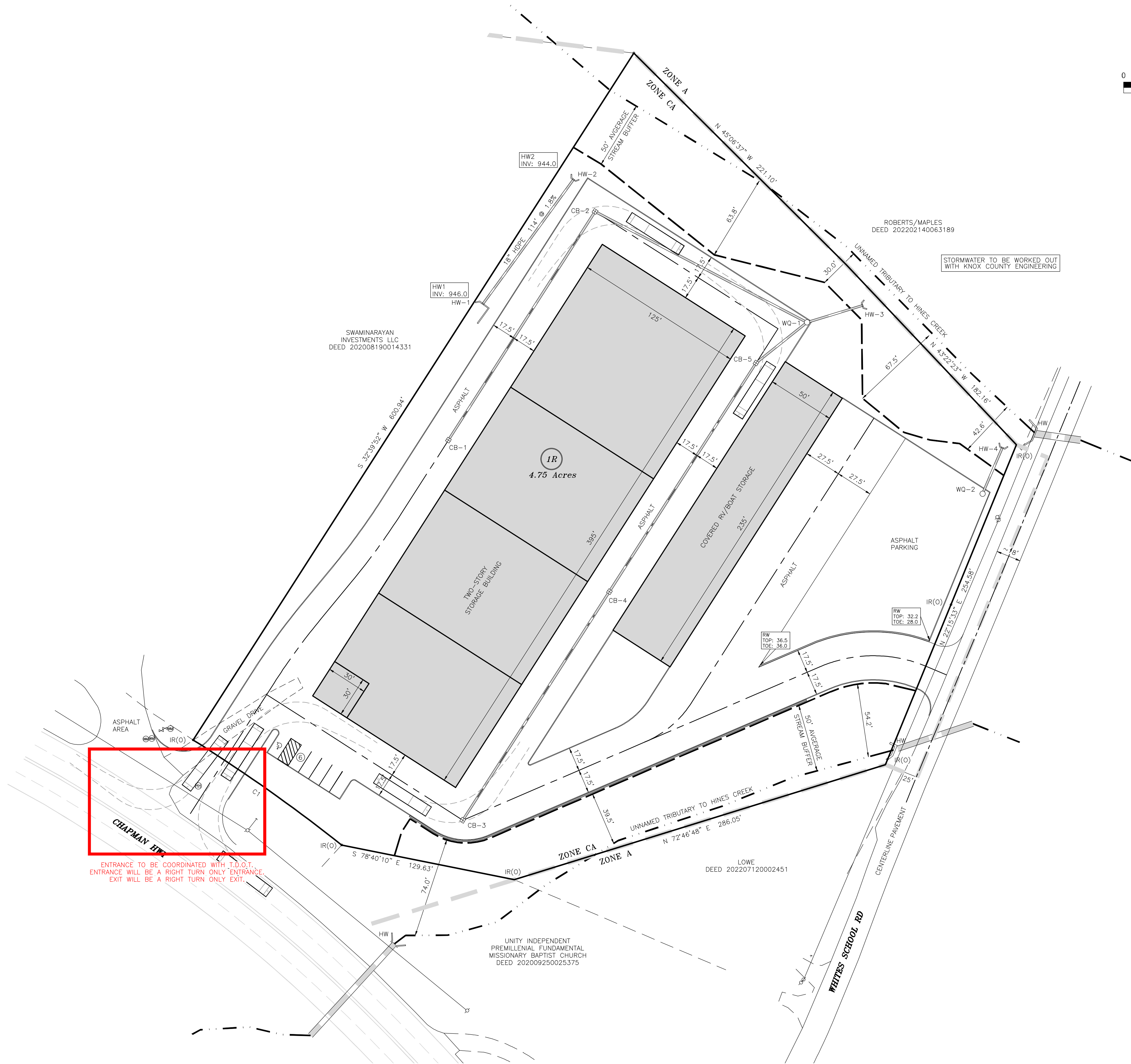
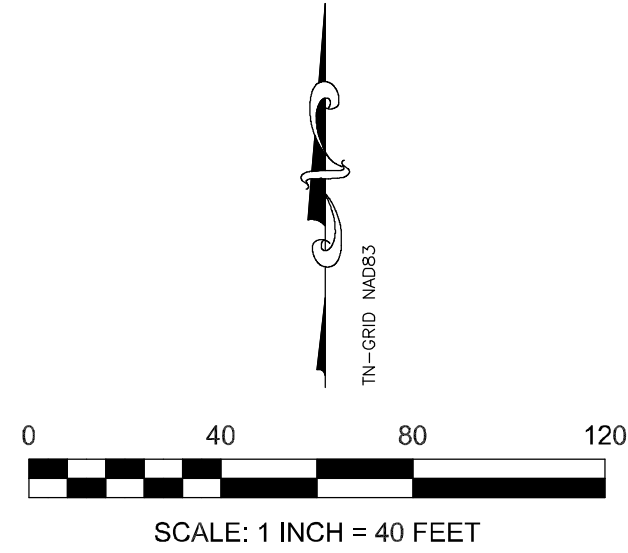


JOB NO: 23-01-1  
DATE: 04/24/23  
DRAWN: JME  
CHECKED: TER

C1

CURVE	RADIUS	ARC LENGTH	CHORD LENGTH	CHORD BEARING	DELTA ANGLE
C1	1220.91'	134.00'	133.93'	S 54°42'35" E	6°17'18"

- LEGEND**
- IR(O) o IRON ROD OLD
  - o UNMONUMENTED POINT
  - OU— OVERHEAD UTILITIES
  - P— POWER POLE
  - + GUY WIRE
  - WV v=| WATER VALVE
  - WM WATER METER
  - DRAINAGE DITCH
  - == STORM PIPE
  - HW HEAD WALL
  - LINE NOT SURVEYED



1. PROPOSED USE : MINI SELF STORAGE FACILITY
2. TOPOGRAPHIC INFORMATION FROM KGIS.
3. OFF-STREET PARKING : THERE WILL BE NO OFF STREEET PARKING.
4. CIRCULATION DIAGRAM : TURNING RADIUS PROVIDED FOR FIRE TRUCK.
5. LANDSCAPE : AREA WILL BE FENCED TO PROTECT THE SITE. LANDSCAPING WILL BE ALONG PERIMETER OF THE FENCE AS REQUIRED.
6. MANUFACTURER TO PROVIDE BUILDING FOOTPRINT.
7. MANUFACUTRER TO PROVIDE BUILDING ELEVATIONS.
8. PROPOSED SINAGE : SIGNAGE TO BE ON THE BUILDING FACE.
9. ALL DRAINAGE IS TO BE APPROVED BY KNOX COUNTY ENGINEERING.
10. NO MAIL FACILITY REQUIRED.
11. AMENITITES : NONE REQUIRED.
12. GARABAGE DUMPSTER : DUMPSTER AS REQUIRED BY KNOX COUNTY.
13. TRAFFIC IMPACT STUDY : NOT REQUIRED.
14. ALL OUTDOOR LIGHTING TO BE APPROVED BY KNOX COUNTY PLANNING AND LNOX COUNTY ENGINEERING.

CURVE	RADIUS	ARC LENGTH	CHORD LENGTH	CHORD BEARING	DELTA ANGLE
C1	1220.91'	134.00'	133.93'	S 54°42'35" E	6°17'18"

**ROMANS**  
Engineering



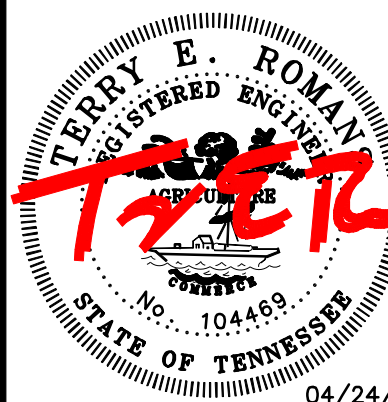
1923 Hopewell Road Knoxville, TN 37920  
Phone (865) 679-5726 romansengineering@gmail.com

PINNACLE STORAGE

KNOXVILLE, TENNESSEE

SITE LAYOUT PLAN

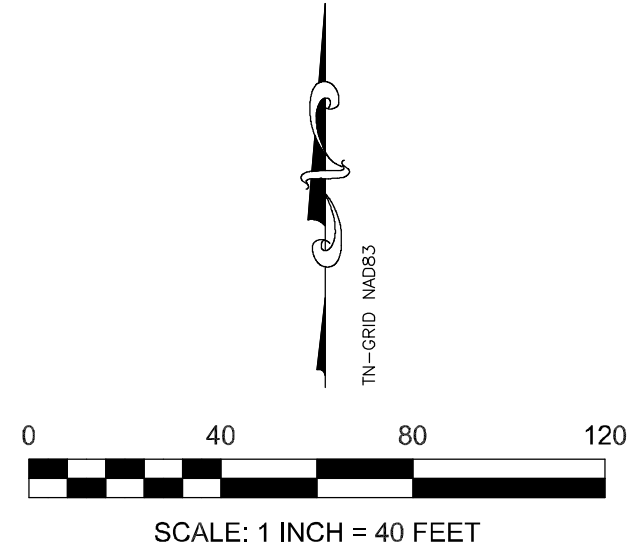
DATE:					
REVISIONS:					
NUMBER:					



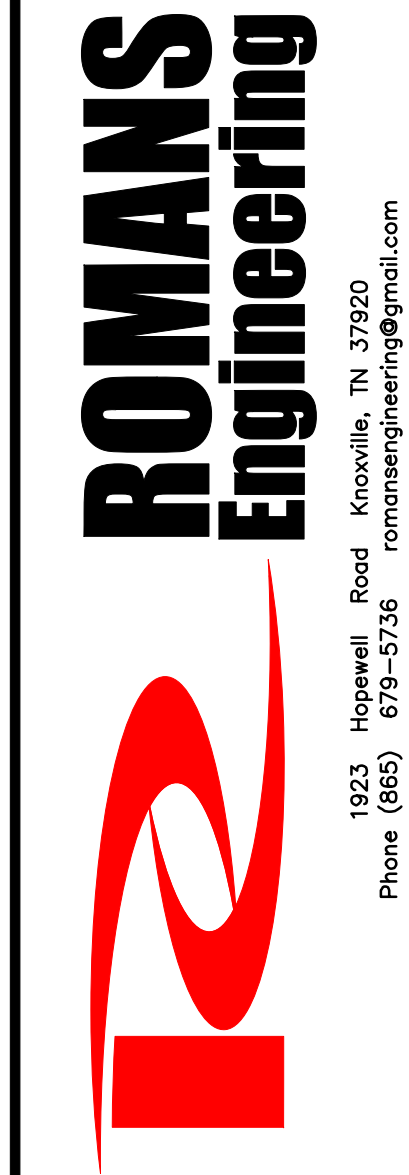
JOB NO: 23-01-1  
DATE: 04/24/23  
DRAWN: JME  
CHECKED: TER

C2

- LEGEND**
- IR(O) o IRON ROD OLD
  - o UNMONUMENTED POINT
  - OU OVERHEAD UTILITIES
  - ⌒ POWER POLE
  - + GUY WIRE
  - WV v=1 WATER VALVE
  - ⊗ WATER METER
  - DRAINAGE DITCH
  - == STORM PIPE
  - HW HEAD WALL
  - LINE NOT SURVEYED



CURVE	RADIUS	ARC LENGTH	CHORD LENGTH	CHORD BEARING	DELTA ANGLE
C1	1220.91'	134.00'	133.93'	S 54°42'35" E	6°17'18"



1923 Hopewell Road Knoxville, TN 37920  
Phone (865) 675-5726 romansengineering@gmail.com

PINNACLE STORAGE

KNOXVILLE, TENNESSEE

GRADING PLAN

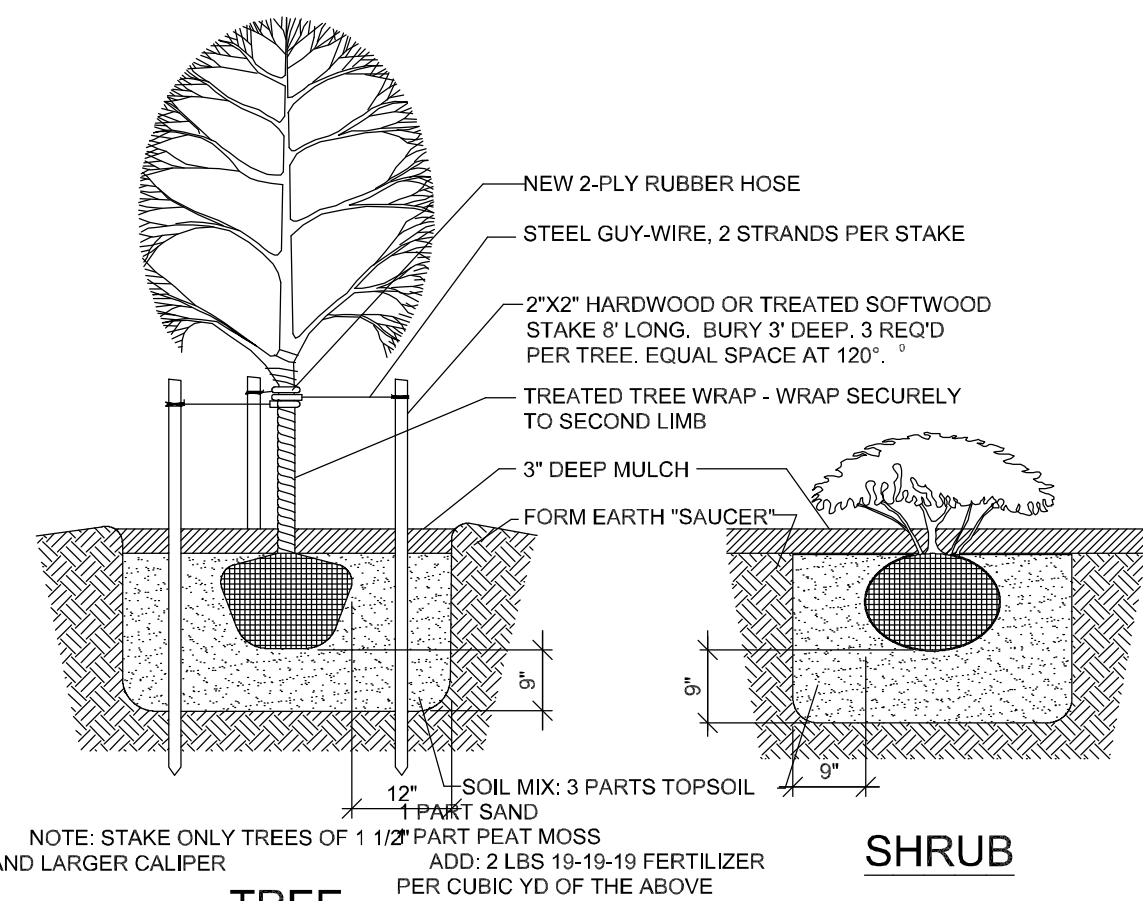
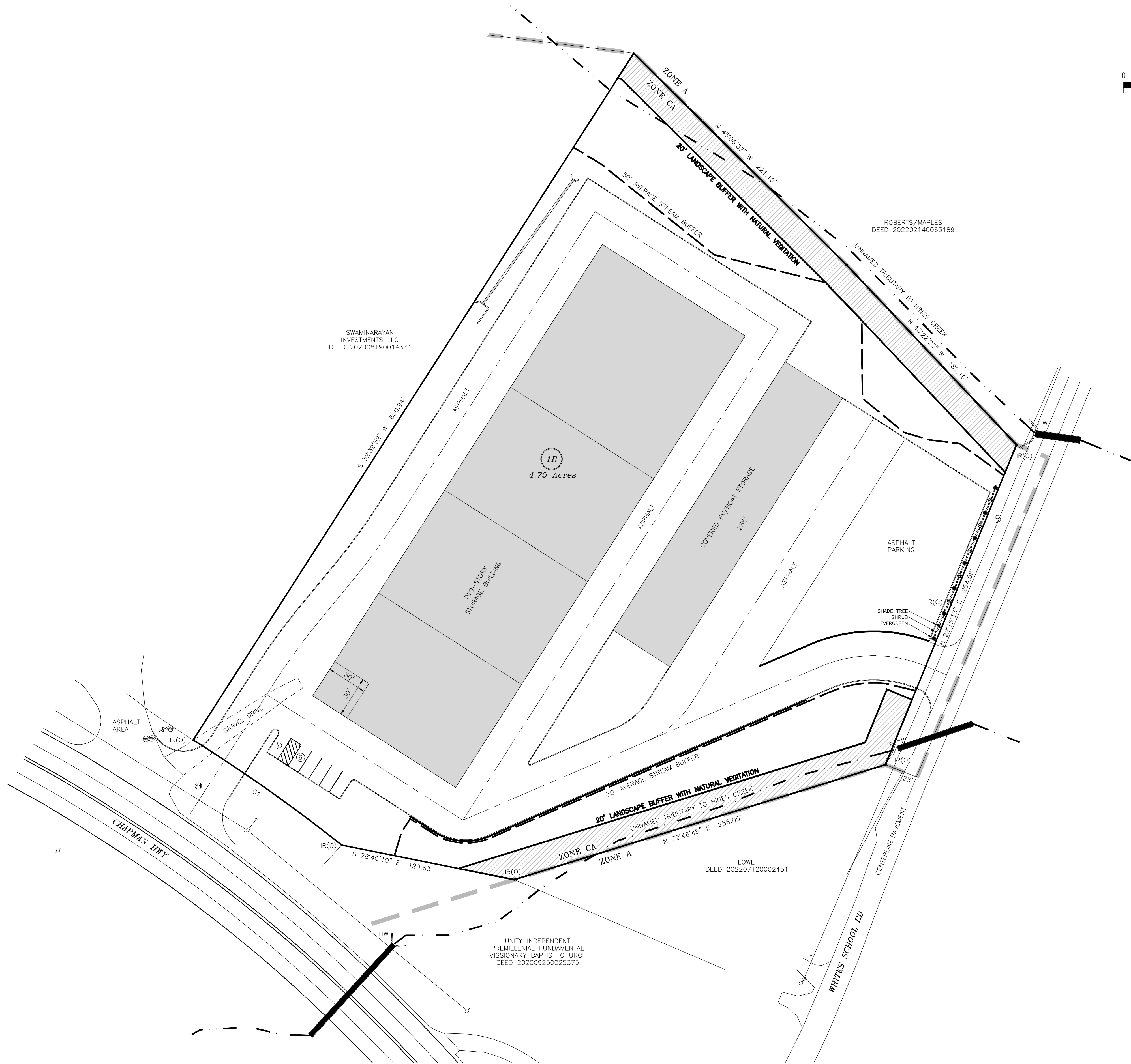
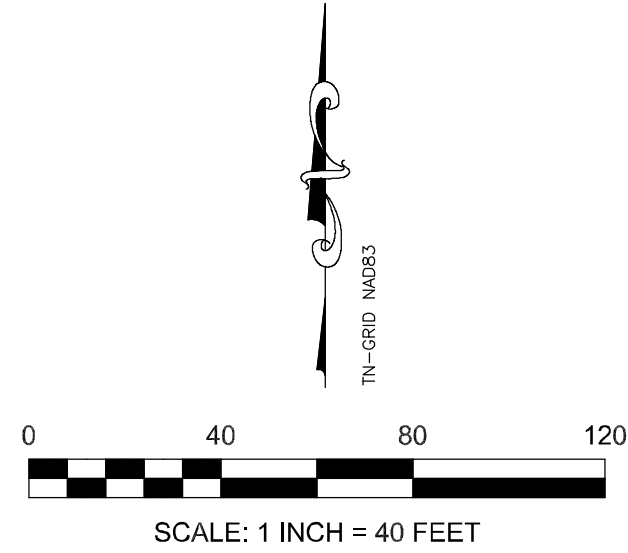
DATE:									
REVISIONS:									
NUMBER:									



JOB NO: 23-01-1  
DATE: 04/24/23  
DRAWN: JME  
CHECKED: TER

C3

- LEGEND**
- IR(O) ○ IRON ROD OLD  
○ UNMONUMENTED POINT  
—OU— OVERHEAD UTILITIES  
—C— POWER POLE  
+ GUY WIRE  
WV ⊥=| WATER VALVE  
⊗ WATER METER  
--- DRAINAGE DITCH  
--- STORM PIPE  
HW HEAD WALL  
--- LINE NOT SURVEYED



**TREE PLANTING DETAILS**  
NOT TO SCALE

- #1 GREEN & WHITE VAREGATED EUONYMUS - EUONYMUS  
#2 QUEREIFOLIA - OAK LEAF HYDRANGEA #3  
#3 GINKGO - GINKGO BILOBA (2" CALIPER - MIN. 8' TALL)  
#4 LAWNS - REBEL 2 GRASS W/STRAW

CURVE	RADIUS	ARC LENGTH	CHORD LENGTH	CHORD BEARING	DELTA ANGLE
C1	1220.91'	134.00'	133.93'	S 54°42'35" E	6°17'18"

PRELIMINARY LANDSCAPING PLAN



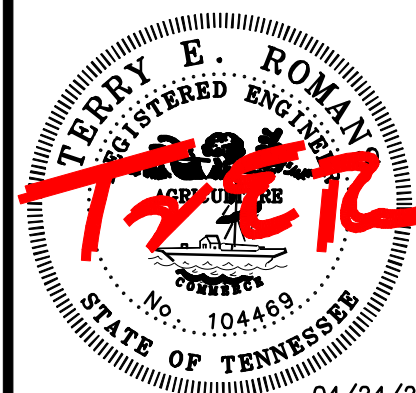
1923 Hopewell Road Knoxville, TN 37920  
Phone (865) 679-5726 romansengineering@gmail.com

PINNACLE STORAGE

KNOXVILLE, TENNESSEE

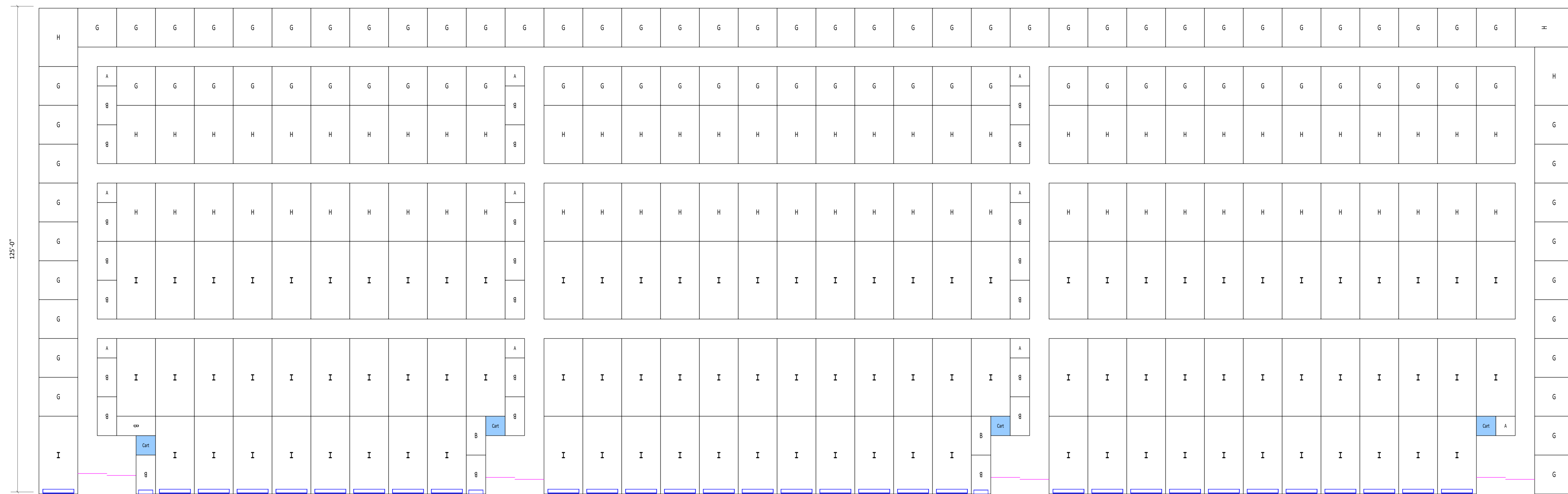
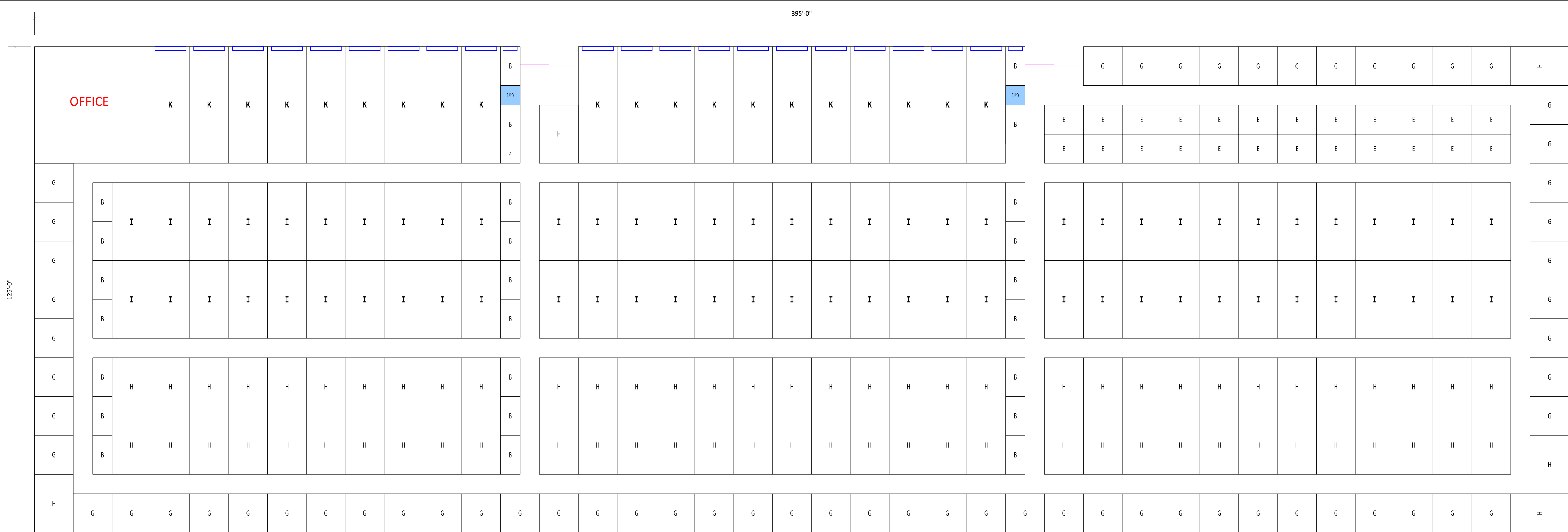
LANDSCAPING PLAN

DATE:									
REVISIONS:									
NUMBER:									



JOB NO: 23-01-1  
DATE: 04/24/23  
DRAWN: JME  
CHECKED: TER

C2



<b><i>UNIT MIX SCHEDULE</i></b>						
<b><i>UNIT TAG</i></b>	<b><i>DESCRIPTION</i></b>	<b><i>UNIT COUNT</i></b>		<b><i>UNIT TAG</i></b>	<b><i>DESCRIPTION</i></b>	<b><i>UNIT COUNT</i></b>
A	5' x 5'	0		I	10' x 20'	0
B	5' x 10'	0		J	10' x 25'	0
C	5' x 15'	0		K	10' x 30'	0
D	5' x 20'	0		L	5x10 Cart	0
E	7.5' x 10'	0		M	15' x 20'	0
F	8' x 10'	0		N	15' x 25'	0
G	10' x 10'	0		O	15' x 30'	0
H	10' x 15'	0		P	15'x50'	0

FOR APPROVAL ONLY

NOT FOR FIELD USE

SIGNATURE \_\_\_\_\_

242


DATE:	4/24/23
DRAWN BY:	Kevin Neal
SCALE:	



PROJECT NAME:	Chapman Road
PROJECT ADDRESS:	Knoxville TN
OWNER:	RHD
SHEET TITLE:	

## DESCRIPTION

The Galleon™ LED luminaire delivers exceptional performance in a highly scalable, low-profile design. Patented, high-efficiency AccuLED Optics™ system provides uniform and energy conscious illumination to walkways, parking lots, roadways, building areas and security lighting applications. IP66 rated and UL/cUL Listed for wet locations.

## SPECIFICATION FEATURES

### Construction

Extruded aluminum driver enclosure thermally isolated from Light Squares for optimal thermal performance. Heavy-wall, die-cast aluminum end caps enclose housing and die-cast aluminum heat sinks. A unique, patent pending interlocking housing and heat sink provides scalability with superior structural rigidity. 3G vibration tested and rated. Optional tool-less hardware available for ease of entry into electrical chamber. Housing is IP66 rated.

### Optics

Patented, high-efficiency injection-molded AccuLED Optics technology. Optics are precisely designed to shape the distribution maximizing efficiency and application spacing. AccuLED Optics create consistent distributions with the scalability to meet customized application requirements. Offered standard in 4000K (+/- 275K) CCT 70 CRI. Optional 3000K, 5000K and 6000K CCT.

### Electrical

LED drivers are mounted to removable tray assembly for ease of maintenance. 120-277V 50/60Hz,

347V 60Hz or 480V 60Hz operation. 480V is compatible for use with 480V Wye systems only. Standard with 0-10V dimming. Shipped standard with Cooper Lighting Solutions proprietary circuit module designed to withstand 10kV of transient line surge. The Galleon LED luminaire is suitable for operation in -40°C to 40°C ambient environments. For applications with ambient temperatures exceeding 40°C, specify the HA (High Ambient) option. Light Squares are IP66 rated. Greater than 90% lumen maintenance expected at 60,000 hours. Available in standard 1A drive current and optional 600mA, 800mA and 1200mA drive currents (nominal).

### Mounting

**STANDARD ARM MOUNT:** Extruded aluminum arm includes internal bolt guides allowing for easy positioning of fixture during mounting. When mounting two or more luminaires at 90° and 120° apart, the EA extended arm may be required. Refer to the arm mounting requirement table. Round pole adapter included. For wall mounting, specify wall mount bracket option. **QUICK MOUNT**

**ARM:** Adapter is bolted directly to the pole. Quick mount arm slide into place on the adapter and is secured via two screws, facilitating quick and easy installation. The versatile, patent pending, quick mount arm accommodates multiple drill patterns ranging from 1-1/2" to 4-7/8". Removal of the door on the quick mount arm enables wiring of the fixture without having to access the driver compartment. A knock-out enables round pole mounting.

### Finish

Housing finished in super durable TGIC polyester powder coat paint, 2.5 mil nominal thickness for superior protection against fade and wear. Heat sink is powder coated black. Standard housing colors include black, bronze, grey, white, dark platinum and graphite metallic. RAL and custom color matches available.

### Warranty

Standard five-year warranty. Optional ten-year warranty, please see your Cooper Lighting Solutions Streetworks sales representative for more information.



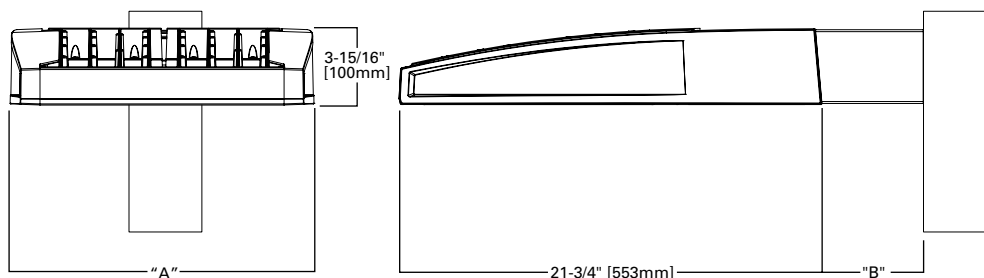
## GAN GALLEON LED

1-10 Light Squares

Solid State LED

AREA / ROADWAY LUMINAIRE

## DIMENSIONS

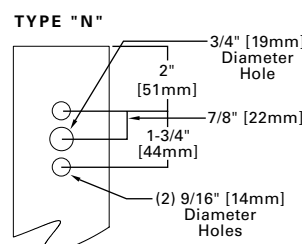


## DIMENSION DATA

Number of Light Squares	"A" Width	"B" Standard Arm Length	"B" Optional Arm Length <sup>1</sup>	Weight with Arm (lbs.)	EPA with Arm <sup>2</sup> (Sq. Ft.)
1-4	15-1/2" (394mm)	7" (178mm)	10" (254mm)	33 (15.0 kgs.)	0.96
5-6	21-5/8" (549mm)	7" (178mm)	10" (254mm)	44 (20.0 kgs.)	1.00
7-8	27-5/8" (702mm)	7" (178mm)	13" (330mm)	54 (24.5 kgs.)	1.07
9-10	33-3/4" (857mm)	7" (178mm)	16" (406mm)	63 (28.6 kgs.)	1.12

**NOTES:** 1. Optional arm length to be used when mounting two fixtures at 90° on a single pole. 2. EPA calculated with optional arm length.

## DRILLING PATTERN



## CERTIFICATION DATA

UL/cUL Wet Location Listed  
ISO 9001  
LM79 / LM80 Compliant  
3G Vibration Rated  
IP66 Rated  
DesignLights Consortium® Qualified\*

## ENERGY DATA

**Electronic LED Driver**  
>0.9 Power Factor  
<20% Total Harmonic Distortion  
120V-277V 50/60Hz  
347V & 480V 60Hz  
-40°C Min. Temperature  
40°C Max. Temperature  
50°C Max. Temperature (HA Option)

# SLING Series

SLENDER WALLPACK

## FEATURES

- Two sizes for a variety of applications
- Ranges from 21W to 80W with up to 8000 lumens
- SG1 Series replaces from 100W-150W HID; SG2 Series replaces from 150W-250W HID
- Comfort lens available as an option or accessory provides glare control and enhanced uniformity
- Knuckle and trunnion accessory mounting kits available for flood applications
- IP65 and certified to UL 1598 for use in wet locations up to 40°C ambient
- DLC (DesignLights Consortium Qualified - see [www.designlights.org](http://www.designlights.org))



\*3000K and warmer CCTs only

## SPECIFICATIONS

### HOUSING

- Rugged die-cast aluminum housing with corrosion resistant powder coat finish
- Heating dissipating fins provide superior thermal performance extending the life of the electronic components
- Impact resistant tempered glass offers zero uplight
- Comfort lens available as an option or accessory to reduce glare (7-10% lumen reduction) and provide better uniformity

### OPTICS

- 3000K, 4000K and 5000K CCT nominal with 70 CRI
- Smaller SG1 housing has 2 LEDs, larger SG2 housing has 3 LEDs

### INSTALLATION

- Side hinge allows for easy installation and wiring
- Side movement avoids damage to the lens and helps prevent injury common in drop down hinge designs
- Mounts to 4" junction box and includes a gasket to help seal electrical connections
- Four 1/2" threaded conduits hubs for surface conduit provided

### ELECTRICAL

- 120-277V, 50/60Hz electronic drivers
- 347V and 480V available in large SG2 housing
- 10KA surge protection included

### OPTIONS/CONTROLS

- Button photocontrol for dusk to dawn energy savings. Stock versions include 120V-277V PC with a cover which provides a choice to engage photocontrol or not. PC is installed in top hub
- Occupancy sensor available for on/off and dimming control in larger SG2 housing
- SiteSync™ wireless lighting control delivers flexible control strategies for reducing power consumption and minimizing maintenance costs while delivering the right light levels with a simple and affordable wireless solution. See ordering information or visit [www.hubbelllighting.com/sitesync](http://www.hubbelllighting.com/sitesync) for more details
- Battery backup options available in larger SG2 housing rated for either 0° C or -30° C. Performance exceeds NEC requirement providing 1 fc minimum over 10'x10' at 11' mounting height



### RELATED PRODUCTS

- θ [LNC Litepak](#)
- θ [LNC2 Litepak](#)
- θ [LNC3 Litepak](#)
- θ [LNC4 Litepak](#)
- θ [GeoPak](#)
- θ [GeoPak2](#)

### CERTIFICATIONS

- DesignLights Consortium® (DLC) qualified. Please refer to the DLC website for specific product qualifications at [www.designlights.org](http://www.designlights.org)
- Listed to UL1598 for use in wet location, listed for -40°C to 40°C applications
- IDA approved with zero uplight for 3000K and warmer CCTs
- IP65

### WARRANTY

- 5 year limited warranty
- See [HLI Standard Warranty](#) for additional information

KEY DATA	
Lumen Range	2263-8079
Wattage Range	21-80
Efficacy Range (LPW)	101-113
Fixture Projected Life (Hours)	L70>50K
Weights lbs. (kg)	4.3-11 (2.0-5.0)

DATE:	LOCATION:
TYPE:	PROJECT:
CATALOG #:	

# SLING SERIES

SLENDER WALLPACK

## ORDERING GUIDE

Example: SG1-20-3K7-FT-UNV-DBT-PCU-CS

CATALOG #

## ORDERING INFORMATION

Housing	CCT/CRI	Distribution	Voltage	Color/Finish	Control Options	Options
SG1-10 Size 1, 10W	3K7 3000K, 70 CRI	FT Fwd Throw	UNV 120V-277V	BLT Black Matte Textured	PCU Universal Button Photocontrol (120-277V)	CS Comfort Lens
SG1-20 Size 1, 20W	4K7 4000K, 70 CRI		120 120V	BLS Black Gloss Smooth	SCP <sup>1,2,3</sup> Occupancy Sensor Programmable (Dim)	E <sup>1,2</sup> Battery 0°C
SG1-30 Size 1, 30W	5K7 5000K, 70 CRI		277 277V	DBT Dark Bronze Matte Textured	SWP <sup>1,2</sup> SiteSync Pre-commission	EH <sup>1,2</sup> Battery w/ heater -20°
SG1-40 Size 1, 40W			UHV 347V-480V	DBS Dark Brone Gloss Smooth	SWPM <sup>1,2</sup> SiteSync Pre-commission w/ Sensor	
SG2-50 Size 2, 50W				GTT Graphite Matte Textured	Specify MTG HT for SCO/SCP & SWPM	
SG2-80 Size 2, 80W				LGS Light Grey Gloss Smooth	8F Up to 8'	
				PSS Platinum Silver Smooth	20F Up to 20'	
				WHT White Matte Textured		
				WHS White Gloss Smooth		
				VGT Verde Green Textured		
				Color Option		
				CC Custom Color		

Contractor to provide remote mount 90 minute emergency battery or inverter

### Notes:

- Available in SG2 only, UHV available in SG2-50 only
- Sensor controls & battery backup can not be used with flood accessory or kit or for inverted/up mounting, 120-227V only for SCO/SCP, 120 or 277 only for SWP, SWPM, E & EH
- Must order minimum of one remote control to program dimming settings, 0-10V fully adjustable dimming with automatic daylight calibration and different time delay settings, 120-277V only

## STOCK ORDERING INFORMATION

Catalog Number	CCT/CRI	Wattage	Mounting Height	Color	Color	Delivered Lumens	LPW	Weight lbs. (kg)
SG1-10-PCU	5000K/70	11W	8-12ft	120-277V	Dark Bronze	1349	122	4.3 (2.0)
SG1-10-4K-PCU	4000K/70	11W	8-12ft	120-277V	Dark Bronze	1424	129	4.3 (2.0)
SG1-20-PCU	5000K/70	21W	8-12ft	120-277V	Dark Bronze	2263	108	4.3 (2.0)
SG1-20-4K-PCU	4000K/70	21W	8-12ft	120-277V	Dark Bronze	2310	110	4.3 (2.0)
SG1-30-PCU	5000K/70	29W	10-15ft	120-277V	Dark Bronze	3270	113	4.3 (2.0)
SG1-30-4K-PCU	4000K/70	29W	10-15ft	120-277V	Dark Bronze	3060	105	4.3 (2.0)
SG1-40-PCU	5000K/70	38W	10-15ft	120-277V	Dark Bronze	4008	105	4.3 (2.0)
SG1-40-4K-PCU	4000K/70	38W	10-15ft	120-277V	Dark Bronze	4070	106	4.3 (2.0)
SG2-50-PCU	5000K/70	51W	12-18ft	120-277V	Dark Bronze	5548	110	11 (5.0)
SG2-50-4K-PCU	4000K/70	51W	12-18ft	120-277V	Dark Bronze	5526	109	11 (5.0)
SG2-80-PCU	5000K/70	80W	15-25ft	120-277V	Dark Bronze	8061	101	11 (5.0)
SG2-80-4K-PCU	4000K/70	80W	15-25ft	120-277V	Dark Bronze	8079	101	11 (5.0)

## FEATURES

- Includes self-diagnostic/self-test feature to monitor proper operation
- Quick installation
- Universal 120-277VAC input, 60Hz.
- Includes long-life 7.2V Nickel Cadmium battery for UL recognized 90 minute operation
- Full re-charge within 24 hours
- Provided with water-proof test switch and AC-On indicator
- 0°C to 50°C Standard Model, -25°C to 50°C with optional heater
- UL924 and Wet Location Listed



## SPECIFICATIONS

### DESCRIPTION

- The CUSO Series is an architectural, low-profile outdoor light, offering "normally On" AC and emergency lighting with powerful LED illumination
- The housing is fully sealed and gasketed, and has an IP65 rating
- Designed for wall mounting with universal K/O pattern in back-plate for easy installation to most standard size junction boxes
- Includes a single ½" NPT conduit entry in the top, center of the housing
- Illumination provided by 8 high power LEDs which achieve 1,600 lumens in AC and 600 lumens in emergency
- Available in 3000K or 4000K color temperature

- Models at 3000K include a photo-sensor and PIR(passive infra-red) motion detector which cannot be altered
- The unit will only turn on in AC mode when motion is detected. Models at 4000K include a photo-sensor and do not include motion detector
- The unit can be controlled by a switch, timer or the photo-cell

### APPLICATION

- The CUSO Series can be applied in areas that are susceptible to rain and severe moisture like parking decks, and outdoor commercial applications to meet all Path of Egress requirements

## ORDERING GUIDE

Catalog Number	Description
CUSO DB	Outdoor AC/EM, 3000K, Photo-sensor and PIR Motion Detect, Self-Diag., Dark Bronze
CUSO DB-H	Outdoor AC/EM, 3000K, Photo-sensor and PIR Motion Detect, Self-Diag., Dark Bronze, Heater
CUSO BK	Outdoor AC/EM, 3000K, Photo-sensor and PIR Motion Detect, Self-Diag., Black
CUSO BK-H	Outdoor AC/EM, 3000K, Photo-sensor and PIR Motion Detect, Self-Diag., Black, Heater
CUSO WH	Outdoor AC/EM, 3000K, Photo-sensor and PIR Motion Detect, Self-Diag., White
CUSO WH-H	Outdoor AC/EM, 3000K, Photo-sensor and PIR Motion Detect, Self-Diag., White, Heater
CUSO4DB-ND	Outdoor AC/EM, 4000K, Photo-sensor, Self-Diag., Dark Bronze
CUSO4DB-H-ND	Outdoor AC/EM, 4000K, Photo-sensor, Self-Diag., Dark Bronze, Heater
CUSO4BK-ND	Outdoor AC/EM, 4000K, Photo-sensor, Self-Diag., Black
CUSO4BK-H-ND	Outdoor AC/EM, 4000K, Photo-sensor, Self-Diag., Black, Heater
CUSO4WH-ND	Outdoor AC/EM, 4000K, Photo-sensor, Self-Diag., White
CUSO4WH-H-ND	Outdoor AC/EM, 4000K, Photo-sensor, Self-Diag., White, Heater

## tradeSELECT®



### RELATED PRODUCTS

- ✂ [Exit & Message Signs](#)
- ✂ [Emergency Lighting Units](#)
- ✂ [Battery Packs](#)
- ✂ [Remote Heads & Fixtures](#)

### COMPLIANCES

- UL924 Listed for Wet Location
- NFPA 101
- NFPA 70
- OSHA

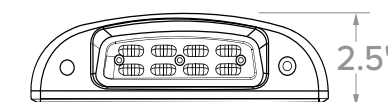
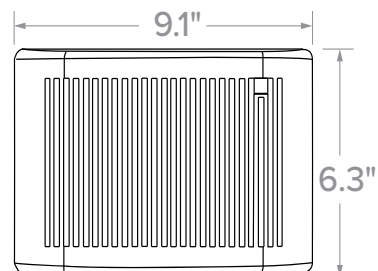
### WARRANTY

- 5 year full unit warranty
- See [HLI Standard Warranty](#) for additional information

## ENERGY CONSUMPTION

	Max.	Max. with heater
120VAC, 60Hz	3.59W	3.40W
277VAC, 60Hz	3.59W	3.40W

## DIMENSIONS



Single Carton Weight	4 lbs.
Master Carton Quantity	6 each