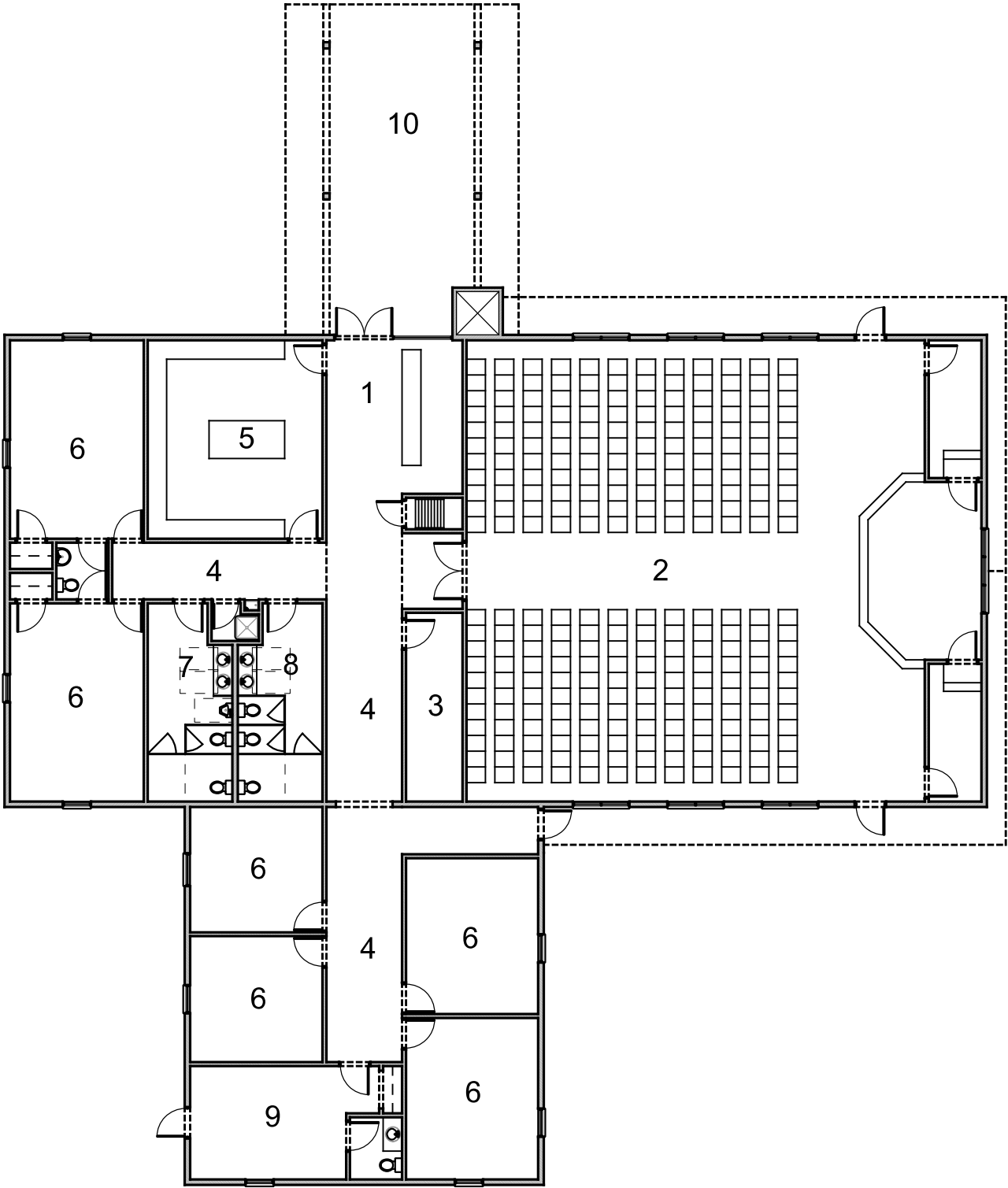


- 1. ENTRY
- 2. SANCTUARY
- 3. MECHANICAL
- 4. HALLWAY
- 5. KITCHEN
- 6. CLASSROOM
- 7. MEN'S RESTROOM
- 8. WOMEN'S RESTROOM
- 9. PASTOR'S OFFICE
- 10. COVERED DROP OFF AREA



1
A2

FLOOR PLAN
1/16" = 1'-0"

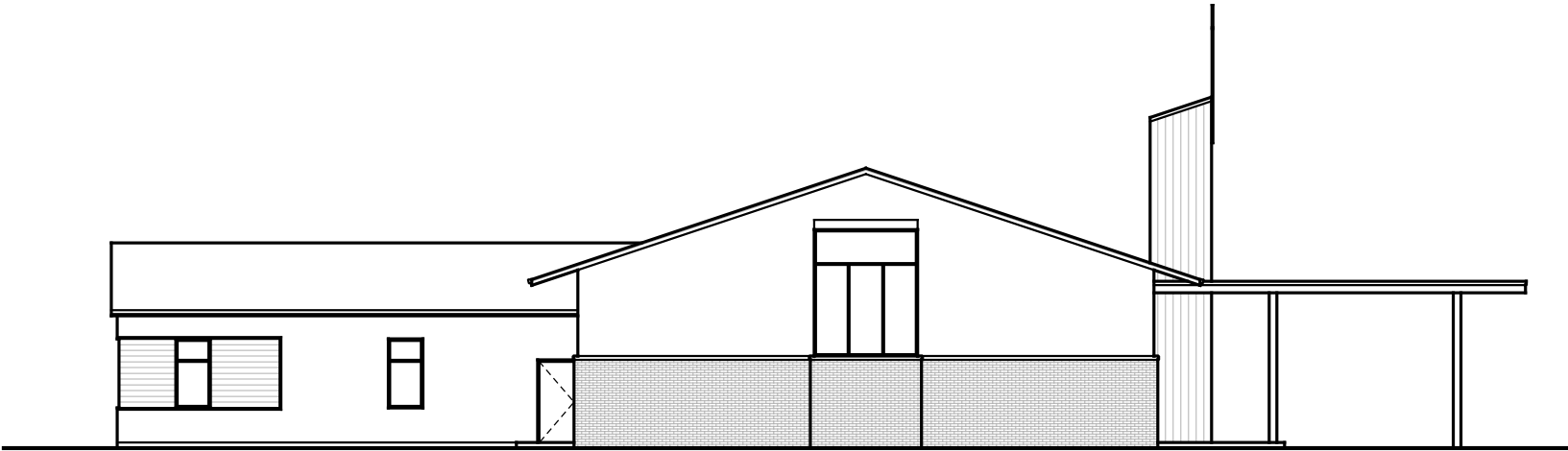
A New Facility for
Kingdom Faith Church
4602 Millertown Pike Knoxville, TN

Project Number: 19003
Issue Date: 03.25.19

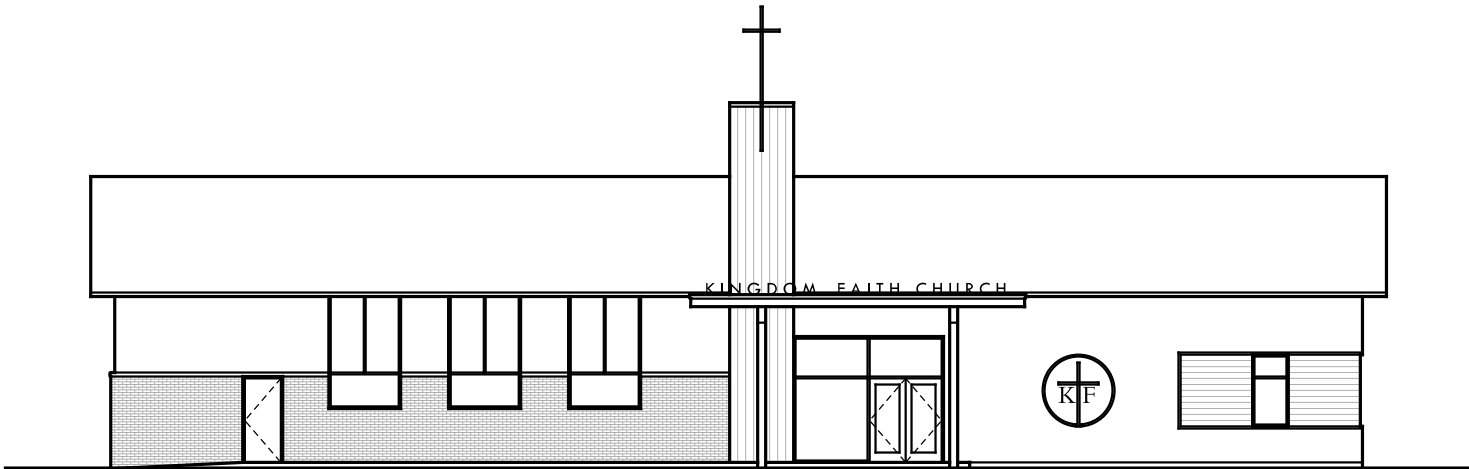
Drawn By: CK
Approved By: GRS
Project Manager: CK
Principal: GRS

This drawing is the property of
SMEE +BUSBY ARCHITECTS INC.
and is not to be reproduced without
prior written authorization. This
drawing is intended to be used only for
the project and site identified.
All design information are copyright
© SMEE +BUSBY ARCHITECTS INC.

Floor Plan



1 EAST ELEVATION
A3 1/16" = 1'-0"



2 NORTH ELEVATION
A3 1/16" = 1'-0"

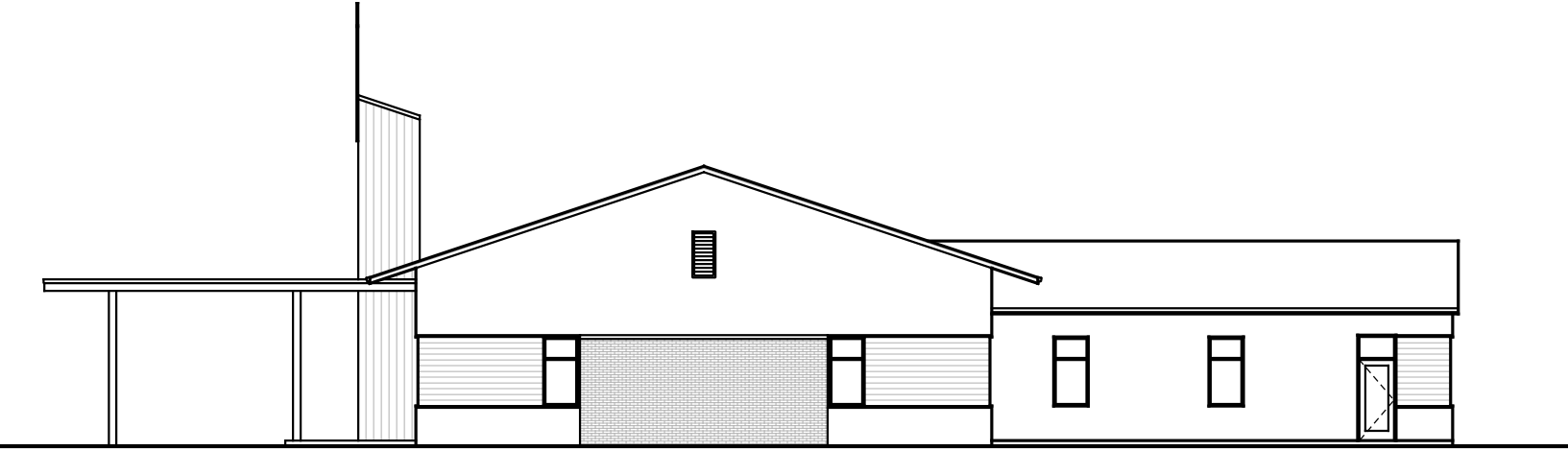
A New Facility for
Kingdom Faith Church
4602 Millertown Pike Knoxville, TN

Project Number: 19003
Issue Date: 03.25.19

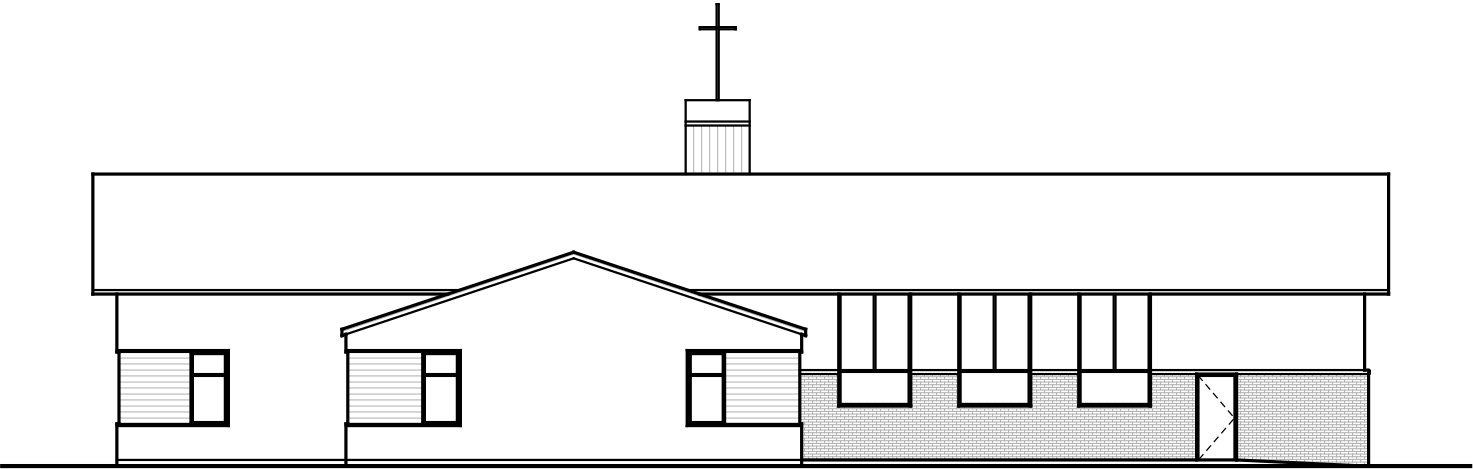
Drawn By: CK
Approved By: GRS
Project Manager: CK
Principal: GRS

This drawing is the property of
SMEE + BUSBY ARCHITECTS INC.
and is not to be reproduced without
prior written authorization. This
drawing is intended to be used only for
the project and site identified.
All design information are copyright
© SMEE + BUSBY ARCHITECTS INC.

Elevations



1 WEST ELEVATION
A4 1/16" = 1'-0"



2 SOUTH ELEVATION
A4 1/16" = 1'-0"

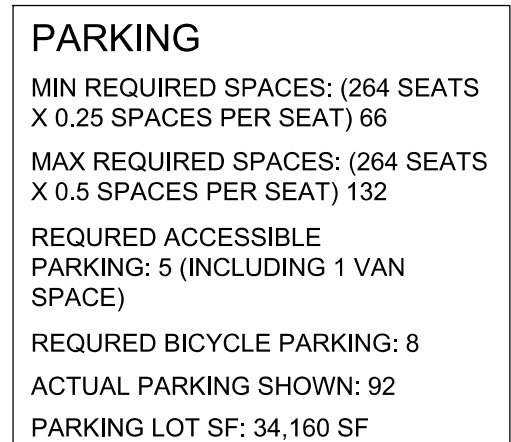
A New Facility for
Kingdom Faith Church
4602 Millertown Pike Knoxville, TN

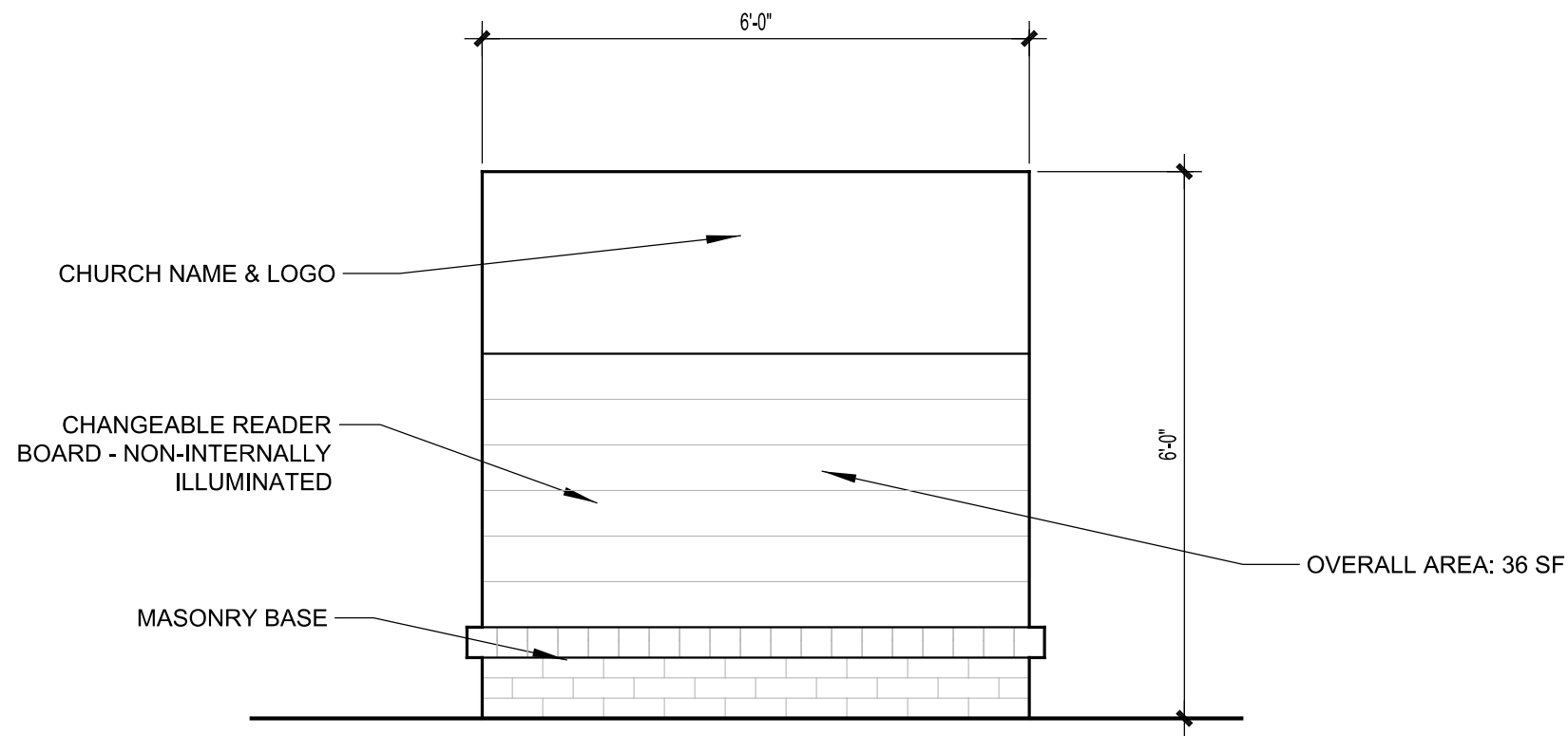
Project Number: 19003
Issue Date: 03.25.19

Drawn By: CK
Approved By: GRS
Project Manager: CK
Principal: GRS

This drawing is the property of
SMEE +BUSBY ARCHITECTS INC.
and is not to be reproduced without
prior written authorization. This
drawing is intended to be used only for
the project and site identified.
All design information are copyright
© SMEE +BUSBY ARCHITECTS INC.

Elevations





1
A5

SIGN ELEVATION

1/2" = 1'-0"

APPROXIMATE PROPOSED SIGNAGE

A New Facility for
Kingdom Faith Church
4602 Millertown Pike Knoxville, TN

Project Number: 19003
Issue Date: 04.24.19

Drawn By: CK
Approved By: GRS
Project Manager: CK
Principal: GRS

This drawing is the property of
SMEE +BUSBY ARCHITECTS INC.
and is not to be reproduced without
prior written authorization. This
drawing is intended to be used only for
the project and site identified.
All design information are copyright
© SMEE +BUSBY ARCHITECTS INC.

Signage