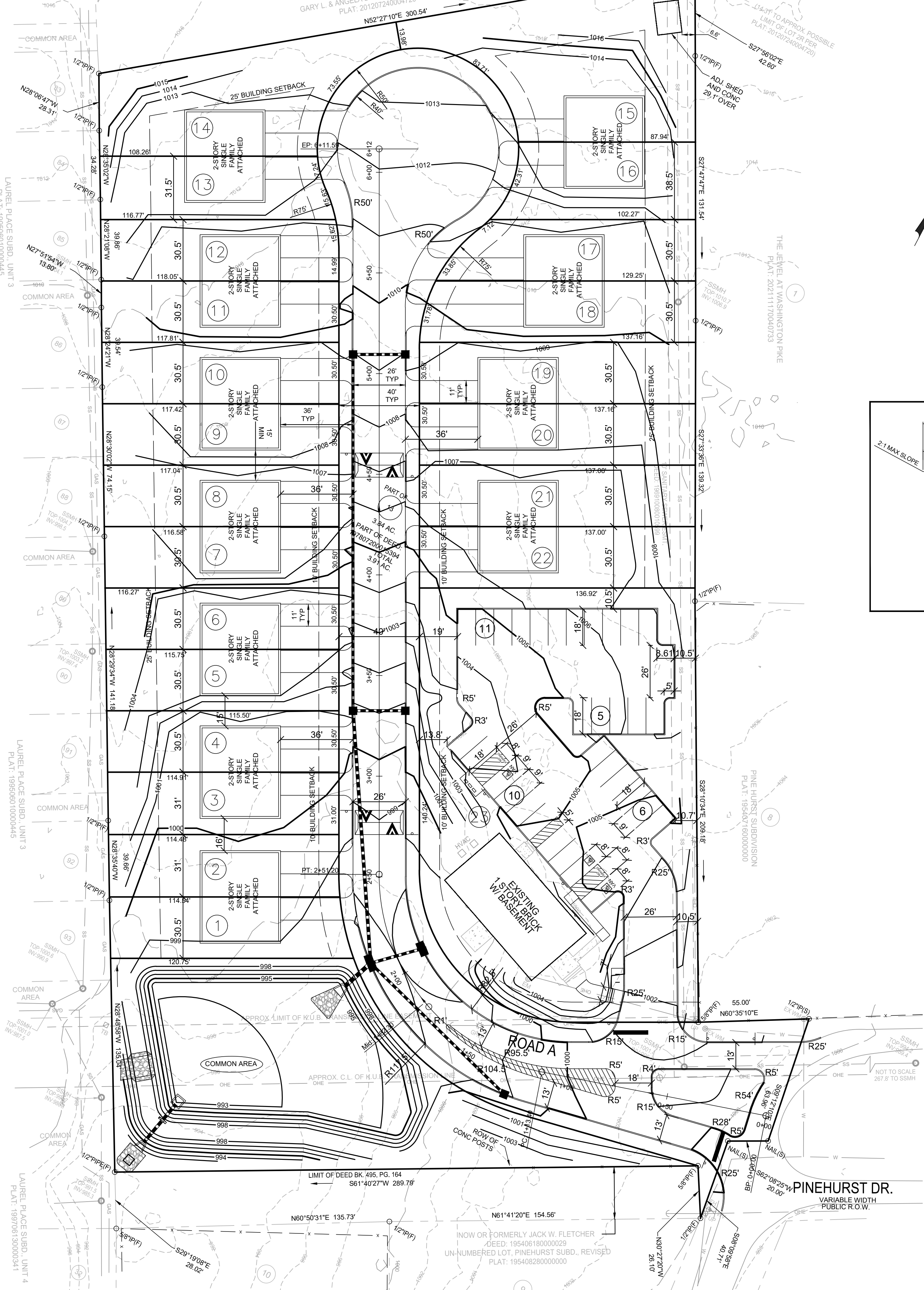


5-SA-26-C / 5-D-26-SU  
Rev. 04.20.2026

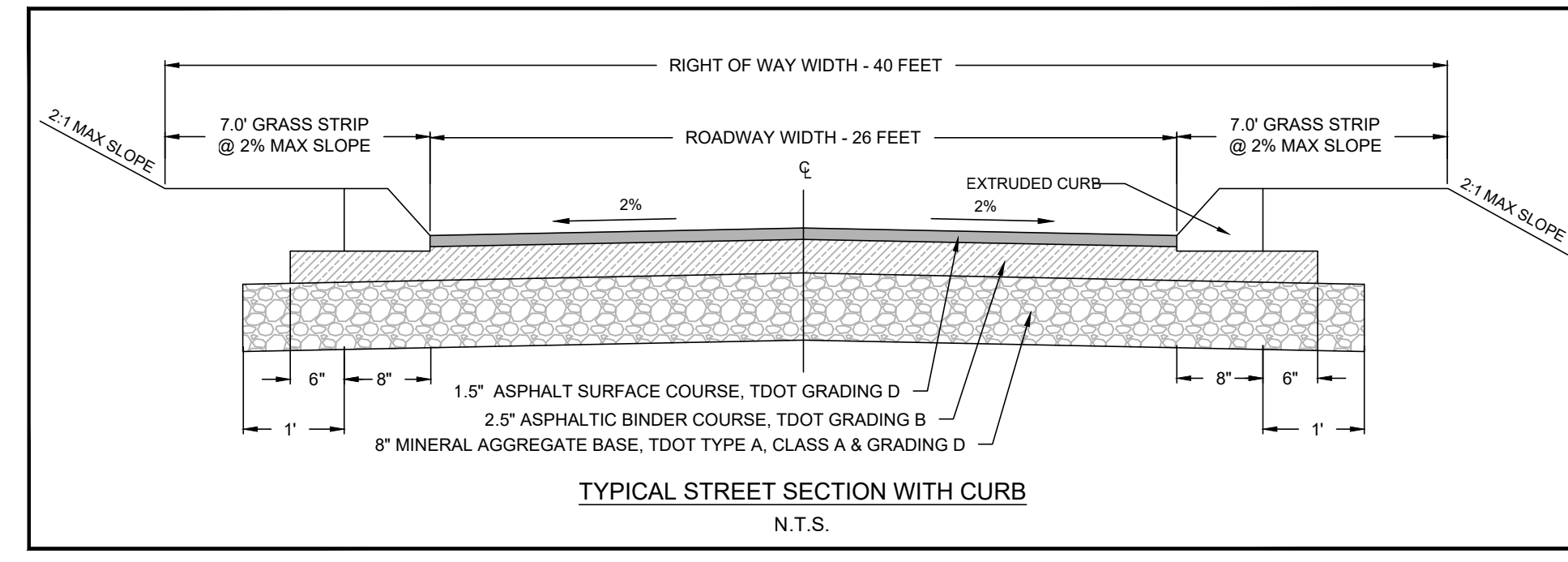
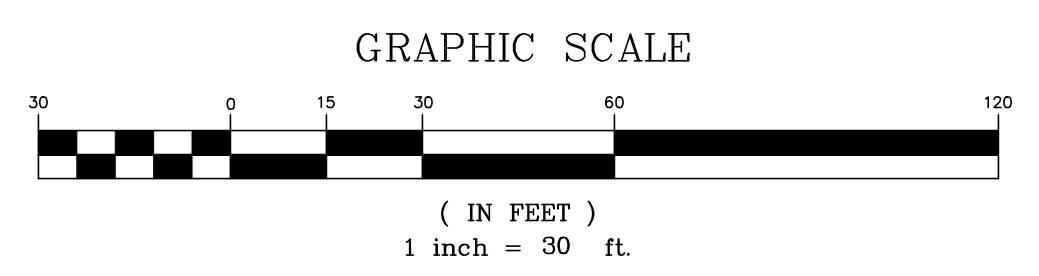
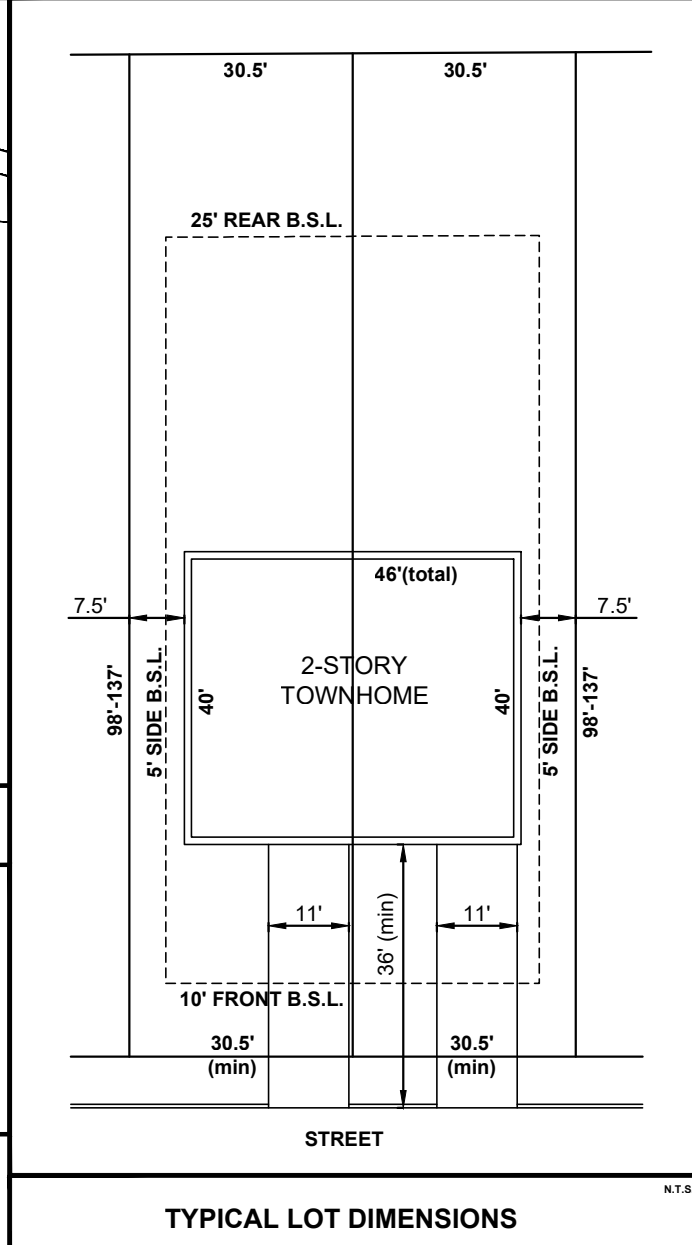
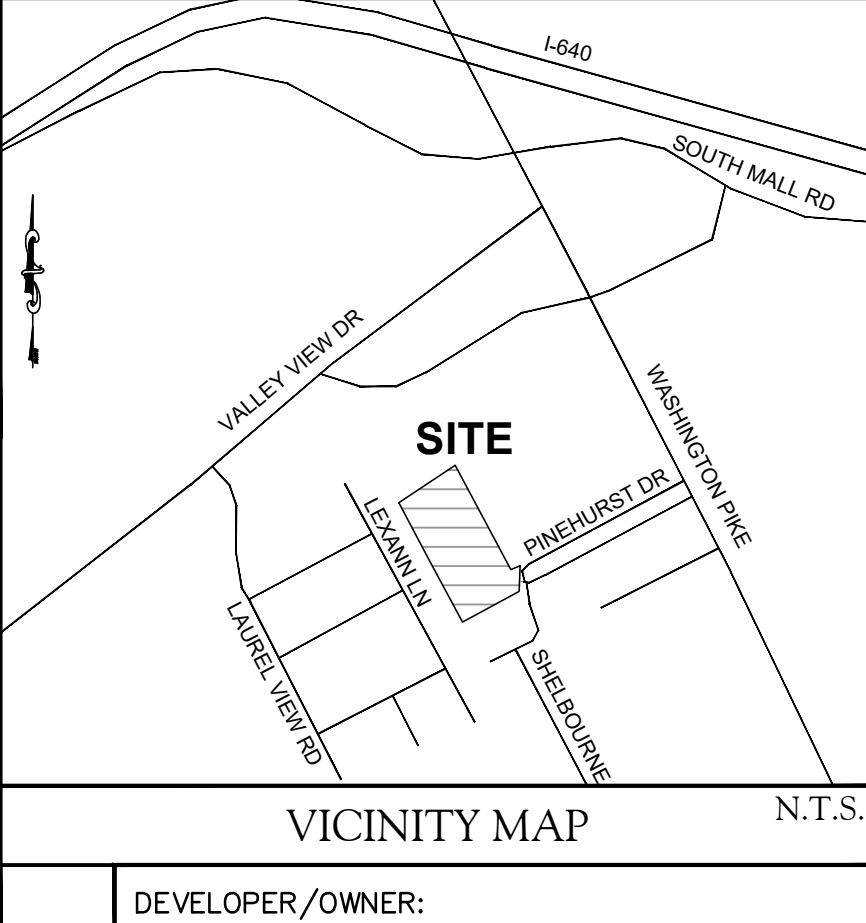


**SITE PROPERTY DATA:**

LOT AREA:	3.91 ACRES
ZONING:	RN-4 - GENERAL RESIDENTIAL NEIGHBORHOOD (PENDING)
BUILDING SETBACKS:	
FRONT:	10'
SIDE:	5'
CORNER SIDE:	12'
REAR:	25'
CHURCH LOT MAXIMUM IMPERVIOUS OF 60% REQUIRED MAXIMUM: 28,490SF x 60% = PROVIDED:	17,094 SF 16,946 SF

**SITE PARKING DATA:**

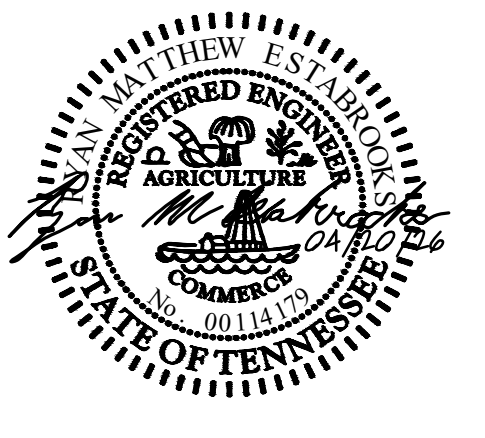
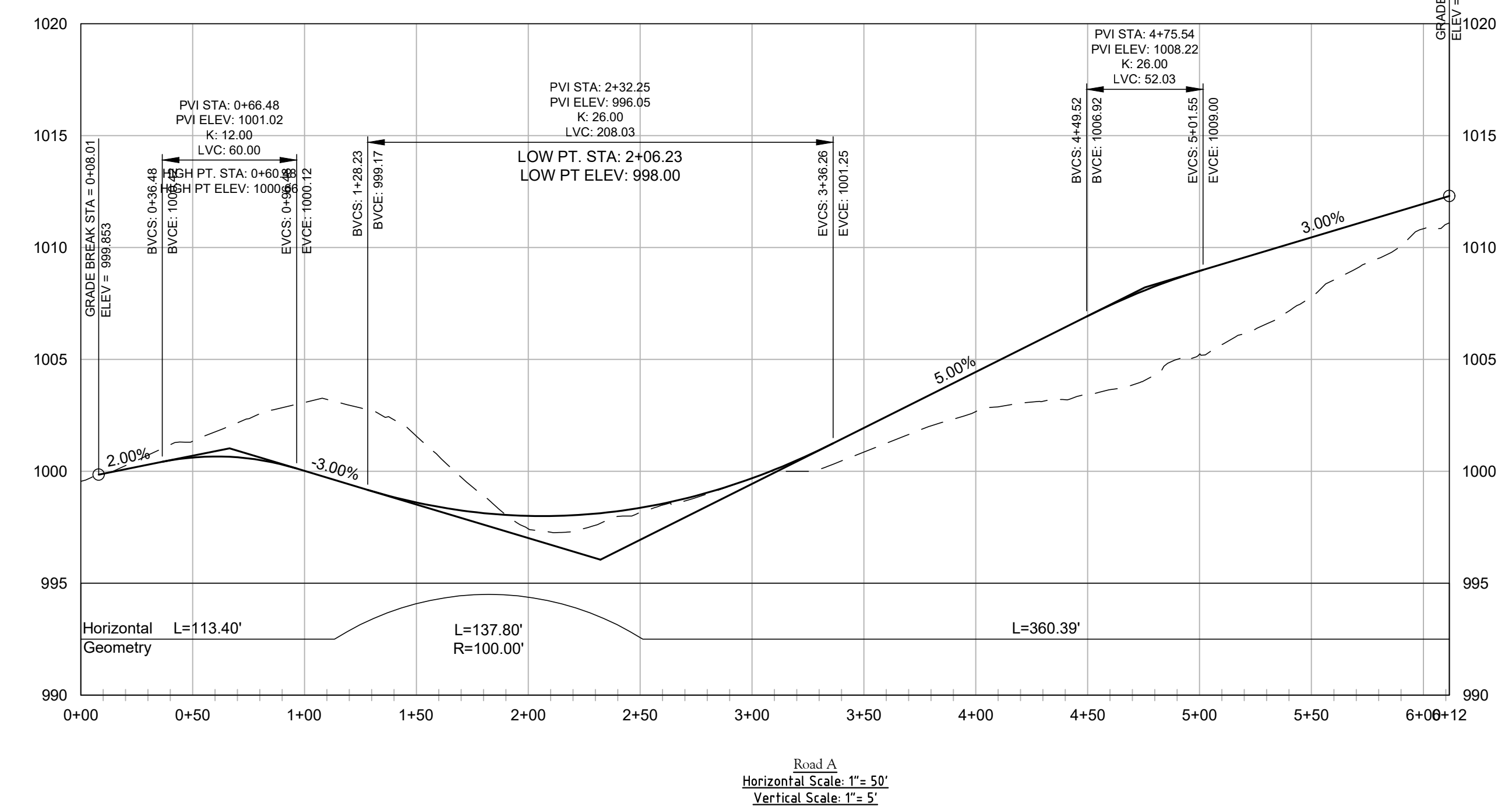
CHURCH FLOOR AREA:	2,370 S.F.
PARKING SPACES REQUIRED: PLACE OF WORSHIP: 25 TO 50 PER SEAT IN MAIN ASSEMBLY (80 SEATS)	20 TO 40 SPACES
TOTAL STANDARD SPACES PROVIDED:	29 SPACES
TOTAL ACCESSIBLE SPACES PROVIDED:	3 SPACES
TOTAL SPACES PROVIDED:	32 SPACES
BICYCLE PARKING REQUIRED: 0.50 PARKING SPACES => 4 BICYCLE SPACES	4 SPACES
BICYCLE SPACES PROVIDED:	4 SPACES



LOT #	SF
COMMON AREA	18,204
1	3,568
2	3,543
3	3,556
4	3,511
5	3,524
6	3,537
7	3,549
8	3,569
9	3,575
10	3,587
11	3,598
12	3,597
13	3,530
14	6,395
15	8,467
16	3,540
17	3,590
18	4,097
19	4,184
20	4,182
21	4,180
22	4,177
23	28,490

CERTIFICATE OF CONCEPT PLAN  
I hereby certify that I am a registered engineer, licensed to practice engineering under the laws of the State of Tennessee. I further certify that the plan and accompanying drawings, documents and statements conform to all applicable provisions of the Knoxville-Knox County Subdivision Regulations except as has been itemized and described in a report filed with the Metropolitan Planning Commission.

Registered Engineer: *Bryan M. Eshelbacher*  
Tennessee Certificate No. 18179



Concept Plan of  
**Residential Development**  
4325 Pinehurst Drive  
Knoxville, Tennessee 37917  
City Ward: 33, Block: 33870, Parcel: 059NC00101

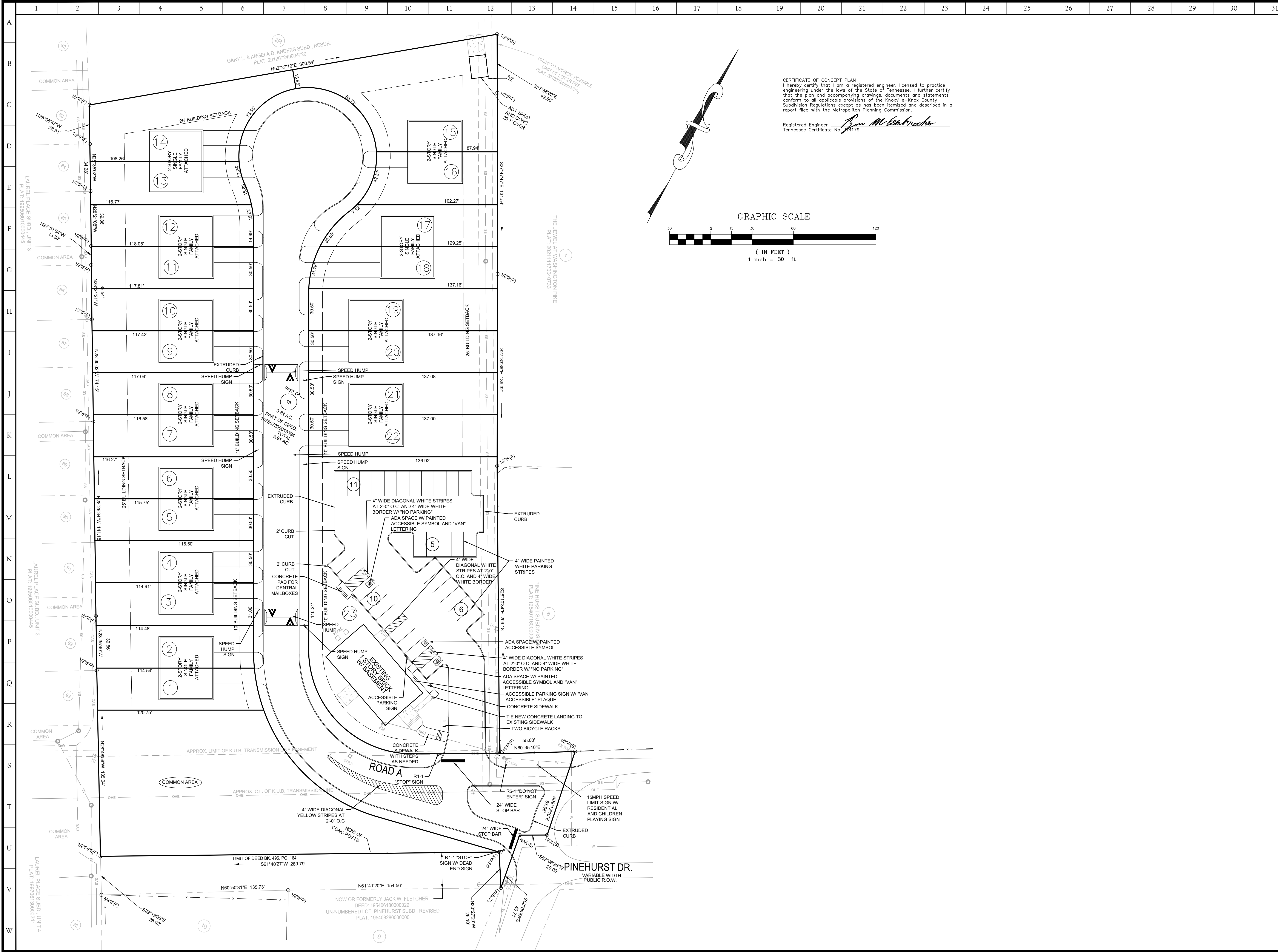
NO.	DATE	COMMENTS
1	04/20/2026	Planning Comments

ORIGINAL ISSUE: 03/27/26

SITE PROJECT #: 2106

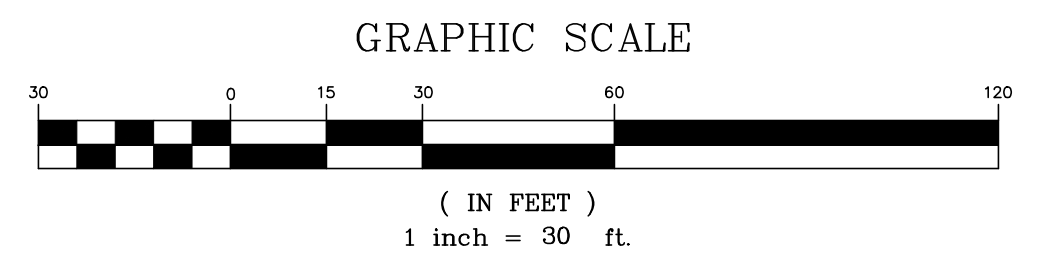
FILE: Concept Plan

CP1



CERTIFICATE OF CONCEPT PLAN  
 I hereby certify that I am a registered engineer, licensed to practice engineering under the laws of the State of Tennessee. I further certify that the plan and accompanying drawings, documents and statements conform to all applicable provisions of the Knoxville-Knox County Subdivision Regulations except as has been itemized and described in a report filed with the Metropolitan Planning Commission.

Registered Engineer  
 Tennessee Certificate No. 24179  
*Ben M. Knaack*



EST. 1997  
 10215 Technology Drive, Suite 304  
 Knoxville, TN 37932  
 (865) 777-4160  
 www.site-incorporated.com

Concept Plan of  
**Residential Development**  
 4325 Pinehurst Drive  
 Knoxville, Tennessee 37917  
 City Ward: 33, Block: 33870, Parcel: 059NC00101

REVISIONS	
NO.	DATE COMMENTS
1	04/20/2026 Planning Comments

ORIGINAL ISSUE: 03/27/26  
 SITE PROJECT #: 2106  
 FILE: Concept Plan

**CP2**

