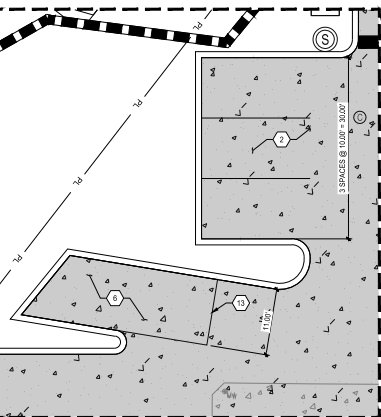


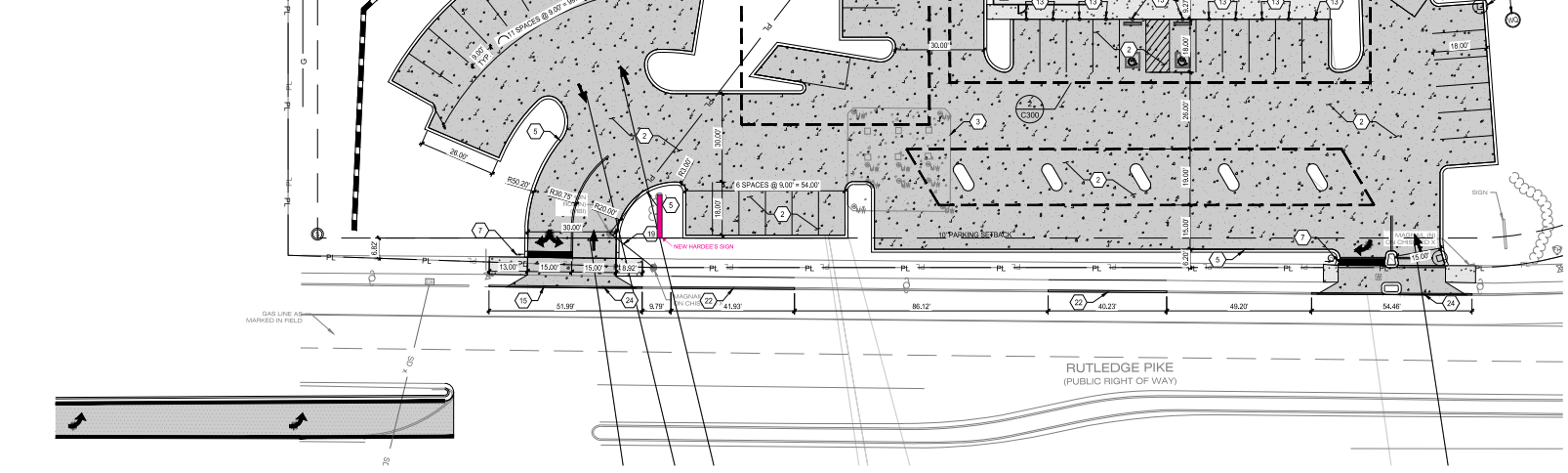
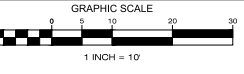
MAIN ENTRANCE PARKING SITE PLAN

6-A-24-OB
Site Layout

CONTRACTOR IS RESPONSIBLE FOR REPAIRING R.O.W. ELEMENTS DAMAGED DURING CONSTRUCTION PER CITY OF KNOXVILLE STANDARDS.



SOUTH SIDE PARKING SITE PLAN



SITE LAYOUT PLAN

GENERAL SHEET NOTES:

- SEE SHEET C001 FOR CIVIL NOTES AND LEGENDS.
- FOR TYPICAL PARKING SPACE LAYOUT, SEE 1/C802
- ALL FINISH NOT LABELED ARE TO BE FINISH

AREAS & CALCULATIONS

EXISTING		PROPOSED		TOTAL INCREASE	
SF	Acres	SF	Acres	SF	Acres
29,185	0.67	39,270	0.90	10,085	0.23

DISTURBED AREA		TOTAL INCREASE	
SF	Acres	SF	Acres
75,794	1.74	68,094	1.56

PARKING CALCULATION		TOTAL	
REQUIRED	PROVIDED	REQUIRED	PROVIDED
19	35	19	35
20	37	20	37
TOTAL	TOTAL	TOTAL	TOTAL

VEHICULAR USE AREA		TOTAL	
REQUIRED	PROVIDED	REQUIRED	PROVIDED
19	35	19	35
20	37	20	37
TOTAL	TOTAL	TOTAL	TOTAL

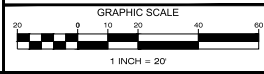
SITE LEGEND

- ONE WAY: PAINTED ONE WAY LETTERS, COLOR TO BE WHITE; SEE DETAIL 7/C801
- DIRECTIONAL ARROWS: PAINTED DIRECTIONAL ARROWS, COLOR TO BE WHITE; SEE DETAIL 7/C801
- STOP BAR: PAINTED STOP BAR, COLOR TO BE WHITE; SEE DETAIL 7/C801
- DO NOT ENTER: PAINTED DO NOT ENTER LETTERS, COLOR TO BE WHITE; SEE DETAIL 7/C801
- GUARDRAIL: GUARDRAIL; SEE DETAIL 8/C802
- DOUBLE STRIP: PAINTED DOUBLE STRIP, COLOR TO BE YELLOW

SITE KEYED NOTES

- CONCRETE SIDEWALK; SEE DETAIL 1/C801
- CONCRETE PAVING; SEE DETAIL 2/C801
- EXISTING GAS TANKS TO REMAIN
- DRIVE-THRU CLEARANCE BAR; SEE ARCHITECTURAL SHEETS FOR DETAILS
- CONCRETE MOUNTABLE CURB; SEE DETAIL 3/C801
- WASTE ENCLOSURE; SEE DETAIL 5/800
- 30" STOP SIGN PER TDD SPECIFICATIONS
- STORM DRAINAGE STRUCTURE; SEE SHEET C000 FOR DETAILS
- SANITARY SEWER STRUCTURE; SEE SHEET C000 FOR DETAILS
- ADA COMPLIANT PARKING SPACE; SEE DETAIL 2/C802
- PAINTED NO PARKING AREA, COLOR TO BE WHITE; SEE DETAIL 3/C802
- DRIVE-THRU PRE VIEW SIGN; SEE ARCHITECTURAL SHEETS FOR DETAILS
- 6" Ø CONCRETE BOLLARD; SEE DETAIL 5/C801
- DERO 'BKE HITCH' - 4 BIKE CAPACITY MIN. COLOR TBD BY OWNER; SEE DETAIL 8/C801
- INSTALL TDD STANDARD ROADWAY ENTRANCE; SEE TDD DETAIL RP-0-18; SEE DETAIL 1/C805
- RETAINING WALL TO BE DESIGNED BY OTHERS
- DRIVE-THRU HODK; SEE ARCHITECTURAL SHEETS FOR DETAILS
- DRIVE-THRU MENU BOARD; SEE ARCHITECTURAL SHEETS FOR DETAILS
- EXISTING PROPERTY LINE TO BE REMOVED
- PROPOSED FUTURE PROPERTY LINE
- EXISTING DRIVEWAY APRONS, ENSURE SIDEWALKS ARE ADA COMPLIANT
- TDD STANDARD CONCRETE CURB; SEE TDD DETAIL RP-VC-10; SEE DETAIL 2/C805
- ADA PARKING SIGN MOUNTED IN BOLLARD; SEE DETAIL 9/C802
- ROW PAVEMENT TO MEET SPECIFICATIONS; SEE DETAIL 2/C801

811 Know what's below. Call before you dig.
In Tennessee call 811 or 1-800-351-1111



MBI

ENGINEER: MBE CONTRACTORS INC.
299 AL WASSERMAN ROAD
ANDOVER, TN 37015
PHONE: (865) 964-9999
FAX: (865) 964-5213
WEB: mbecontractors.com

CONSULTANT

DATE: 06/23/2023

PROJECT INFORMATION:
PROJECT: KENJO STORE FOR KENJO MARKETS - RUTLEDGE PIKE
PROJECT ADDRESS: 4810 RUTLEDGE PIKE, ANDOVER, TN 37015
PROJECT NO.: 20230558

ACTIVE DESIGN PHASE:

<input type="checkbox"/>	FOR REVIEW ONLY
<input type="checkbox"/>	FOR PERMITTING ONLY
<input type="checkbox"/>	SCHEMATIC DESIGN
<input type="checkbox"/>	DESIGN DEVELOPMENT
<input type="checkbox"/>	CONSTRUCTION BIDDING
<input type="checkbox"/>	CONSTRUCTION DOCUMENTS
<input type="checkbox"/>	AS-BUILT RECORD SET

REVISION INFORMATION:

NO.	DATE	DESCRIPTION
01	05/10/23	CEY REVIEW COMMENTS
02	05/15/23	CEY REVIEW COMMENTS
03	06/01/23	CEY COMMENTS
04	06/23/23	CEY COMMENTS

KEY PLAN

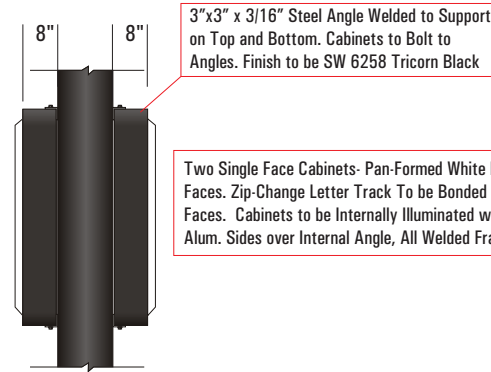
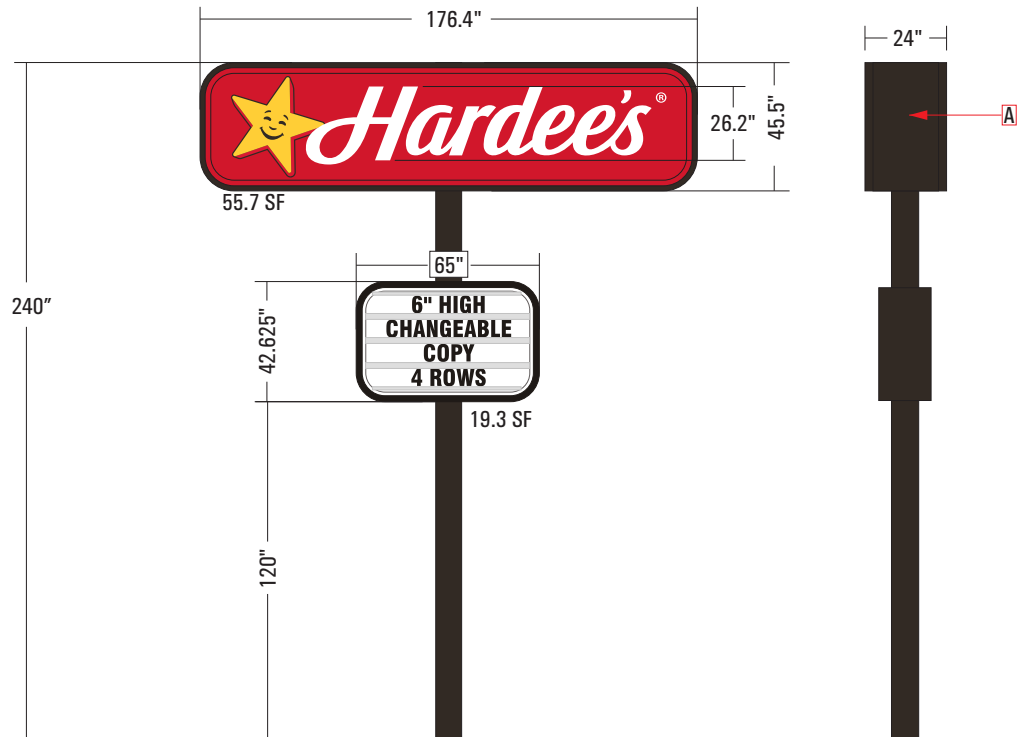
SHEET INFORMATION:
SHEET NO.: 09230558
CREATED BY: ALMA
DRAWN BY: ALMA
REVIEWED BY: G.B.T.
SHEET TITLE:

SHEET NO.: **SITE LAYOUT PLAN**
C300

Rectangular Pylon w/Readerboard

6-A-24-OB
Proposed Detached Sign

Color Schedule



Stock Code	TOTAL SQ FT
HAR-V2-RB40x61	16.9

Materials	
1	.177 Clear Panformed, Embossed Poly. Face
2	2" Alum. Retainer
3	2nd Surface Painted Decoration
4	White LED Illumination
5	Welded Aluminum Tube Frame
6	Tamper Resistant Switch - U.L. Approved 'Leviton' #1101-2L

Colors & Finishes	
A	Gloss SW 6258 Tricorn Blk Returns/Retainers
B	Clear, Pan Formed Poly. Faces Backsprayed White
C	Painted to Match 3M 3630-73
D	Painted to Match 3M 3630-125
E	2nd Surface 3M 3630-22

Rev #1 -
Rev #2 -
Rev #3 -

Notes



Designer: CM	Date: 4/27/21
Client: Hardee's -	
File Path: Z/Restaurant/Hardee's/	

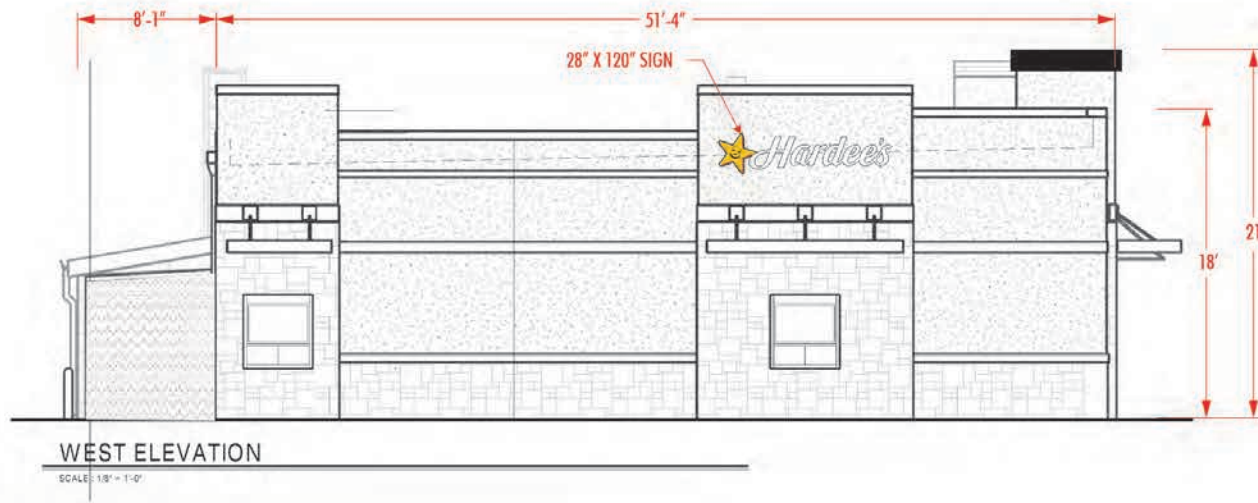
- Proof Is Approved. Proceed With Production Of Order
- Proof Is Approved With Corrections. Make Corrections As Indicated And Proceed With Production Of Order

Signature: _____
 I have reviewed this proof in regard to: Sign type, order quantity, and accuracy of icons, symbols, and text (e.g. spelling capitalization, punctuation).
 Print Name: _____
 Date: _____



These plans are the exclusive property of Design Team Sign Company and are the result of the original work of its employees. They are submitted to your company for the sole purpose of your consideration of whether to purchase these plans or to purchase from Design Team Sign Company a product manufactured according to these plans. Distribution or exhibition of the plans to anyone other than employees of your company, or use of these plans to construct a product similar to one embodied herein, is expressly forbidden. In the event that exhibition or construction occurs, Design Team Sign Company expects to be reimbursed \$500 in compensation for time and effort entailed in creating these plans.

6-A-24-OB
Proposed Wall Signs (Does not require Planning Commission approval)



► PENDING ONSITE SURVEY FOR EXACT FIELD MEASUREMENTS, CREW ACCESS, MOUNTING DETAILS & ENGINEERS RECOMMENDATIONS ◄

OK TO PROCEED AS IS MAKE CHANGES & PROCEED MAKE CHANGES & RESUBMIT



APPROVED BY _____ DATE _____

THIS DESIGN DRAWING IS THE SOLE PROPERTY OF SOUTHERN SIGNS INC & CAN NOT BE REPRODUCED, COPIED OR DISTRIBUTED TO OTHERS WITHOUT WRITTEN PERMISSION FROM AN AUTHORIZED REPRESENTATIVE OF SOUTHERN SIGNS INC. PRICE OF THIS DRAWING IS \$500.00

SALES PERSON

ORIGINAL
DATE 12-6-23 BY JKB

REVISIONS
1) DATE BY
2) DATE BY
3) DATE BY

COLORS
AS PER INDIVIDUAL SIGN DETAIL DRAWINGS

ELECTRICAL REQUIREMENTS
ONE(1) = 120VT / 20AMP SERVICE EACH SIGN
PRIMARY ELECTRICAL TO SIGN & DISCONNECT "NOT INCLUDED"

Southern Signs Inc.
9916 THORN GROVE PIKE - STRAWBERRY PLAIN, TN.
865-933-4877 or 865-933-4878
fax 865-933-4876
www.SouthernSignsInc.com

KenJo

#34 Rutledge Pike
Knoxville, TN

THIS SIGN MEETS SETBACK & SQUARE FOOTAGE REQUIREMENTS BUT IS TOO TALL

6-A-24-OB
Existing Signs (#1 and 3 non conforming)

THESE SIGNS MEET SQUARE FOOTAGE & HEIGHT REQUIREMENTS BUT DO NOT MEET SETBACK

