

NARRATIVE FOR USE UPON REVIEW BY PSYCHIATRIC SERVICES OF EAST
TENNESSEE FOR 201 PROSPERITY PARCEL 119KA008

ZONE USE C-H-2 OCCUPANCY CLASS B

Psychiatric Services asks for approval of use upon review for the operation of an outpatient behavioral health counseling center at the subject property.

Hours of operation will be 9A-5P M-F, 9A-Noon Saturday. Closed Sunday. No overnight stays

Adults 18 and above will be served. We will provide individual therapy, family counseling as well as coping skills classes such as anger management and others such as parenting classes. A strong focus will be on expectant mothers with behavioral health issues and patients with a trauma history. Many are TennCare patients and have very limited access to many of the services we provide.

No medication will be dispensed at the site. None will be stored on site.

This drawing is the property of Keith C. Jamerson, Architect and is not to be copied or reproduced in whole or part. It is to be used only for the project and is not to be used on any other project. It is to be returned upon request.

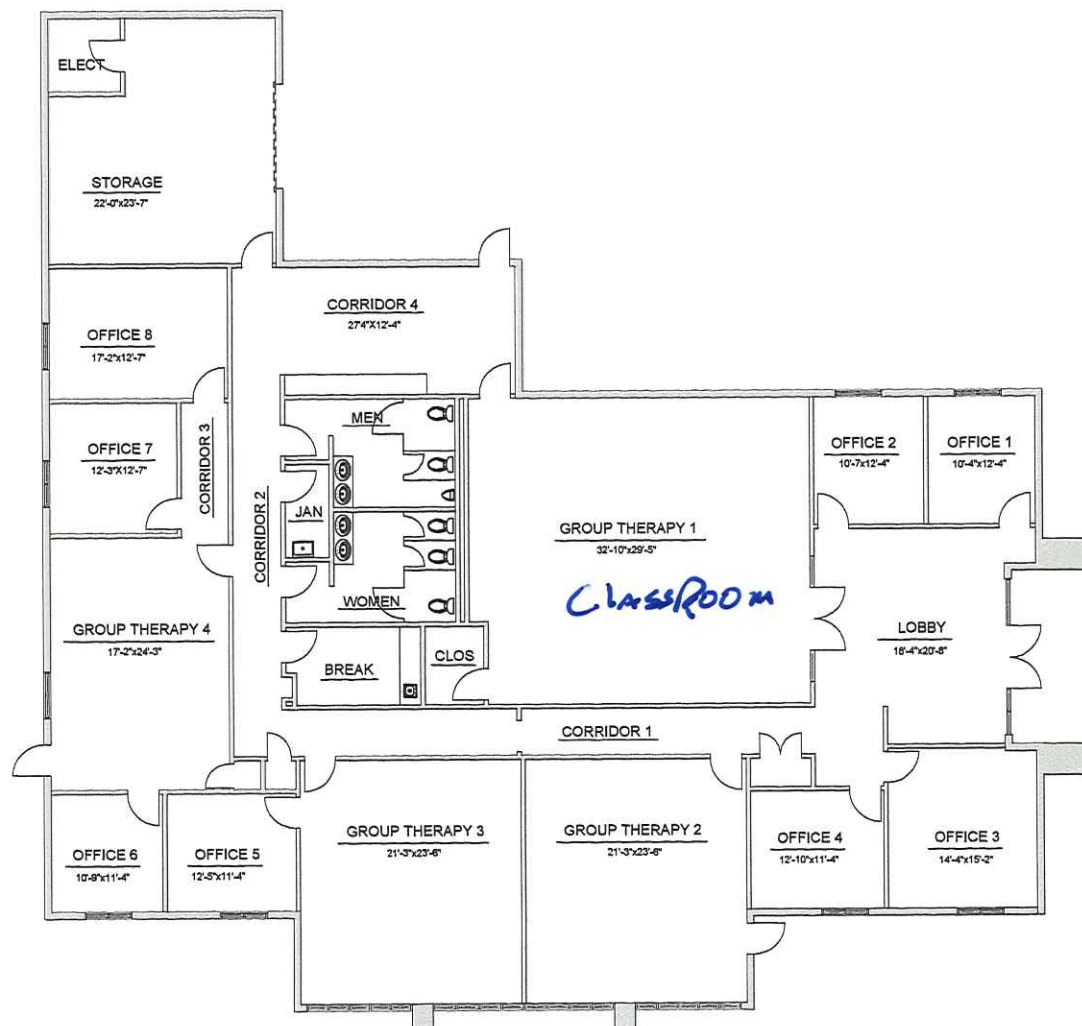
KEITH C. JAMERSON
ARCHITECT
237 MCFEE ROAD
KNOXVILLE, TENNESSEE 37912
615-585-1111
kjamerson@charter.net

EXISTING CONDITIONS
201 PROSPERITY DRIVE
KNOXVILLE, TN.
PSYCHIATRIC SERVICES
OF
EAST TENNESSEE

**EXISTING
FLOOR PLAN**

DRAWN
3.27.21
kj
REVISIONS

SHEET
1 OF 2



EXISTING FLOOR PLAN

SCALE 1/8" = 1'-0"

CODE AND ZONING SUMMARY

PARCEL.....119KA008
ZONING.....C-H-2
OCCUPANCY CLASSIFICATION.....B (BUSINESS)
CONSTRUCTION TYPE.....II B - NO SPRINKLER
GROSS SQUARE FOOTAGE.....6,364
OCCUPANT LOAD.....SEE SHEET 2
NUMBER OF STORIES.....1



6-C-21-SU
4/26/2021