

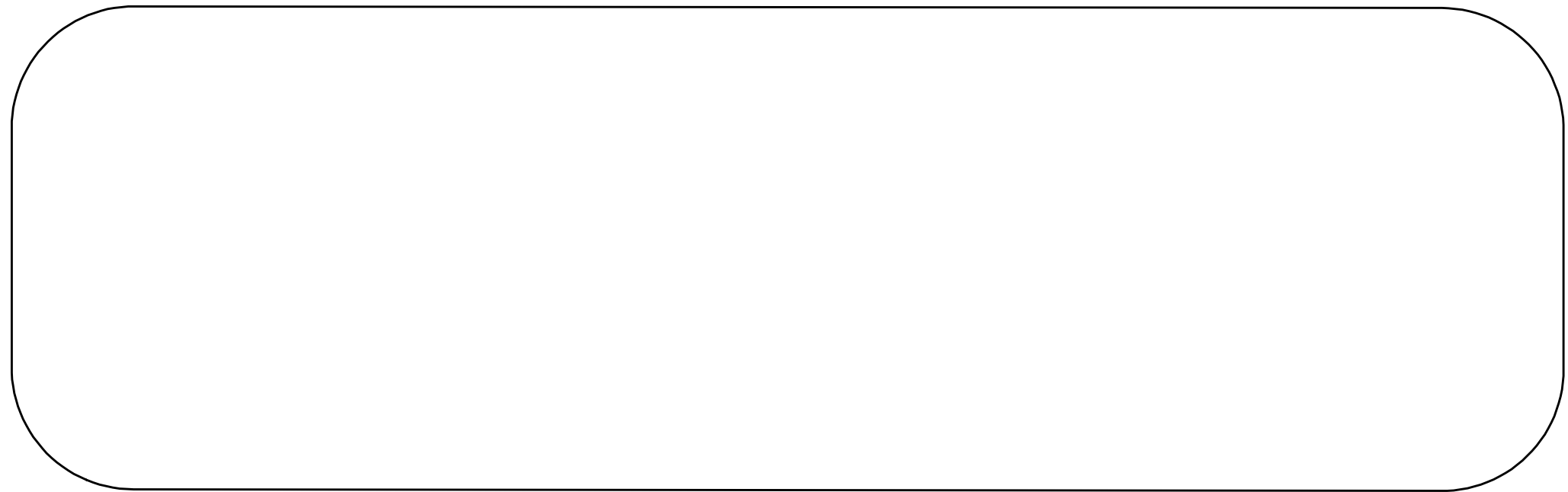
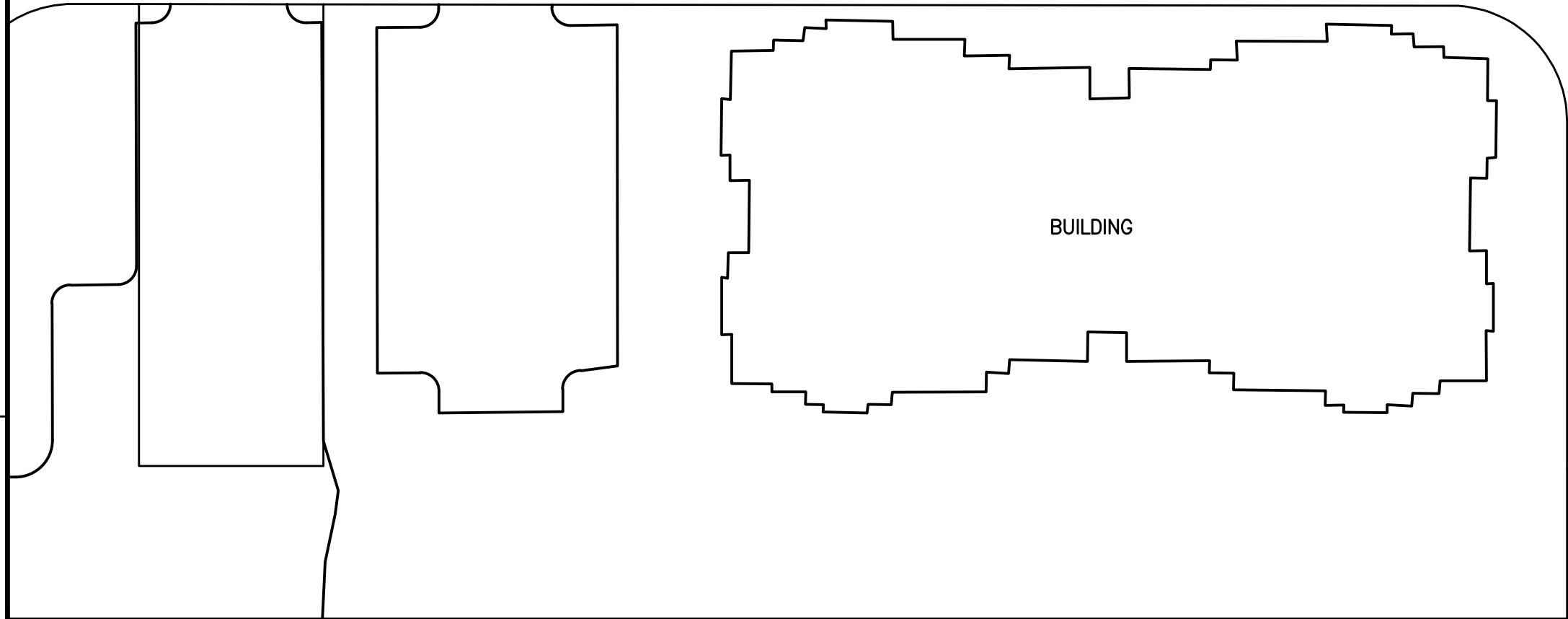
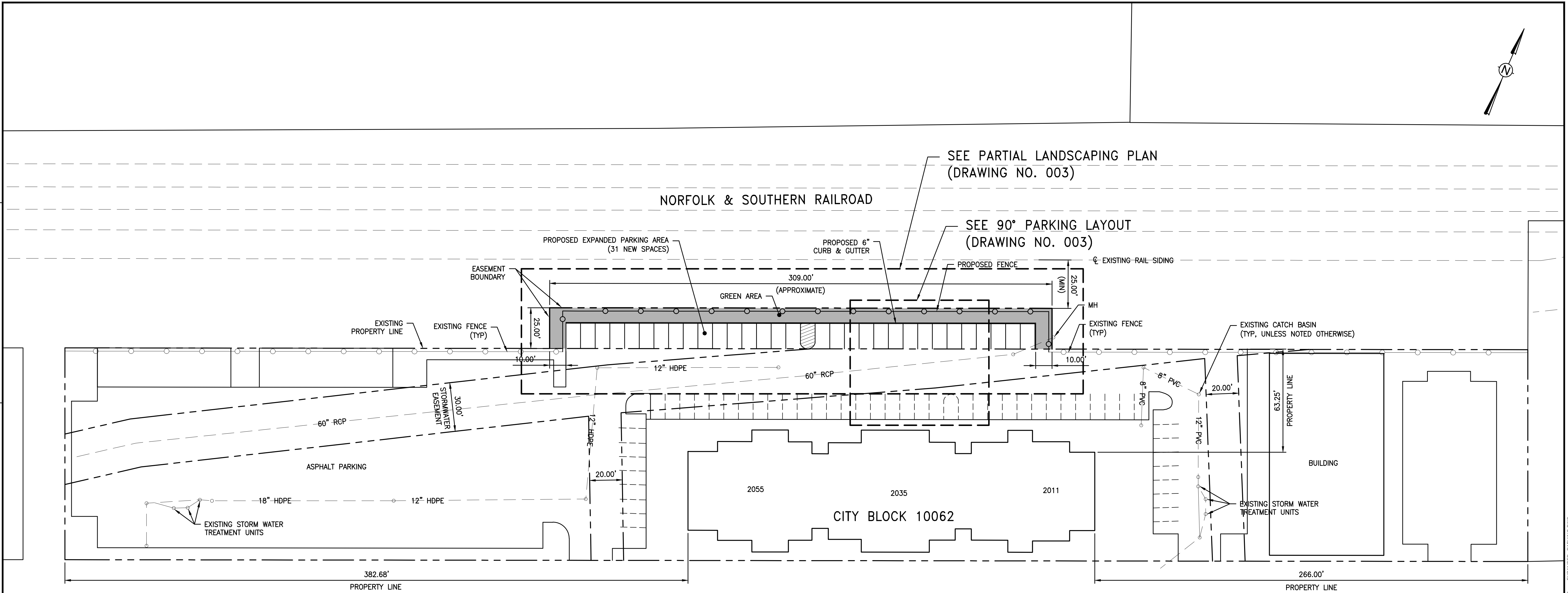
E

D

C

B

A



Revised 5/25/2016

6-E-16-UR

NOTES:
FOR NOTES SEE DRAWING NO. 003.

30

0

30

60 FT

REV	ID	DDMMYY	REVISION / ISSUE DESCRIPTION	DRN	CHK	APP	APP	APP	APP	APP	REV	ID	DDMMYY	REVISION / ISSUE DESCRIPTION	DRN	CHK	APP	APP	APP	APP	REF	NUMBER	TITLE
B		25MAY16	INCORPORATE AGENCY COMMENTS								WRW	--	DRS	--	--	--	--	--	--	--			
A		18MAR16	ISSUE FOR AGENCY REVIEW								WRW	DRS	DRS	--	--	--	--	--	--	--			

UNLESS OTHERWISE AGREED IN A WRITTEN CONTRACT BETWEEN AMEC FOSTER WHEELER AND ITS CLIENT: (i) THIS DOCUMENT CONTAINS INFORMATION, DATA AND DESIGN THAT IS CONFIDENTIAL AND MAY NOT BE COPIED OR DISCLOSED; AND (ii) THIS DOCUMENT MAY ONLY BE USED BY THE CLIENT IN THE CONTEXT AND FOR THE EXPRESS PURPOSE FOR WHICH IT HAS BEEN DELIVERED. ANY OTHER USE OR RELIANCE ON THIS DOCUMENT BY ANY THIRD PARTY IS AT THAT PARTY'S SOLE RISK AND RESPONSIBILITY.

STAMP/SEAL

PRELIMINARY – NOT FOR CONSTRUCTION				
D. SMITH PROJECT MGR				
PROJECT PHASE				
PROJECT NO. 3043160007		BY	DDMMYY	
	DES	DRS	25MAY16	
SCALE	DRN	WRW	25MAY16	
	CHK	--	--	
AS SHOWN				
	APP	DRS	25MAY16	

CROWNE AT CAMPUS POINTE

EXPANDED PARKING AREA
SITE PLAN

amec foster wheeler

AREA
N/A

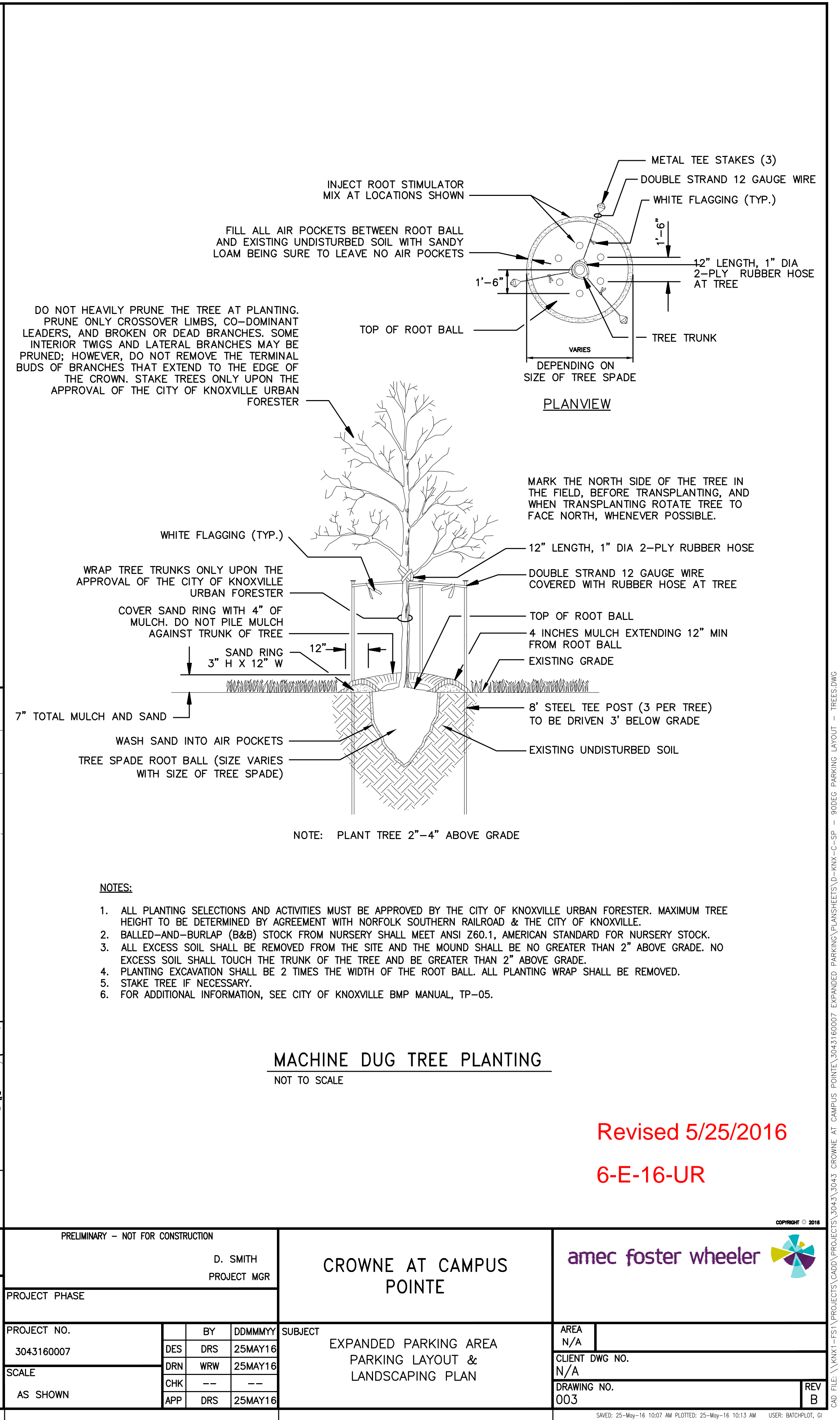
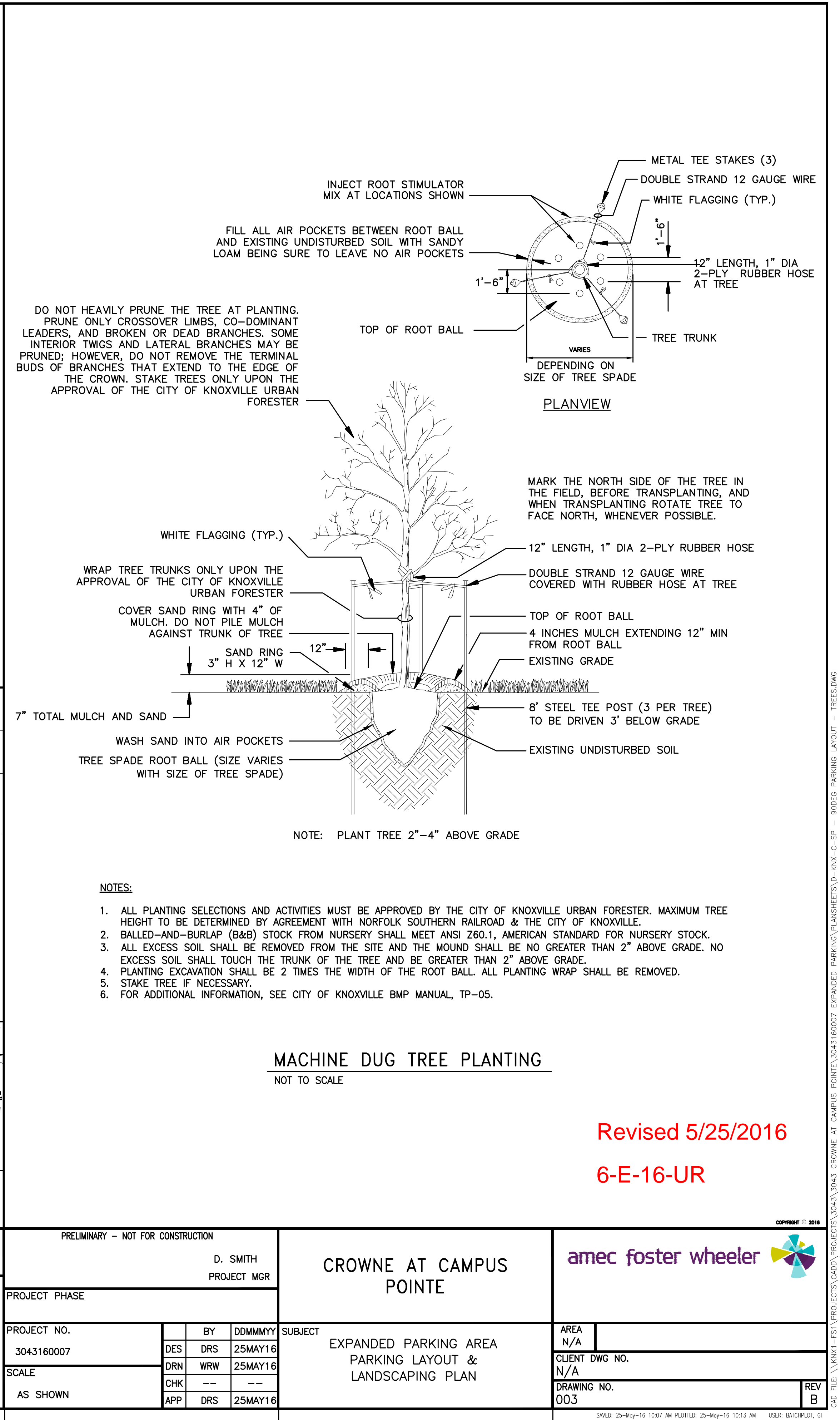
CLIENT DWG NO.
N/A

DRAWING NO.
002

REV
B

NS D-2234

CAD FILE: \\KRM1-FS1\PROJECTS\CADD\PROJECTS\3043\3043_CROWNE AT CAMPUS POINTE\PLANS\6007_EXPANDED PARKING\PLANSHEETS\0-KN-C-SP - EXPANDED PARKING.DWG



PLANVIEW

DO NOT HEAVILY PRUNE THE TREE AT PLANTING. PRUNE ONLY CROSSOVER LIMBS, CO-DOMINANT LEADERS, AND BROKEN OR DEAD BRANCHES. SOME INTERIOR TWIGS AND LATERAL BRANCHES MAY BE PRUNED; HOWEVER, DO NOT REMOVE THE TERMINAL BUDS OF BRANCHES THAT EXTEND TO THE EDGE OF THE CROWN. STAKE TREES ONLY UPON THE APPROVAL OF THE CITY OF KNOXVILLE URBAN FORESTER

INJECT ROOT STIMULATOR MIX AT LOCATIONS SHOWN

FILL ALL AIR POCKETS BETWEEN ROOT BALL AND EXISTING UNDISTURBED SOIL WITH SANDY LOAM BEING SURE TO LEAVE NO AIR POCKETS

METAL TEE STAKES (3)

DOUBLE STRAND 12 GAUGE WIRE

WHITE FLAGGING (TYP.)

12" LENGTH, 1" DIA 2-PLY RUBBER HOSE AT TREE

1'-6"

TOP OF ROOT BALL

VARIABLES

DEPENDING ON SIZE OF TREE SPADE

ELEVATION VIEW

MARK THE NORTH SIDE OF THE TREE IN THE FIELD, BEFORE TRANSPLANTING, AND WHEN TRANSPLANTING ROTATE TREE TO FACE NORTH, WHENEVER POSSIBLE.

WHITE FLAGGING (TYP.)

WRAP TREE TRUNKS ONLY UPON THE APPROVAL OF THE CITY OF KNOXVILLE URBAN FORESTER

COVER SAND RING WITH 4" OF MULCH. DO NOT PILE MULCH AGAINST TRUNK OF TREE

SAND RING 3" H X 12" W

12"

TOP OF ROOT BALL

4 INCHES MULCH EXTENDING 12" MIN FROM ROOT BALL

EXISTING GRADE

8' STEEL TEE POST (3 PER TREE) TO BE DRIVEN 3' BELOW GRADE

EXISTING UNDISTURBED SOIL

WASH SAND INTO AIR POCKETS

TREE SPADE ROOT BALL (SIZE VARIES WITH SIZE OF TREE SPADE)

7" TOTAL MULCH AND SAND

NOTE: PLANT TREE 2"-4" ABOVE GRADE

NOTES:

1. ALL PLANTING SELECTIONS AND ACTIVITIES MUST BE APPROVED BY THE CITY OF KNOXVILLE URBAN FORESTER. MAXIMUM TREE HEIGHT TO BE DETERMINED BY AGREEMENT WITH NORFOLK SOUTHERN RAILROAD & THE CITY OF KNOXVILLE.
2. BALLED-AND-BURLAP (B&B) STOCK FROM NURSERY SHALL MEET ANSI Z60.1, AMERICAN STANDARD FOR NURSERY STOCK.
3. ALL EXCESS SOIL SHALL BE REMOVED FROM THE SITE AND THE MOUND SHALL BE NO GREATER THAN 2" ABOVE GRADE. NO EXCESS SOIL SHALL TOUCH THE TRUNK OF THE TREE AND BE GREATER THAN 2" ABOVE GRADE.
4. PLANTING EXCAVATION SHALL BE 2 TIMES THE WIDTH OF THE ROOT BALL. ALL PLANTING WRAP SHALL BE REMOVED.
5. STAKE TREE IF NECESSARY.
6. FOR ADDITIONAL INFORMATION, SEE CITY OF KNOXVILLE BMP MANUAL, TP-05.

MACHINE DUG TREE PLANTING

NOT TO SCALE