

GRADING LEGEND

- PROPOSED PROPERTY LINE
- - - - - EXISTING CONTOURS (1' CONTOURS)
- ⊕ ⊙ ⊗ EXISTING STORM STRUCTURES
- EXISTING STORM PIPE
- - - - - PROPOSED CONTOUR (1' CONTOURS)
- PROPOSED STORM PIPE
- ⊕ ⊙ PROPOSED PRECAST CONCRETE STORM STRUCTURES (SEE DETAILS)
- ▨ PROPOSED ADA COMPLIANT CONCRETE SIDEWALK (SEE DETAIL)
- ▨ PROPOSED ON-SITE ASPHALT PAVEMENT (SEE DETAIL)
- ▨ PROPOSED CONCRETE PAVEMENT (SEE DETAIL)
- 860.10 PROPOSED SPOT ELEVATIONS (FINISHED GRADE)
- Ⓢ CURB RAMP (SEE DETAIL)

NOTE: MAX 2% SLOPE IN ALL DIRECTIONS AT ADA PARKING SPACES AND ACCESS AISLES.

**Kimley-Horn
and Associates, Inc.**

Suite 501
209 TENTH AVENUE SOUTH
NASHVILLE, TN 37203
Tel: (615) 564-2701
Fax: (615) 564-2702

© 2013 Kimley-Horn and Associates, Inc.

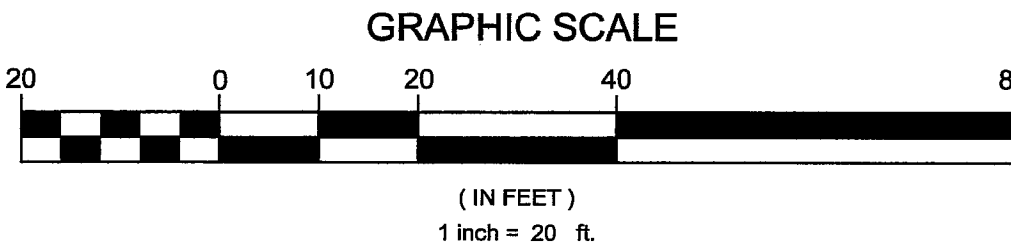
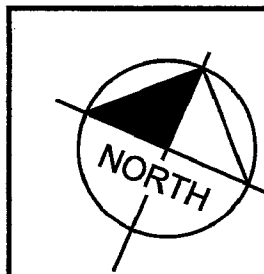
**UNIVERSITY
WALK PARKING**
CITY OF KNOXVILLE
TENNESSEE

GRADING

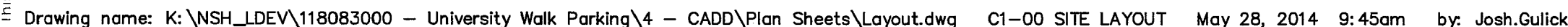
DRAFT
PRELIMINARY
PLANS

NOT FOR
CONSTRUCTION

6-3-14 - DR
REVISED
5-29-14

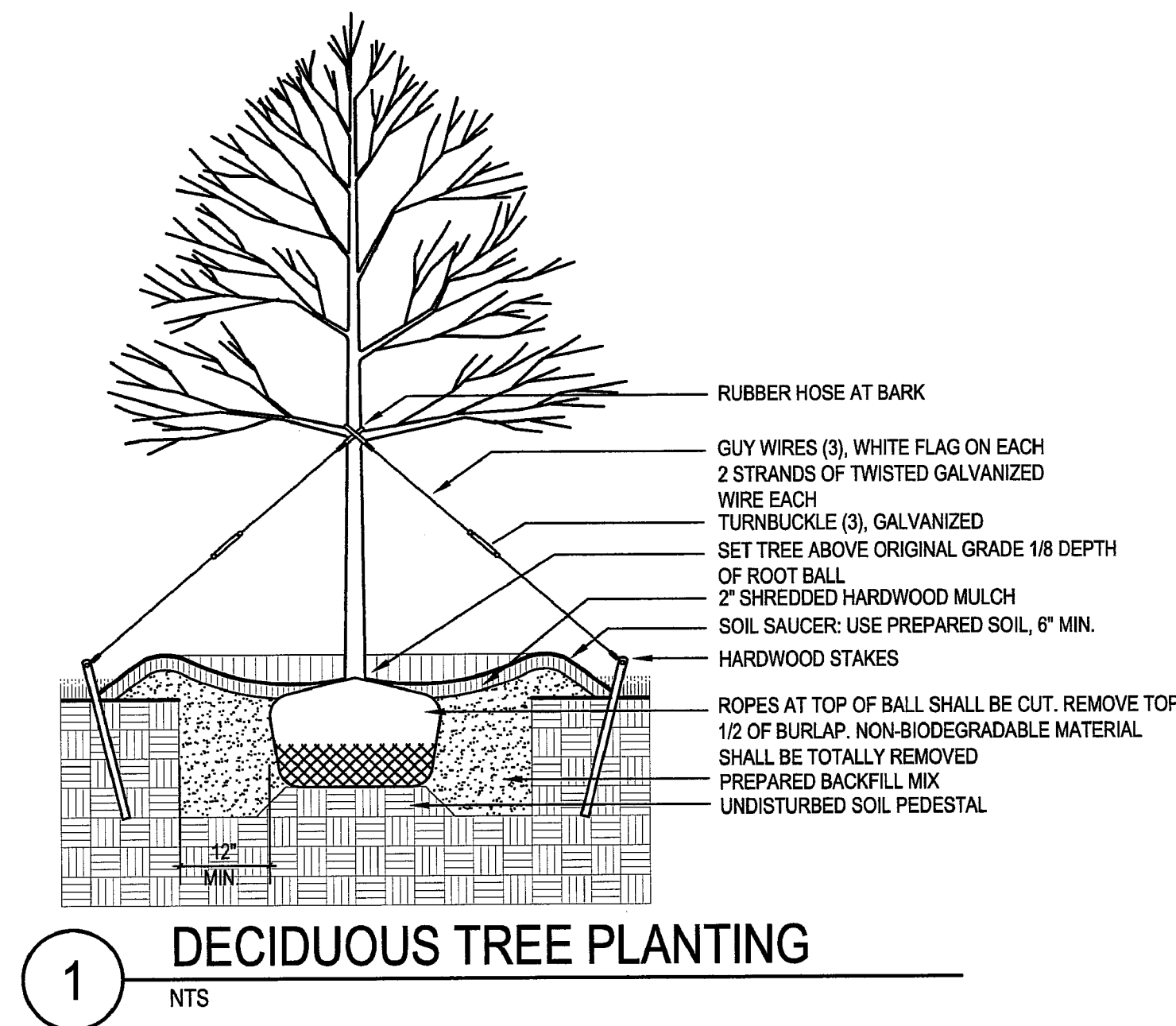


DATE	
REVISIONS	
NO.	
DATE	
BY	
SCALE (H):	1" = 20'
SCALE (V):	N/A
DESIGNED BY:	BJB
DRAWN BY:	JAG
CHECKED BY:	BJB
DATE:	05/28/14
KHA PROJECT NO.:	118083000
SHEET NUMBER	C2-00



GRAPHIC SCALE

(IN FEET)
1 inch = 20 ft.




DECIDUOUS TREE PLANTING

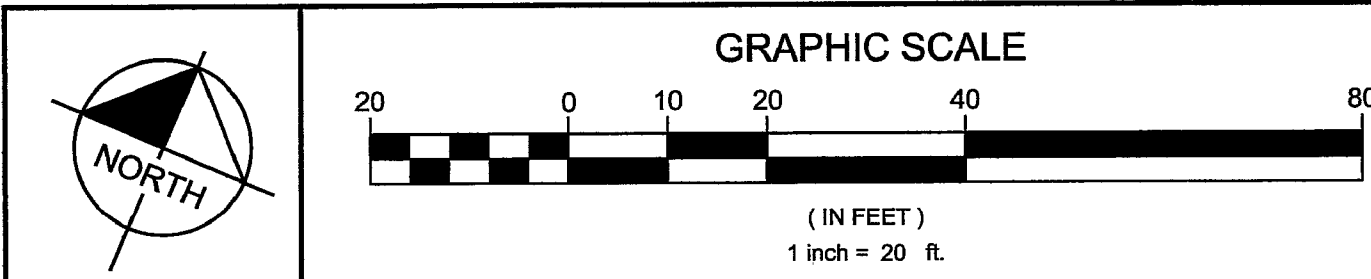
MULCH STRIP—Shredded hardwood mulch
Mulch minimum 3' around trees.

HYDRO-MULCH

ITE #1
 total Impervious Area: 23,095 or .52 Acres
 replacement trees required = 8 Trees per acre
 Trees required to meet replacement requirement. Trees to be 2" cal. Min. and attain 50 in height.
 spots of pervious paving

ITE #2
 total Impervious Area: 6,575 or .15 Acres
 replacement trees required = 8 Trees per acre
 Trees required to meet replacement requirement. Trees to be 2" cal. Min. and attain 50 in height

6-5-14-UR
 **REVISED**
 5-29-14



LANDSCAPE

DRAFT
PRELIMINARY
PLANS
NOT FOR
CONSTRUCTION

[illegible]

SCALE (H):	1" = 20'
SCALE (V):	N/A
DESIGNED BY:	PHN
DRAWN BY:	PHN
CHECKED BY:	ZJD
DATE:	05/28/14
KHA PROJECT NO.: 118083000	
SHEET NUMBER	
L1-00	