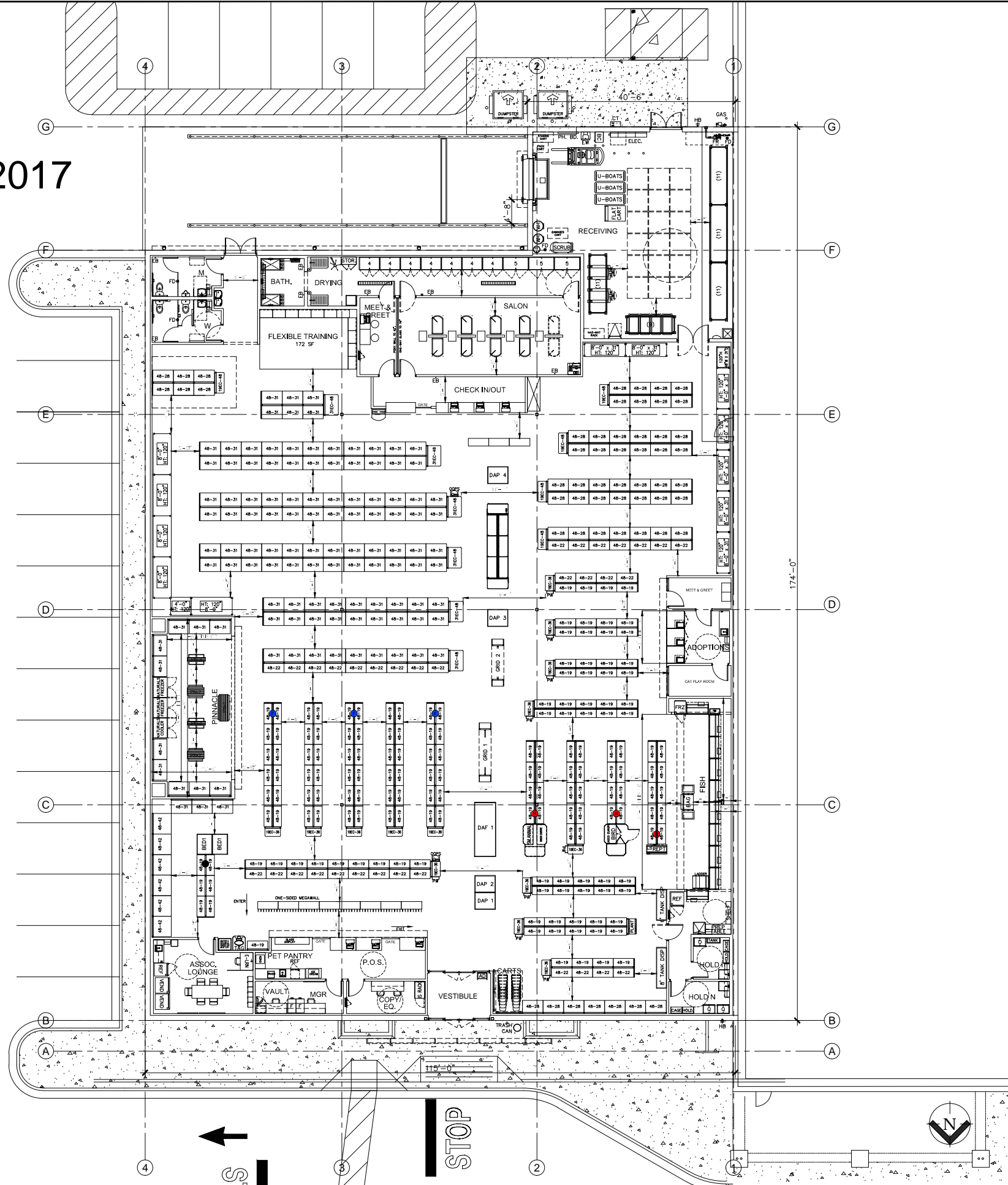




7-A-17-UR

Revised: 6/28/2017



Area Merch

Square Footage	Proto	Actual
Core	18241 SF	18222 SF
Banfield	0 SF	0 SF
Hotel	0 SF	0 SF
Salon	1472 SF	1488 SF
Training	174 SF	172 SF
Adoption	309 SF	315 SF
Receiving	1378 SF	1481 SF
Employee Services	839 SF	904 SF
Common Sales	14070	13862 SF
Total Store	18241 SF	18222 SF

Merchandise	Proto	Actual
4' Lozier Sections (Linear Feet)	1552 LF	1512 LF
4' Steel (Linear Feet)	0 LF	8 LF
8' Steel (Linear Feet)	112 LF	96 LF
Total Linear Feet	1672 LF	1616 LF

Receiving	Proto	Actual
9' Steel (Pallet Points)	6 PP	6 PP
11' Steel (Pallet Points)	36 PP	36 PP
Ground Pallets (Pallet Points)	18 PP	18 PP
Total Pallet Points	60 PP	60 PP

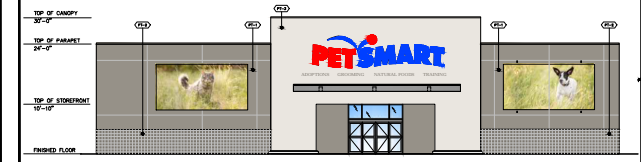
Merchandise

Dog Merchandise:	932 LF	58%
Cat / Specialty Merchandise:	684 LF	42%
Total Merchandise:	1616 LF	100%

Notes

- Deal Type: BTS-New
- Plan Designation: 2017 18K Bulletin 2
- Ceiling Clear Height: 16'-4" Per Proto
- Truck Type: WB-67 Truck
- Receiving Situation: Recessed Loading Dock
- Receiving Equipment: Standard Forklift, 2 Manual Pallet Jacks
- Receiving Door Height: 10'-0" Per Proto
- Design Constraints: Depth of store @ 150'-0"

Elevations



Approvals

Senior Development Manager	-
Development Manager	-
Floor Planning	-
Operations	-
Store Design	-

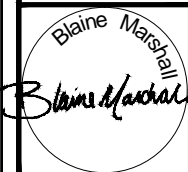
"RIGID" POWER DROP  
 "FLEX" POWER DROP  
 "FUTURE" POWER DROP

**PRE-DESIGN**  
REVIEW FIXTURE PLAN



NO.	DATE	REVISIONS
1		
2		
3		
4		
5		
6		
7		
8		
9		
10		

STORE #3146  
POWELL, TN



FIXTURE  
FLOOR PLAN

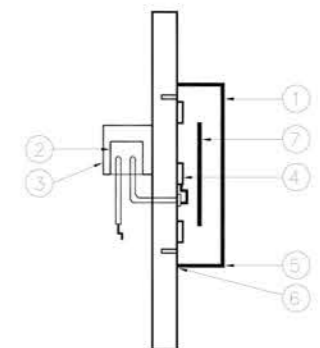
Date:  
05-15-17  
Sheet No:  
**F1**

**Notes:**

- GRAPHICS WILL CONTAIN NO LETTERING OR BRANDING OF ANY KIND

7-A-17-UR  
 Revised: 6/28/2017

No.	DATE	REVISIONS



- 3/16" RED
- POWER SUPPLY NEC 600-32(E)
- FIRE SAFE TRANSFORMER RECEPTACLE SUITABLE FOR OUTDOOR IMPLEMENTATION
- 12V LED ElectroLED or GECore
- 1" RETURNS - PAINT TO MATCH RED
- .090 ALUMINUM FAB CHANNEL LETTERS RETURNS - PAINTED TO MATCH RED
- BIRD SCREEN DETAIL

STORE #3146  
 POWELL, TN

Blaine Marshall  
*Blaine Marshall*

FIXTURE  
 FLOOR PLAN

3 EXTERIOR ELEVATION / SIGNAGE



2 SIGN DETAIL

- |       |                     |   |
|-------|---------------------|---|
| CMU-1 | SMOOTH FACE C.M.U.  | PPG PAINTS #PPG1007-5 "LAZY AFTERNOON"                |
| CMU-2 | SINGLE SCORE C.M.U. | PAINT GLIDDEN PROFESSIONAL #PPG1007-6 "COOL CHARCOAL" |
| EFS-1 | E.I.F.S.            | PAINT GLIDDEN PROFESSIONAL #PPG1002-2 "ARCTIC COTTON" |

1 COLOR / MATERIAL SCHEDULE

4 SIGNAGE

**PROTOTYPE**  
 2017

Date: 05-15-17  
 Sheet No: **F1**