



10215 Technology Drive, Suite 304
 Knoxville, TN 37932
 (865) 777-4160
www.site-incorporated.com



ORNL Northshore Town Center

New Branch ORNL Federal Credit Union
 Town Center Boulevard
 Knoxville, Tennessee 37922

Site Layout Plan - Special Use

REVISIONS

NO.	DATE	COMMENTS
07/12/2025	Per MPC Comments	
07/28/2025	Per MPC Comments	

ORIGINAL ISSUE: 06/23/2025

SITE PROJECT #: 1758

FILE: _____ Layout



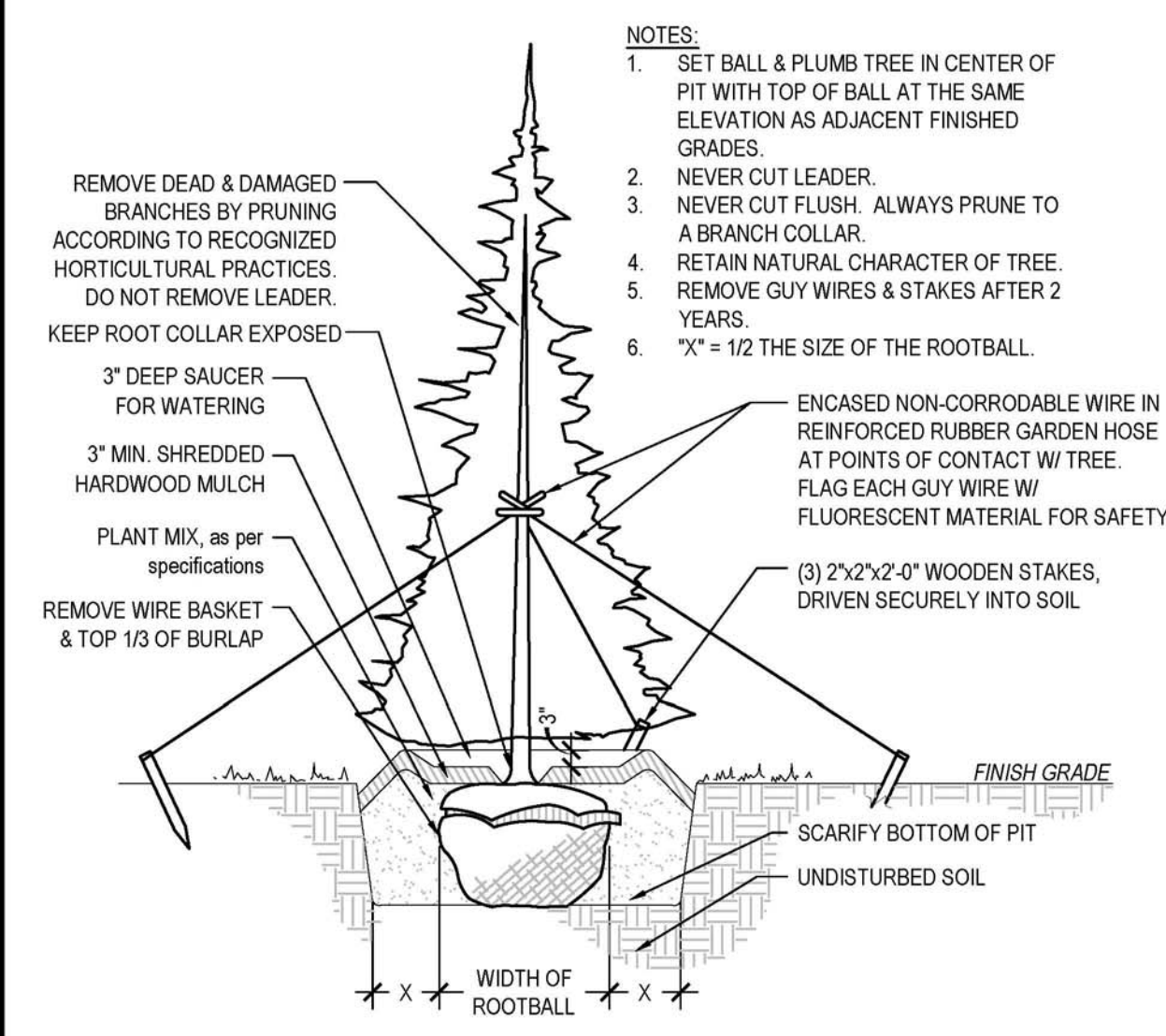
Know what's below.
 Call before you dig.

Revised: 7/28/2025
 MPC PLANNING FILE # 8-E-25-SU

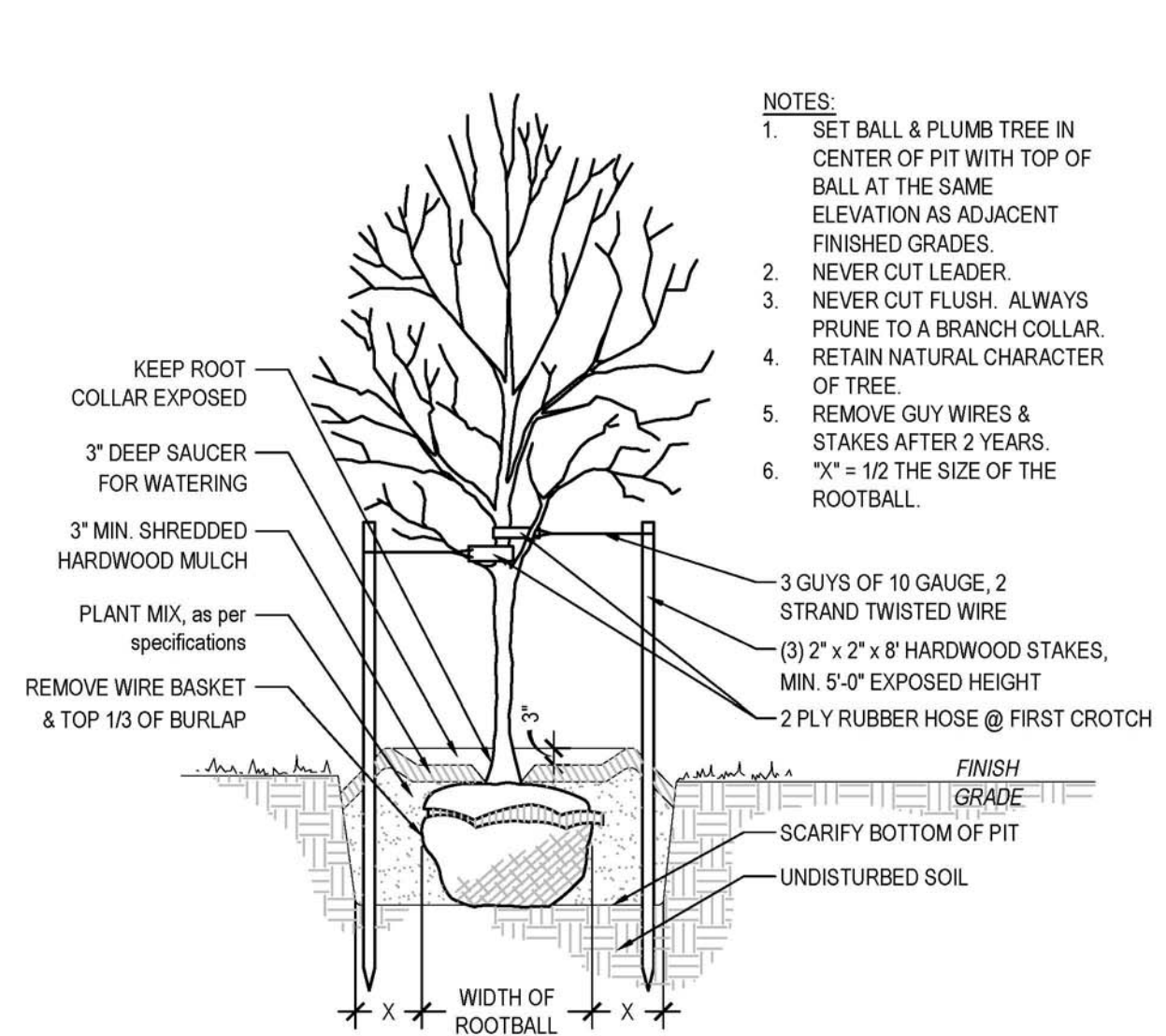
C4.0



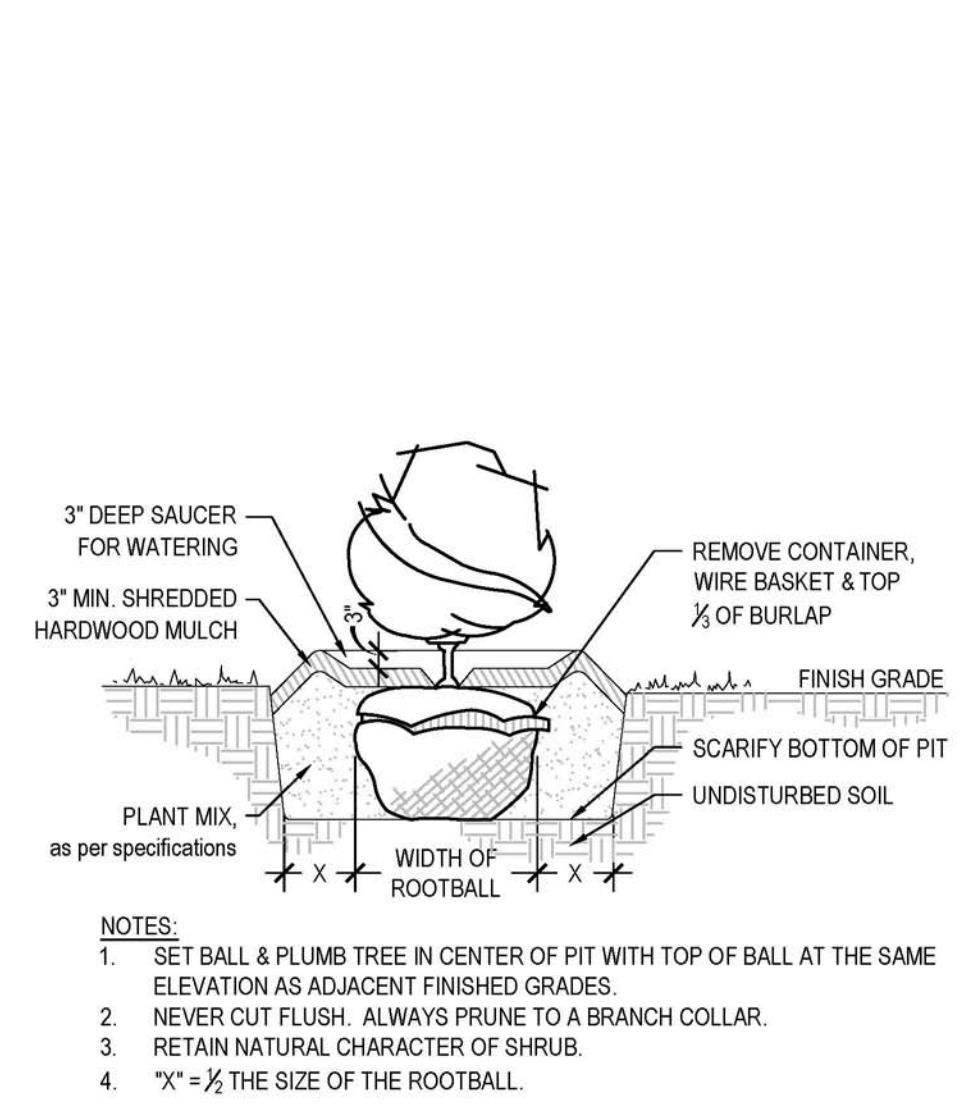
LANDSCAPE PLAN
1"=20'



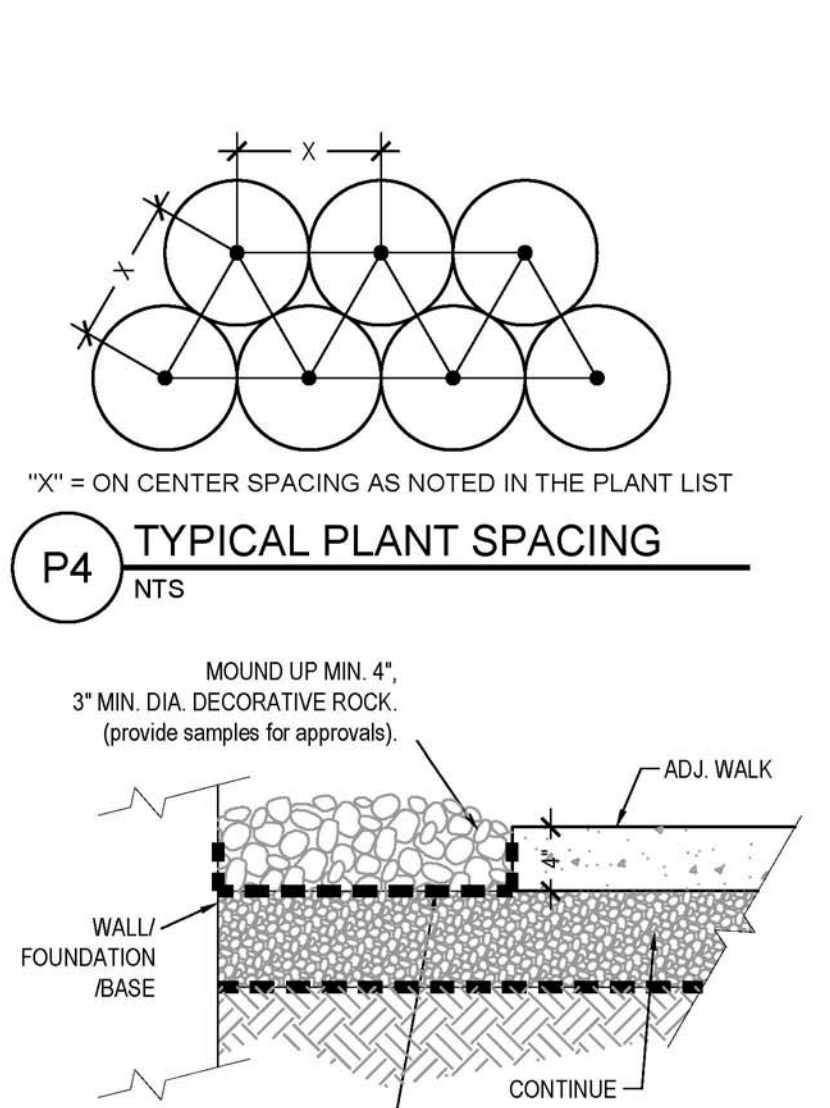
P1 TYPICAL EVERGREEN TREE PLANTING
NTS



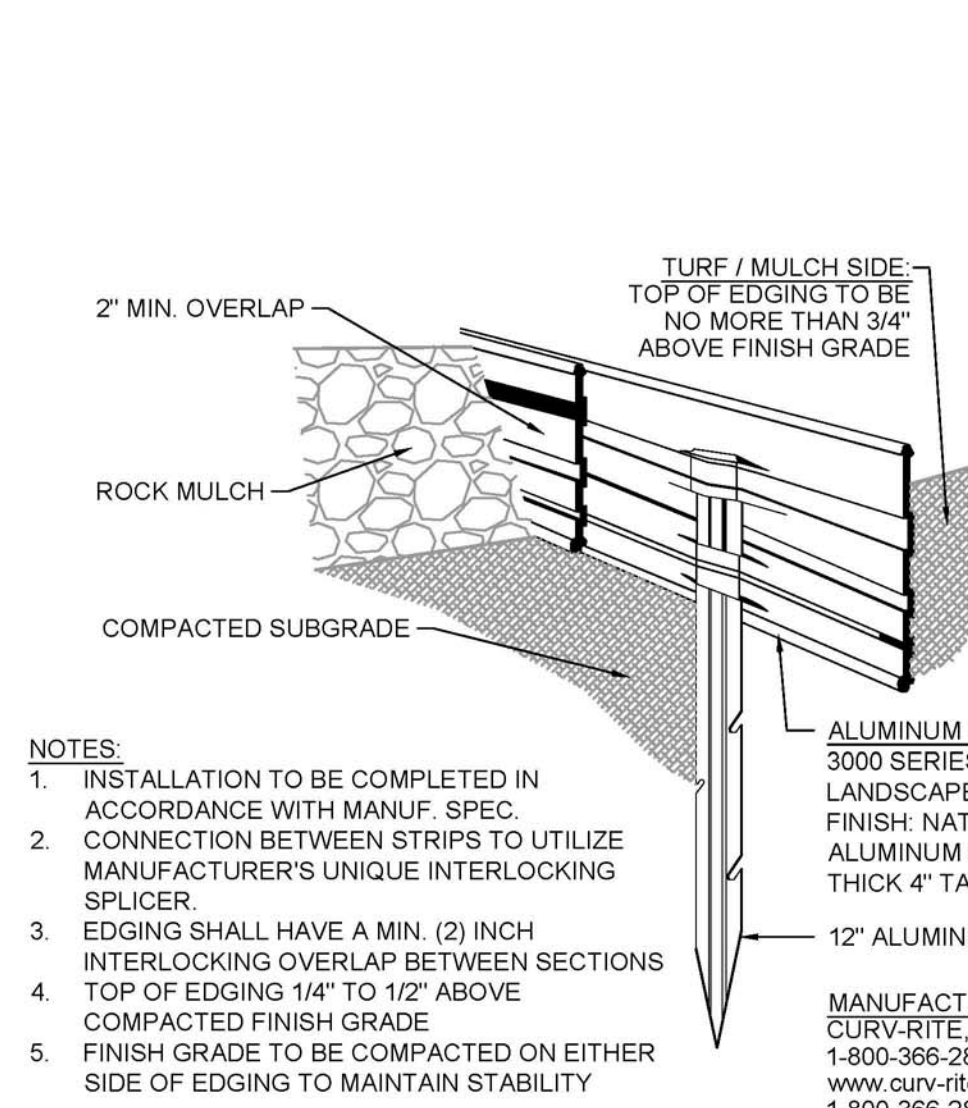
P2 TYPICAL DECIDUOUS TREE PLANTING
NTS



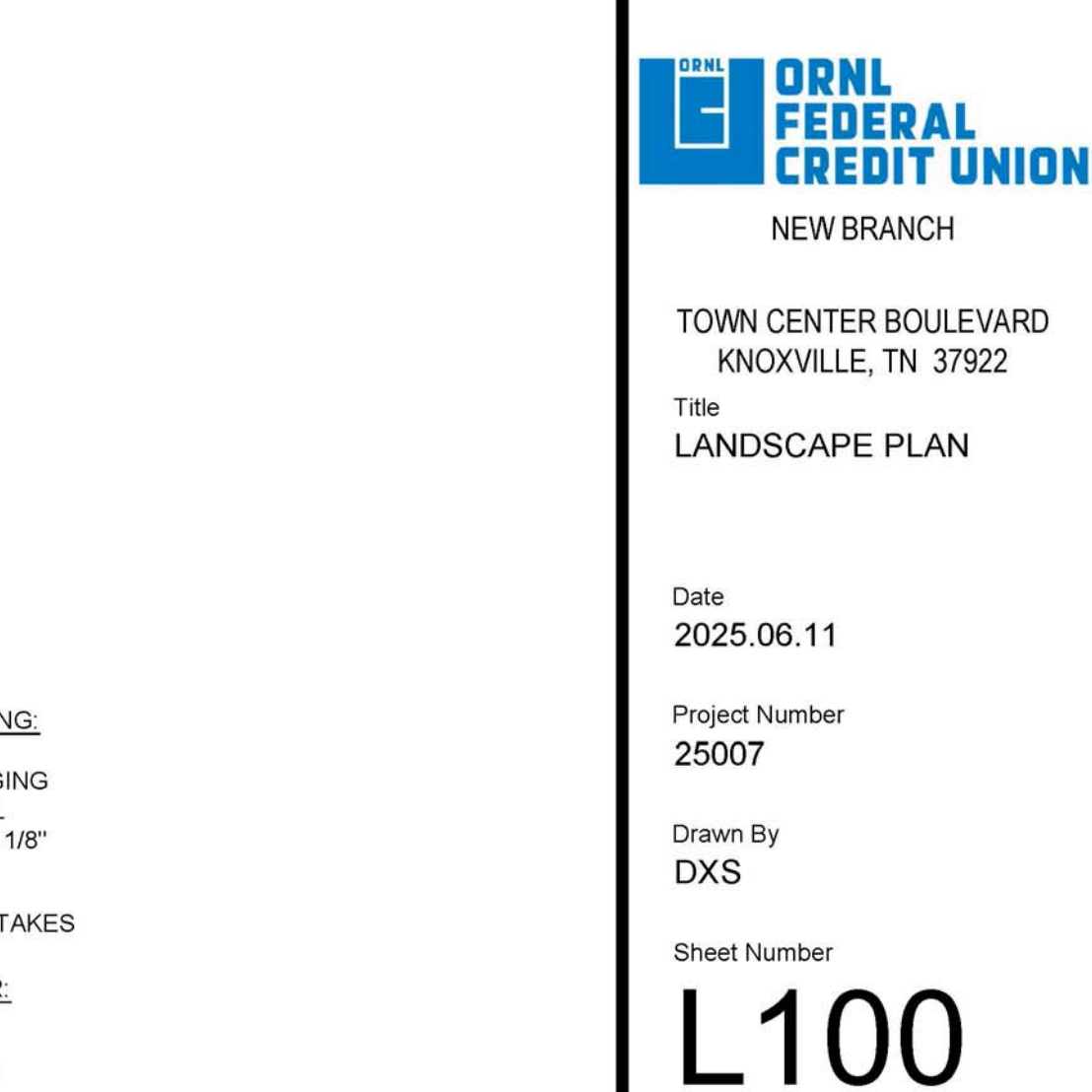
P3 TYPICAL SHRUB PLANTING
NTS



P4 TYPICAL PLANT SPACING
NTS



P5 METAL LANDSCAPE EDGING
NTS



P6 ROCK MULCH
NTS

PLANT LIST:							
Species	QTY.	SYM.	Botanical Name	Common Name	Size	Type	On-Center Spacing
# TREES							
14.3%	3	CC	Cercis canadensis	Eastern Redbud	2.5" cal.	B&B	as shown
19.0%	4	LI	Lagerstroemia indica x fauriei 'Natchez'	Natchez Crape Myrtle	8' ht.	25 gal.	clump
19.0%	4	LS	Liquidambar styraciflua	Sweet Gum	2.5" cal.	2.5" cal.	as shown
19.0%	4	QF	Quercus falcata	Southern Red Oak	2.5" cal.	B&B	as shown
28.6%	6	ZS	Zelkova serrata 'Green Vase'	Green Vase Zelkova	3" cal.	B&B	as shown
# SHRUBS							
0.0%		BGV	Buxus x 'Green Velvet'	Green Velvet Boxwood	#5	cont.	18" min.
0.0%		CAH	Clethra alnifolia 'Hummingbird'	Hummingbird Summersweet	#3	cont.	18" min.
0.0%		FMA	Fothergilla x 'Mount Airy'	Mount Airy Fothergilla	#3	cont.	18" min.
0.0%		HPW	Hydrangea paniculata 'White Diamonds'	White Diamonds Hydrangea	#5	cont.	30"
0.0%		HSC	Hydrangea serrata 'Coerulea Lace'	Coerulea Lace Hydrangea	#3	cont.	48 in.
0.0%		IGS	Ilex glabra 'Shamrock'	Shamrock Inkberry	#5	cont.	30"
0.0%		IVS	Itea virginica 'Sprich'	Little Henry Dwarf Sweetspire	#5	cont.	18" min.
0.0%		JCM	Juniperus chinensis 'Mint Julep'	Mint Julep Juniper	#5	cont.	30"
0.0%		JCP	Juniperus chinensis pfitzeriana 'Kallay'	Kallay Juniper	#5	cont.	18" min.
0.0%		PFM	Potentilla fruticosa 'McKay's White'	McKay's White Potentilla	#3	cont.	18" min.
0.0%		RCC	Rhododendron catalwbiense 'Chionoides'	Chionoides Rhododendron	#5	cont.	18-24"
0.0%		RRX	Rhododendron 'Ramapo'	Ramapo Rhododendron	#2	cont.	10-12"
0.0%		SBM	Spirea x bumalda 'Monhub'	Limemound Spirea	#5	cont.	30"
0.0%		TOT	Thuja occidentalis 'T'echny'	Mission Arborvitae	4' ht.	B&B	48 in.
0.0%		VxB	Viburnum x burkwoodii	Burkwood Viburnum	4' ht.	B&B	36 in.
0.0%		VDR	Viburnum dentatum 'Rastzom'	Raspberry Tart Rastzom Viburnum	#5	cont.	18" min.
0.0%		VON	Viburnum opulus 'Nanum'	Dwarf European Cranberrybush	#5	cont.	36 in.
LOW SHRUBS / GROUND COVER							
		DGN	Deutzia gracilis 'Nikko'	Nikko Slender Deutzia	#2	cont.	10-12"
		HCA	Hypericum calcycinum	Aaronsbeard St. Johnswort	#1	cont.	30 in.
		JSB	Juniperus sabina 'Buffalo'	Buffalo Juniper	#3	cont.	36 in.
		PTG	Pachysandra terminalis 'Green Carpet'	Pachysandra	2 1/4"	pp.	flat(50)
PERENNIALS / GRASSES							
		HSO	Hemerocallis 'Stella D'Oro'	Stella D'Oro Daylily	#1.5	cont.	18 in.
		LAH	Lavandula angustifolia 'Hidecole'	Hidecole Lavender	#2	cont.	18 in.
		LMB	Liriope muscari 'Big Blue'	Big Blue Liriope	#1	cont.	18 in.
		LMG	Liriope muscari 'Gold Band'	Gold Band Liriope	#1	cont.	18 in.
		POK	Pennisetum orientale 'Karly Rose'	Karly Rose Fountain Grass	#3	cont.	30 in.

- LANDSCAPE NOTES:
- PLANTING SHALL BE IN ACCORDANCE WITH THE RECOMMENDED PRACTICE OF THE AMERICAN SOCIETY OF NURSERYMEN.
 - PLANTS SHALL MAINTAINED AND GUARANTEED FOR ONE CONTINUOUS PLANTING SEASON, FROM THE TIME OF INSTALLATION.
 - FOR ANY LANDSCAPE AREA DESIGNATED TO REMAIN, WHETHER ON OR OFF-SITE, REMOVE WEEDS, ROCKS, CONSTRUCTION MATERIALS, ETC.
 - CLEAN UP OF DEBRIS AND RESTORATION SHALL INCLUDE AREAS WITHIN AND BEYOND THE PROPERTY LINES, INCLUDING BUT NOT LIMITED TO RIGHT-OF-WAYS, CURBS AND GUTTERS, ETC.
 - SCARIFY ALL AREAS PRIOR TO TOPSOIL PLACEMENT.
 - TOPSOIL SHALL NOT BE PLACED OR WORKED WHILE FROZEN OR WET.
 - PLACE TOPSOIL UNIFORMLY TO PREVENT UNEVEN SETTLEMENT.
 - DEPTH OF TOPSOIL IS TO BE:
 - A MINIMUM OF TEN (10) INCHES IN PLANTING BEDS
 - A MINIMUM OF FOUR (4) INCHES IN LAWN AREAS.
 - FINISHED GRADES SHALL BE INSTALLED AS FOLLOWS:
 - ISLANDS: SHALL BE INSTALLED ONE (1) INCH LOWER THAN THE TOP OF THE SURROUNDING CURBS AND SIDEWALKS.
 - SLAB ON GRADE STRUCTURES: SHALL BE FOUR (4) INCHES BELOW FINISHED FLOOR (1" TO TOP OF MULCH)
 - PLANTING BEDS ARE DEFINED AS ANY AREA WITHIN THE PROJECT THAT IS NOT A HARD SURFACE, STRUCTURE, OR GRAPHICALLY SHOWN TO BE SODDED OR SEEDED.
 - PROVIDE A WEED MAT FOR ALL PLANTING AREAS.
 - METAL LANDSCAPE EDGING SHALL SEPARATE ALL PLANTING BEDS AND MULCH RINGS FROM LAWN AREAS, see detail.
 - COORDINATE INSTALLATION OF TREES AND SHRUBS WITH UNDERGROUND UTILITIES, LOT LIGHTS, UNDERGROUND STORM SYSTEM, ETC.
 - ALL TREES SHALL BE PLANTED AND MAINTAINED TO GROW UPRIGHT AND PLUMB.
 - FREE STANDING CANOPY TREES (as shown) SHALL HAVE A MULCH RING OF FIVE (5) FEET IN DIAMETER (MAX).
 - MULCH PLANTING BEDS A MINIMUM OF THREE (3) INCHES DEEP WITH ORGANIC MULCH FREE OF DELETERIOUS MATERIALS AND SUITABLE FOR TOP DRESSING OF TREES, SHRUBS, AND OTHER PLANT MATERIALS. MULCH MATERIAL SHALL BE AGED SHREDDED HARDWOOD OR GROUND SHREDDED BARK.
 - SEE EROSION & SEDIMENTATION CONTROL DETAILS FOR TEMPORARY SEEDING REQUIREMENTS.
 - SEE EROSION & SEDIMENTATION CONTROL PLANS FOR TYPE AND LOCATION OF EROSION CONTROL BLANKETS AND OTHER EROSION CONTROL MEASURES.



LARSON
• KARLE
ARCHITECTS

Warren
3 Farm Colony Drive • Warren, PA 15085
814 • 725 • 6010
Pittsburgh
1601 Marys Ave., Suite 203 • Pittsburgh, PA 15215
412 • 654 • 1553
Erie
1949 W. 26th St., Suite 38 • Erie, PA 16508
814 • 652 • 7807

MUNICIPAL

ADDENDUMS		
No.	Date	Name
	07.21.2025	MPC comment
	07.28.2025	MPC comment



Project



NEW BRANCH

TOWN CENTER BOULEVARD
KNOXVILLE, TN 37922

Title
LANDSCAPE PLAN

Date
2025.06.11

Project Number
25007

Drawn By
DXS

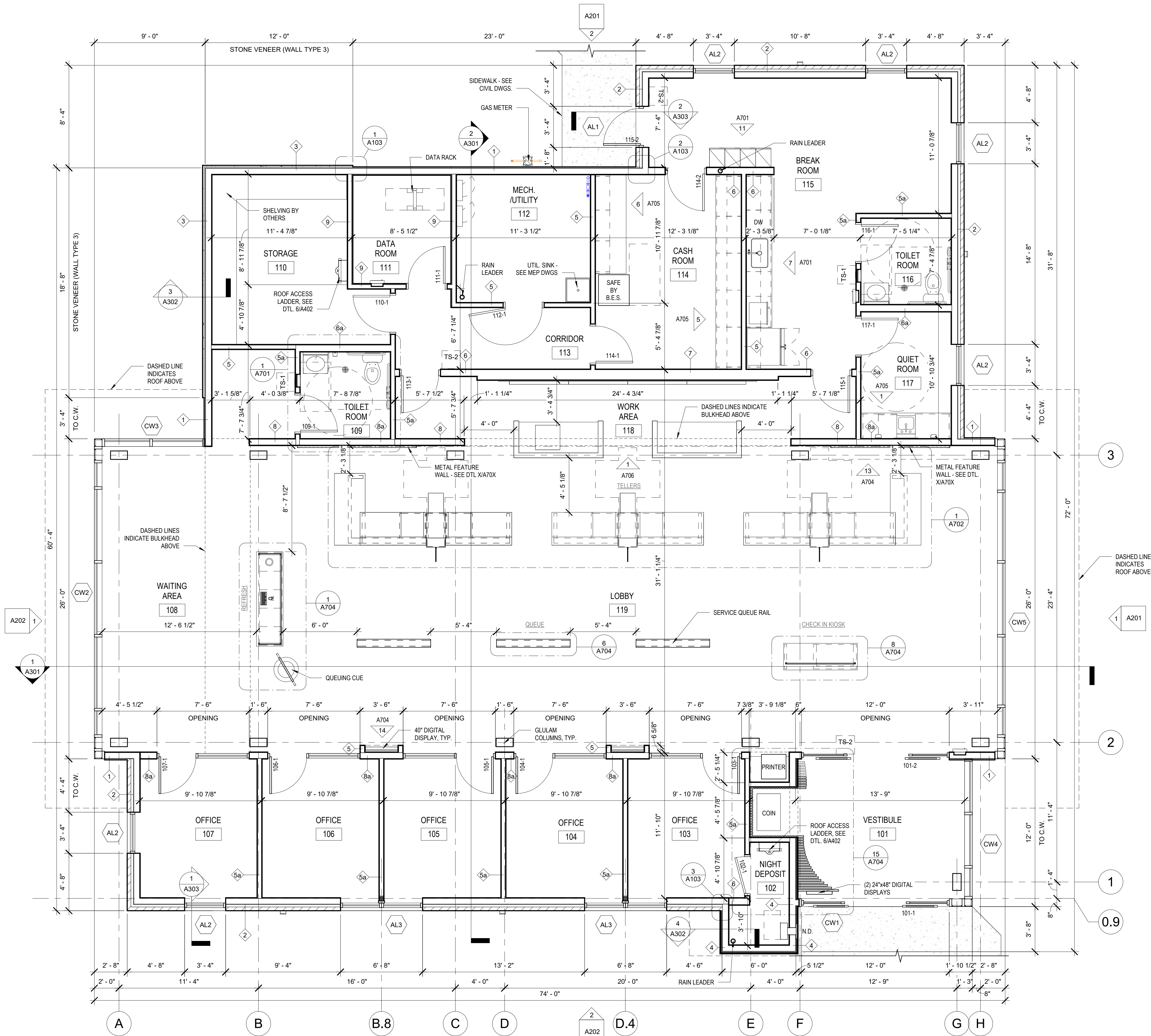
Sheet Number

L100

ARCHITECTURE • INTERIOR DESIGN
LANDSCAPE ARCHITECTURE • SPACE PLANNING
© 2025 All Rights Reserved Larson Karle Architects

Revised: 7/28/2025

MPC PLANNING FILE # 8-E-25-SU



GENERAL NOTES

- DO NOT SCALE DRAWINGS.
- ALL INTERIOR PARTITIONS ARE WALL TYPE "S" UNLESS NOTED OTHERWISE. SEE DRAWING A103 FOR ALL WALL & PARTITION TYPES.
- JOINTS IN DRYWALL PARTITIONS SHALL BE TAPED OVER THE FULL HEIGHT OF THE PARTITION.
- STUD PARTITIONS TO HAVE DOUBLE STUDS AT ALL DOOR JAMB OPENINGS AND TRIPLE STUDS @ CORNERS.
- PROVIDE ACOUSTIC SEALANT AT ALL PARTITIONS WHICH CONTAIN SOUND ATTENUATION BLANKET. SET BOTTOM PLATE IN TWO CONTINUOUS BEADS OF SEALANT.
- DIMENSIONS ARE TAKEN AS FOLLOWS (U.N.O.):
 - INTERIOR PARTITIONS (INCLUDING BULKHEADS) - FACE OF STUD.
 - EXTERIOR WALLS - FACE OF SHEATHING AND FACE OF BRICK.
 - WALL & PARTITION TYPES - FULL ACTUAL THICKNESS.
 - DOORS & BORROWED LIGHTS - DOOR OR GLASS DIMENSION.
 - MILLWORK - FACE OF DRYWALL TO FACE OF MILLWORK AND FACE OF MILLWORK TO FACE OF OTHER MILLWORK.
- CONTRACTOR SHALL PROVIDE WOOD BLOCKING FOR ALL WALL-MOUNTED ITEMS.
- CONFIRM FINAL LOCATIONS OF FIRE EXTINGUISHERS IN FIELD WITH OWNER AND LOCAL FIRE DEPARTMENT.
- GYPSUM WALLBOARD WITHIN 2 FEET OF WATER CLOSETS & MOP BASINS SHALL BE MOISTURE RESISTANT AND INSTALLED TO A MIN. HEIGHT OF 4 FEET ABOVE THE FLOOR. MOISTURE RESISTANT G.W.B. SHALL BE INSTALLED AT ALL LOCATIONS WHERE WALL TILE IS SCHEDULED FOR INSTALLATION. SEE WALL TYPES & INTERIOR FINISHES FOR FURTHER COORDINATION.

BANK EQUIPMENT NOTES

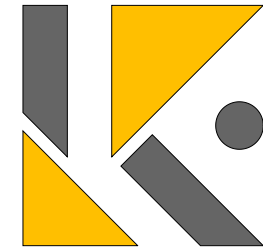
NOTE:
COORDINATE AND/OR VERIFY THE FOLLOWING WITH BANK EQUIPMENT SUPPLIER AND PROVIDE SUPPORT ASSEMBLIES AS DIRECTED BY SHOP DRAWINGS FROM BANK EQUIPMENT SUPPLIER (B.E.S.).

- SIZE, LOCATION AND INSTALLATION SUPPORT REQUIREMENTS FOR ALL EQUIPMENT SUPPLIED BY B.E.S.
- WIRING AND CONDUIT SIZE AND LOCATION FOR ALL EQUIPMENT SUPPLIED BY B.E.S.
- LOCATION, NUMBER AND SIZE OF PIPE BOLLARDS AROUND BANK EQUIPMENT.

SECURITY SYSTEM NOTES

NOTE:
COORDINATE AND/OR VERIFY THE FOLLOWING WITH SECURITY EQUIPMENT SUPPLIER (IF NOT B.E.S.) AND PROVIDE SUPPORT ASSEMBLIES AS DIRECTED BY SHOP DRAWINGS FROM SECURITY EQUIPMENT SUPPLIER (S.E.S.).

- SIZE, LOCATION AND INSTALLATION SUPPORT REQUIREMENTS FOR ALL EQUIPMENT SUPPLIED BY SECURITY EQUIPMENT SUPPLIER (S.E.S.).
- WIRING AND CONDUIT SIZE AND LOCATION FOR ALL EQUIPMENT SUPPLIED BY S.E.S.



LARSON
• KARLE
ARCHITECTS

Warren
3 Farm Colony Drive • Warren, PA 16365
814 • 728 • 6010
Pittsburgh
1601 Marys Ave., Suite 208 • Pittsburgh, PA 15215
412 • 904 • 1553
Erie
1948 W. 26th St., Suite 38 • Erie, PA 16508
814 • 453 • 7507

50% PROGRESS

ADDENDUMS

No.	Date	Name



Project



NORTHSHORE BRANCH
2077 TOWN CENTER
BOULEVARD
KNOXVILLE, TN 37922
Title
FIRST FLOOR PLAN

Date

06/02/2025

Project Number

25007

Drawn By

GMD

Sheet Number

A101

ARCHITECTURE • INTERIOR DESIGN
LANDSCAPE ARCHITECTURE • SPACE PLANNING
© All Rights Reserved Larson Karle Architects

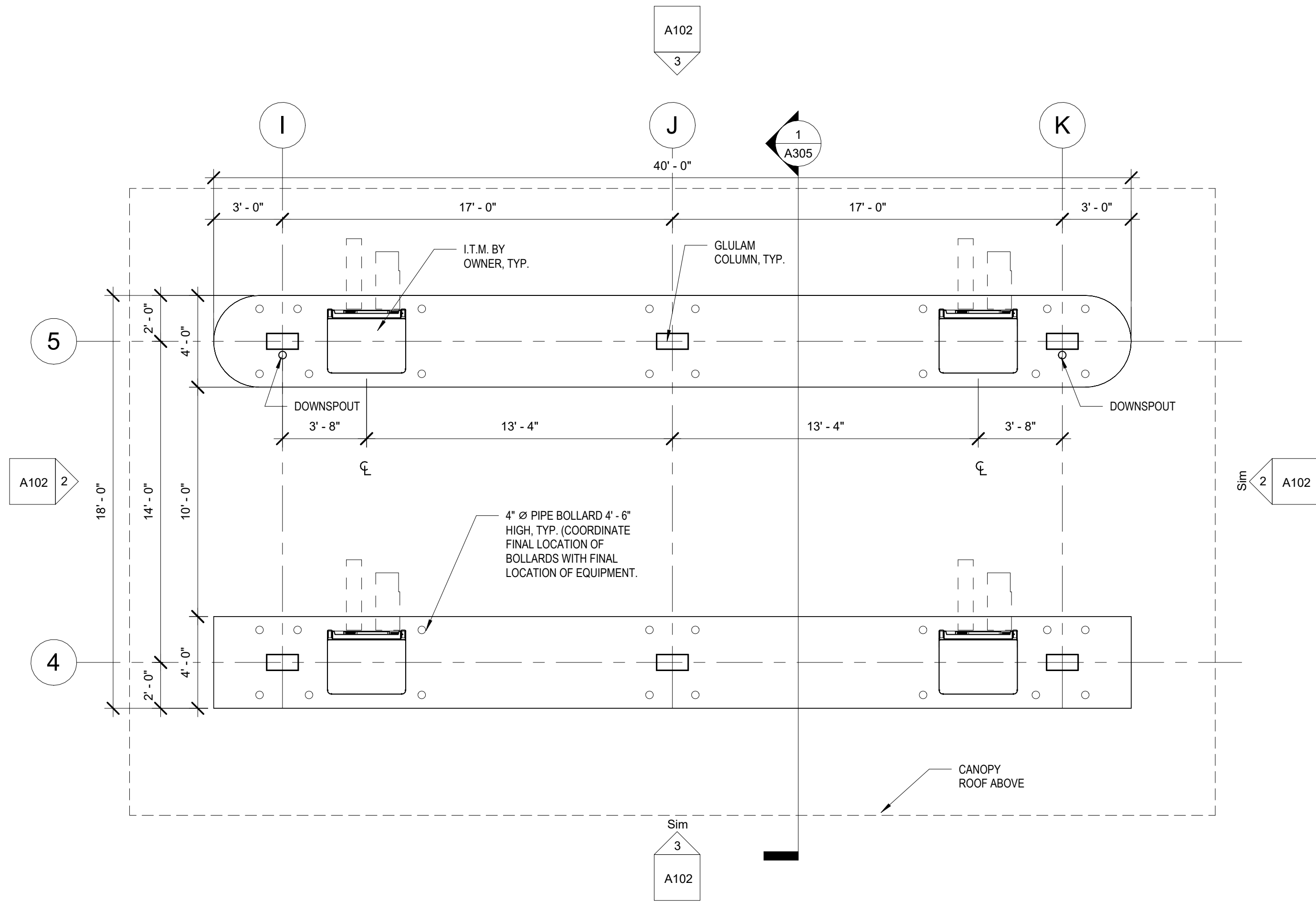
Revised: 7/28/2025

MPC PLANNING FILE # 8-E-25-SU

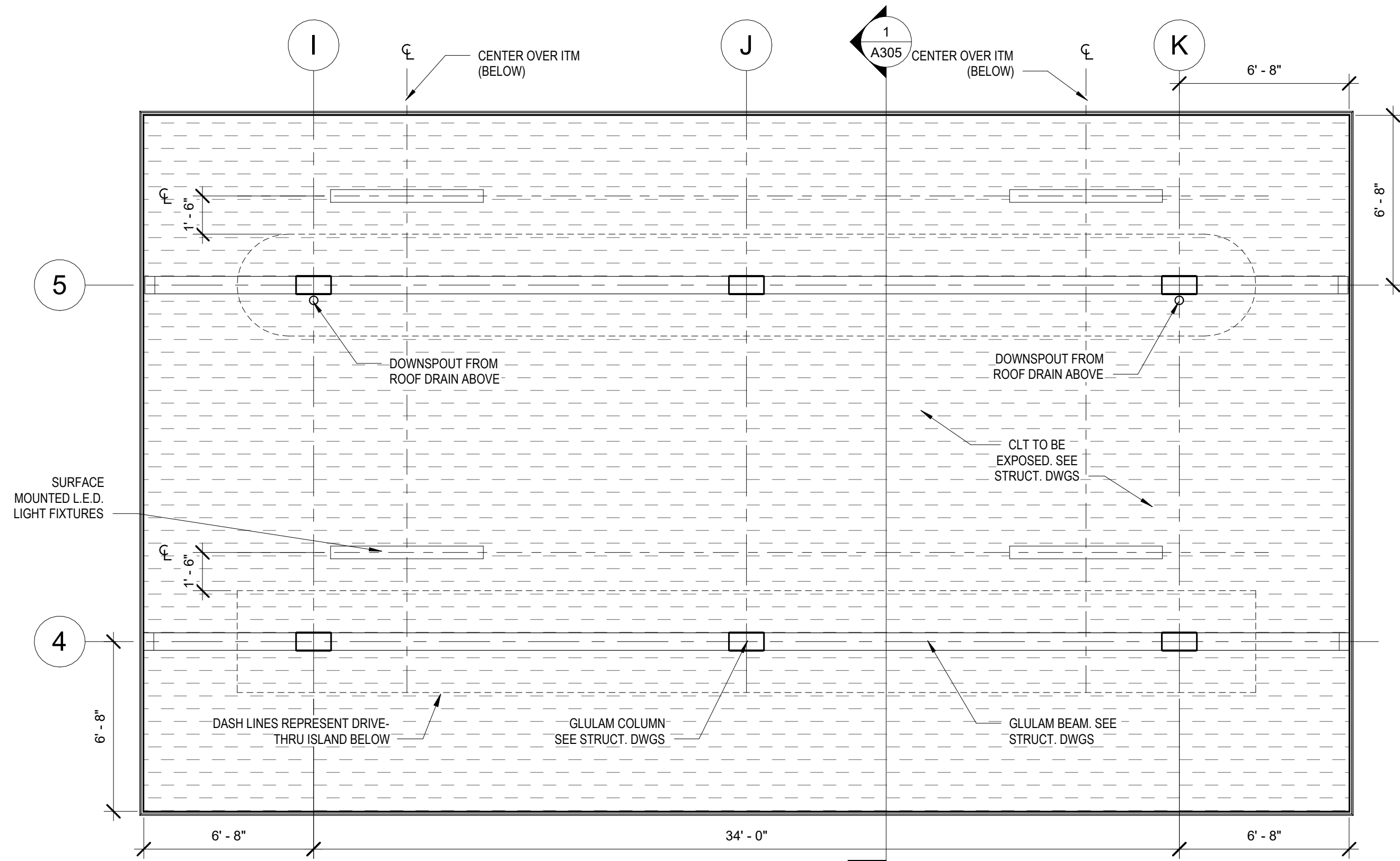


1 FIRST FLOOR PLAN
1/4" = 1'-0"

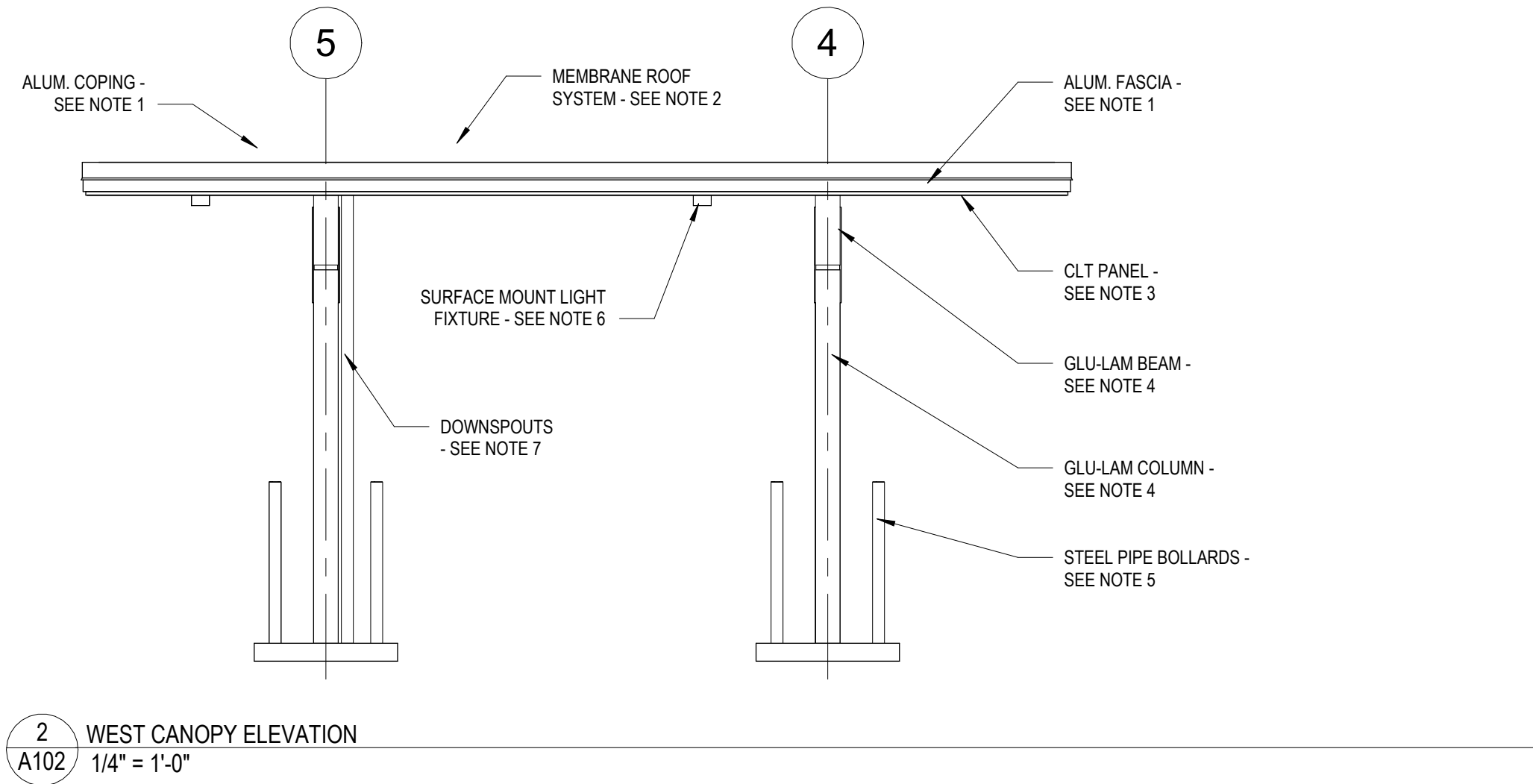
6/6/2025 3:15:09 PM



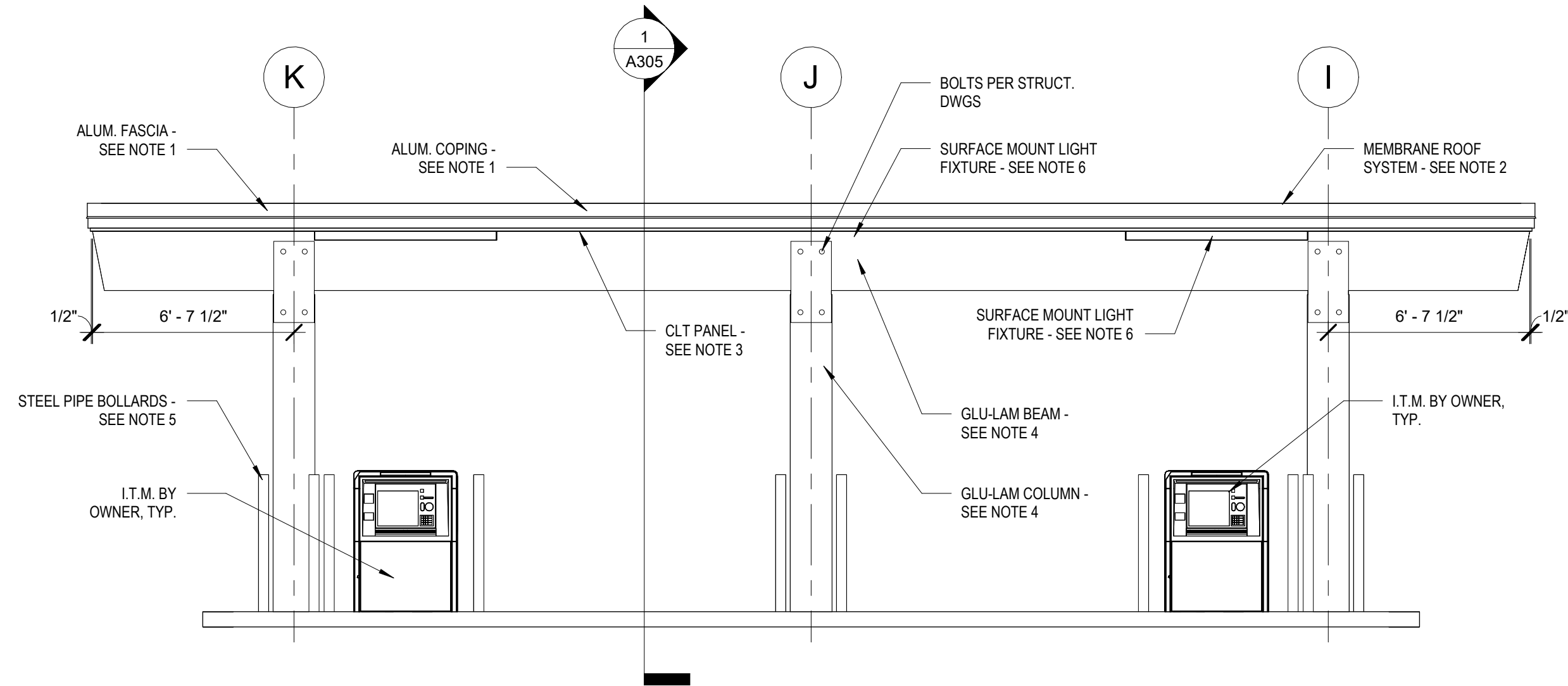
1
A102 ITM CANOPY PLAN
1/4" = 1'-0"



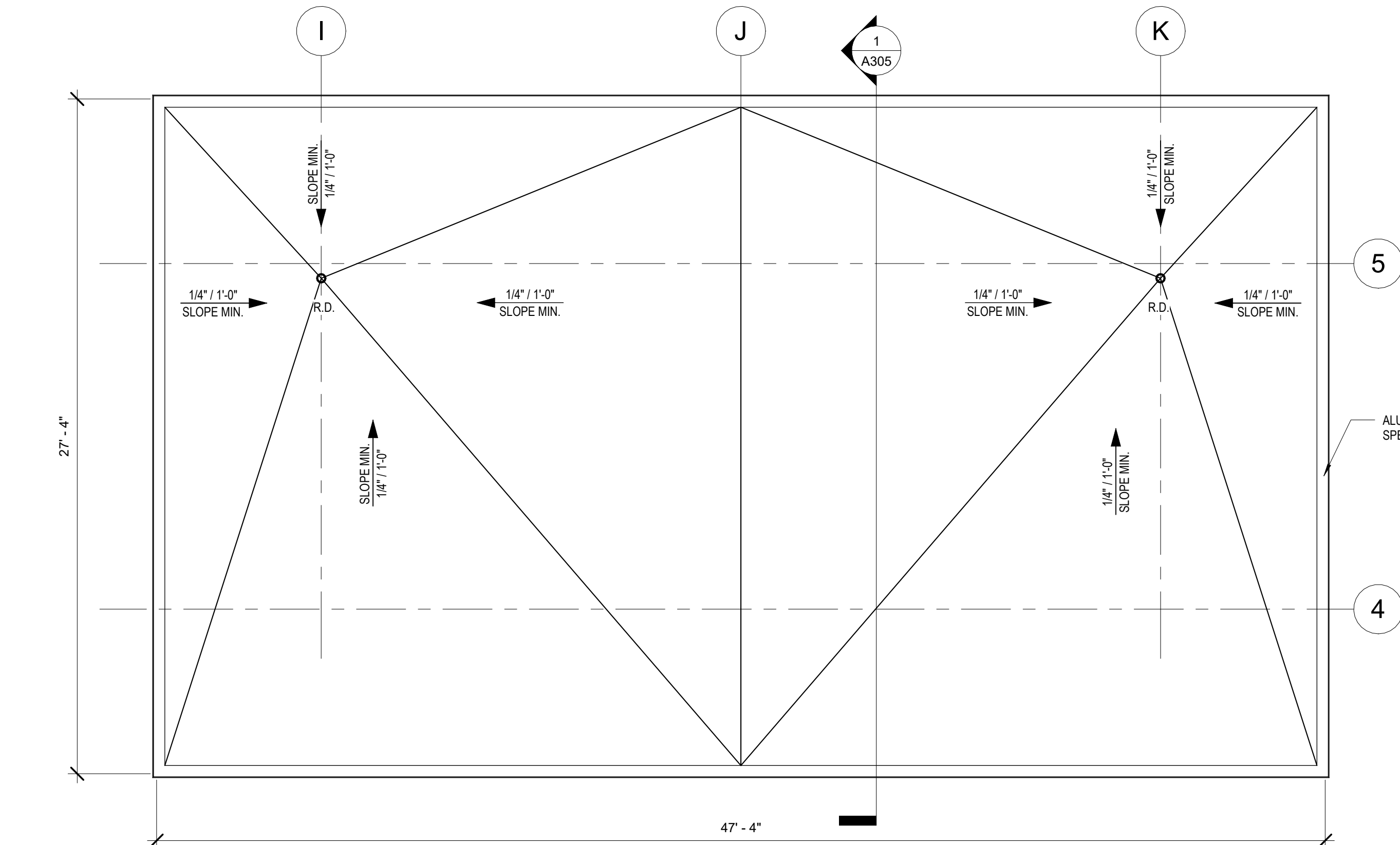
4
A102 CANOPY REFLECTED CEILING PLAN
1/4" = 1'-0"



2
A102 WEST CANOPY ELEVATION
1/4" = 1'-0"



3
A102 NORTH CANOPY ELEVATION
1/4" = 1'-0"



5
A102 CANOPY ROOF PLAN
1/4" = 1'-0"

GENERAL NOTES

- SEE A305 FOR ITM CANOPY SECTION DETAILS.

BANK EQUIPMENT NOTES

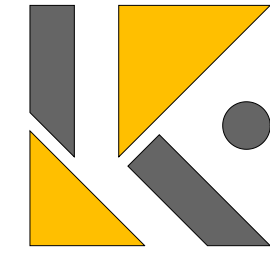
NOTE:
COORDINATE AND/OR VERIFY THE FOLLOWING WITH BANK
EQUIPMENT SUPPLIER AND PROVIDE SUPPORT ASSEMBLIES AS
DIRECTED BY SHOP DRAWINGS FROM BANK EQUIPMENT SUPPLIER
(B.E.S.).

- SIZE, LOCATION AND INSTALLATION SUPPORT REQUIREMENTS
FOR ALL EQUIPMENT SUPPLIED BY B.E.S.
- WIRING AND CONDUIT SIZE AND LOCATION FOR ALL EQUIPMENT
SUPPLIED BY B.E.S.
- LOCATION, NUMBER AND SIZE OF PIPE BOLLARDS AROUND BANK
EQUIPMENT.
- LOCATION, SIZE AND ROUGH OPENING REQUIREMENTS FOR
NIGHT DEPOSITORY AND A.T.M.
- PROVIDE WALL OPENING AND WALL CONFIGURATION IN VARYING
THICKNESS FOR NIGHT DEPOSITORY & A.T.M.

ITM CANOPY FINISH MATERIALS

- METAL FASCIA / COPING
MANUFACTURER: ATAS
TYPE 1:
TYPE 2:
COLOR: BLACK
- MEMBRANE ROOF SYSTEM
MANUFACTURER: CARLISLE
SYSTEM: FULLY-ADHERED
THICKNESS: 60 MILS.
COLOR: BLACK
- CLT PANEL:
MANUFACTURER: SMARTLAM
SPECIES: SOUTHERN YELLOW PINE
SIZE: 5-PLY
FINISH:
- GLU-LAMINATED TIMBER:
MANUFACTURER: SMARTLAM
SPECIES: SOUTHERN YELLOW PINE
COLUMN SIZE:
BEAM SIZE:
FINISH:
- STEEL PIPE BOLLARDS
MANUFACTURER:
COLOR:
- PRIMED & PAINTED.
- INSTALL PIPE BOLLARD SLEEVES. SEE DTL. XXXX.
- EXTERIOR SURFACE MOUNT LIGHT FIXTURES:
- SEE ELEC. DWGS.
- GUTTERS, DOWNSPOUTS, & EXPOSED RAIN LEADERS
MANUFACTURER: ATAS
BOX GUTTER
SIZE: 6" x 7"
DOWNSPOUTS
SIZE: 3" x 4"
COLOR: BLACK
- PROVIDE ELBOWS AS REQUIRED FOR PROFILES SHOWN.
WHERE CONT. GUTTER LENGTH EXCEEDS 40'-0", PROVIDE
MANUFACTURER'S STANDARD EXPANSION JOINT.

** ALL COLORS TO BE SELECTED BY ARCHITECT FROM
MANUFACTURER'S STANDARD COLORS



LARSON
• KARLE
ARCHITECTS

Warren
3 Farm Colony Drive • Warren, PA 16365
814 • 728 • 6510
Pittsburgh
1601 Marys Ave., Suite 206 • Pittsburgh, PA 15215
412 • 904 • 1553
Erie
1946 W. 26th St., Suite 38 • Erie, PA 16508
814 • 453 • 7607

50% PROGRESS

ADDENDUMS

No.	Date	Name



Project



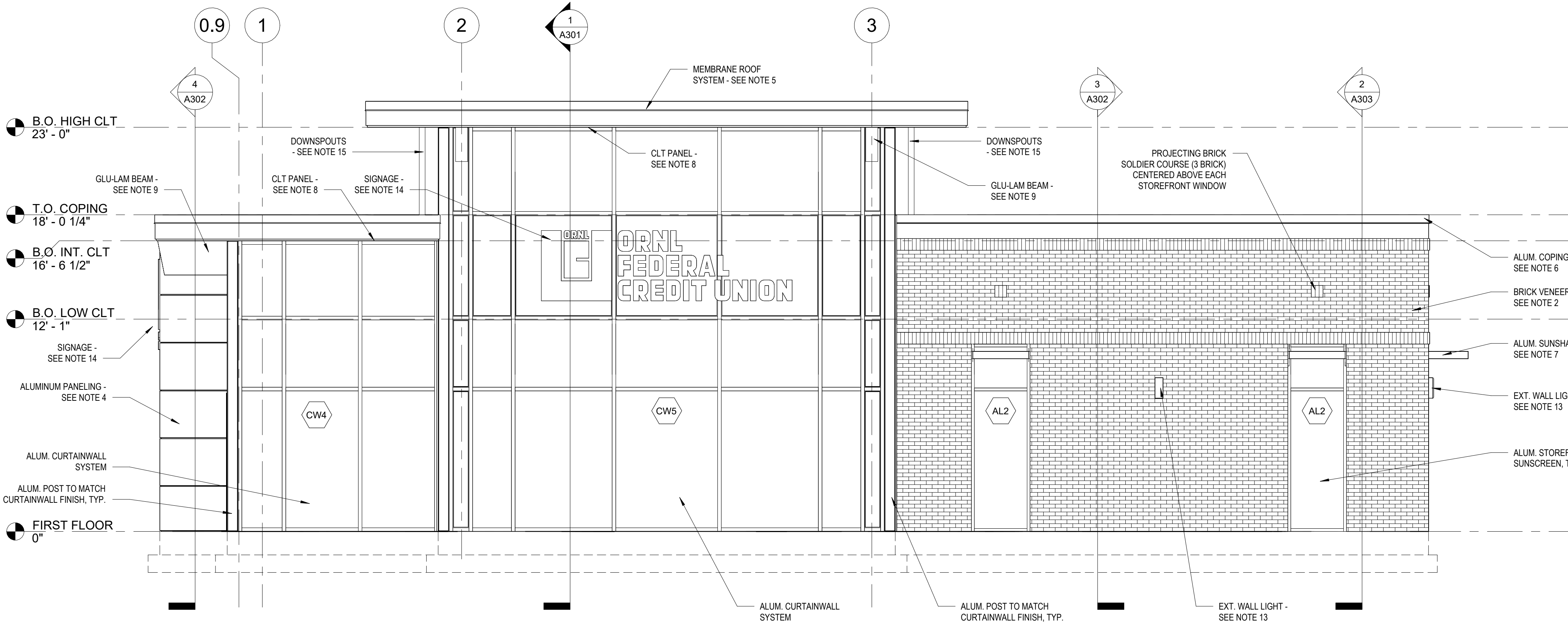
NORTHSHORE BRANCH
2077 TOWN CENTER
BOULEVARD
KNOXVILLE, TN 37922
Title
ITM CANOPY PLANS &
ELEVATIONS

Date
06/02/2025
Project Number
25007
Drawn By
GMD
Sheet Number

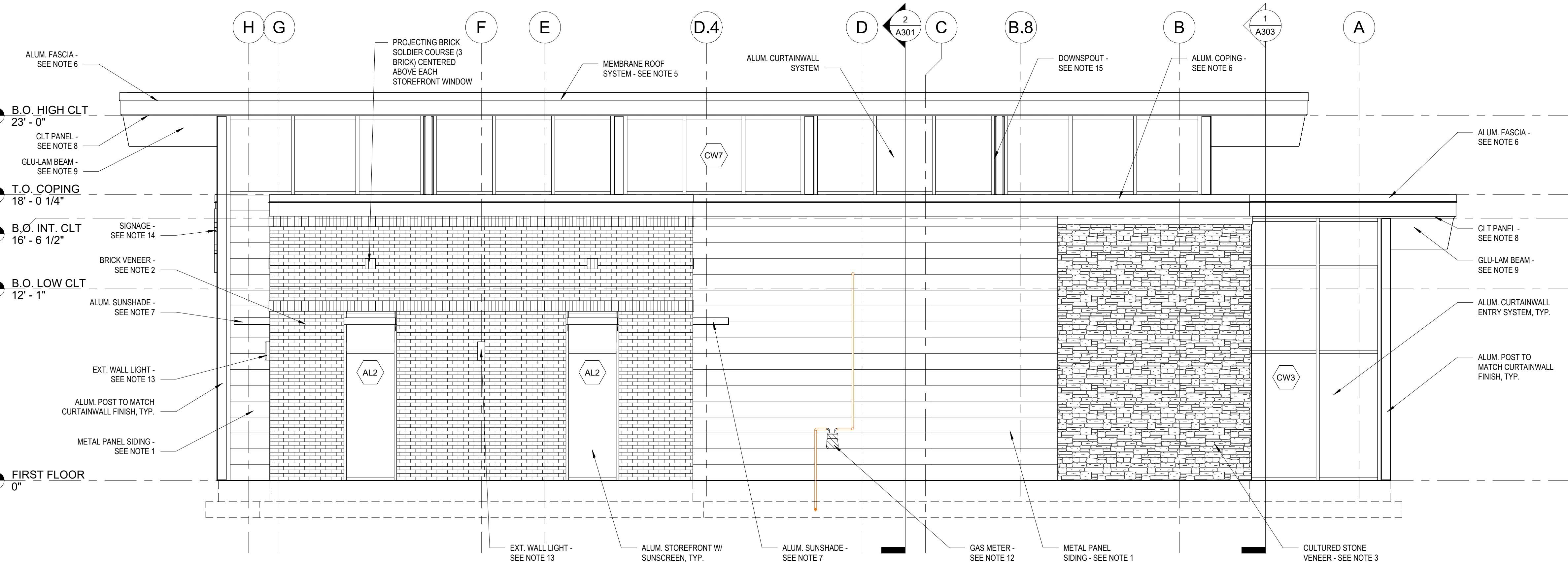
A102

ARCHITECTURE • INTERIOR DESIGN
LANDSCAPE ARCHITECTURE • SPACE PLANNING
© All Rights Reserved Larson Karle Architects

Revised: 7/28/2025
MPC PLANNING FILE # 8-E-25-SU



1 EAST BUILDING ELEVATION
1/4" = 1'-0"



2 NORTH BUILDING ELEVATION
1/4" = 1'-0"

GENERAL NOTES

- SEE A401 FOR DOWNSPOUT LOCATIONS.
- SEE A102 FOR ITM CANOPY FINISH MATERIALS & NOTES

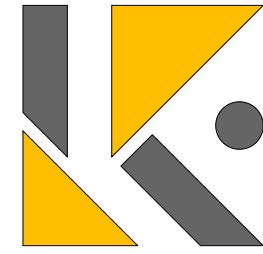
BANK EQUIPMENT NOTES

- NOTE:
COORDINATE AND/OR VERIFY THE FOLLOWING WITH BANK EQUIPMENT SUPPLIER AND PROVIDE SUPPORT ASSEMBLIES AS DIRECTED BY SHOP DRAWINGS FROM BANK EQUIPMENT SUPPLIER (B.E.S.).
- SIZE, LOCATION AND INSTALLATION SUPPORT REQUIREMENTS FOR ALL EQUIPMENT SUPPLIED BY B.E.S.
 - WIRING AND CONDUIT SIZE AND LOCATION FOR ALL EQUIPMENT SUPPLIED BY B.E.S.
 - LOCATION, NUMBER AND SIZE OF PIPE BOLLARDS AROUND BANK EQUIPMENT.
 - LOCATION, SIZE AND ROUGH OPENING REQUIREMENTS FOR NIGHT DEPOSITORY AND A.T.M.
 - PROVIDE WALL OPENING AND WALL CONFIGURATION IN VARYING THICKNESS FOR NIGHT DEPOSITORY & A.T.M.

EXTERIOR FINISH MATERIALS

- METAL PANEL SIDING
MANUFACTURER: ATAS
TYPE: VERSA-SEAM
SIZE: 12"
COLOR: BLACK
- BRICK VENEER
MANUFACTURER:
SIZE: 3 1/2" W x 3 5/8" H x 7 5/8" L
NAME: TERRA HAUTE ARCHITECTURAL SERIES
COLOR: SADDLE
MORTAR: ARGOS
COLOR: MAGNOLIA MASON'S MIX
- STONE VENEER
MANUFACTURER: CULTURED STONE
STYLE: HEVYN STONE
SIZE: 22" L x 5" H
COLOR: SPAN
PRECAST CONCRETE CAP
COLOR: TO MATCH STONE VENEER
- ALUMINUM COMPOSITE PANELS
MANUFACTURER: ARCONIC
TYPE: REYNOBOND COMPOSITE MATERIAL
SIZE:
COLOR:
- MEMBRANE ROOF SYSTEM
MANUFACTURER: CARLISLE
SYSTEM: FULLY-ADHERED
THICKNESS: 60 MILS.
COLOR: BLACK
- METAL FASCIA / COPING
MANUFACTURER: ATAS
TYPE 1:
TYPE 2:
COLOR: BLACK
- ALUMINUM SUNSHADE:
MANUFACTURER: KAWNEER
STYLE: VERSOLEIL
OUTRIGGER: 30" SQUARE
FASCIA: RECTANGULAR
BLADE: PLANAR
COLOR: #29 BLACK ANODIZED
- CLT PANEL:
MANUFACTURER: SMARTLAM
SPECIES: SOUTHERN YELLOW PINE
SIZE: 5-PLY
FINISH:
- GLU-LAMINATED TIMBER:
MANUFACTURER: SMARTLAM
SPECIES: SOUTHERN YELLOW PINE
COLUMN SIZE:
BEAM SIZE:
FINISH:
- MECHANICAL/ PLUMBING VENTS
- SEE MEP DWGS.
- THRU-WALL VENTS: FINISH COLOR TO MATCH ADJACENT WALL COLOR. COLOR AS APPROVED BY ARCHITECT.
- ELECTRICAL METER SOCKET & CONDUIT
- SEE MEP DWGS.
- PAINT TO MATCH ADJACENT WALL COLOR. COLOR AS APPROVED BY ARCHITECT.
- GAS METER
- SEE MEP DWGS.
- PAINT PIPING TO MATCH ADJACENT WALL COLOR. COLOR AS APPROVED BY ARCHITECT.
- EXTERIOR WALL LIGHTING SCONCE
- SEE ELEC. DWGS.
- SIGNAGE
- SUPPLIED BY OWNER, INSTALLED BY G.C.
- G.C. TO PROVIDE ELECTRICAL CONNECTIONS & NECESSARY BLOCKING AS REQUIRED.
- GUTTERS, DOWNSPOUTS, & EXPOSED RAIN LEADERS
MANUFACTURER: ATAS
BOX GUTTER
SIZE: 6" x 7"
DOWNSPOUTS
SIZE: 3" x 4"
COLOR: BLACK
- PROVIDE ELBOWS AS REQUIRED FOR PROFILES SHOWN.
WHERE CONT. GUTTER LENGTH EXCEEDS 40'-0", PROVIDE MANUFACTURER'S STANDARD EXPANSION JOINT.

** ALL COLORS TO BE SELECTED BY ARCHITECT FROM MANUFACTURER'S STANDARD COLORS



LARSON
• KARLE
ARCHITECTS

Warren
3 Farm Colony Drive • Warren, PA 16365
814 • 728 • 6510
Pittsburgh
1601 Marys Ave., Suite 206 • Pittsburgh, PA 15215
412 • 904 • 1553
Erie
1946 W. 28th St., Suite 38 • Erie, PA 16508
814 • 453 • 7607

50% PROGRESS

ADDENDUMS

No.	Date	Name



Project



NORTHSHORE BRANCH
2077 TOWN CENTER
BOULEVARD
KNOXVILLE, TN 37922
Title
BUILDING ELEVATIONS

Date

06/02/2025

Project Number

25007

Drawn By

GMD

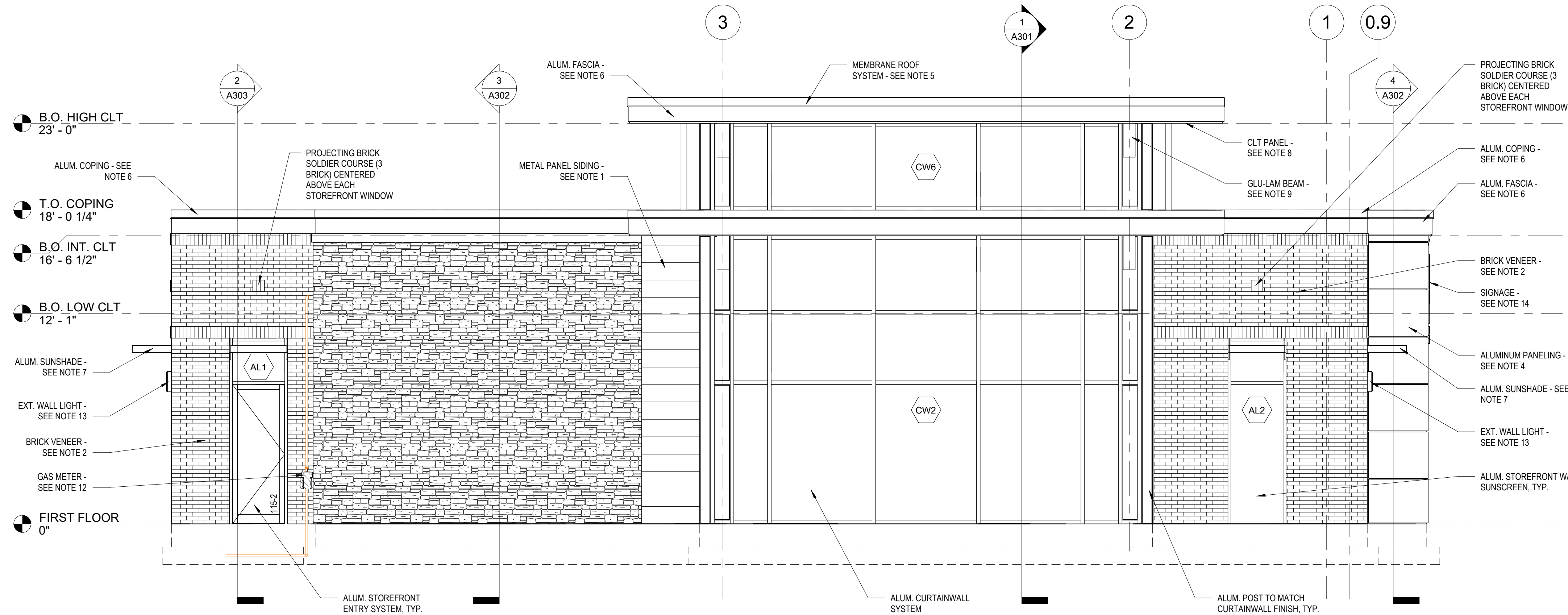
Sheet Number

A201

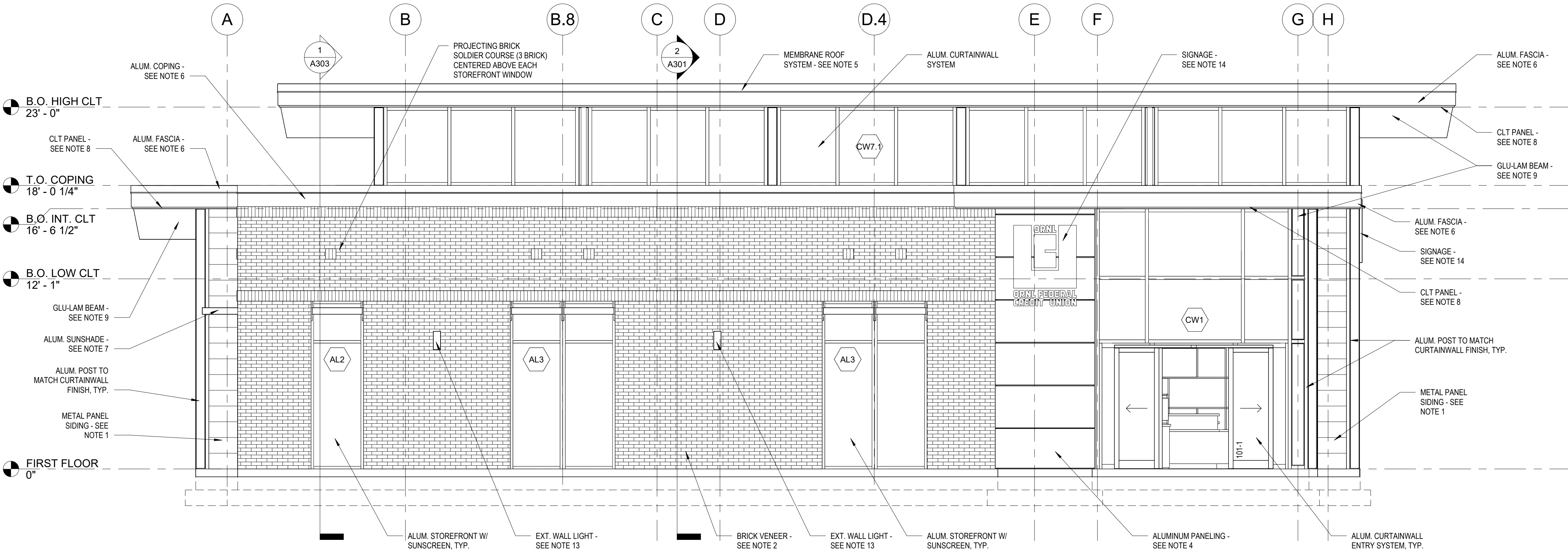
ARCHITECTURE • INTERIOR DESIGN
LANDSCAPE ARCHITECTURE • SPACE PLANNING
© All Rights Reserved Larson Karle Architects

Revised: 7/28/2025

MPC PLANNING FILE # 8-E-25-SU



1 WEST BUILDING ELEVATION
1/4" = 1'-0"



2 SOUTH BUILDING ELEVATION
1/4" = 1'-0"

GENERAL NOTES

1. SEE A401 FOR DOWNSPOUT LOCATIONS.

2. SEE A102 FOR TIM CANOPY FINISH MATERIALS & NOTES

BANK EQUIPMENT NOTES

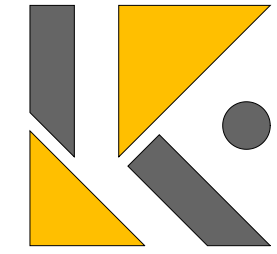
NOTE:
COORDINATE AND/OR VERIFY THE FOLLOWING WITH BANK EQUIPMENT SUPPLIER AND PROVIDE SUPPORT ASSEMBLIES AS DIRECTED BY SHOP DRAWINGS FROM BANK EQUIPMENT SUPPLIER (B.E.S.).

1. SIZE, LOCATION AND INSTALLATION SUPPORT REQUIREMENTS FOR ALL EQUIPMENT SUPPLIED BY B.E.S.
2. WIRING AND CONDUIT SIZE AND LOCATION FOR ALL EQUIPMENT SUPPLIED BY B.E.S.
3. LOCATION, NUMBER AND SIZE OF PIPE BOLLARDS AROUND BANK EQUIPMENT.
4. LOCATION, SIZE AND ROUGH OPENING REQUIREMENTS FOR NIGHT DEPOSITORY AND A.T.M.
5. PROVIDE WALL OPENING AND WALL CONFIGURATION IN VARYING THICKNESS FOR NIGHT DEPOSITORY & A.T.M.

EXTERIOR FINISH MATERIALS

1. METAL PANEL SIDING
MANUFACTURER: ATAS
TYPE: VERSA-SEAM
SIZE: 12"
COLOR: BLACK
2. BRICK VENEER
MANUFACTURER: SMARTLAM
SPECIES: SOUTHERN YELLOW PINE
COLUMN SIZE:
COLOR: SADDLE
MORTAR: ARGOS
COLOR: MAGNOLIA MASON'S MIX
3. STONE VENEER
MANUFACTURER: CULTURED STONE
STYLE: HEWN STONE
SIZE: 22" L x 5" H
COLOR: SPAN
PRECAST CONCRETE CAP
COLOR: TO MATCH STONE VENEER
4. ALUMINUM COMPOSITE PANELS
MANUFACTURER: ARCONIC
TYPE: REYNOBOND COMPOSITE MATERIAL
SIZE:
COLOR:
5. MEMBRANE ROOF SYSTEM
MANUFACTURER: CARLISLE
SYSTEM: FULLY-ADHERED
THICKNESS: 60 MILS.
COLOR: BLACK
6. METAL FASCIA / COPING
MANUFACTURER: ATAS
TYPE 1:
TYPE 2:
COLOR: BLACK
7. ALUMINUM SUNSHADE:
MANUFACTURER: KAWNEER
STYLE: VERSOLEIL
OUTRIGGER: 30" SQUARE
FASCIA: RECTANGULAR
BLADE: PLANAR
COLOR: #29 BLACK ANODIZED
8. CLT PANEL:
MANUFACTURER: SMARTLAM
SPECIES: SOUTHERN YELLOW PINE
SIZE: 5-PLY
FINISH:
9. GLU-LAMINATED TIMBER:
MANUFACTURER: SMARTLAM
SPECIES: SOUTHERN YELLOW PINE
COLUMN SIZE:
BEAM SIZE:
FINISH:
10. MECHANICAL / PLUMBING VENTS
- SEE MEP DWGS.
- THRU-WALL VENTS: FINISH COLOR TO MATCH ADJACENT WALL COLOR. COLOR AS APPROVED BY ARCHITECT.
11. ELECTRICAL METER SOCKET & CONDUIT
- SEE MEP DWGS.
- PAINT TO MATCH ADJACENT WALL COLOR. COLOR AS APPROVED BY ARCHITECT.
12. GAS METER
- SEE MEP DWGS.
- PAINT PIPING TO MATCH ADJACENT WALL COLOR. COLOR AS APPROVED BY ARCHITECT.
13. EXTERIOR WALL LIGHTING SCONCE
- SEE ELEC. DWGS.
14. SIGNAGE
- SUPPLIED BY OWNER, INSTALLED BY G.C.
- G.C. TO PROVIDE ELECTRICAL CONNECTIONS & NECESSARY BLOCKING AS REQUIRED.
15. GUTTERS, DOWNSPOUTS, & EXPOSED RAIN LEADERS
MANUFACTURER: ATAS
BOX GUTTER
SIZE: 6" x 7"
DOWNSPOUTS
SIZE: 3" x 4"
COLOR: BLACK
- PROVIDE ELBOWS AS REQUIRED FOR PROFILES SHOWN.
WHERE CONT. GUTTER LENGTH EXCEEDS 40'-0", PROVIDE MANUFACTURER'S STANDARD EXPANSION JOINT.

** ALL COLORS TO BE SELECTED BY ARCHITECT FROM MANUFACTURER'S STANDARD COLORS



LARSON
• KARLE
ARCHITECTS

Warren
3 Farm Colony Drive • Warren, PA 16365
814 • 728 • 6510
Pittsburgh
1601 Marys Ave., Suite 206 • Pittsburgh, PA 15215
412 • 904 • 1553
Erie
1946 W. 26th St., Suite 38 • Erie, PA 16508
814 • 453 • 7507

50% PROGRESS

ADDENDUMS

No.	Date	Name



Project



NORTHSHORE BRANCH
2077 TOWN CENTER
BOULEVARD
KNOXVILLE, TN 37922
Title
BUILDING ELEVATIONS

Date

06/02/2025

Project Number

25007

Drawn By

GMD

Sheet Number

A202

ARCHITECTURE • INTERIOR DESIGN
LANDSCAPE ARCHITECTURE • SPACE PLANNING
© All Rights Reserved Larson Karle Architects

Revised: 7/28/2025
MPC PLANNING FILE # 8-E-25-SU



ORNL Federal Credit Union
Northshore Branch
Project #25007

Exterior Concept



**LARSON
• KARLE
ARCHITECTS**



ORNL Federal Credit Union
Northshore Branch
Project #25007

Exterior Concept



**LARSON
• KARLE
ARCHITECTS**



ORNL Federal Credit Union
Northshore Branch
Project #25007

Exterior Concept



**LARSON
• KARLE
ARCHITECTS**