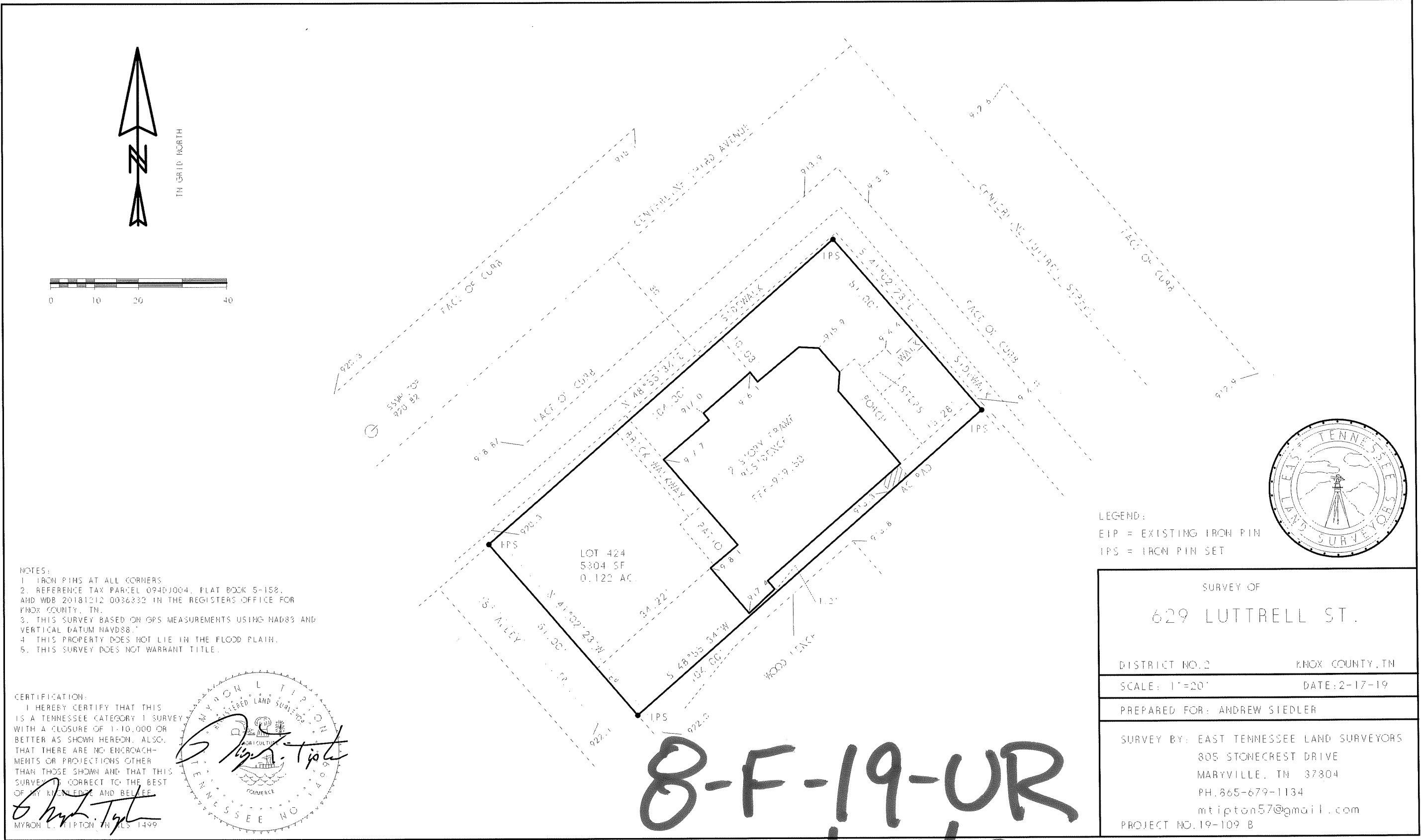


SURVEY OF 629 LUTTRELL STREET [2018]
East Tennessee Land Surveyors







EAST ELEVATION, Luttrell Street | 1/8" = 1'

The front of the house facing Luttrell. Proposed work here deals primarily with ameliorating non-approved work performed by the previous owners. The front door is replaced with a half-lite wood door, sidelights, and solid transom panel. The front stairs are repaired and new curb edges added. As no evidence exists of the historic porch columns and balustrades the proposed elements are understated contemporary versions of Queen Anne flat sawn balustrades.

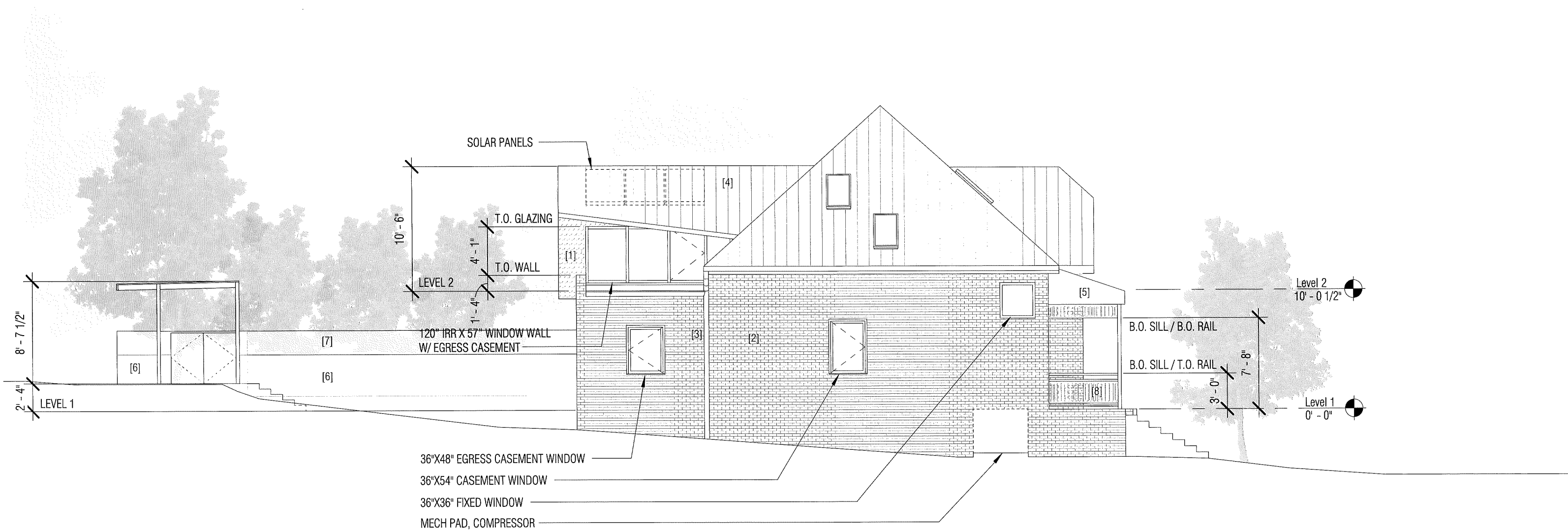
- [1] PAINTED SHINGLE, ROUNDED
- [2] PAINTED BRICK
- [3] METAL DOWNSPOUT
- [4] METAL ROOFING
- [5] CONCRETE RETAINING WALL
- [6] WOOD FENCE, SEMI-OPAQUE
- [7] WOOD FENCE, SEMI-TRANSPARENT
- [8] FLAT-CUT RAIL, PAINTED



NORTH ELEVATION, 3rd Avenue | 1/8" = 1'

A prominent, street-facing elevation. No significant changes are proposed here – merely painting the non-historic brick, new gutters and downspouts, and repairing or replacing existing windows in kind.

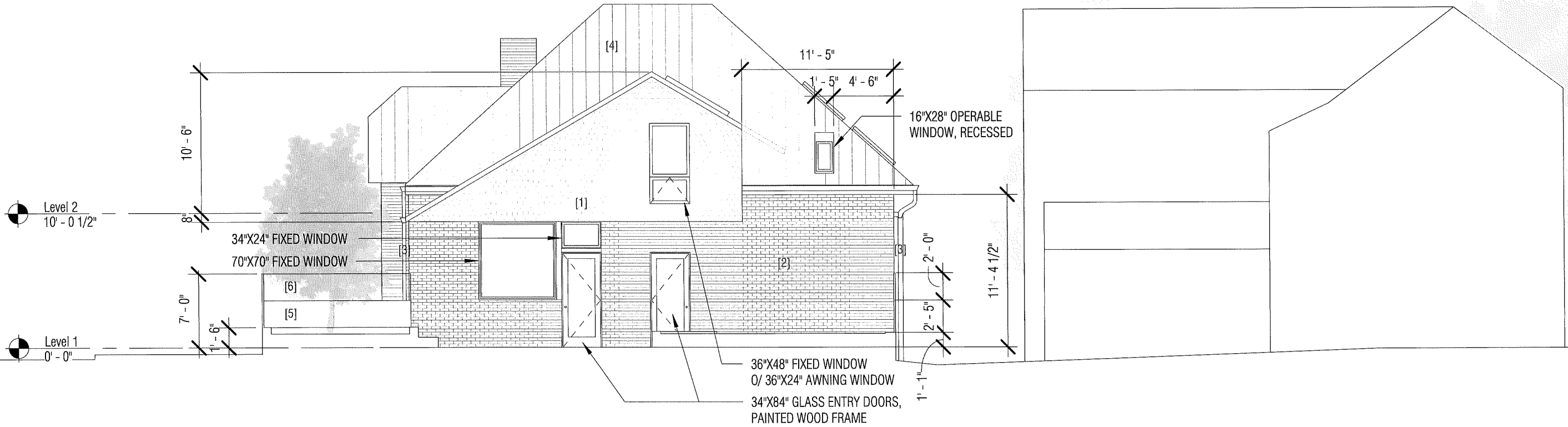
- [1] PAINTED SHINGLE, ROUNDED
- [2] PAINTED BRICK
- [3] METAL DOWNSPOUT
- [4] METAL ROOFING
- [5] CONCRETE RETAINING WALL
- [6] WOOD FENCE, SEMI-OPAQUE
- [7] WOOD FENCE, SEMI-TRANSPARENT
- [8] FLAT-CUT RAIL, PAINTED



SOUTH ELEVATION | 1/8" = 1'

This is the least visible façade. As such, the proposal strives to group as many of the new interventions as possible here including all new egress windows, space for future photovoltaics, a skylight relocated from a more prominent elevation, and the small flat roof. Additionally, daylighting, vision, and ventilation windows are introduced here. Proximity to the property line prohibits either extensive additions or openings along this wall.

- [1] PAINTED SHINGLE
- [2] PAINTED BRICK
- [3] METAL DOWNSPOUT
- [4] METAL ROOFING
- [5] WOOD PANEL, PAINTED
- [6] WOOD FENCE, SEMI-OPAQUE
- [7] WOOD FENCE, SEMI-TRANSPARENT
- [8] FLAT-CUT RAIL, PAINTED



WEST ELEVATION | 1/8" = 1'

The rear facing elevation, only the south elevation is less visible. In accordance with guidelines, every effort is made to have any additions and changes in fenestration occur here. Accessible entries into the kitchen and guest suite are here along with a reshaped partial gable. The partial gable is tied to the house's other gables with rounded shingle siding. A large fixed window helps denote the new work as contemporary, as is required. It is not anticipated that the small recessed window will be visible from the public way other than along the alley.

- [1] PAINTED SHINGLE, ROUNDED
- [2] PAINTED BRICK
- [3] METAL DOWNSPOUT
- [4] METAL ROOFING
- [5] WOOD FENCE, SEMI-OPAQUE
- [6] WOOD FENCE, SEMI-TRANSPARENT