

**WEST ELEVATION**

SCALE: 1/8" = 1'-0"

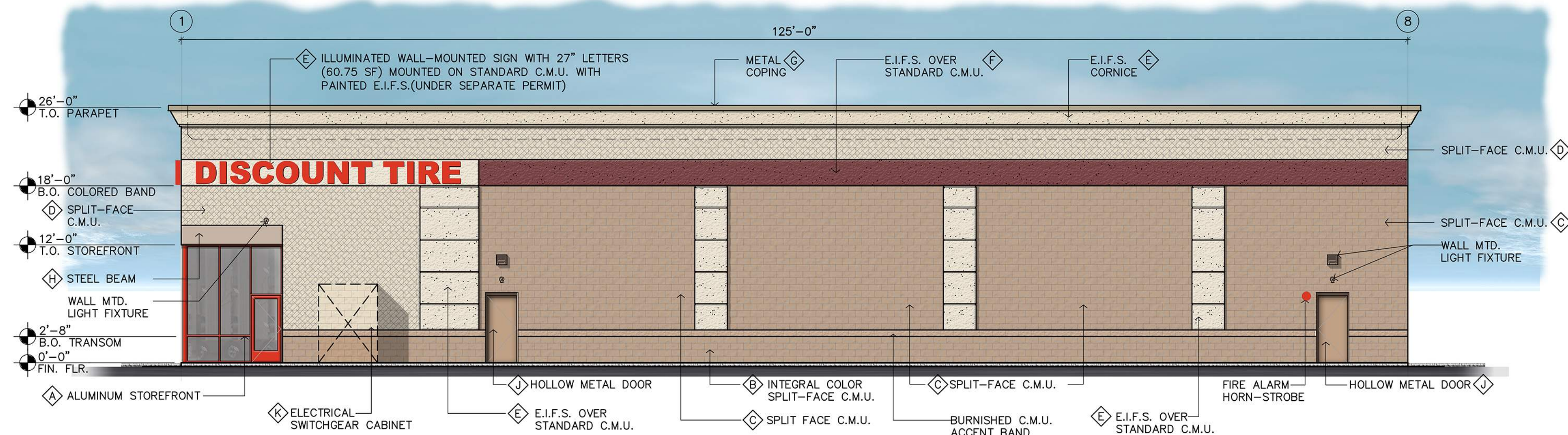


**EAST ELEVATION ( SAM WALTON WAY )**

SCALE: 1/8" = 1'-0"

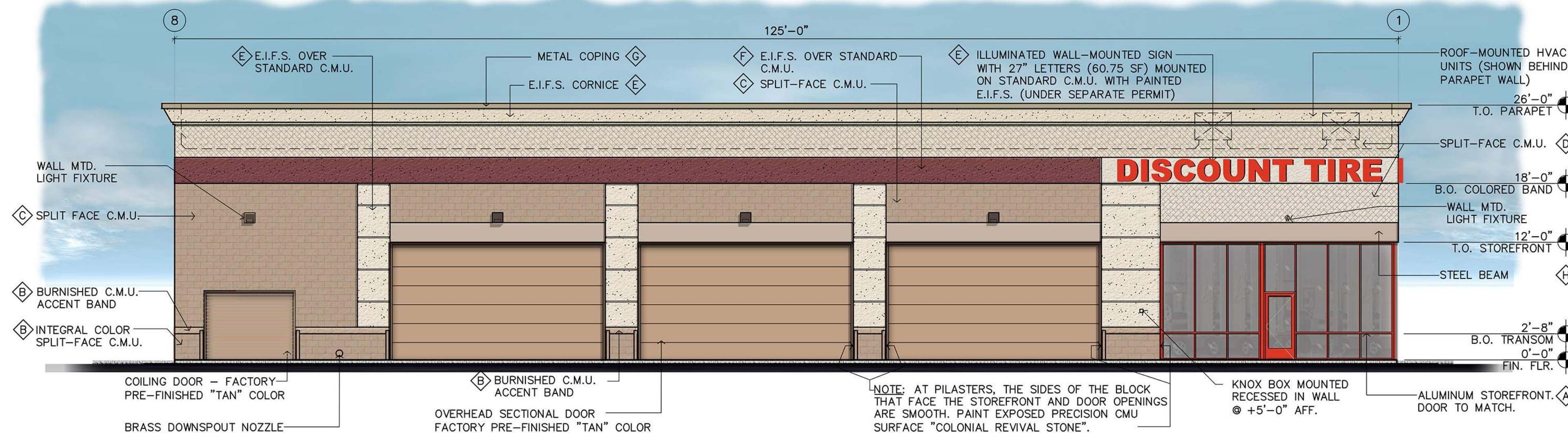
## FINISH LEGEND

- Ⓐ MANUFACTURER'S STANDARD COLOR TO MATCH "BANNER RED"
- Ⓑ INTEGRAL COLOR C.M.U. (SPLIT-FACE OR BURNISHED AS NOTED) COLOR TO MATCH "COLONIAL REVIVAL STONE"
- Ⓒ GRAY SPLIT-FACE CMU - PAINTED SHERWIN WILLIAMS SW#2827 "COLONIAL REVIVAL STONE"
- Ⓓ GRAY SPLIT-FACE CMU - PAINT SHERWIN WILLIAMS SW#6119 "ANTIQUE WHITE"
- Ⓔ E.I.F.S. - PAINTED TO MATCH SHERWIN WILLIAMS SW#6119 "ANTIQUE WHITE"
- Ⓕ E.I.F.S. BAND PAINT SHERWIN WILLIAMS SW#7585 "SUNDRIED TOMATO"
- Ⓖ METAL COPING - FACTORY PAINTED / INTEGRAL COLOR TO MATCH "COLONIAL REVIVAL STONE"
- Ⓗ STEEL / E.I.F.S. - PAINTED TO MATCH SHERWIN WILLIAMS SW#2827 "COLONIAL REVIVAL STONE"
- Ⓘ STEEL BOLLARDS - PAINTED TO MATCH "COLONIAL REVIVAL STONE"
- Ⓙ HOLLOW METAL DOORS - PAINTED TO MATCH "COLONIAL REVIVAL STONE"
- Ⓚ ELECTRICAL SWITCHGEAR CABINET - PAINTED TO MATCH "COLONIAL REVIVAL STONE"



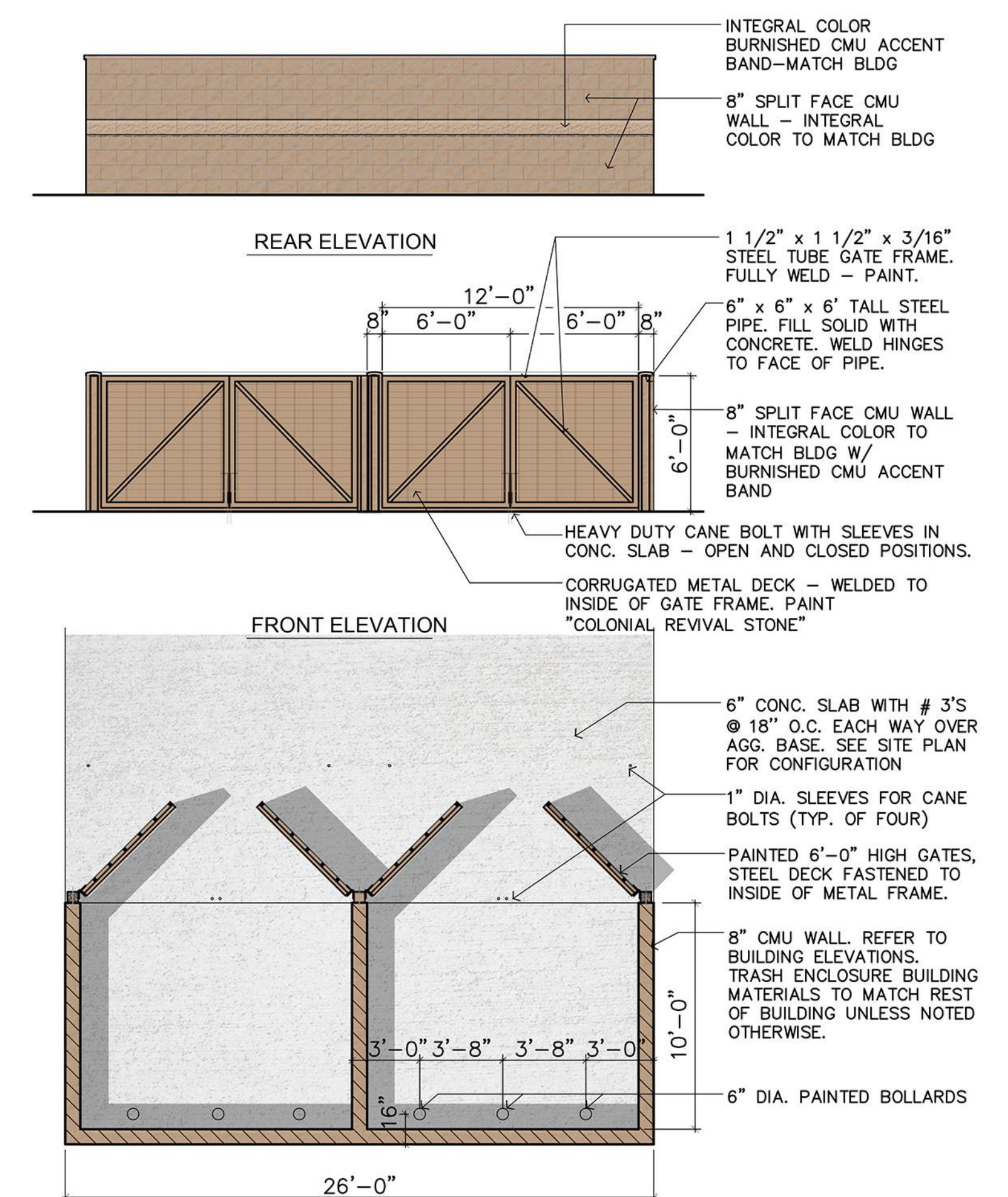
**NORTH ELEVATION**

SCALE: 1/8" = 1'-0"



**SOUTH ELEVATION**

SCALE: 1/8" = 1'-0"



**TRASH ENCLOSURE PLAN / ELEVATIONS**

3/16" = 1'-0"

9-C-20-UR  
7/24/2020

**REV:**  
**DATE: 01.30.20**  
**JOB # A.2001103**

**ALT - 1R**

**DISCOUNT  
TIRE**

THIS PLAN IS PROPERTY OF PLUMP GROUP ARCHITECTURE & ENGINEERING. THIS DRAWING IS LOANED WITHOUT OTHER CONSIDERATION THAN THE AGREEMENT AND CONDITION THAT IT IS NOT TO BE REPRODUCED, COPIED, OR OTHERWISE DISPOSED OF, DIRECTLY OR INDIRECTLY, AND IS NOT TO BE USED IN WHOLE OR IN PART TO ASSIST IN MAKING OR TO FURNISH ANY INFORMATION FOR THE MAKING OF DRAWINGS, PRINTS, APPARATUS OR PARTS THEREOF. THE ACCEPTANCE OF THIS DRAWING WILL BE CONSTRUED AS AN ACCEPTANCE OF THE FOREGOING CONDITIONS.

## CONCEPTUAL COLORED ELEVATIONS

**7550 NORRIS FWY  
KNOXVILLE, TN 37938**



**PLUMP ENGINEERING INC.**  
CONSULTING ENGINEERS  
STRUCTURAL, MECHANICAL, PLUMBING,  
ELECTRICAL, CIVIL, SURVEYING,  
ARCHITECTURAL  
914 E. KATELLA AVENUE, ANAHEIM, CA 92805  
P (714) 385-1835 F (714) 385-1834  
www.plumpgroup.com

**Sheet No.**

**A.3**



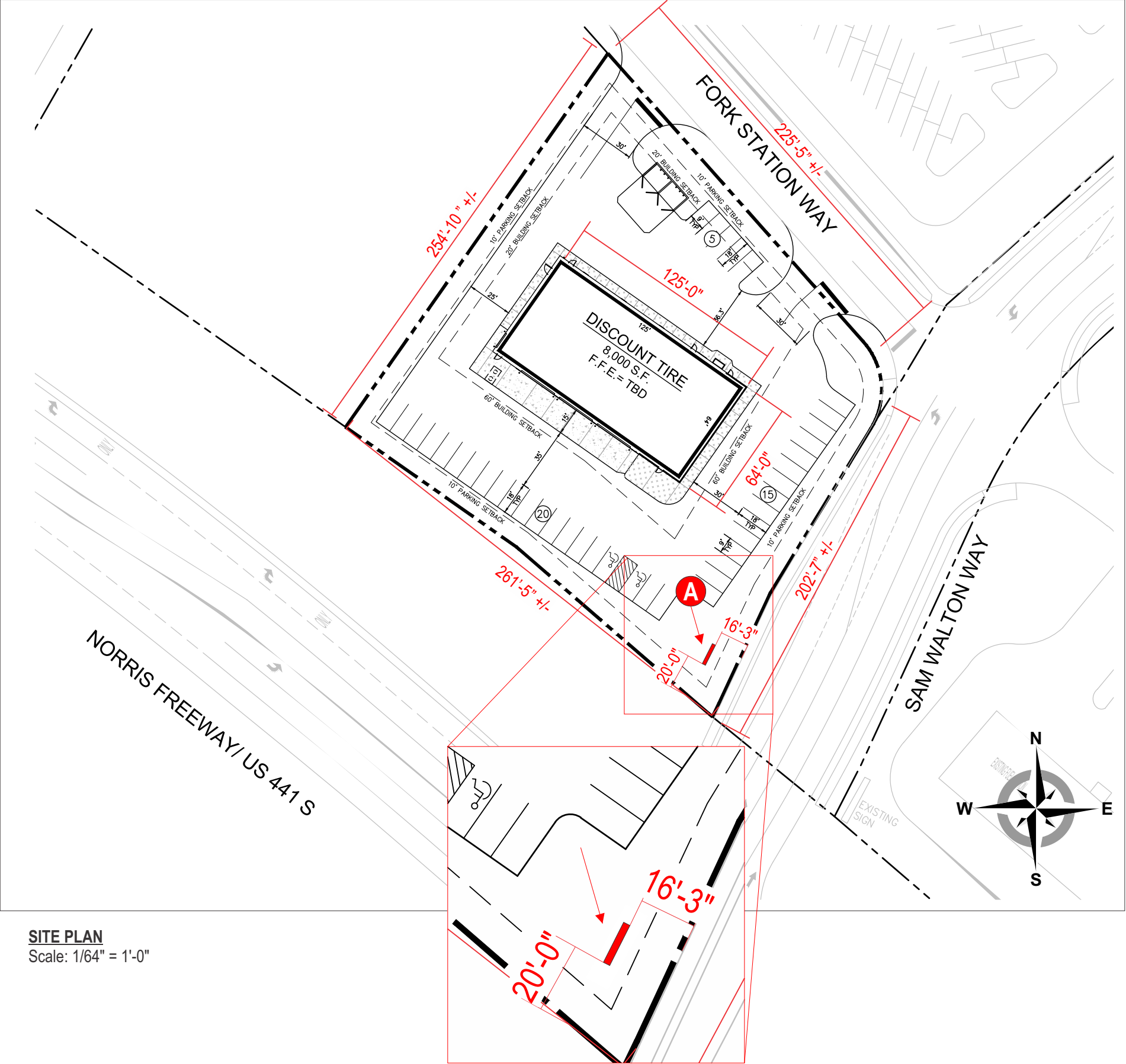
# DISCOUNT TIRE

PROJECT SITE:

STORE TNK 12166  
7550 NORRIS FWY  
KNOXVILLE, TN 37928

===== SIGN PACKAGE =====

9-C-20-UR  
7/24/2020

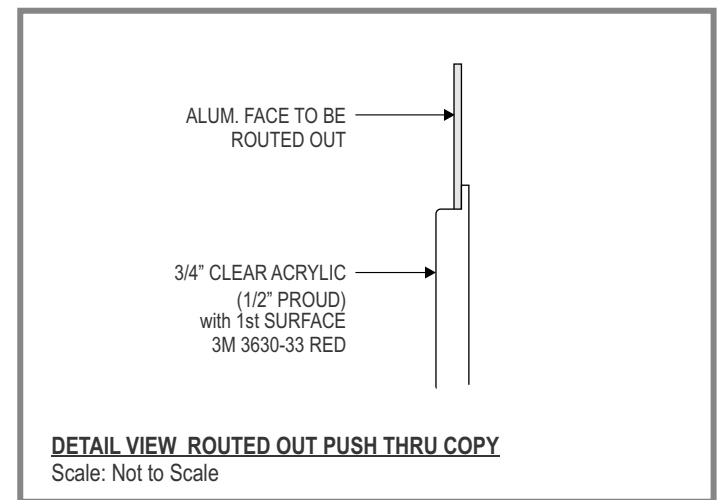
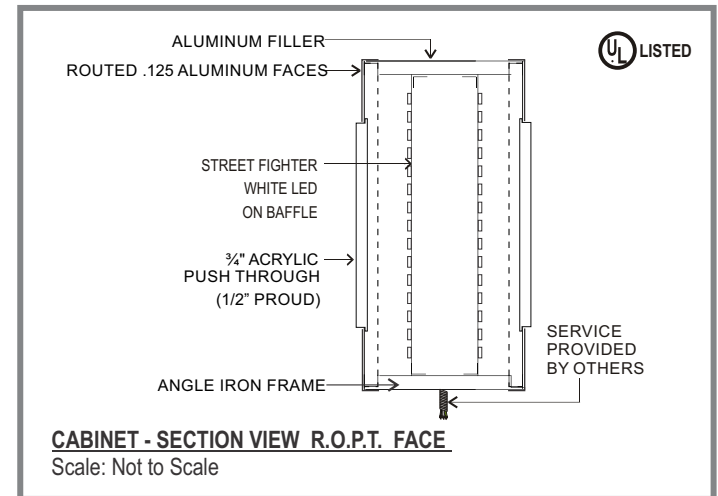
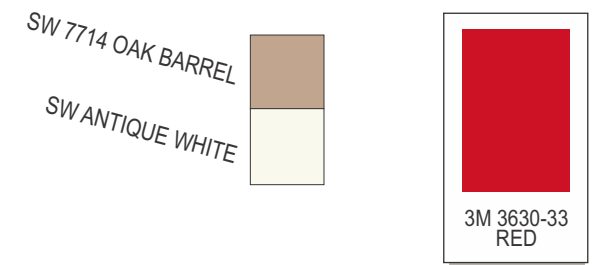
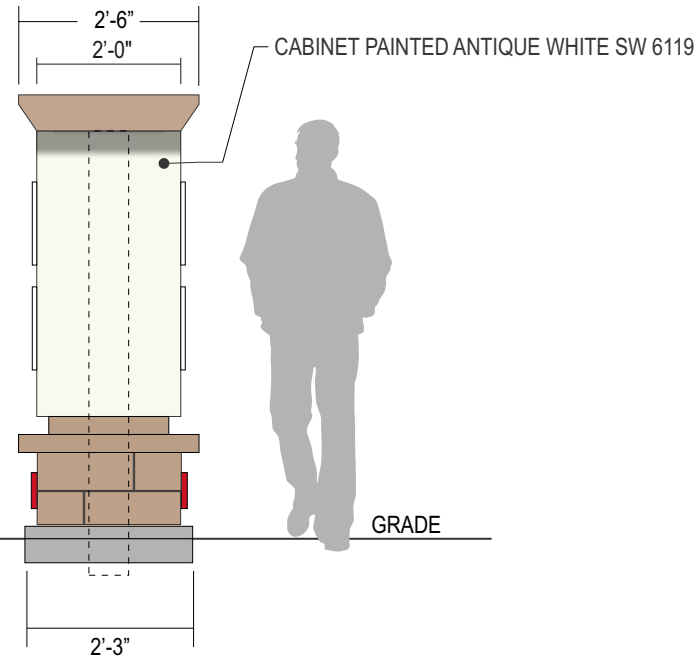
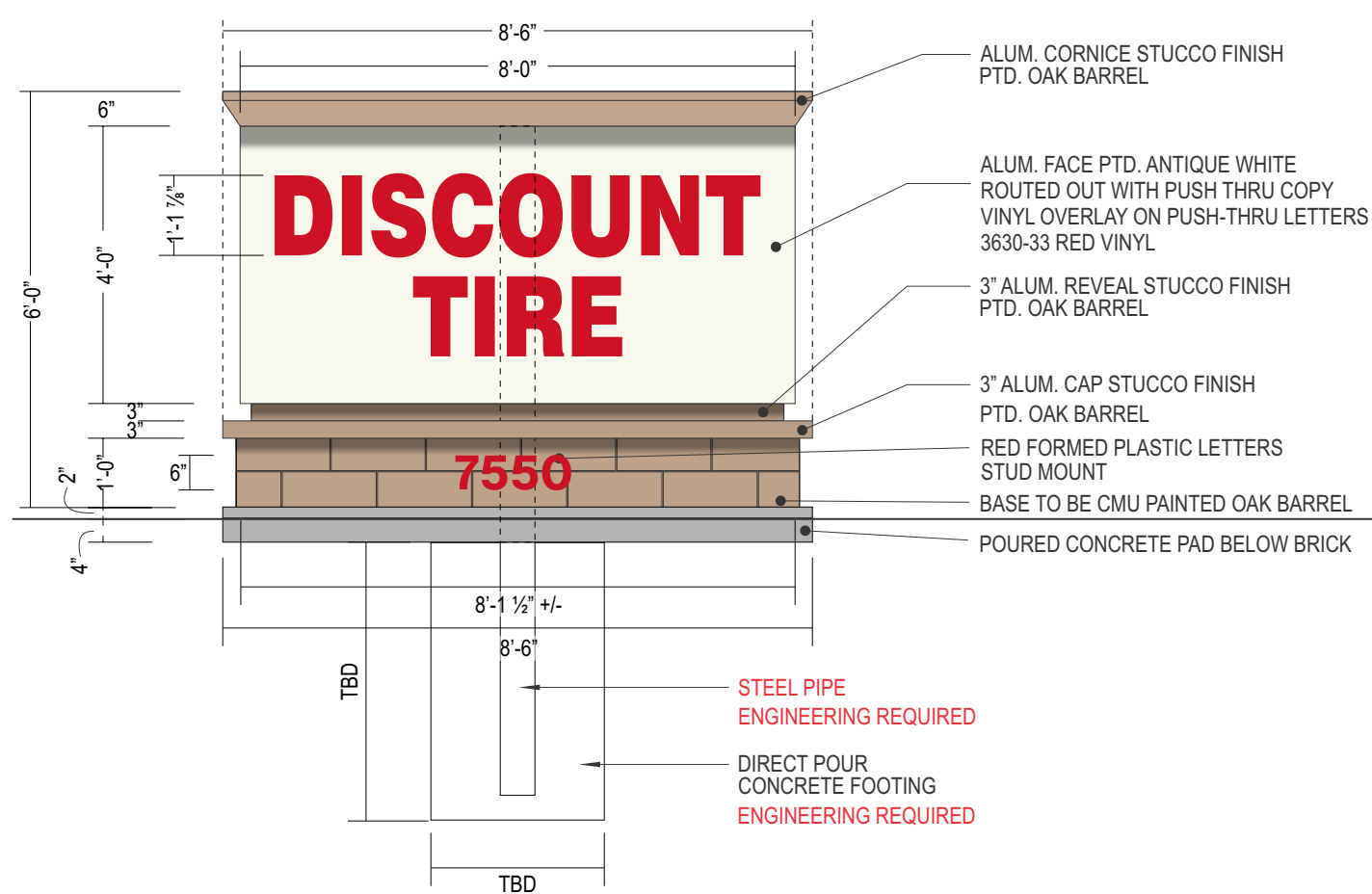


**SITE PLAN**  
Scale: 1/64" = 1'-0"



**AERIAL VIEW**  
Scale: Not to Scale

9-C-20-UR  
7/24/2020



4' X 8' X 6' - RPT - CMU - DT

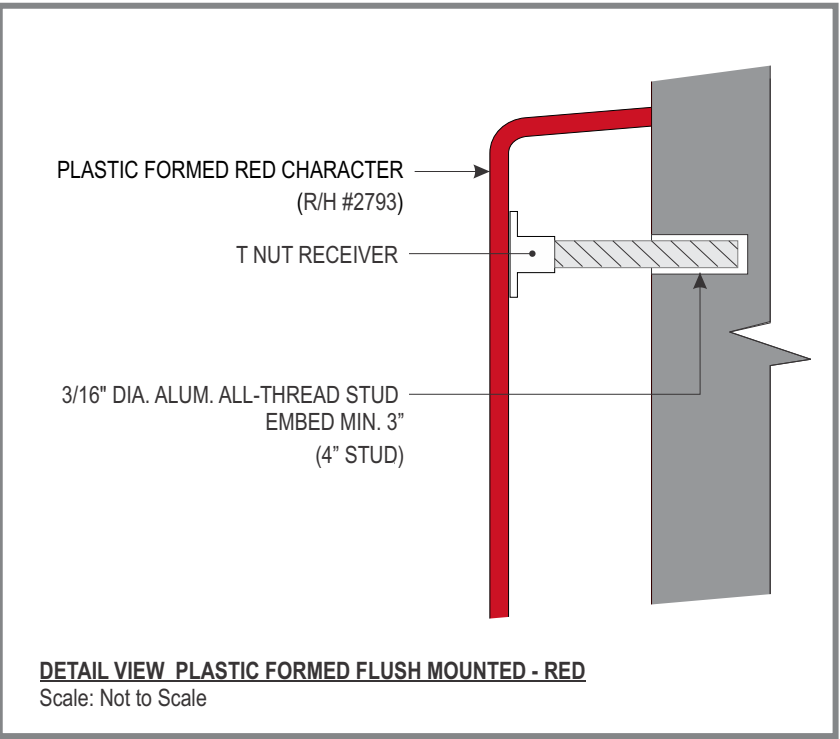
D/F MONUMENT SIGN - 32 SQ. FT. (Face of Sign)  
Scale: 3/8" = 1'-0"

- MANUFACTURE AND INSTALL ONE (1) NEW D/F ILLUMINATED MONUMENT SIGN

**SURVEY NOTE:**  
VERIFICATION REQUIRED PRIOR TO  
MANUFACTURING.

9-C-20-UR  
7/24/2020

6" 7550



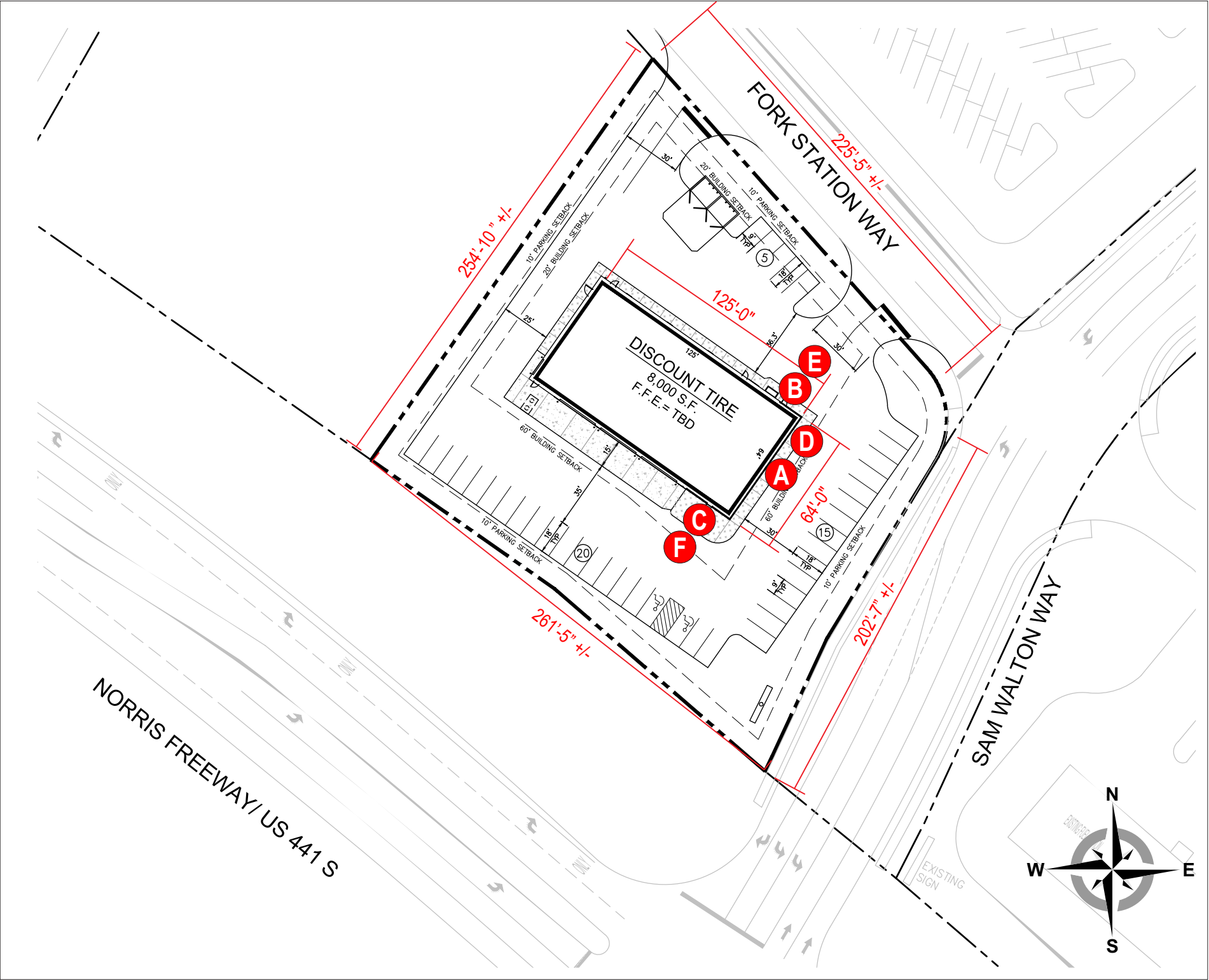
NON-ILLUMINATED MONUMENT/PYLON BASE NUMBERS - RED

Scale: 1 1/2" = 1' -0"

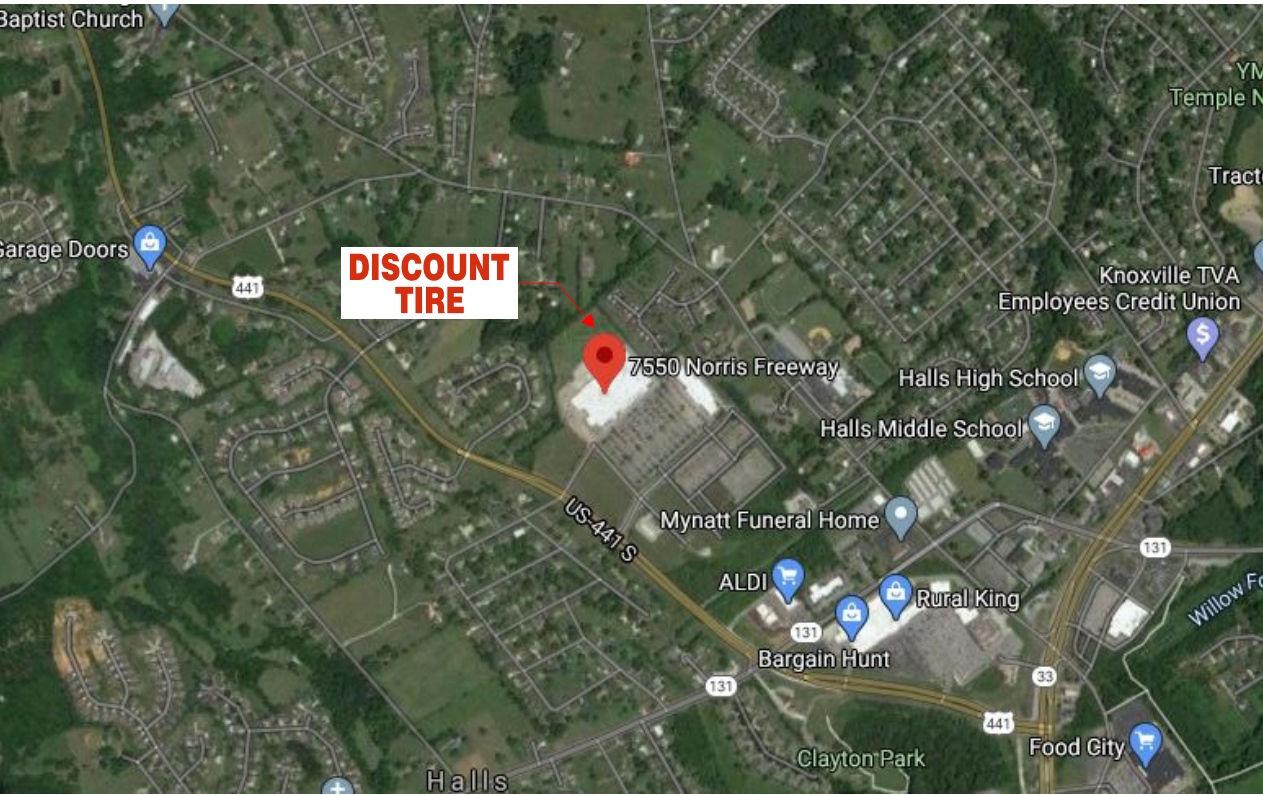
- PROVIDE AND INSTALL TWO (2) SETS OF PLASTIC FORMED ADDRESS NUMBERS
- RED R/H #2793
- HELVETICA FONT
- STUD MOUNTED FLUSH ON BASE OF D/F PYLON

9-C-20-UR  
7/24/2020





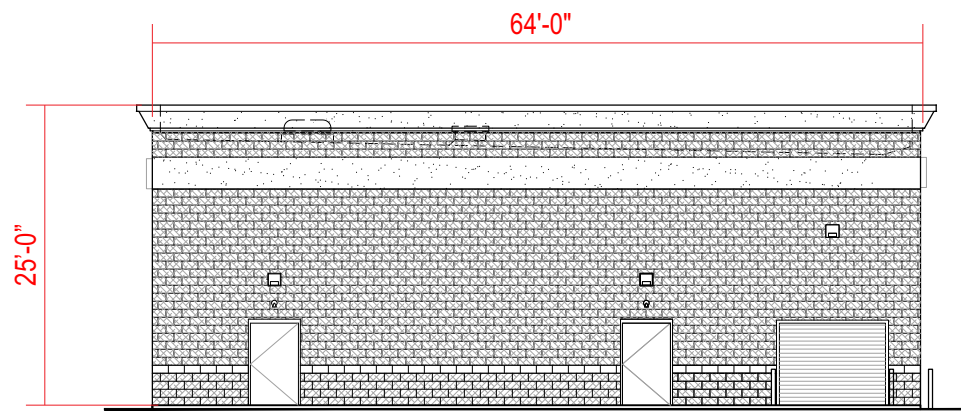
**SITE PLAN**  
Scale: 1/64" = 1'-0"



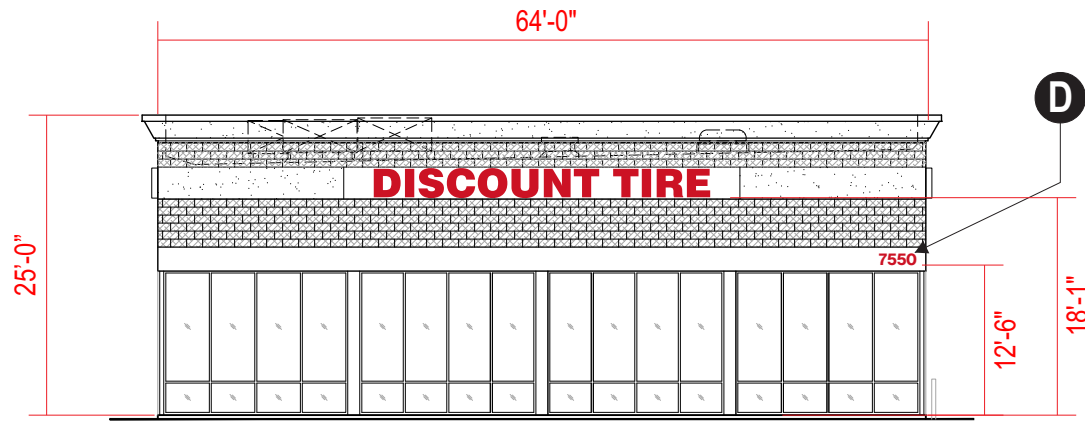
**AERIAL VIEW**  
Scale: Not to Scale

9-C-20-UR  
7/24/2020

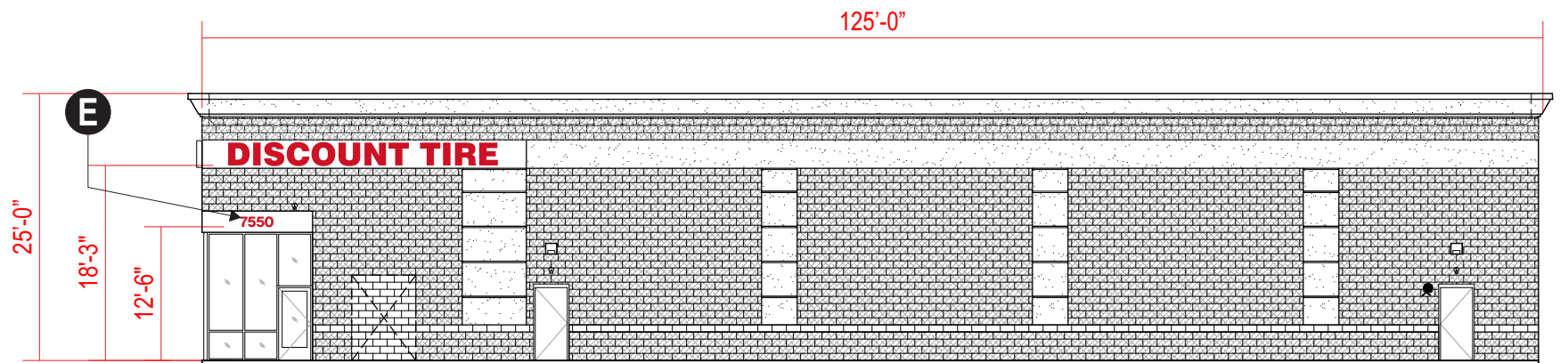




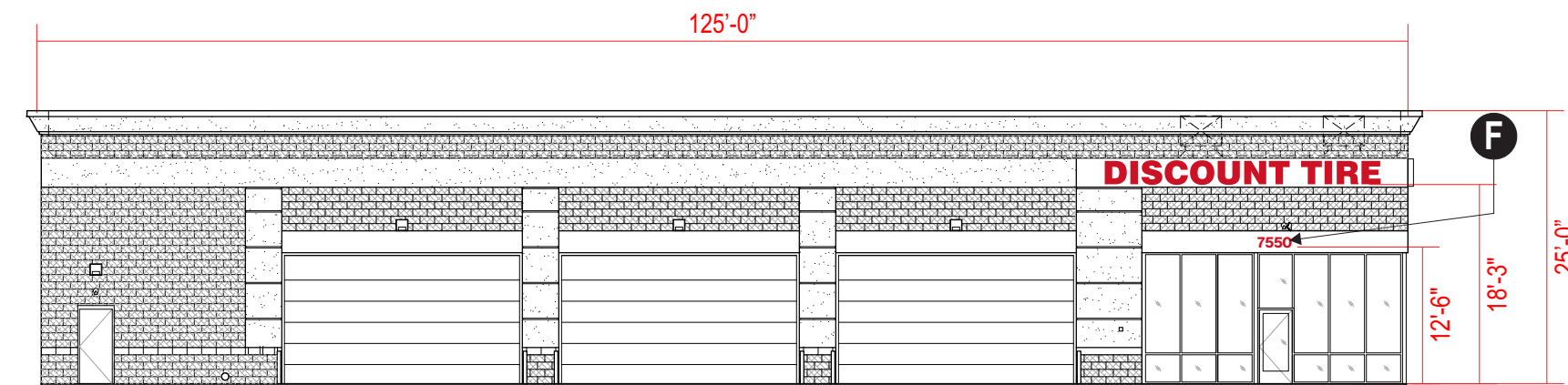
**WEST ELEVATION**  
Scale: 1/16" = 1'-0"



**A 30" EAST ELEVATION**  
Scale: 1/16" = 1'-0"



**B 27" NORTH ELEVATION**  
Scale: 1/16" = 1'-0"



**C 27" SOUTH ELEVATION**  
Scale: 1/16" = 1'-0"

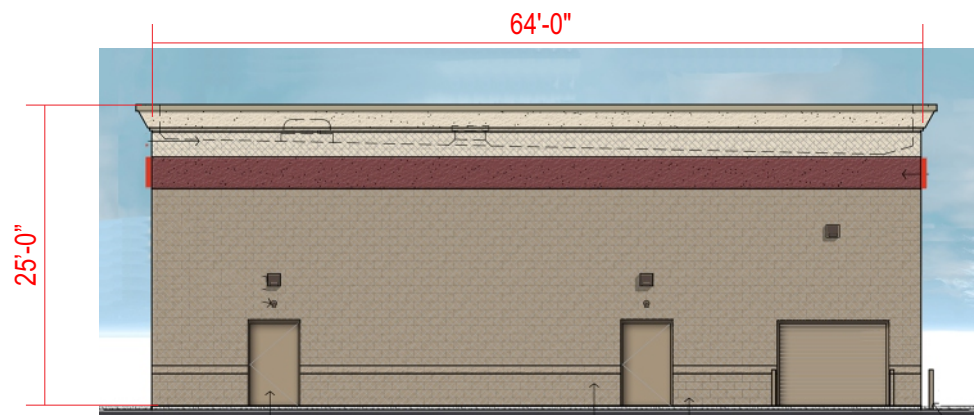
- BANNER RED
- SW 6119 ANTIQUE WHITE
- SW 7585 SUNDRIED TOMATO
- COLONIAL REVIVAL STONE

**FINISH LEGEND**

- MANUFACTURER'S STANDARD COLOR TO MATCH "BANNER RED"
- INTEGRAL COLOR C.M.U. (SPLIT-FACE OR BURNISHED AS NOTED) COLOR TO MATCH "COLONIAL REVIVAL STONE"
- GRAY SPLIT-FACE CMU - PAINTED SHERWIN WILLIAMS SW#2827 "COLONIAL REVIVAL STONE"
- GRAY SPLIT-FACE CMU- PAINT SHERWIN WILLIAMS SW#6119 "ANTIQUE WHITE"
- E.I.F.S. - PAINTED TO MATCH SHERWIN WILLIAMS SW#6119 "ANTIQUE WHITE"
- E.I.F.S. BAND PAINT SHERWIN WILLIAMS SW#7585 "SUNDRIED TOMATO"
- METAL COPING - FACTORY PAINTED / INTEGRAL COLOR TO MATCH "COLONIAL REVIVAL STONE"
- STEEL/ E.I.F.S. - PAINTED TO MATCH SHERWIN WILLIAMS SW#2827 "COLONIAL REVIVAL STONE"
- STEEL BOLLARDS - PAINTED TO MATCH "COLONIAL REVIVAL STONE"
- HOLLOW METAL DOORS - PAINTED TO MATCH "COLONIAL REVIVAL STONE"
- ELECTRICAL SWITCHGEAR CABINET - PAINTED TO MATCH "COLONIAL REVIVAL STONE"

9-C-20-UR  
7/24/2020

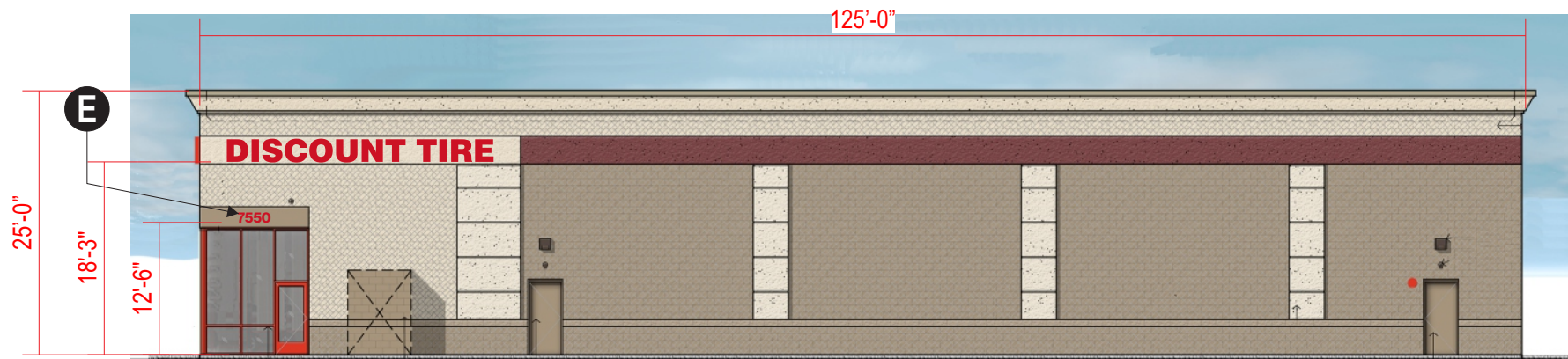




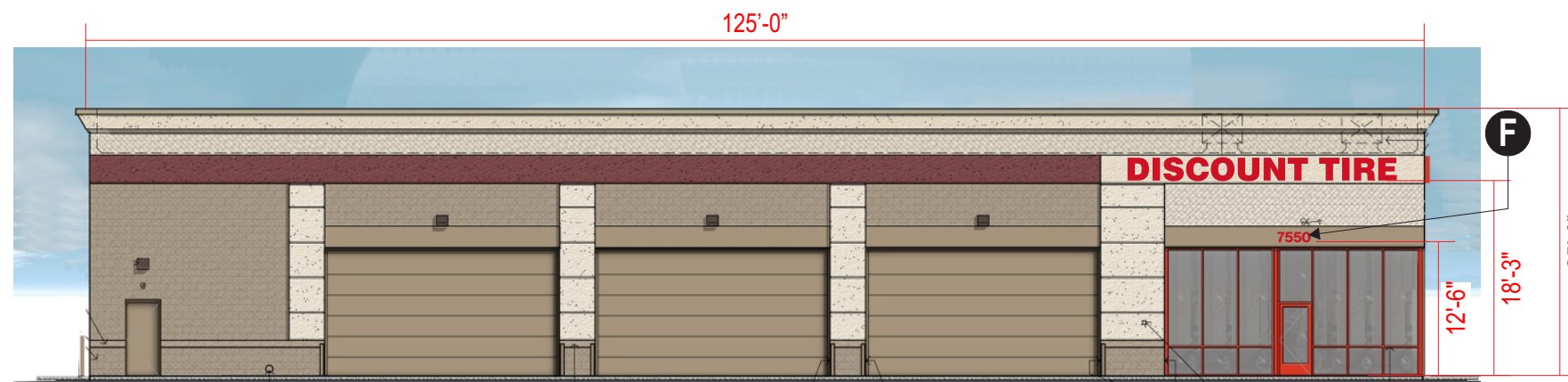
**WEST ELEVATION**  
Scale: 1/16" = 1'-0"



**A 30" EAST ELEVATION**  
Scale: 1/16" = 1'-0"



**B 27" NORTH ELEVATION**  
Scale: 1/16" = 1'-0"



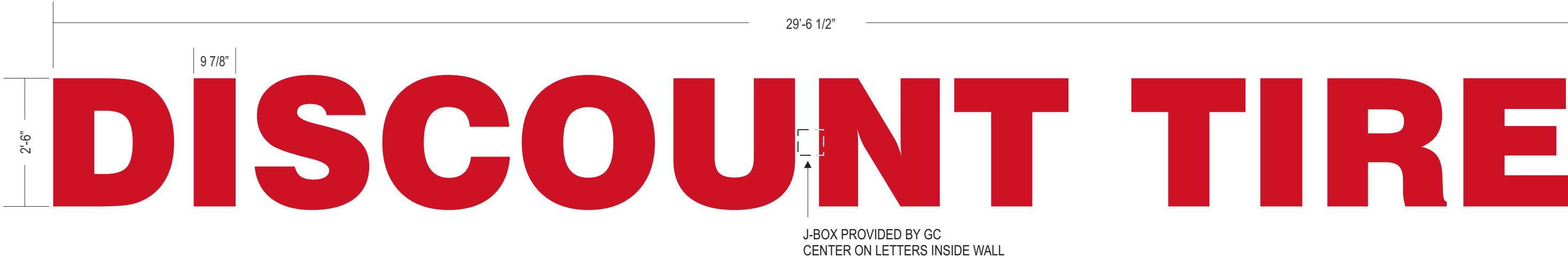
**C 27" SOUTH ELEVATION**  
Scale: 1/16" = 1'-0"

BANNER RED  
SW 6119 ANTIQUE WHITE  
SW 7585 SUNDRIED TOMATO  
COLONIAL REVIVAL STONE

#### FINISH LEGEND

- MANUFACTURER'S STANDARD COLOR TO MATCH "BANNER RED"
- INTEGRAL COLOR C.M.U. (SPLIT-FACE OR BURNISHED AS NOTED) COLOR TO MATCH "COLONIAL REVIVAL STONE"
- GRAY SPLIT-FACE CMU - PAINTED SHERWIN WILLIAMS SW#2827 "COLONIAL REVIVAL STONE"
- GRAY SPLIT-FACE CMU- PAINT SHERWIN WILLIAMS SW#6119 "ANTIQUE WHITE"
- E.I.F.S. - PAINTED TO MATCH SHERWIN WILLIAMS SW#6119 "ANTIQUE WHITE"
- E.I.F.S. BAND PAINT SHERWIN WILLIAMS SW#7585 "SUNDRIED TOMATO"
- METAL COPING - FACTORY PAINTED / INTEGRAL COLOR TO MATCH "COLONIAL REVIVAL STONE"
- STEEL/ E.I.F.S. - PAINTED TO MATCH SHERWIN WILLIAMS SW#2827 "COLONIAL REVIVAL STONE"
- STEEL BOLLARDS - PAINTED TO MATCH "COLONIAL REVIVAL STONE"
- HOLLOW METAL DOORS - PAINTED TO MATCH "COLONIAL REVIVAL STONE"
- ELECTRICAL SWITCHGEAR CABINET - PAINTED TO MATCH "COLONIAL REVIVAL STONE"



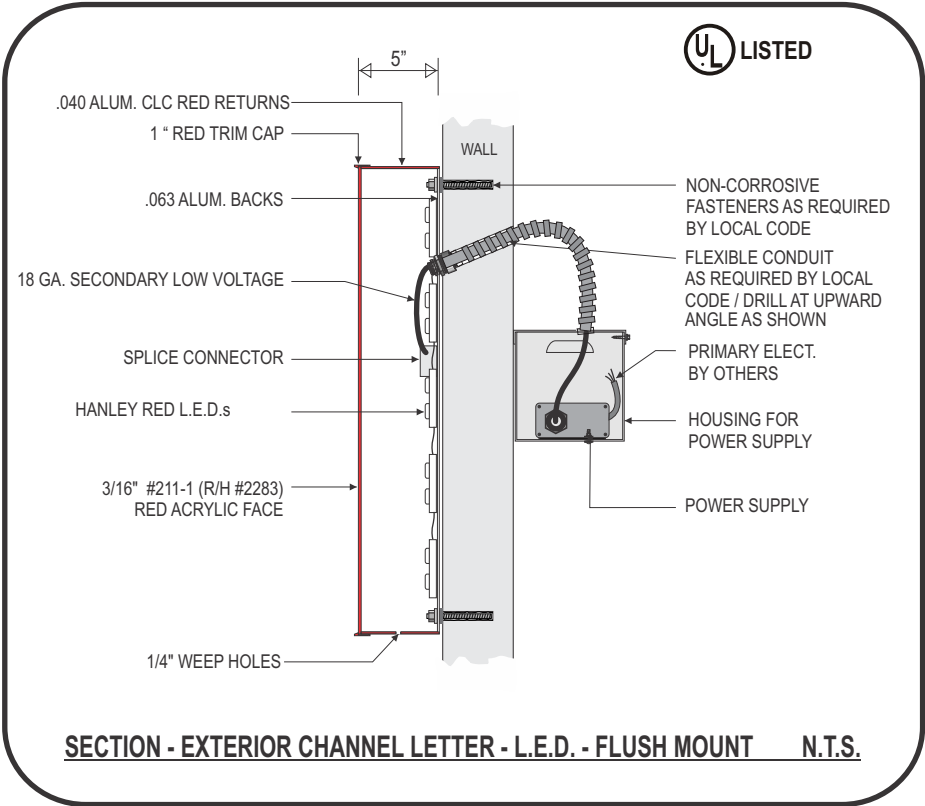


**A 30" FRONT VIEW OF ILLUMINATED CHANNEL LETTERS - FLUSH MOUNT - "DISCOUNT TIRE" - 73.85 SQ. FEET**  
Scale: 1/2" = 1' -0"

- MANUFACTURE AND INSTALL ONE (1) NEW CHANNEL LETTER SET

**GENERAL SPECIFICATIONS**

- ACRYLIC FACE LIT CHANNEL LETTERS
  - .063 ALUM. BACKS W/.040 ALUM. RETURNS (BACKS TO HAVE 3 HOLES FOR ELECTRICAL PENETRATION OPTIONS - BOTTOM, MIDDLE, TOP)
  - 1" "JEWELITE" RED TRIM CAP
  - 5" PRE-FINISHED CLC RED RETURNS
  - 3/16" #211-1 (R/H 2283) RED ACRYLIC FACE
- INTERNAL ILLUMINATION WITH RED HANLEY L.E.D.s
- 12VDC SECONDARY WIRING
- REMOTE 120 VAC TO 12VDC LED POWER SUPPLIES
- 120 VOLT PRIMARY TO SIGN LOCATIONS BY OTHERS

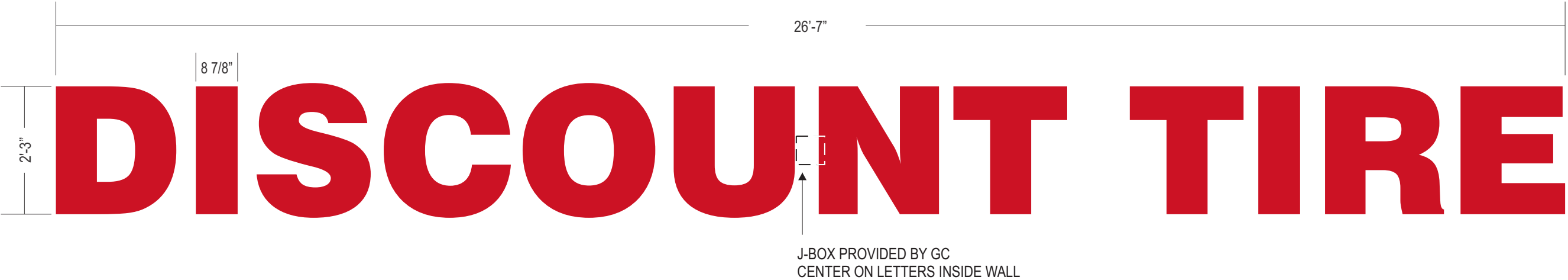


**INSTALLATION NOTES:**  
WHEN INSTALLING LETTERS, USE CLEAR SILICONE AROUND SECONDARY AND WALL PENETRATIONS. RUN A BEAD OF SILICONE ACROSS THE TOPS OF ALL LETTERS, IN ORDER TO PREVENT LEAKS.

DRILL AT UPWARD ANGLE INTO WALL FOR CONDUIT (AS SHOWN IN SECTION)

9-C-20-UR  
7/24/2020



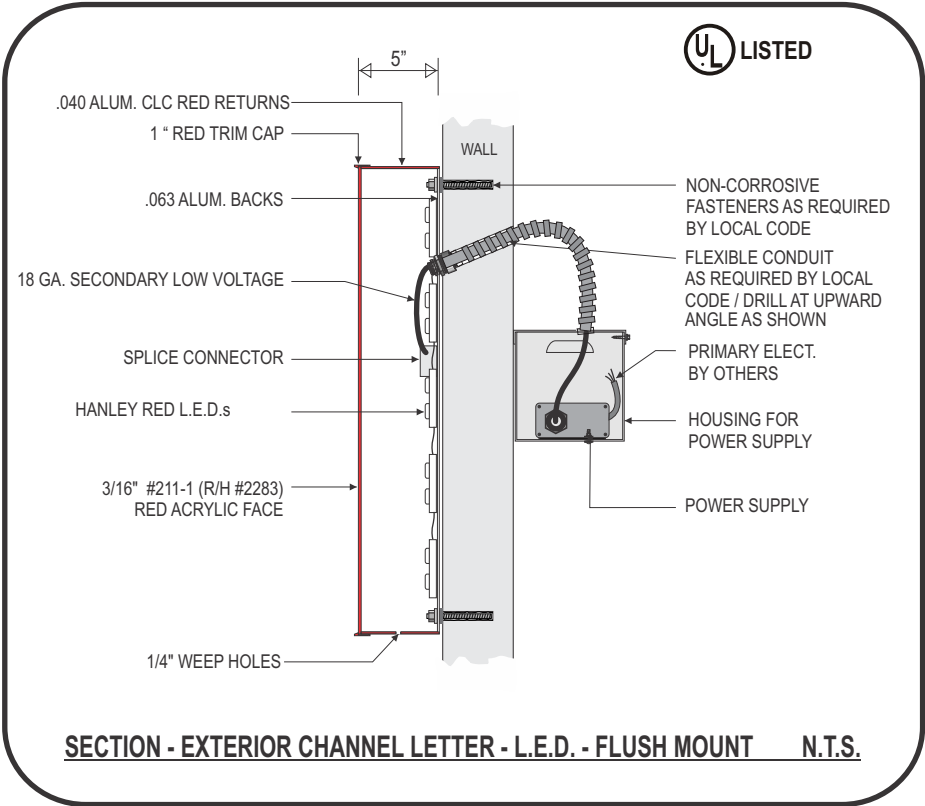


**B C 27"** FRONT VIEW OF ILLUMINATED CHANNEL LETTERS - FLUSH MOUNT - “DISCOUNT TIRE” - 59.81 SQ. FEET  
Scale: 1/2" = 1' -0"

- MANUFACTURE AND INSTALL TWO (2) NEW CHANNEL LETTER SETS

**GENERAL SPECIFICATIONS**

- ACRYLIC FACE LIT CHANNEL LETTERS
- .063 ALUM. BACKS W/.040 ALUM. RETURNS  
(BACKS TO HAVE 3 HOLES FOR ELECTRICAL PENETRATION OPTIONS - BOTTOM, MIDDLE, TOP)
- 1" “JEWELITE” RED TRIM CAP
- 5" PRE-FINISHED CLC RED RETURNS
- 3/16" #211-1 (R/H 2283) RED ACRYLIC FACE
- INTERNAL ILLUMINATION WITH RED HANLEY L.E.D.s
- 12VDC SECONDARY WIRING
- REMOTE 120 VAC TO 12VDC LED POWER SUPPLIES
- 120 VOLT PRIMARY TO SIGN LOCATIONS BY OTHERS

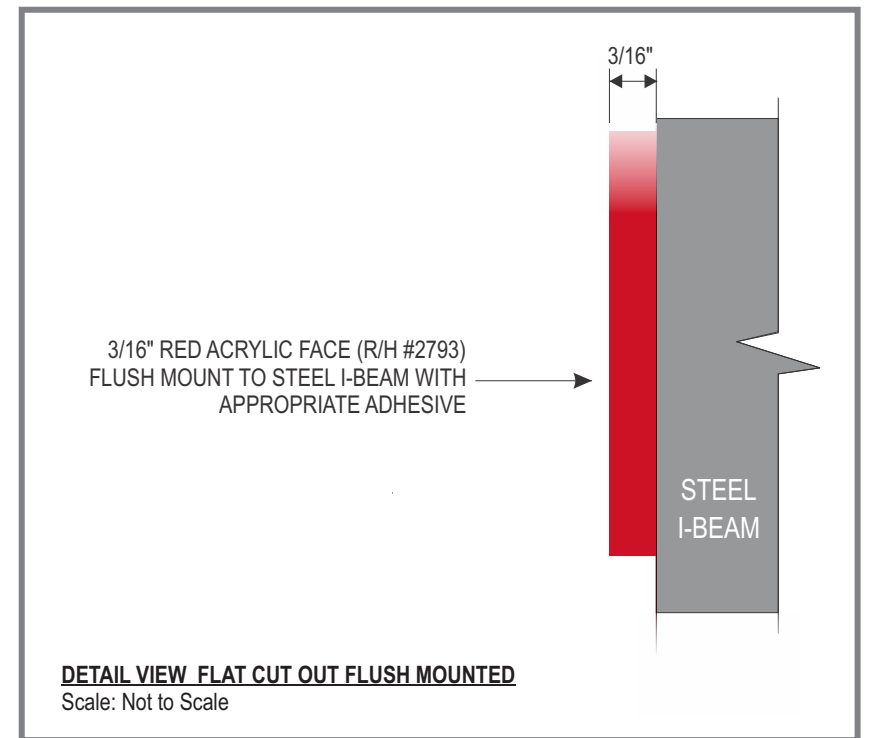


**INSTALLATION NOTES:**  
WHEN INSTALLING LETTERS, USE CLEAR SILICONE AROUND SECONDARY AND WALL PENETRATIONS. RUN A BEAD OF SILICONE ACROSS THE TOPS OF ALL LETTERS, IN ORDER TO PREVENT LEAKS.  
**DRILL AT UPWARD ANGLE INTO WALL FOR CONDUIT (AS SHOWN IN SECTION)**

9-C-20-UR  
7/24/2020



12" 7550



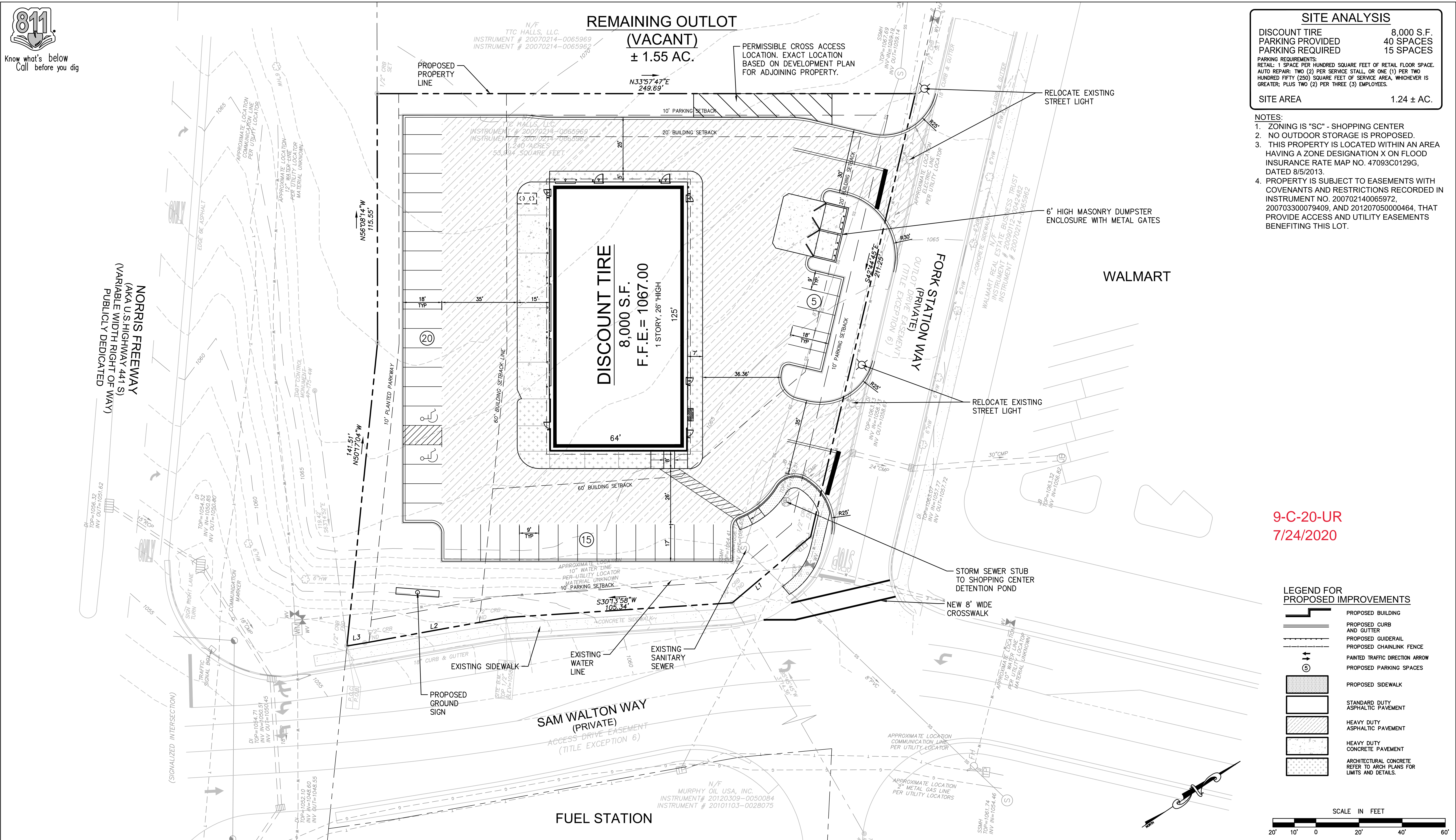
**DEF** **NON-ILLUMINATED BUILDING ADDRESS NUMBERS - RED**  
Scale: 1 1/2" = 1' -0"

- FABRICATE AND INSTALL THREE (3) SETS OF FLAT LASER CUT ACRYLIC ADDRESS NUMBERS
  - RED R/H #2793
  - HELVETICA FONT
- 
- FLUSH MOUNT TO STEEL I-BEAM WITH APPROPRIATE ADHESIVE

**NOTE:**  
**FIELD VERIFY THERE  
ARE NO OBSTRUCTIONS  
PRIOR TO INSTALLATION**

9-C-20-UR  
7/24/2020





SITE ANALYSIS	
DISCOUNT TIRE	8,000 S.F.
PARKING PROVIDED	40 SPACES
PARKING REQUIRED	15 SPACES
PARKING REQUIREMENTS: RETAIL: 1 SPACE PER HUNDRED SQUARE FEET OF RETAIL FLOOR SPACE. AUTO REPAIR: TWO (2) PER SERVICE STALL, OR ONE (1) PER TWO HUNDRED FIFTY (250) SQUARE FEET OF SERVICE AREA, WHICHEVER IS GREATER; PLUS TWO (2) PER THREE (3) EMPLOYEES.	
SITE AREA	1.24 ± AC.

- NOTES:
1. ZONING IS "SC" - SHOPPING CENTER
  2. NO OUTDOOR STORAGE IS PROPOSED.
  3. THIS PROPERTY IS LOCATED WITHIN AN AREA HAVING A ZONE DESIGNATION X ON FLOOD INSURANCE RATE MAP NO. 47093C0129G, DATED 8/5/2013.
  4. PROPERTY IS SUBJECT TO EASEMENTS WITH COVENANTS AND RESTRICTIONS RECORDED IN INSTRUMENT NO. 200702140065972, 200703300079409, AND 201207050000464, THAT PROVIDE ACCESS AND UTILITY EASEMENTS BENEFITING THIS LOT.

NO.	REVISION	DATE	CONSULTANT:	DEVELOPER:	DISCLAIMER:	DISCOUNT TIRE STORE NORRIS FREEWAY KNOXVILLE, TN 37928 PARCEL ID: 038CG005	STORE NUMBER: TNK 12166 BDC # 20-110 PROJECT MANAGER: HOLLY KEILMAN PROJECT CIVIL ENGINEER: KELLY WAGONER PH: (404) 567-5701 Ext 103 DRAWN BY: GDL	SHEET TITLE: USE ON REVIEW SITE PLAN	SHEET NUMBER: P-2
			BDG Buckel Design Group, LLC. 3471 DONAVILLE ST DULUTH, GA 30096 PHONE: 404-567-5701 FAX: 404-567-5703 WWW.BDGS.COM	DISCOUNT TIRE COMPANY 20225 N. SCOTTSDALE RD. SCOTTSDALE, AZ 85255 PH: 480-606-6000	THIS DRAWING IS AN INSTRUMENT OF SERVICE AND THE PROPERTY OF DISCOUNT TIRE COMPANY AND SHALL REMAIN THEIR PROPERTY. THE USE OF THIS DRAWING SHALL BE RESTRICTED TO THE ORIGINAL SITE FOR WHICH IT WAS PREPARED. PUBLICATION THEREOF IS EXPRESSLY LIMITED TO SUCH.			DATE: JULY 21, 2020 ISSUED FOR: CONCEPTUAL REVIEW	





Shrubs QU	Scientific Name	Common Name	Minimum Size	Spacing
82	Ilex cornuta 'Needlepoint'	Needlepoint Holly	3 Gal.	3' o.c.

9-C-20-UR  
7/24/2020





Know what's below  
Call before you dig

NORRIS FREEWAY  
(AKA U.S. HIGHWAY 441 S)  
(VARIABLE WIDTH RIGHT OF WAY)  
PUBLICLY DEDICATED

N/F  
TTC HALLS, LLC.  
INSTRUMENT # 20070214-0065969  
INSTRUMENT # 20070214-0065962

REMAINING OUTLOT  
(VACANT)  
± 1.55 AC.

N33°57'47"E  
249.69'

TTC HALLS, LLC.  
INSTRUMENT # 20070214-0065969  
INSTRUMENT # 20070214-0065962  
1.240 ACRES  
53,394 SQUARE FEET

DISCOUNT TIRE  
8,000 S.F.  
F.F.E. = 1067.00  
1 STORY, 26' HIGH

FORK STATION WAY  
(PRIVATE)  
OUTLOT DRIVE EASEMENT  
(TITLE EXCEPTION 6)

WALMART REAL ESTATE BUSINESS TRUST  
INSTRUMENT # 20090112-0042482  
INSTRUMENT # 20070214-0065962

#### SITE ANALYSIS

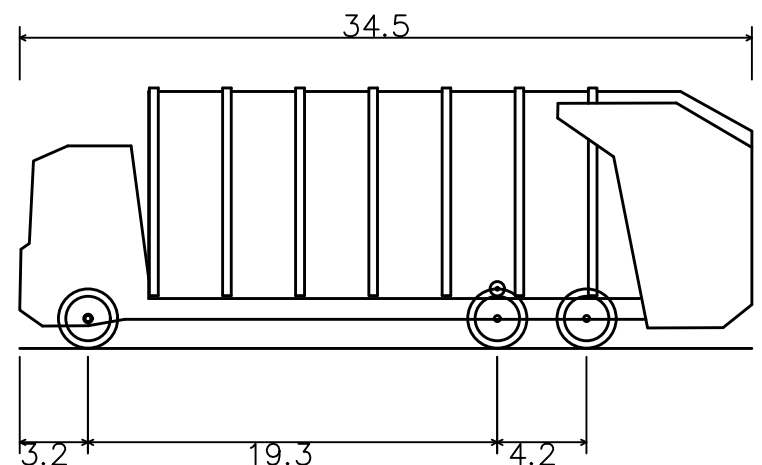
DISCOUNT TIRE 8,000 S.F.  
PARKING PROVIDED 40 SPACES  
PARKING REQUIRED 15 SPACES

PARKING REQUIREMENTS:  
RETAIL: 1 SPACE PER HUNDRED SQUARE FEET OF RETAIL FLOOR SPACE.  
AUTO REPAIR: TWO (2) PER SERVICE STALL, OR ONE (1) PER TWO  
HUNDRED FIFTY (250) SQUARE FEET OF SERVICE AREA, WHICHEVER IS  
GREATER; PLUS TWO (2) PER THREE (3) EMPLOYEES.

SITE AREA 1.24 ± AC.

#### NOTES:

1. ZONING IS "SC" - SHOPPING CENTER
2. NO OUTDOOR STORAGE IS PROPOSED.
3. THIS PROPERTY IS LOCATED WITHIN AN AREA  
HAVING A ZONE DESIGNATION X ON FLOOD  
INSURANCE RATE MAP NO. 47093C0129G,  
DATED 8/5/2013.
4. PROPERTY IS SUBJECT TO EASEMENTS WITH  
COVENANTS AND RESTRICTIONS RECORDED IN  
INSTRUMENT NO. 200702140065972,  
200703300079409, AND 201207050000464. THAT  
PROVIDE ACCESS AND UTILITY EASEMENTS  
BENEFITING THIS LOT.



9-C-20-UR  
7/24/2020

Mack Truck Front Loader  
Overall Length 34.500ft  
Overall Width 8.000ft  
Overall Body Height 12.272ft  
Min Body Ground Clearance 0.961ft  
Track Width 8.000ft  
Lock-to-lock time 5.00s  
Curb to Curb Turning Radius 38.000ft

#### LEGEND FOR PROPOSED IMPROVEMENTS

- PROPOSED BUILDING
- PROPOSED CURB  
AND GUTTER
- PROPOSED GUIDERAIL
- PROPOSED CHAINLINK FENCE
- PAINTED TRAFFIC DIRECTION ARROW
- PROPOSED PARKING SPACES
- PROPOSED SIDEWALK
- STANDARD DUTY  
ASPHALTIC PAVEMENT
- HEAVY DUTY  
ASPHALTIC PAVEMENT
- HEAVY DUTY  
CONCRETE PAVEMENT
- ARCHITECTURAL CONCRETE  
REFER TO ARCH PLANS FOR  
LIMITS AND DETAILS.

SCALE IN FEET  
20' 10' 0 20' 40' 60'

NOT FOR CONSTRUCTION

NO.	REVISION	DATE

CONSULTANT:  
**BDG**  
Buckel Design Group, LLC.  
3471 DONAVILLE ST  
DULUTH, GA 30096  
PHONE: 404-567-5703  
FAX: 404-567-5703  
WWW.BDGE.COM



DEVELOPER:  
DISCOUNT TIRE COMPANY  
20225 N. SCOTTSDALE RD.  
SCOTTSDALE, AZ 85255  
PH: 480-606-6000



DISCLAIMER:  
THIS DRAWING IS AN  
INSTRUMENT OF SERVICE AND  
THE PROPERTY OF DISCOUNT  
TIRE COMPANY AND SHALL  
REMAIN THEIR PROPERTY.  
THE USE OF THIS DRAWING  
SHALL BE RESTRICTED TO  
THE ORIGINAL SITE FOR  
WHICH IT WAS PREPARED.  
PUBLICATION THEREOF IS  
EXPRESSLY LIMITED TO SUCH.

DISCOUNT TIRE STORE  
NORRIS FREEWAY  
KNOXVILLE, TN 37928  
PARCEL ID: 038CG005

STORE NUMBER:  
TNK 12166  
BDG # 20-110  
PROJECT MANAGER:  
HOLLY KEILMAN  
PROJECT CIVIL ENGINEER:  
KELLY WAGONER  
PH: (404) 567-5701  
Ext 103  
DRAWN BY:  
GDL

SHEET TITLE:  
USE ON REVIEW  
SITE PLAN  
DATE: MARCH 18, 2020  
ISSUED FOR: CONCEPTUAL REVIEW

SHEET NUMBER:  
**P-2**