

2005 KGIS POLICY BOARD

Bill Haslam
Mayor
City of Knoxville



Mike Ragsdale
Mayor
Knox County



Mintha Roach
President & CEO
KUB



KGIS "CHAMPION" DWIGHT KESSEL



KGIS's current Policy Board members (Mayor Bill Haslam, Mayor Mike Ragsdale and KUB President Mintha Roach) wish to recognize (at the 11:45 ceremony) a special "**KGIS Champion**": Mr. Dwight Kessel, the former Knox County Executive and KGIS Policy Board member, who was particularly instrumental in gaining approval for KGIS's initial creation from the County

Commission and from such key County departments as the Property Assessor – upon whose support KGIS continues to be absolutely dependant.

Dwight Kessel, a native of West Virginia, graduated from UT in 1950 with a degree in industrial engineering. Mr. Kessel was a member of Knoxville City Council from 1963 until 1966, Knox County Clerk from 1966 to 1980, and elected the first Knox County Executive in 1980, a position he held 14 years.

Mr. Kessel served on the KGIS Policy Board for nine years, acting as its first chairperson. During his tenure, Mr. Kessel and the Policy Board helped to guide KGIS through its initial County-wide aerial photography and digital map conversion project. Now, 20 years later, the KGIS database is comprised of more than 100 distinct categories of information, encompassing more than a terabyte of storage capacity, and being utilized by more than 1000 employees of the City, County and KUB.

DIRECTIONS TO KGIS DAY 2005

From west Knoxville / Airport: Traveling East on I-40 (North I-75) or from the Airport taking 129 North (Alcoa Hwy) to I-40 East; take I-40 east to downtown; take exit 388 and stay to the left on exit ramp; pass through the connector tunnel to Henley Street; go south to the third traffic light and turn left onto Main Street; go two blocks and the City/County Building is located on the right side at 400 Main Street.

From east Knoxville: Traveling West on Interstate 40: exit left at 388A on to James White Parkway; take first exit to stop sign and turn right onto Summit Hill; go to the fourth traffic light turn left onto Locust Street. Go to the 2nd traffic light, corner of Main and Locust. Turn left and go two blocks and the City/County Building is located on the right side at 400 Main Street.

From north Knoxville - I-75 / I-275: Traveling South on I-75: take I-275 South; follow signs to US 441 South/Henley St; pass through the connector tunnel to Henley Street; go south to the third traffic light and turn left onto Main Street; go two blocks and the City/County building is located on the right side at 400 Main Street.



400 Main Street Small Assembly Room City/County Building

Special Thanks for Donations:

Regal Cinemas	Pet Supplies Plus
Fun Vendors of Maryville	Simply Unique
Clarence Brown Theatre	Oodles
The Rush Fitness Complex	Tennessee Theatre
Knoxville Ice Bears	Hibachi Factory
Parkside Tavern	Riverside Tavern
Bullfish Grill	Comcast Cable
Ruby Tuesday	Volunteer Auto Wash

For more information visit KGIS's website www.kgis.org

Phone (865) 215-3906

WELCOME TO KGIS DAY 2005

**SMALL ASSEMBLY ROOM NOV 22ND , 11 am - 3 pm
CITY / COUNTY BUILDING
400 MAIN STREET**

The Knoxville, Knox County, Knoxville Utilities Board Geographic Information System (KGIS) is celebrating its 20th anniversary! And this is a perfect opportunity to extend a sincere "**Thank You**" to the many individuals who have contributed to the success of this organization. Good leadership, employees and friends like you have all provided support to this partnership throughout the years. So please come celebrate with us!

Keith Stump
KGIS Director



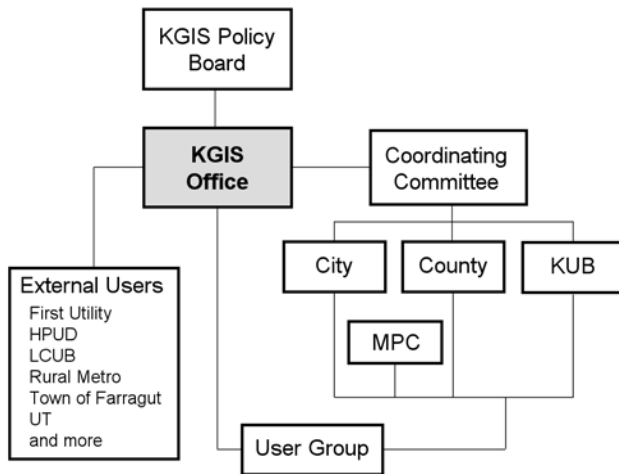
KGIS MISSION STATEMENT

KGIS will support the full mapping and geographic information needs of the City of Knoxville, Knox County, and the Knoxville Utilities Board, and will encourage the effective use and integration of geographic information for all organizations and individuals in Knox County.

ABOUT KGIS

KGIS is a Geographic Information System organized of people and departments within the local government of the City of Knoxville, Knox County, and Knoxville Utilities Board.

The KGIS office itself is responsible for updating the common set of computer-based maps which are accessed by all users and are the basis of the system, including planimetric maps, topographic maps, digital terrain models, and digital orthophotography. The data represented by these base maps encompass the entire area within the limits of Knox County, Tennessee.



Many additional sets of data are maintained within the KGIS system by the various departments, such as the following key users: the Knox County Property Assessor (property lines, plat review, and ownership), Metropolitan Planning Commission (addressing, subdivisions, zoning), City of Knoxville Engineering Department (ward maps, city limits, stormwater management, and traffic engineering), and the Knoxville Utilities Board (electrical transmission lines, water and gas mains/ services, waste water facilities).

KGIS also manages the www.kgis.org and www.kgis.net series of websites.



AGENDA

****Food will be served from 11 -1 ****

11:00 - 11:45 MEET AND GREET

**11:45 - 12:00 KGIS "CHAMPION"
AWARD PRESENTATION TO
DWIGHT KESSEL**

**12:00 - 12:15 POSTER/MAP/EXHIBIT
AWARD PRESENTATION**

12:15 - 2:30 MEET AND GREET

2:30 - 3:00 DOOR PRIZE DRAWINGS



POSTER /MAP/EXHIBIT CONTEST

KGIS Day Theme:

"How GIS Contributes to Public Policy Decisions"

- 1) Best Cartography (2 winners 1st and 2nd Place Only)
- 2) Most Educational (2 winners 1st and 2nd Place Only)
- 3) Best Exhibit (1 Winner only judged the day of the event)
- 4) Best Analysis (2 winners 1st and 2nd Place Only)
- 5) Best of Show (1 winner only judged the day of the event)

Where In The KNOXnet Where Are You?

An aerial photography game to determine who knows the most about Knox County. KGIS selected 9 different locations through-out Knox County and printed each location. You are to identify each location and submit your answers to KGIS. KGIS will determine who has all 9 correct and will draw 10 names from those that guessed correctly. The answers must be turned in the day of the event and the prizes will be distributed accordingly.

DOOR PRIZES

Please make sure you enter the drawing for the door prizes. Put your Name, Organization, Department, and Phone Number on the drawing ticket. You do not have to be present to win. Drawing takes place at 2:30 pm.

KGIS DAY PARTICIPANTS

CITY OF KNOXVILLE	DONNA SEIGMUND
ENGINEERING	DAVID HAGERMAN
ENGINEERING - STORMWATER	STEPHEN SHERROD
FIRE DEPT.	JERRY RANDELS
INFORMATION SERVICES / 311	DONNA YOUNG
PARKS	TRACY ISENBERG
POLICE DEPT.	
KNOX COUNTY	TODD NAPIER
DEVELOPMENT CORPORATION	MARTY PLEASANT
ENGINEERING / PUBLIC WORKS	MATT DONOVAN
ENGINEERING - AIR QUALITY	ROY ARTHUR
ENGINEERING - WATERSHED	RYAN WHITE
INFORMATION TECHNOLOGY	SALLY LODICO
LIBRARY	KAREN NOLT
PARKS	TODD COOK
PROBATION OFFICE	DAVID DALTON
PROPERTY ASSESSOR	RICK GRUBB
SCHOOLS	
KNOXVILLE UTILITIES BOARD	RYAN JUSTICE
ENGINEERING DEPT.	CLYDE MOORE
ENGINEERING DEPT.	KIM EVANS
ENGINEERING DEPT.	LARRY BOGGS
SYSTEM OPERATIONS	TIM KUHN
METROPOLITAN PLANNING COMM.	ALEX ZENDEL
METROPOLITAN PLANNING COMM.	AMY MYERS
EMERGENCY 911	STEFANIE FARRELL
HALLSDALE POWELL UTILITY DIST.	DAVID COOK
KCDC	SHARI COX
TOWN OF FARRAGUT	JERRY HARNISH
RURAL METRO	

SMALL ASSEMBLY ROOM LAYOUT

